

IN STOCK — BENETEAU



Builder: BENETEAU

Year Built: 2023

Model: trawler

Price: PRICE ON APPLICATION

Location: United States

LOA: 41' (12.5mm)

Beam: 13.75

Min Draft: 3' 9" (1.14mm)

Max Draft: 3' 9" (1.14mm)

Our experienced yacht broker, Andrey Shestakov, will help you choose and buy a yacht that best suits your needs **IN STOCK — BENETEAU** from our catalogue. Presently, at Shestakov Yacht Sales Inc., we have a wide variety of yachts available on our sale's list. We also work in close contact with all the big yacht manufacturers from all over the world.

If you would like to buy a yacht **IN STOCK — BENETEAU** or would like help answering any questions concerning purchasing, selling or chartering a yacht, please call **+1(954)274-4435**

TABLE OF CONTENTS

TABLE OF CONTENTS	2
SPECIFICATIONS	3
Overview	3
Basic Information	3
Dimensions	3
Speed, Capacities and Weight	4
Accommodations	4
Hull and Deck Information	4
Engine Information	4
PHOTOS	5
29	9
CONTACTS	10
Contact details	10
Telephones	10
Office hours	10
Address	10

SPECIFICATIONS

Overview

****Arriving February 2023****

A generous passagemaker, the Swift Trawler 41 successfully renews the spirit and style of the trawler range. comfortable, practical, and boasting ample living space.

The galley has been wisely placed aft of the wheelhouse, connecting seamlessly with the cockpit and the swim platform. With the large sliding glass door open and the bar plancha in place, she offers a magnificent well ventilated flush interior and exterior space for entertaining. And to significantly increase the cockpit, the bench seat is sliding.

The driver's seat easily rotates, providing seating for up to 8 people in the lounge space. The clever layout of the convertible saloon includes a curtain that runs around the double berth, offering privacy for this comfortable sleeping space. At the bow, the wide sunbath is versatile to offer a bench seat with liftable backrest, in front of the sea.

The Swift Trawler 41 is ideal for a wide variety of programmes and comes in a Sedan version, preferred by boaters in rougher conditions, as well as for peaceful cruises on inland waterways. The large panoramic windshield offers an all-around view. The driving station has a large steering wheel, one of the Swift Trawler's hallmarks.

Basic Information

Category: trawler

Model Year: 2023

Year Built: 2023

Country: United States

Dimensions

LOA: 41' (12.5mm)

Beam: 13.75

Min Draft: 3' 9" (1.14mm)

Max Draft: 3' 9" (1.14mm)

Speed, Capacities and Weight

Water Capacity: 106 Gallons

Fuel Capacity: 309 Gal Gallons

Accommodations

Total Cabins: 3

Total Heads: 2

Hull and Deck Information

Hull Material: Fiberglass

Engine Information

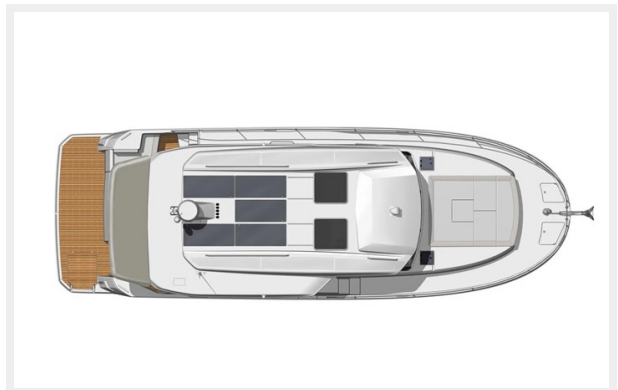
Engines: 2

Manufacturer: Yanmar

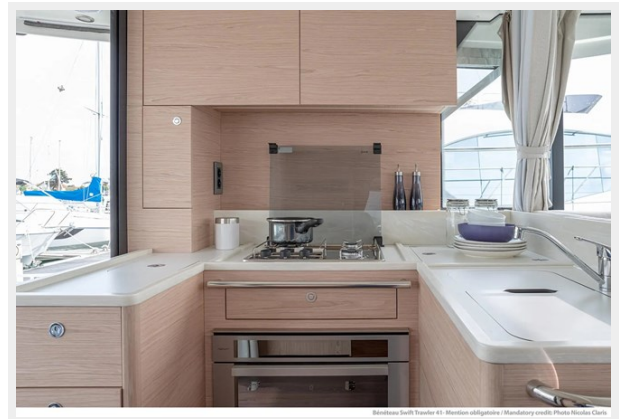
Engine Type: Inboard

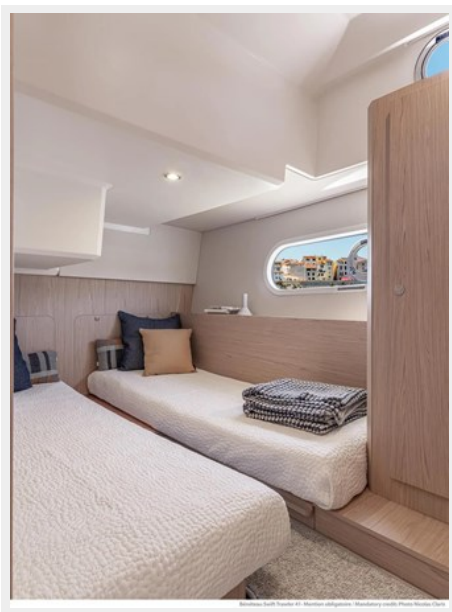
Fuel Type: Diesel

PHOTOS











29



CONTACTS

Andrey Shestakov, leading yacht broker of the sales department of Shestakov Yacht Sales Inc. Shestakov Yacht Sales Inc., the official representative of the Miami/Fort Lauderdale FL headquarters.

Contact details

Email: andrey@shestakovyachtsales.com

Web: shestakovyachtsales.com/en/

Telephones

USA: +1(954)274-4435

Office hours

Monday – Saturday: **9:00 - 21:00** EDT

Sunday: **closed**

Address



Harbour Towne Marina, 850 NE 3rd St,
STE 213, Dania, FL 33004