

## **BERMUDA HIGH — ISLAND PACKET YACHTS**



**Builder:** ISLAND PACKET YACHTS

**Year Built:** 1986

**Model:** Sloop

**Price:** PRICE ON APPLICATION

**Location:** United States

**LOA:** 31' (9.45mm)

**Beam:** 11.5

**Max Draft:** 4' (1.22mm)

Our experienced yacht broker, Andrey Shestakov, will help you choose and buy a yacht that best suits your needs **Bermuda High — ISLAND PACKET YACHTS** from our catalogue. Presently, at Shestakov Yacht Sales Inc., we have a wide variety of yachts available on our sale's list. We also work in close contact with all the big yacht manufacturers from all over the world.

If you would like to buy a yacht **Bermuda High — ISLAND PACKET YACHTS** or would like help answering any questions concerning purchasing, selling or chartering a yacht, please call **+1(954)274-4435**

---

# TABLE OF CONTENTS

---

|                              |   |
|------------------------------|---|
| TABLE OF CONTENTS            | 2 |
| SPECIFICATIONS               | 4 |
| Overview                     | 4 |
| Basic Information            | 4 |
| Dimensions                   | 4 |
| Speed, Capacities and Weight | 4 |
| Accommodations               | 4 |
| Hull and Deck Information    | 4 |
| Engine Information           | 5 |
| PHOTOS                       | 6 |
| 0_2797084_                   | 6 |
| 1_2797084_                   | 6 |
| 2_2797084_                   | 6 |
| 3_2797084_                   | 6 |
| 4_2797084_                   | 7 |
| 5_2797084_                   | 7 |
| 6_2797084_                   | 7 |
| 7_2797084_                   | 7 |
| 8_2797084_                   | 7 |
| 9_2797084_                   | 7 |
| 11_2797084_                  | 8 |
| 10_2797084_                  | 8 |
| 12_2797084_                  | 8 |
| 13_2797084_                  | 8 |
| 14_2797084_                  | 8 |
| 15_2797084_                  | 8 |
| 17_2797084_                  | 9 |
| 16_2797084_                  | 9 |

---

|                 |    |
|-----------------|----|
| 18_2797084_     | 9  |
| 19_2797084_     | 9  |
| 21_2797084_     | 10 |
| 20_2797084_     | 10 |
| 22_2797084_     | 10 |
| 23_2797084_     | 10 |
| 24_2797084_     | 10 |
| 25_2797084_     | 10 |
| 27_2797084_     | 11 |
| 26_2797084_     | 11 |
| 29_2797084_     | 11 |
| 28_2797084_     | 11 |
| CONTACTS        | 12 |
| Contact details | 12 |
| Telephones      | 12 |
| Office hours    | 12 |
| Address         | 12 |

---

---

# SPECIFICATIONS

---

## Overview

---

Bermuda High is a 1986 Island Packet noted for its quality and robust construction. AUTOPILOT equipped. Full keel with only a 4 ft. draft which makes it ideal for Florida and Bahama cruising. Mast has been replaced with virtually new, oversized standing and running rigging. The 6 upper/lower side chain plates have been replaced. Roller furl also has been replaced and upgraded to a larger model. Lots of value for the price!

## Basic Information

---

**Category:** Sloop

**Model Year:** 1986

**Year Built:** 1986

**Country:** United States

## Dimensions

---

**LOA:** 31' (9.45mm)

**Beam:** 11.5

**Max Draft:** 4' (1.22mm)

## Speed, Capacities and Weight

---

**Water Capacity:** 54 Gallons

**Holding Tank:** 15 Gal Gallons

**Fuel Capacity:** 25 Gal Gallons

## Accommodations

---

**Total Cabins:** 2

**Total Heads:** 1

## Hull and Deck Information

---

**Hull Material:** Fiberglass

---

## Engine Information

---

**Engines:** 1

**Manufacturer:** Yanmar

**Fuel Type:** Diesel

# PHOTOS

0\_2797084\_



1\_2797084\_



2\_2797084\_



3\_2797084\_



4\_2797084\_



5\_2797084\_



6\_2797084\_



7\_2797084\_



8\_2797084\_



9\_2797084\_



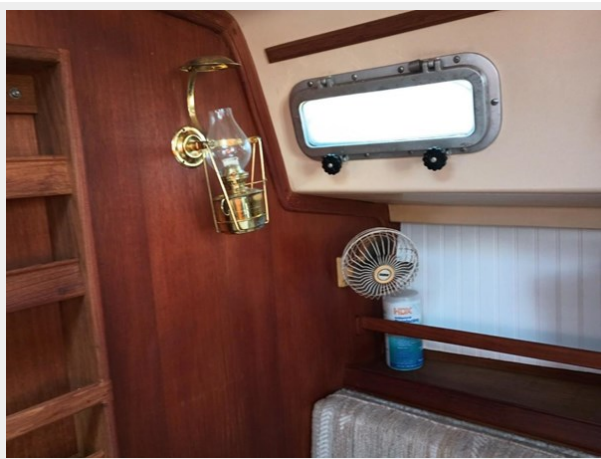
10\_2797084\_



11\_2797084\_



12\_2797084\_



13\_2797084\_



14\_2797084\_



15\_2797084\_





16\_2797084\_



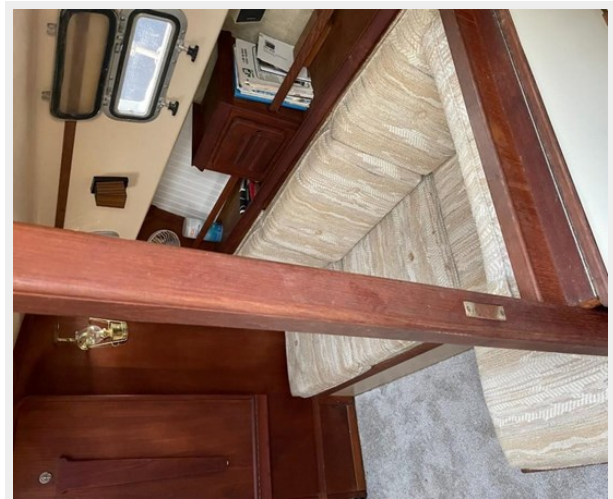
17\_2797084\_



18\_2797084\_



19\_2797084\_



20\_2797084\_



21\_2797084\_



22\_2797084\_



23\_2797084\_



24\_2797084\_



25\_2797084\_



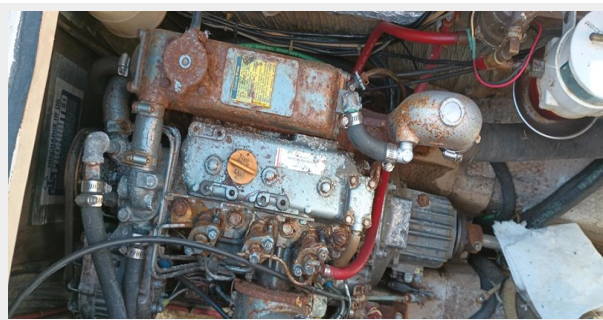
26\_2797084\_



27\_2797084\_



28\_2797084\_



29\_2797084\_



# CONTACTS

---

Andrey Shestakov, leading yacht broker of the sales department of Shestakov Yacht Sales Inc. Shestakov Yacht Sales Inc., the official representative of the Miami/Fort Lauderdale FL headquarters.

## Contact details

---

Email: [andrey@shestakovyachtsales.com](mailto:andrey@shestakovyachtsales.com)

Web: [shestakovyachtsales.com/en/](http://shestakovyachtsales.com/en/)

## Telephones

---

USA: +1(954)274-4435

## Office hours

---

Monday – Saturday: **9:00 - 21:00** EDT

Sunday: **closed**

## Address

---



Harbour Towne Marina, 850 NE 3rd St,  
STE 213, Dania, FL 33004