

## PHANTOM — HINCKLEY



**Builder:** HINCKLEY

**Year Built:** 1999

**Model:** Cruising Sailboat

**Price:** PRICE ON APPLICATION

**Location:** United States

**LOA:** 51' 6" (15.7mm)

**Beam:** 14

**Min Draft:** 5' 10" (1.78mm)

**Max Draft:** 11' 10" (3.61mm)

Our experienced yacht broker, Andrey Shestakov, will help you choose and buy a yacht that best suits your needs **PHANTOM — HINCKLEY** from our catalogue. Presently, at Shestakov Yacht Sales Inc., we have a wide variety of yachts available on our sale's list. We also work in close contact with all the big yacht manufacturers from all over the world.

If you would like to buy a yacht **PHANTOM — HINCKLEY** or would like help answering any questions concerning purchasing, selling or chartering a yacht, please call **+1(954)274-4435**

# TABLE OF CONTENTS

TABLE OF CONTENTS	2
SPECIFICATIONS	5
Overview	5
Basic Information	5
Dimensions	5
Speed, Capacities and Weight	5
Accommodations	5
Hull and Deck Information	6
Engine Information	6
PHOTOS	7
Looking Forward	7
Profile	7
Deck Detail	7
Deck Detail	7
Looking Aft, Midships	8
Cockpit Aft	8
Cockpit Looking Aft	8
Cockpit	8
Cockpit Detail	8
Aft Deck	8
Cockpit Enclosure	9
Solar Panels	9
Transom	9
Companionway	9
Main Salon	9
Main Salon Port	9
Dining Table	10
Table Inlay	10

Main Salon Starboard	10
Main Salon Looking Aft	10
Nav Station	10
Switch Panel	10
Aft Cabin	11
Aft Cabin Outboard	11
Aft Cabin Looking Forward	11
Aft Head	11
Aft Shower Stall	11
Galley	11
Galley Aft	12
Galley Forward	12
Looking Forward Below	12
Port Guest Cabin, Fwd.	12
Port Guest Cabin, Looking Forward	12
Forward Head	12
Stbd. Guest Cabin	13
Starboard Guest Cabin, Forward	13
Builder Plate	13
Under Sail	13
Under Sail	13
At Dock	13
Stern View	14
Sunset	14
Fresh Paint	14
Underbody	14
Engine	14
CONTACTS	15
Contact details	15

---

Telephones	15
Office hours	15
Address	15

---

# SPECIFICATIONS

---

## Overview

---

PHANTOM is an extremely well maintained, custom-built Hinckley SW-52 originally commissioned by a very experienced sailor and yachtsman who insisted on the finest throughout the vessel. Many recent upgrades include new sails, electronics, brand new hull paint and much more as noted herein.

## Basic Information

---

**Category:** Cruising Sailboat

**Model Year:** 1999

**Year Built:** 1999

**Country:** United States

## Dimensions

---

**LOA:** 51' 6" (15.7mm)

**LWL:** 37' 6" (11.43mm)

**Beam:** 14

**Min Draft:** 5' 10" (1.78mm)

**Max Draft:** 11' 10" (3.61mm)

## Speed, Capacities and Weight

---

**Gross Tonnage:** 19.5 Pounds

**Water Capacity:** 200 Gallons

**Fuel Capacity:** 120 Gal Gallons

## Accommodations

---

**Total Cabins:** 3

**Total Berths:** 6

**Sleeps:** 8

**Total Heads:** 2

---

## Hull and Deck Information

---

**Hull Material:** Fiberglass

**Deck Material:** Teak

**Hull Configuration:** Centerboard

**Hull Color:** Flag Blue

**Hull Designer:** McCurdy & Rhodes

---

## Engine Information

---

**Engines:** 1

**Manufacturer:** Yanmar

**Engine Type:** Inboard

**Fuel Type:** Diesel

# PHOTOS

**Profile**



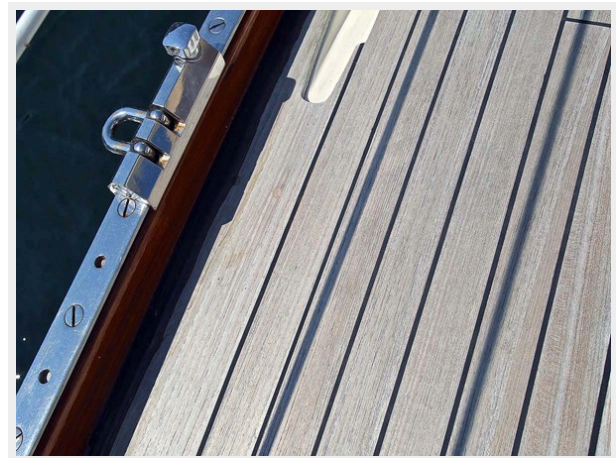
**Looking Forward**



**Deck Detail**



**Deck Detail**



**Looking Aft, Midships**



**Cockpit Aft**



**Cockpit Looking Aft**



**Cockpit**



**Cockpit Detail**



**Aft Deck**





**Cockpit Enclosure**



**Solar Panels**



**Transom**



**Companionway**



**Main Salon**



**Main Salon Port**



**Dining Table**



**Table Inlay**



**Main Salon Starboard**



**Main Salon Looking Aft**



**Nav Station**



**Switch Panel**



**Aft Cabin**



**Aft Cabin Outboard**



**Aft Cabin Looking Forward**



**Aft Head**



**Aft Shower Stall**



**Galley**



**Galley Aft**



**Galley Forward**



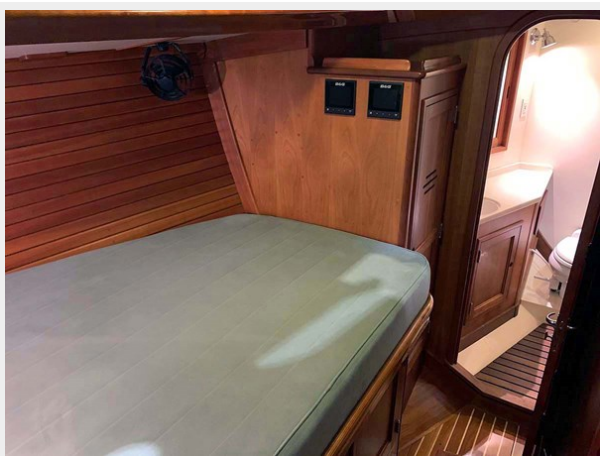
**Looking Forward Below**



**Port Guest Cabin, Fwd.**



**Port Guest Cabin, Looking Forward**



**Forward Head**



**Stbd. Guest Cabin**



**Starboard Guest Cabin, Forward**



**Builder Plate**



**Under Sail**



**Under Sail**



**At Dock**



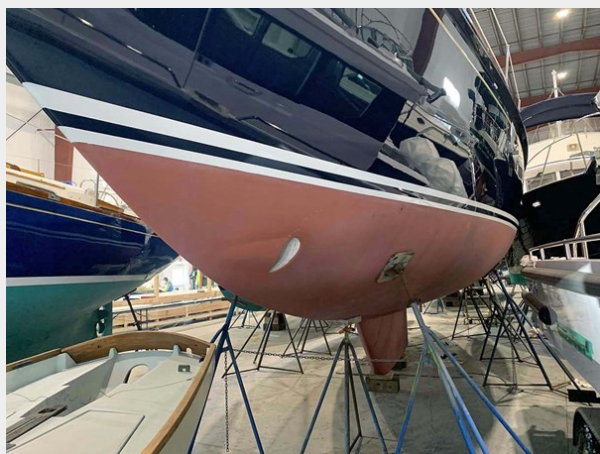
**Stern View**



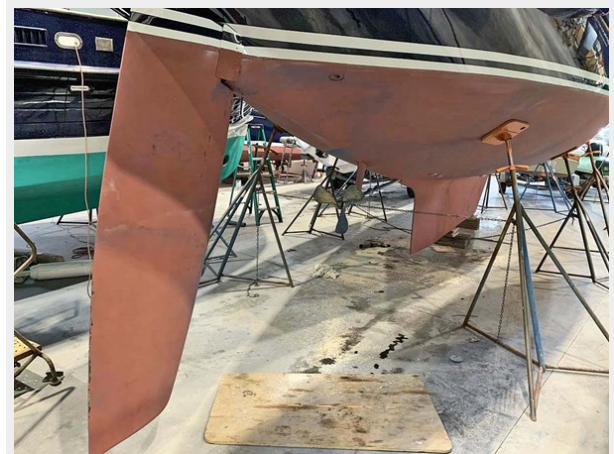
**Sunset**



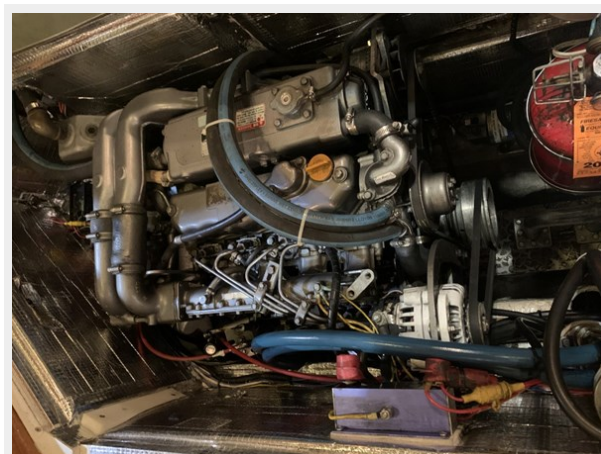
**Fresh Paint**



**Underbody**



**Engine**



# CONTACTS

---

Andrey Shestakov, leading yacht broker of the sales department of Shestakov Yacht Sales Inc. Shestakov Yacht Sales Inc., the official representative of the Miami/Fort Lauderdale FL headquarters.

## Contact details

---

Email: [andrey@shestakovyachtsales.com](mailto:andrey@shestakovyachtsales.com)

Web: [shestakovyachtsales.com/en/](http://shestakovyachtsales.com/en/)

## Telephones

---

USA: +1(954)274-4435

## Office hours

---

Monday – Saturday: **9:00 - 21:00** EDT

Sunday: **closed**

## Address

---



Harbour Towne Marina, 850 NE 3rd St,  
STE 213, Dania, FL 33004