

ZOUT — MAIORA



Builder: MAIORA

Year Built: 2022

Model: mega yacht

Price: PRICE ON APPLICATION

Location: Italy

LOA: 100' 5" (30.61mm)

Beam: 24.58

Min Draft: 6' 11" (2.11mm)

Cruise Speed: 23 Knots Kts. (26 MPH)

Max Speed: 26 Knots Kts. (30 MPH)

Our experienced yacht broker, Andrey Shestakov, will help you choose and buy a yacht that best suits your needs **ZOUT — MAIORA** from our catalogue. Presently, at Shestakov Yacht Sales Inc., we have a wide variety of yachts available on our sale's list. We also work in close contact with all the big yacht manufacturers from all over the world.

If you would like to buy a yacht **ZOUT — MAIORA** or would like help answering any questions concerning purchasing, selling or chartering a yacht, please call **+1(954)274-4435**

TABLE OF CONTENTS

TABLE OF CONTENTS	2
SPECIFICATIONS	3
Overview	3
Basic Information	4
Dimensions	4
Speed, Capacities and Weight	4
Accommodations	5
Hull and Deck Information	5
Engine Information	5
PHOTOS	6
CONTACTS	8
Contact details	8
Telephones	8
Office hours	8
Address	8

SPECIFICATIONS

Overview

The MAIORA 30 CONVERTIBLE is the latest new model presented by the prestigious Italian brand Maiora of the Gruppo FIPA shipbuilder and represents the perfect sum-up of features typical of larger vessels (36-38m) in a 100-footer. This new model can be registered under 24 meters, whilst she has an overall beam of 7.50 meters, the largest of any vessel on the market in her category.

Crafted with the highest level of technical precision and attention to detail, the MAIORA 30 CONVERTIBLE boasts a spacious layout that provides impressive volumes for a yacht of its size. With a length of 100ft and a width of 24.7ft, this yacht offers ample space for the owner and all guests and takes comfort and wellbeing to a whole new level.

This superyacht is called “convertible” because of the particular shape of the upper deck, which is divided into two areas: a closed and fully air-conditioned area, the sky lounge, and an “en-plein air” area, which can be used in different ways according to the Owner’s needs.

The sky lounge is featured by lateral openable windows and a stern door, which turn a closed and private space in an open and breezy area with a direct connection with the external spaces.

The saloon of the sky lounge is a versatile area of about 50m², enriched by elegant furnishings from the most prestigious Italian furniture brands and completed by valuable artworks.

On the aft area of the upper deck, guests will find spacious and comfortable lounge chairs, sunbeds, and other furniture, perfect for soaking up the sun and taking in the stunning views. And for those seeking a more active experience, the MAIORA 30 CONVERTIBLE also features a sauna, workout area, and direct access to the sea.

Located on the main deck forward, the master stateroom is very elegant, luminous and well designed. The shower in the master’s head, enriched by precious marbles, can be used also as a Hammam, to enhance the wellbeing on board.

The lower deck of the yacht offers comfortable and private accommodations for up to 10 guests, with two VIP cabins, two twin guest cabins, and four en-suite bathrooms. And for the crew, there are three cabins, two bathrooms, a comfortable dinette, and a laundry area.

Equipped with the latest technology, the helm station includes five big 24" screens and navigation equipment by FURUNO, ensuring a safe and smooth journey for all onboard. The MAIORA 30 CONVERTIBLE is powered by twin 2600 Hp MTU 16V 2000 M96L Diesel engines, providing a maximum speed of 27 knots. The tender garage accommodates a 20-ft tender, making this yacht truly unique on the market.

This brand new MAIORA 30 CONVERTIBLE is a truly exceptional yacht, offering impressive volumes, privacy areas, and special features. She is the perfect choice for those who love to sail for long trips and want to enjoy the liveability on board.

Basic Information

Category: mega yacht

Sub Category: Superyacht

Model Year: 2022

Year Built: 2022

Country: Italy

Dimensions

LOA: 100' 5" (30.61mm)

Beam: 24.58

Min Draft: 6' 11" (2.11mm)

Speed, Capacities and Weight

Cruise Speed: 23 Knots Kts. (26 MPH)

Cruise Speed Range: 800

Max Speed: 26 Knots Kts. (30 MPH)

Gross Tonnage: 205 Pounds

Water Capacity: 2800 Gallons

Fuel Capacity: 3473.86 Gal Gallons

Accommodations

Total Cabins: 5

Sleeps: 10

Crew Cabin: 5

Crew Berths: 5

Hull and Deck Information

Hull Material: GRP

Deck Material: Composite

Hull Designer: Maiora . Fossati Design

Exterior Designer: Studio Quartostile Italian Design

Interior Designer: Fossati Design Bureau
Italin

Engine Information

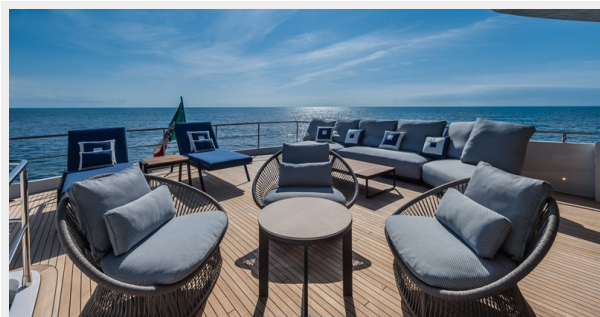
Engines: 2

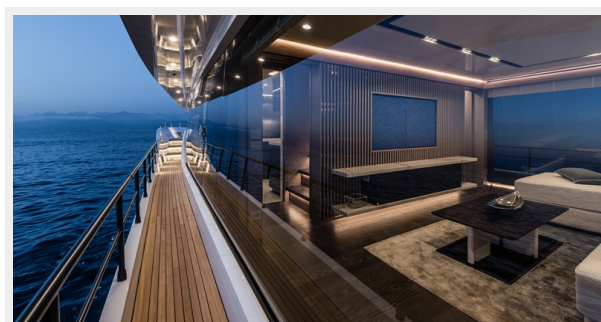
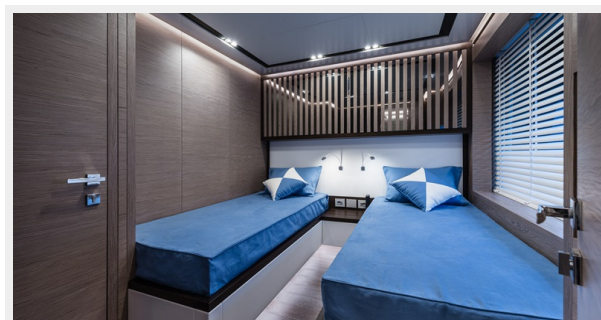
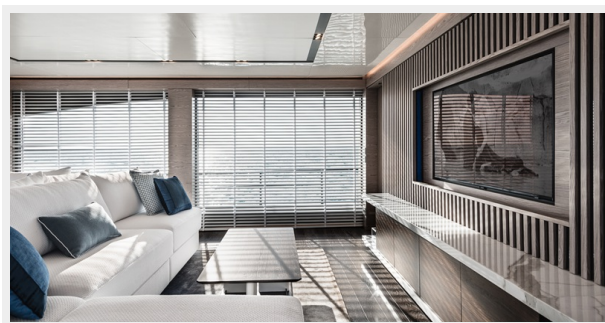
Manufacturer: MTU

Engine Type: Inboard

Fuel Type: Diesel

PHOTOS





CONTACTS

Andrey Shestakov, leading yacht broker of the sales department of Shestakov Yacht Sales Inc. Shestakov Yacht Sales Inc., the official representative of the Miami/Fort Lauderdale FL headquarters.

Contact details

Email: **andrey@shestakovyachtsales.com**

Web: shestakovyachtsales.com/en/

Telephones

USA: **+1(954)274-4435**

Office hours

Monday – Saturday: **9:00 - 21:00 EDT**

Sunday: **closed**

Address



Harbour Towne Marina, 850 NE 3rd St,
STE 213, Dania, FL 33004