

SERENDIPITY — SHANNON



Builder: SHANNON

LOA: 38' 3" (11.66mm)

Year Built: 1991

Beam: 13.25

Model: trawler

Min Draft: 3' (0.91mm)

Price: PRICE ON APPLICATION

Location: United States

Our experienced yacht broker, Andrey Shestakov, will help you choose and buy a yacht that best suits your needs **Serendipity — SHANNON** from our catalogue. Presently, at Shestakov Yacht Sales Inc., we have a wide variety of yachts available on our sale's list. We also work in close contact with all the big yacht manufacturers from all over the world.

If you would like to buy a yacht **Serendipity — SHANNON** or would like help answering any questions concerning purchasing, selling or chartering a yacht, please call **+1(954)274-4435**

TABLE OF CONTENTS

TABLE OF CONTENTS	2
SPECIFICATIONS	5
Overview	5
Basic Information	5
Dimensions	5
Speed, Capacities and Weight	5
Accommodations	6
Hull and Deck Information	6
Engine Information	6
PHOTOS	7
2	7
3	7
4	7
5	7
6	7
7	7
8	8
9	8
10	8
11	8
12	8
13	8
14	9
15	9
16	9
17	9
18	9
19	9

20	10
21	10
22	10
23	10
24	10
25	10
26	11
27	11
28	11
29	11
30	11
31	11
32	12
33	12
34	12
35	12
36	12
37	12
38	13
39	13
40	13
41	13
42	13
43	13
44	14
45	14
46	14
47	14
48	14

49	14
50	15
51	15
52	15
53	15
54	15
55	15
56	16
57	16
58	16
59	16
60	16
61	16
62	17
63	17
CONTACTS	18
Contact details	18
Telephones	18
Office hours	18
Address	18

SPECIFICATIONS

Overview

This Shannon 36 Voyager in very good condition. The Teak wood work on the interior is beautiful, and shows the pride of Worksmanship that was taken when she was built.

She offers 2 state rooms, a flybridge, a spacious salon, a lower helm with full controls and gauges, and a galley Up. She has wide side decks, and a Pilot House Sliding door.

Serendipity is powered by reliable Peninsular GM 310 HP Diesel Engines, and a Westerbeke 6KW generator

She will make a great cruiser, live aboard, or great loop boat!

The aft enclosed cockpit with custom hard top makes for a spacious room, and the flybridge has additional seating for 6, and a large aft bridge deck.

Check out the FULL SPECS for more details and give us a call today to set up a time to come see her!

Basic Information

Category: trawler

Model Year: 1991

Year Built: 1991

Country: United States

Dimensions

LOA: 38' 3" (11.66mm)

Beam: 13.25

Min Draft: 3' (0.91mm)

Speed, Capacities and Weight

Water Capacity: 150 Gallons

Holding Tank: 35 Gal Gallons

Fuel Capacity: 300 Gal Gallons

Accommodations

Total Cabins: 3

Total Heads: 1

Hull and Deck Information

Hull Material: Fiberglass

Engine Information

Engines: 2

Manufacturer: Peninsular Diesel

Engine Type: Inboard

Fuel Type: Diesel

PHOTOS

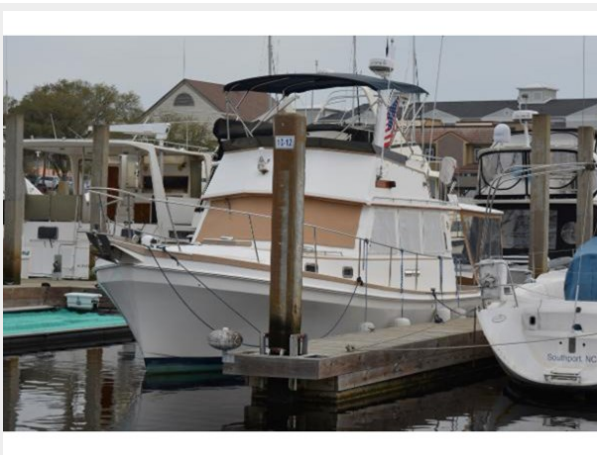
2



3



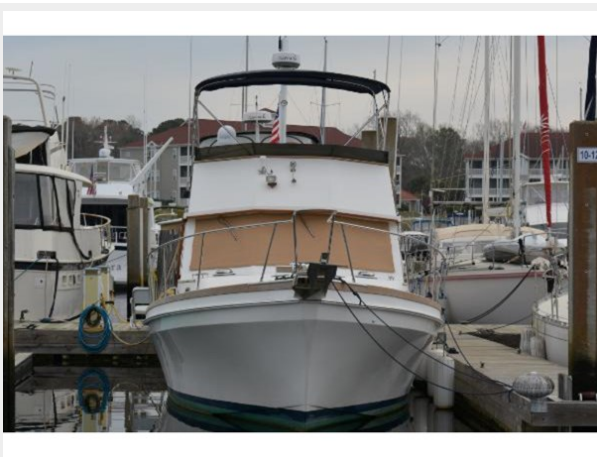
4



5



6



7



8



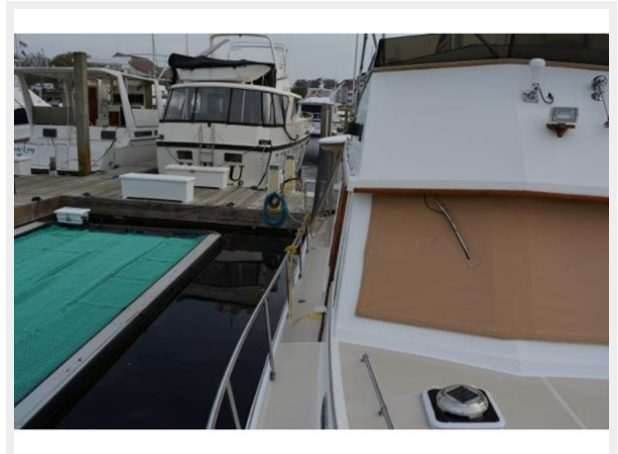
9



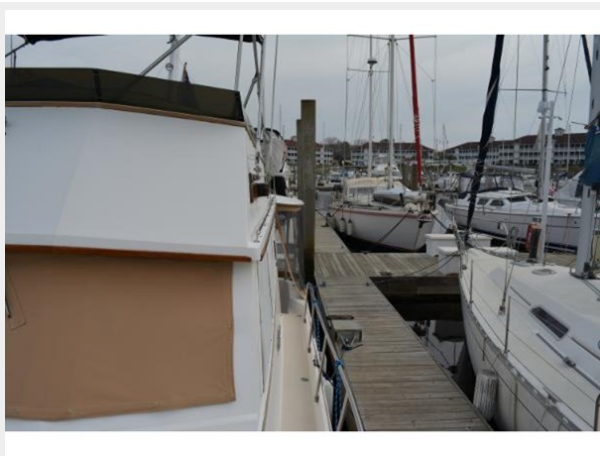
10



11



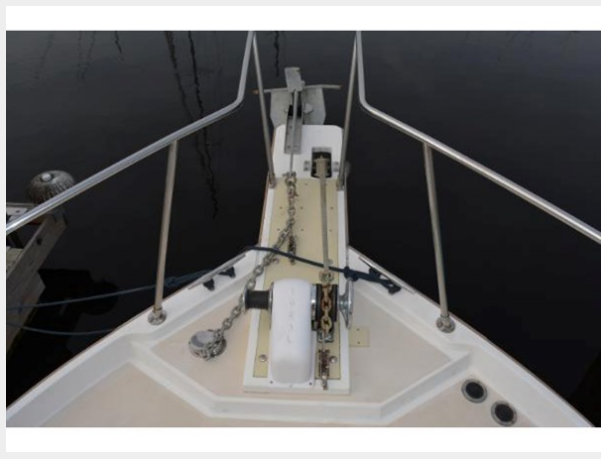
12



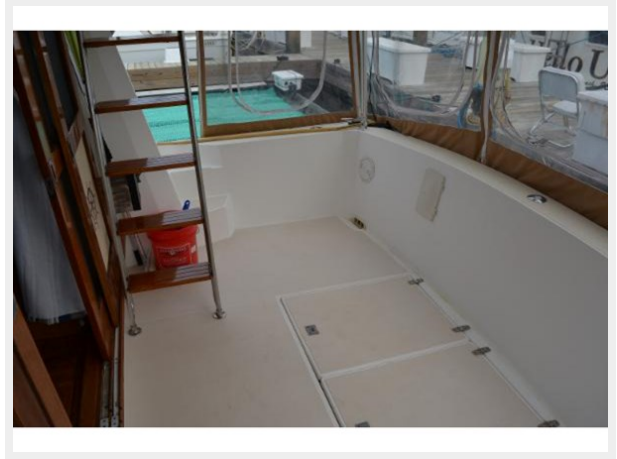
13



14



15



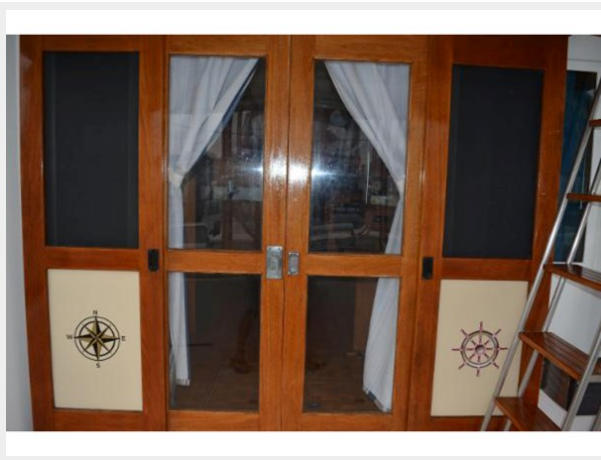
16



17



18



19



20



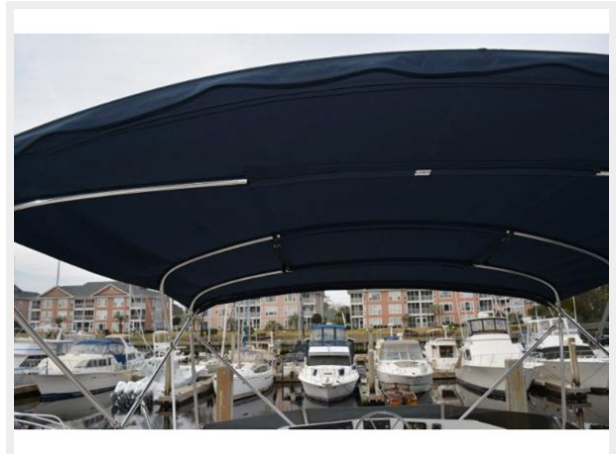
21



22



23



24



25



26



27



28



29



30



31



32



33



34



35



36



37



38



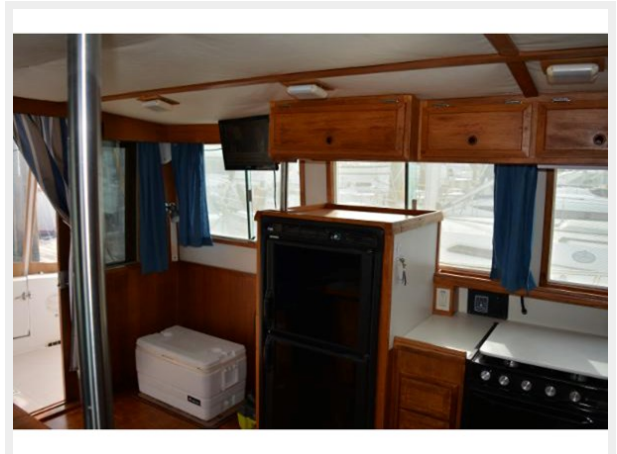
39



40



41



42



43



44



45



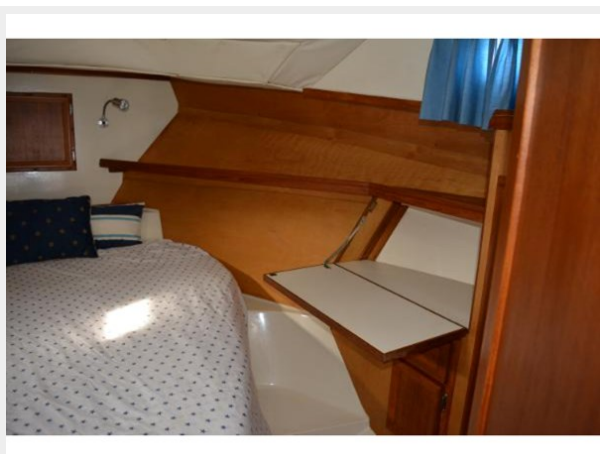
46



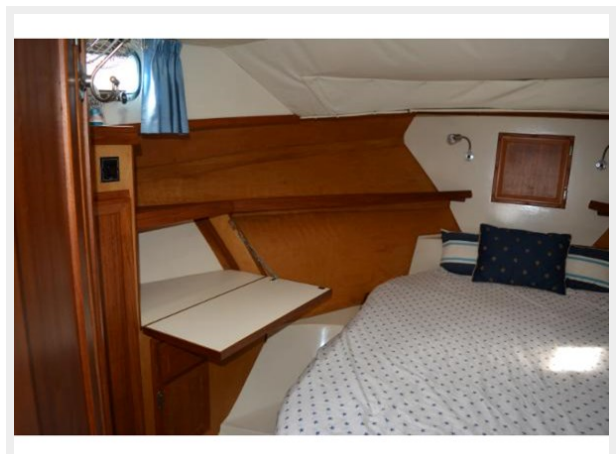
47



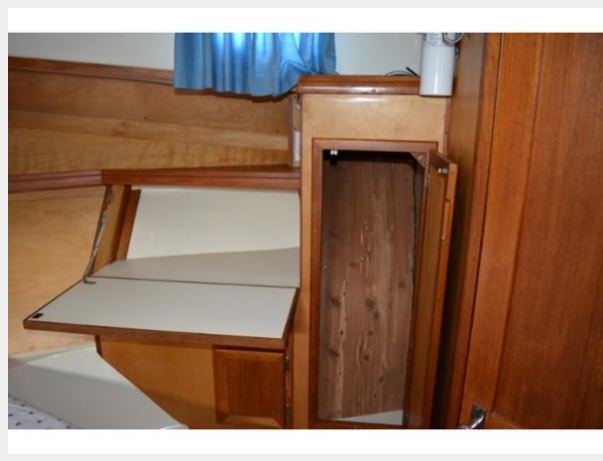
48



49



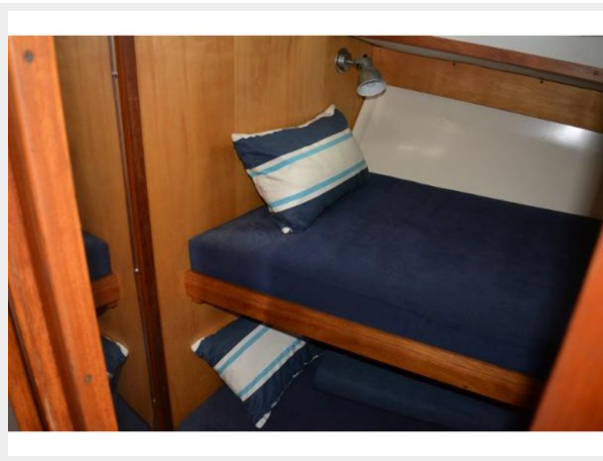
50



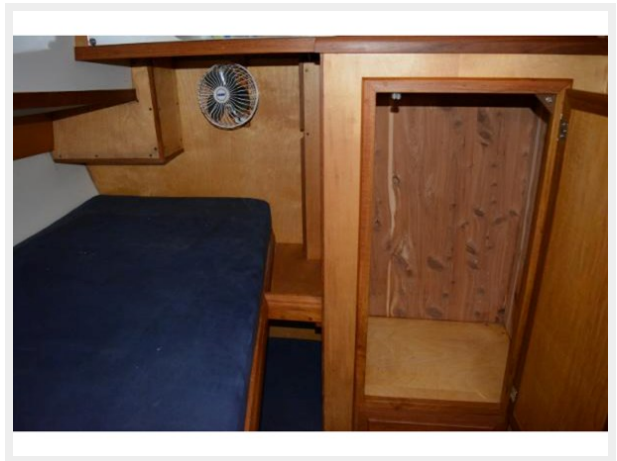
51



52



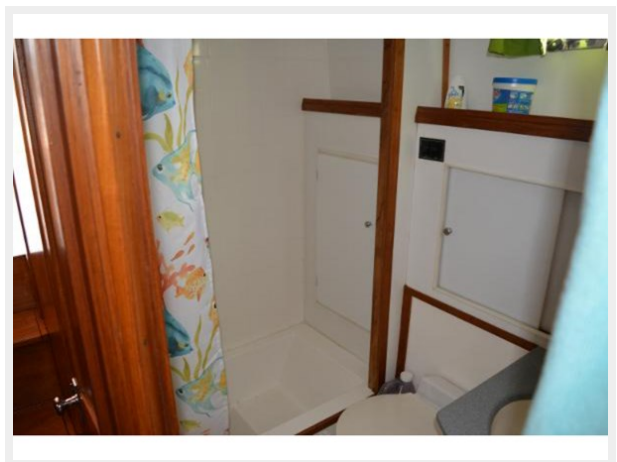
53



54



55



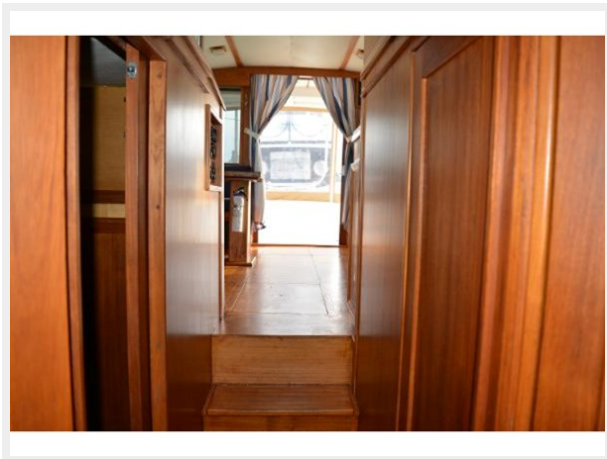
56



57



58



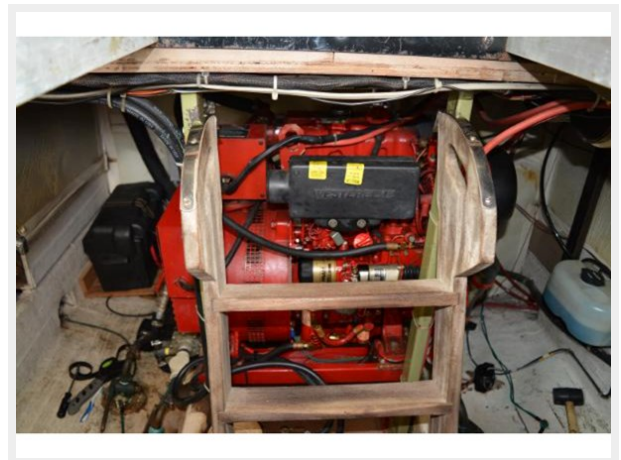
59



60



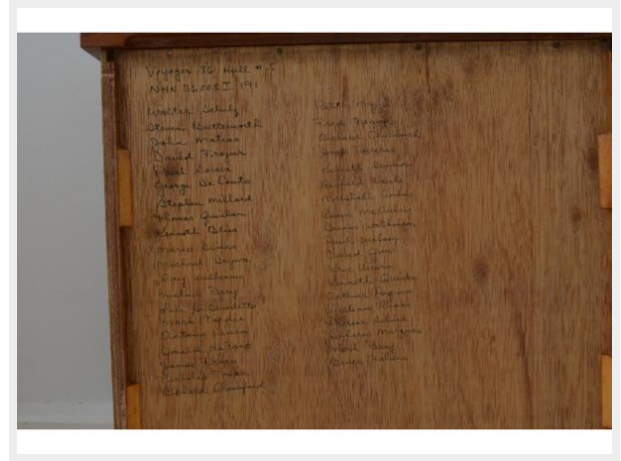
61



62



63



CONTACTS

Andrey Shestakov, leading yacht broker of the sales department of Shestakov Yacht Sales Inc. Shestakov Yacht Sales Inc., the official representative of the Miami/Fort Lauderdale FL headquarters.

Contact details

Email: andrey@shestakovyachtsales.com

Web: shestakovyachtsales.com/en/

Telephones

USA: +1(954)274-4435

Office hours

Monday – Saturday: **9:00 - 21:00** EDT

Sunday: **closed**

Address



Harbour Towne Marina, 850 NE 3rd St,
STE 213, Dania, FL 33004