

## FONTUS — RIVA



**Builder:** [RIVA](#)

**Year Built:** 2019

**Model:** cruiser

**Price:** \$749,000 USD

**Location:** United States

**LOA:** 38' (11.58mm)

**Beam:** 11.58

**Min Draft:** 3' 6" (1.07mm)

**Max Draft:** 3' 6" (1.07mm)

**Cruise Speed:** 24 Knots Kts. (28 MPH)

**Max Speed:** 31 Knots Kts. (36 MPH)

Our experienced yacht broker, Andrey Shestakov, will help you choose and buy a yacht that best suits your needs **Fontus — RIVA** from our catalogue. Presently, at Shestakov Yacht Sales Inc., we have a wide variety of yachts available on our sale's list. We also work in close contact with all the big yacht manufacturers from all over the world.

If you would like to buy a yacht **Fontus — RIVA** or would like help answering any questions concerning purchasing, selling or chartering a yacht, please call **+1(954)274-4435**

# TABLE OF CONTENTS

---

|                              |   |
|------------------------------|---|
| TABLE OF CONTENTS            | 2 |
| SPECIFICATIONS               | 4 |
| Overview                     | 4 |
| Basic Information            | 4 |
| Dimensions                   | 4 |
| Speed, Capacities and Weight | 5 |
| Accommodations               | 5 |
| Hull and Deck Information    | 5 |
| Engine Information           | 5 |
| PHOTOS                       | 6 |
| 2 Profile                    | 6 |
| 3 Profile                    | 6 |
| 5 Profile                    | 6 |
| 4 profile                    | 6 |
| 6 Aft Seating                | 6 |
| 7 Helm Seating               | 6 |
| 8 Heal Seating               | 7 |
| 9 Seating                    | 7 |
| 10 Dinette                   | 7 |
| 10 Helm                      | 7 |
| 11 Helm                      | 7 |
| 12 Dinette                   | 7 |
| 13 Dinette                   | 8 |
| 14 Dinette                   | 8 |
| 16 Dinette converted to bed  | 8 |
| 15 Dinette                   | 8 |
| 17 Dinette converted to bed  | 8 |
| 18 Dinette                   | 8 |

---

|                 |    |
|-----------------|----|
| 21 Galley       | 9  |
| 19 Helm         | 9  |
| 22 Galley       | 9  |
| 23 Galley       | 9  |
| 25 galley       | 9  |
| 26 Galley       | 9  |
| 28 Dinette      | 10 |
| 27 Head         | 10 |
| 28 Head         | 10 |
| DSC_5645        | 10 |
| DSC_5646        | 10 |
| DSC_5648        | 10 |
| IMG_0633        | 11 |
| IMG_0635        | 11 |
| CONTACTS        | 12 |
| Contact details | 12 |
| Telephones      | 12 |
| Office hours    | 12 |
| Address         | 12 |

---

# SPECIFICATIONS

---

## Overview

---

**2019 Riva Rivamare "FONTUS"**

**Sea Keeper, Garmin Electronics**

**EASY TO SEE IN FORT LAUDERDALE, FL**

The magnificent Rivamare rewrites the rulebook of timeless elegance. With a dedicated production line, the 40' speedboat combines the style and charm with the most cutting edge technologies, and offers the greatest care for every detail, together with a level of comfort and spaces never seen before in boats of this size. With its sinuous and sleek lines, the Rivamare looks seductive and sporty boasting a profile with a distinctive double-curved laminated crystal window at the level of the cabin. The most eye-catching feature on the deck is the windscreen, consisting of 5 double-curved laminated crystal glass sections set in a stainless steel frame, fitted with a rail for the cockpit cover.

## Basic Information

---

**Category:** cruiser

**Sub Category:** Express

**Model Year:** 2019

**Year Built:** 2019

**Country:** United States

## Dimensions

---

**LOA:** 38' (11.58mm)

**Beam:** 11.58

**Min Draft:** 3' 6" (1.07mm)

**Max Draft:** 3' 6" (1.07mm)

---

## Speed, Capacities and Weight

---

**Cruise Speed:** 24 Knots Kts. (28 MPH)

**Cruise Speed Range:** 260

**Max Speed:** 31 Knots Kts. (36 MPH)

**Max Speed Range:** 210 Kts.

**Gross Tonnage:** 11.3 Pounds

**Water Capacity:** 53 Gallons

**Holding Tank:** 21.1 Gal Gallons

**Fuel Capacity:** 211 Gal Gallons

---

## Accommodations

---

**Total Cabins:** 1

**Total Berths:** 2

**Sleeps:** 2

**Total Heads:** 1

---

## Hull and Deck Information

---

**Hull Material:** GRP

**Deck Material:** Teak

**Hull Configuration:** Deep Vee

**Hull Designer:** Officina Italiana Design

**Interior Designer:** Officina Italiana Design

---

## Engine Information

---

**Engines:** 2

**Manufacturer:** Volvo Penta

**Fuel Type:** Diesel

# PHOTOS

**2 Profile**



**3 Profile**



**4 profile**



**5 Profile**



**6 Aft Seating**



**7 Helm Seating**



**8 Heal Seating**



**9 Seating**



**10 Dinette**



**10 Helm**



**11 Helm**



**12 Dinette**



**13 Dinette**



**14 Dinette**



**15 Dinette**



**16 Dinette converted to bed**



**17 Dinette converted to bed**

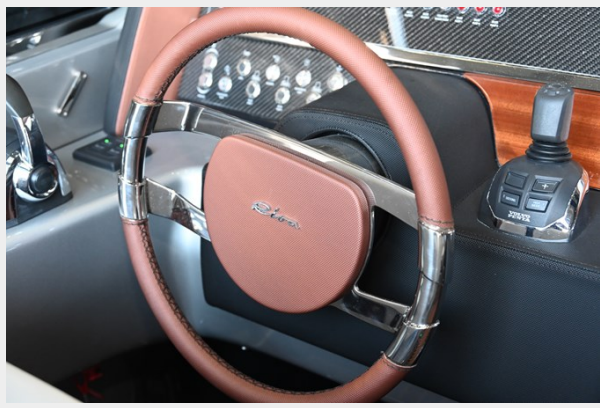


**18 Dinette**





19 Helm



21 Galley



22 Galley



23 Galley



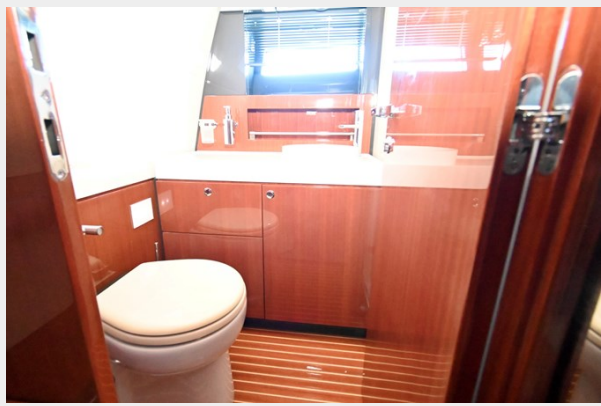
25 galley



26 Galley



27 Head



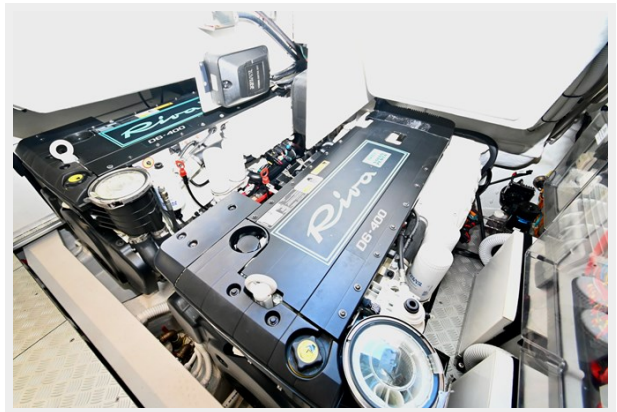
28 Dinette



28 Head



DSC\_5645



DSC\_5646



DSC\_5648



IMG\_0633



IMG\_0635



# CONTACTS

---

Andrey Shestakov, leading yacht broker of the sales department of Shestakov Yacht Sales Inc. Shestakov Yacht Sales Inc., the official representative of the Miami/Fort Lauderdale FL headquarters.

## Contact details

---

Email: [andrey@shestakovyachtsales.com](mailto:andrey@shestakovyachtsales.com)

Web: [shestakovyachtsales.com/en/](http://shestakovyachtsales.com/en/)

## Telephones

---

USA: +1(954)274-4435

## Office hours

---

Monday – Saturday: **9:00 - 21:00** EDT

Sunday: **closed**

## Address

---



Harbour Towne Marina, 850 NE 3rd St,  
STE 213, Dania, FL 33004