

IN STOCK — SOLACE BOATS



Builder: SOLACE BOATS

Year Built: 2023

Model: Sport Fisherman

Price: PRICE ON APPLICATION

Location: United States

LOA: 41' (12.5mm)

Beam: 12.25

Cruise Speed: 44 Knots Kts. (51 MPH)

Max Speed: 61 Knots Kts. (70 MPH)

Our experienced yacht broker, Andrey Shestakov, will help you choose and buy a yacht that best suits your needs **IN STOCK — SOLACE BOATS** from our catalogue. Presently, at Shestakov Yacht Sales Inc., we have a wide variety of yachts available on our sale's list. We also work in close contact with all the big yacht manufacturers from all over the world.

If you would like to buy a yacht **IN STOCK — SOLACE BOATS** or would like help answering any questions concerning purchasing, selling or chartering a yacht, please call **+1(954)274-4435**

TABLE OF CONTENTS

TABLE OF CONTENTS	2
SPECIFICATIONS	3
Overview	3
Basic Information	4
Dimensions	4
Speed, Capacities and Weight	5
Accommodations	5
Hull and Deck Information	5
Engine Information	5
PHOTOS	6
CONTACTS	8
Contact details	8
Telephones	8
Office hours	8
Address	8

SPECIFICATIONS

Overview

IN STOCK

2023 SOLACE 41CS

The 41CS incorporates more family and fishing features into one center console boat than the boating industry has ever seen. From the revolutionary one-piece dive door, the classic SÖLACE electric windshield, robust cockpit fighting chair/rocket launcher, our transformable bow seating area, cabin with enclosed shower and head, and brilliant cockpit for fishing or entertainment. A recreational fun fishing boat or a tournament fishing boat, either way, this boat will raise fish and can compete with the rest of the fishing fleet competition.

She comes powered with twin Mercury 600 Verados with joystick piloting, equipped with twin 8622 Garmin touchscreen MFDs with integrated digital switching and multiple zone controls. Her twin-step ventilated hull with tracking chine rails and carbon fiber infused hull makes this a dry and great riding boat when riding in calm and choppy seas with no problems.

The 2023 Solace 41CS is easy to see in Dania, FL.

Key Features:

- Vacuum-infused hull using carbon fiber and vinylester-epoxy hybrid laminate to ensure strength and great performance
- Twin-step ventilated hull with tracking chine rails
- Fjord White Gel Coat hull
- Kingston Gray Gel Coat underside of the hardtop **UPGRADE**
- Oyster/Winter Gray with Winter Gray Interior Upholstery
- Twin Garmin 8622 Touchscreen MFDs with digital switching and multiple zone controls
- Garmin 54" 6KW Open Array Radar **UPGRADE**
- Quick MC2 X10 Gyro Stabilizer
- Twin Mercury 600 Verados with joystick piloting **UPGRADE**
- 8.6kw MASE diesel generator with sound shield
- 3000-watt Inverter with 100-amp charging
- HD Marine AGM deep/dual cycle batteries
- Integrated hardtop with the electronically actuated, fully opening windshield with wiper and washer
- Cockpit-facing dual 21.5" monitors repeating LED displays
- Gemlux Deluxe HD SS Outriggers with 22' carbon fiber telescoping poles and rigging kit

- Two 30-amp electric reel outlets
- Dual 1000W Airmar CHIRP Transducers, (Low and High) **UPGRADE**
- SHOXS shock mitigation helm seats
- Magnetic locations throughout the vessel for cupholders and embedded areas in fiberglass
- 16,000 BTU A/C with reverse heat cycle
- Helm A/C
- 6 gallon Water Heater
- SOLACE Exclusive Power Tilt Cockpit Shade **UPGRADE**
- Forward Sunshade with Carbon Fiber poles, LED illuminated **UPGRADE**
- Electrically actuated helm riser (raises the deck 5") with shock mitigation and anti-fatigue pad
- Cockpit workstation including an electric grill and freshwater sink, and removable magnetic seating cushions
- 40-amp Battery Charger
- Additional Fuel (166 gallons) **UPGRADE**
- Fishbox Chiller (Transom above deck fish box) **UPGRADE**
- 8 Underwater LED Lights: 4 transom; 4 recessed in the hull steps
- Port side swing-in boarding and/or dive door with ladder deployed from the in-deck storage compartment
- Luxury wood interior cabinetry with solid surface countertop and designer fixtures
- Twin settee converting to a queen berth
- Refrigerator mounted in Prep Center, Stbd side **UPGRADE**
- Removable magnetic cushions

Basic Information

Category: Sport Fisherman

Model Year: 2023

Year Built: 2023

Country: United States

Dimensions

LOA: 41' (12.5mm)

Beam: 12.25

Speed, Capacities and Weight

Cruise Speed: 44 Knots Kts. (51 MPH)

Max Speed: 61 Knots Kts. (70 MPH)

Water Capacity: 60 Gallons

Holding Tank: 18 Gal Gallons

Fuel Capacity: 725 Gal Gallons

Accommodations

Total Heads: 1

Hull and Deck Information

Hull Material: Fiberglass

Engine Information

Engines: 2

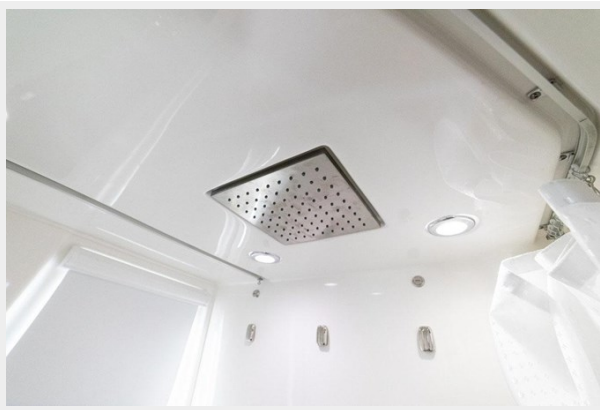
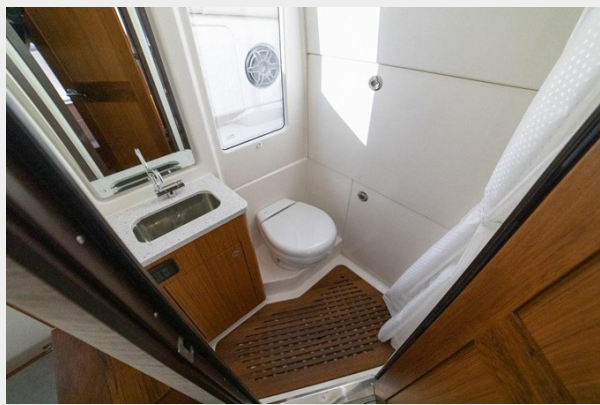
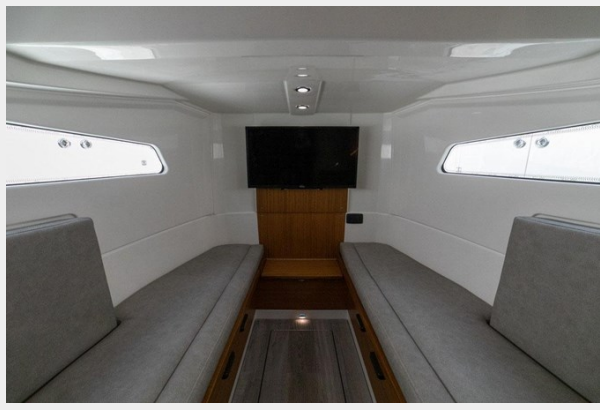
Manufacturer: Mercury

Engine Type: Outboard

Fuel Type: Gas/Petrol

PHOTOS





CONTACTS

Andrey Shestakov, leading yacht broker of the sales department of Shestakov Yacht Sales Inc. Shestakov Yacht Sales Inc., the official representative of the Miami/Fort Lauderdale FL headquarters.

Contact details

Email: andrey@shestakovyachtsales.com

Web: shestakovyachtsales.com/en/

Telephones

USA: +1(954)274-4435

Office hours

Monday – Saturday: **9:00 - 21:00** EDT

Sunday: **closed**

Address



Harbour Towne Marina, 850 NE 3rd St,
STE 213, Dania, FL 33004