

GRAND SLAM — PAUL MANN CUSTOM BOATS



Builder: PAUL MANN CUSTOM BOATS

Year Built: 2018

Model: Sport Fisherman

Price: PRICE ON APPLICATION

Location: Costa Rica

LOA: 61' (18.59mm)

Beam: 18

Max Draft: 5' 6" (1.68mm)

Cruise Speed: 38 Knots Kts. (44 MPH)

Max Speed: 45 Knots Kts. (52 MPH)

Our experienced yacht broker, Andrey Shestakov, will help you choose and buy a yacht that best suits your needs **Grand Slam — PAUL MANN CUSTOM BOATS** from our catalogue. Presently, at Shestakov Yacht Sales Inc., we have a wide variety of yachts available on our sale's list. We also work in close contact with all the big yacht manufacturers from all over the world.

If you would like to buy a yacht **Grand Slam — PAUL MANN CUSTOM BOATS** or would like help answering any questions concerning purchasing, selling or chartering a yacht, please call **+1(954)274-4435**

TABLE OF CONTENTS

TABLE OF CONTENTS	2
SPECIFICATIONS	5
Overview	5
Basic Information	5
Dimensions	5
Speed, Capacities and Weight	5
Accommodations	5
Hull and Deck Information	5
Engine Information	6
PHOTOS	7
3	7
2	7
4	7
5	7
6	7
7	7
8	8
9	8
10	8
11	8
12	8
13	8
14	9
15	9
16	9
17	9
21	9
18	9

22	10
23	10
24	10
25	10
26	10
27	10
29a	11
28	11
29b	11
30	11
31	11
32	11
33	12
34	12
35	12
36	12
37	12
38	12
39	13
40	13
41a	13
41b	13
42	13
43	13
44	14
45	14
46	14
47	14
48	14

49	14
50	15
51	15
52	15
53	15
54	15
55	15
56	16
57	16
58	16
59	16
70a	16
71	16
72	17
74	17
75	17
76	17
78	17
77	17
79	18
CONTACTS	19
Contact details	19
Telephones	19
Office hours	19
Address	19

SPECIFICATIONS

Overview

2018 Paul Mann 61' Custom Carolina Sportfisher

Basic Information

Category: Sport Fisherman

Model Year: 2018

Year Built: 2018

Country: Costa Rica

Dimensions

LOA: 61' (18.59mm)

Beam: 18

Max Draft: 5' 6" (1.68mm)

Speed, Capacities and Weight

Cruise Speed: 38 Knots Kts. (44 MPH)

Max Speed: 45 Knots Kts. (52 MPH)

Water Capacity: 275 Gallons

Holding Tank: 50 Gal Gallons

Fuel Capacity: 1631 Gal Gallons

Accommodations

Total Cabins: 3

Sleeps: 7

Total Heads: 3

Hull and Deck Information

Hull Material: Wood

Hull Configuration: Modified V-Hull

Engine Information

Engines: 2

Manufacturer: Caterpillar

Engine Type: Inboard

Fuel Type: Diesel

PHOTOS

2



3



4



5



6



7



8



9



10



11



12



13



14



15



16



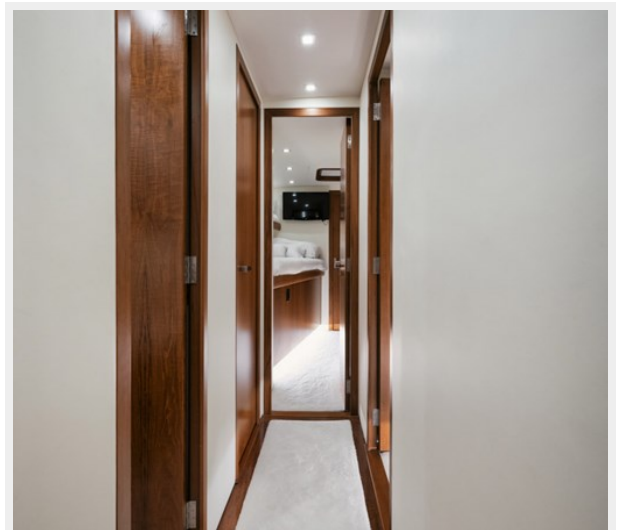
17



18



21



22



23



24



25



26



27



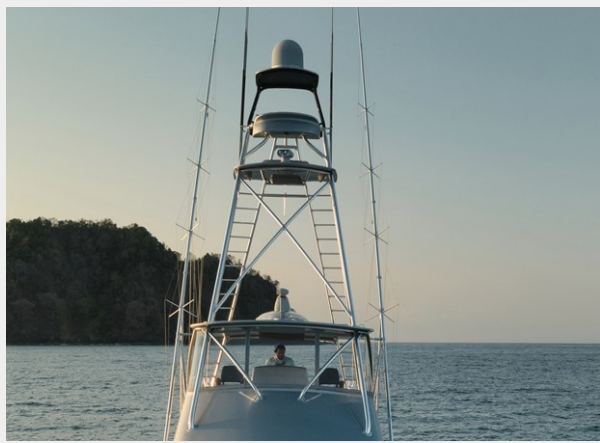
28



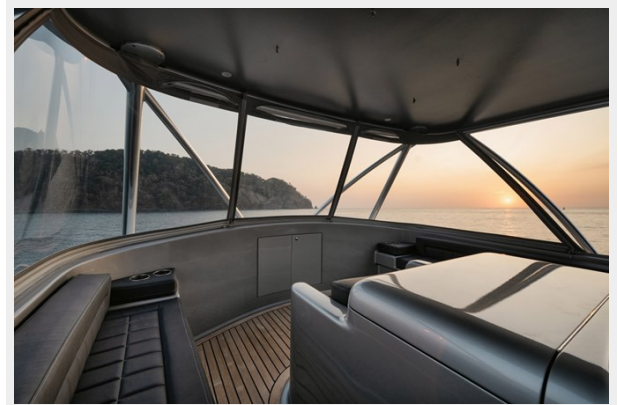
29a



29b



30



31



32



33



34



35



36



37



38



39



40



41a



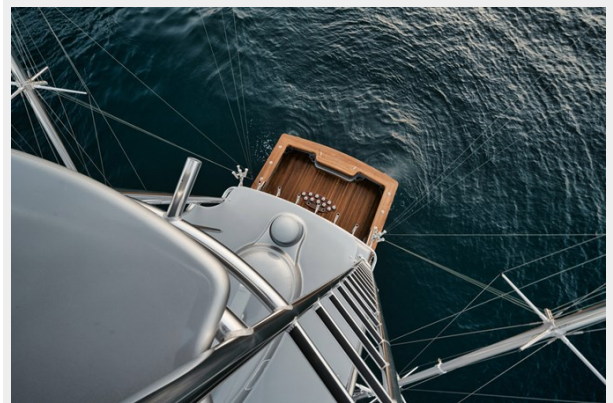
41b



42



43



44



45



46



47



48



49



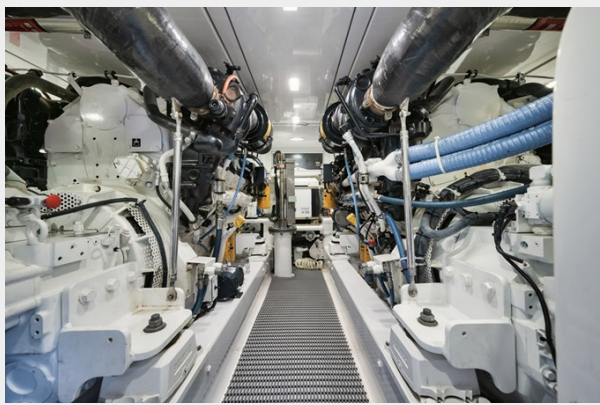
50



51



52



53



54



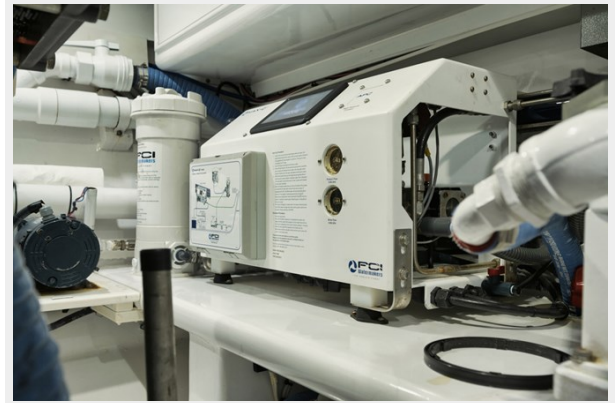
55



56



57



58



59



70a



71



72



74



75



76



77



78



79



CONTACTS

Andrey Shestakov, leading yacht broker of the sales department of Shestakov Yacht Sales Inc. Shestakov Yacht Sales Inc., the official representative of the Miami/Fort Lauderdale FL headquarters.

Contact details

Email: andrey@shestakovyachtsales.com

Web: shestakovyachtsales.com/en/

Telephones

USA: +1(954)274-4435

Office hours

Monday – Saturday: **9:00 - 21:00** EDT

Sunday: **closed**

Address



Harbour Towne Marina, 850 NE 3rd St,
STE 213, Dania, FL 33004