

FRUITION — HORIZON



Builder: HORIZON

Year Built: 2019

Model: Catamaran

Price: PRICE ON APPLICATION

Location: United States

LOA: 60' 9" (18.52mm)

Beam: 24.5

Min Draft: 4' 10" (1.47mm)

Max Draft: 5' (1.52mm)

Cruise Speed: 18 Knots Kts. (21 MPH)

Max Speed: 22 Knots Kts. (25 MPH)

Our experienced yacht broker, Andrey Shestakov, will help you choose and buy a yacht that best suits your needs **FRUITION — HORIZON** from our catalogue. Presently, at Shestakov Yacht Sales Inc., we have a wide variety of yachts available on our sale's list. We also work in close contact with all the big yacht manufacturers from all over the world.

If you would like to buy a yacht **FRUITION — HORIZON** or would like help answering any questions concerning purchasing, selling or chartering a yacht, please call **+1(954)274-4435**

TABLE OF CONTENTS

TABLE OF CONTENTS	2
SPECIFICATIONS	4
Overview	4
Basic Information	4
Dimensions	4
Speed, Capacities and Weight	4
Accommodations	4
Hull and Deck Information	5
Engine Information	5
PHOTOS	6
SUN LOUNGER 2	6
AT ANCHOR 2	6
AFT DECK 1	6
AFT DECK 2	6
FLYBRIDGE 1	6
AFT DECK 3	6
HELM 1	7
FLYBRIDGE DINING	7
FLYBRIDGE BAR	7
FLYBRIDGE LOUNGER	7
VENTURE 14 TENDER	7
SALON 1	7
SALON 2	8
SALON 3	8
GALLEY 1	8
GALLEY STORAGE	8
GALLEY QUARTZ	8
MASTER CABIN 1	8

MASTER CABIN 2	9
MASTER BATHROOM	9
VIP PASSAGE	9
VIP QUEEN	9
VIP BATHROOM	9
PORT TWIN	9
STB CABIN WORK BENCH	10
PORT TWIN LOOKING AFT	10
STB CABIN FREEZER	10
ELECTRICAL ROOM 2	10
ELECTRICAL PANEL	11
CONTACTS	12
Contact details	12
Telephones	12
Office hours	12
Address	12

SPECIFICATIONS

Overview

N/A

Basic Information

Category: Catamaran

Model Year: 2020

Year Built: 2019

Country: United States

Dimensions

LOA: 60' 9" (18.52mm)

Beam: 24.5

Min Draft: 4' 10" (1.47mm)

Max Draft: 5' (1.52mm)

Speed, Capacities and Weight

Cruise Speed: 18 Knots Kts. (21 MPH)

Cruise Speed Range: 400

Max Speed: 22 Knots Kts. (25 MPH)

Gross Tonnage: 40 Pounds

Water Capacity: 250 Gallons

Holding Tank: 80 Gal Gallons

Fuel Capacity: 1000 Gal Gallons

Fuel Consumption: 40 Gal Gallons

Accommodations

Total Cabins: 3

Total Berths: 3

Sleeps: 6

Total Heads: 3

Hull and Deck Information

Hull Material: Advanced Composites

Deck Material: Composite Fiberglass

Hull Configuration: Catamaran

Hull Color: White

Hull Designer: Angelo Lavranos

Interior Designer: LEIGH FORD

Engine Information

Engines: 2

Manufacturer: Cummins

Engine Type: Inboard

Fuel Type: Diesel

PHOTOS

AT ANCHOR 2



SUN LOUNGER 2



AFT DECK 1



AFT DECK 2



AFT DECK 3



FLYBRIDGE 1



HELM 1



FLYBRIDGE DINING



FLYBRIDGE BAR



FLYBRIDGE LOUNGER



VENTURE 14 TENDER



SALON 1



SALON 2



SALON 3



GALLEY 1



GALLEY STORAGE



GALLEY QUARTZ



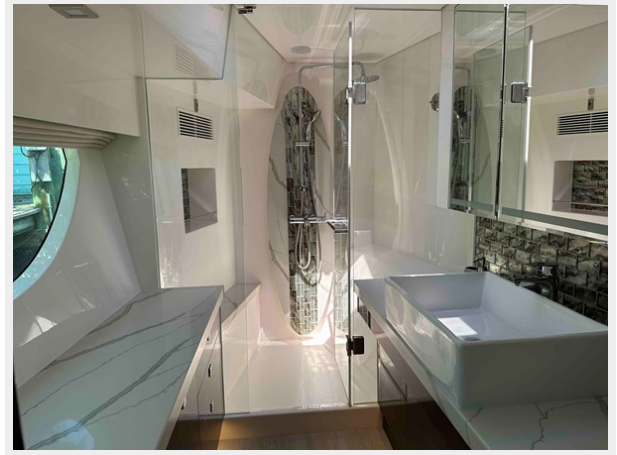
MASTER CABIN 1



MASTER CABIN 2



MASTER BATHROOM



VIP PASSAGE



VIP QUEEN



VIP BATHROOM



PORT TWIN



PORT TWIN LOOKING AFT



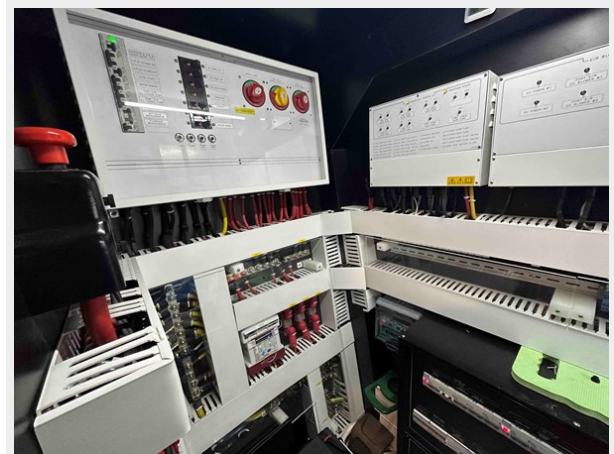
STB CABIN WORK BENCH



STB CABIN FREEZER



ELECTRICAL ROOM 2



ELECTRICAL PANEL



CONTACTS

Andrey Shestakov, leading yacht broker of the sales department of Shestakov Yacht Sales Inc. Shestakov Yacht Sales Inc., the official representative of the Miami/Fort Lauderdale FL headquarters.

Contact details

Email: andrey@shestakovyachtsales.com

Web: shestakovyachtsales.com/en/

Telephones

USA: +1(954)274-4435

Office hours

Monday – Saturday: **9:00 - 21:00** EDT

Sunday: **closed**

Address



Harbour Towne Marina, 850 NE 3rd St,
STE 213, Dania, FL 33004