

SEAWEED — SHANNON



Builder: SHANNON

Year Built: 1988

Model: Motor Yacht

Price: PRICE ON APPLICATION

Location: United States

LOA: 32' (9.75mm)

Beam: 12

Max Draft: 3' 4" (1.02mm)

Cruise Speed: 18 Knots Kts. (21 MPH)

Max Speed: 24 Knots Kts. (28 MPH)

Our experienced yacht broker, Andrey Shestakov, will help you choose and buy a yacht that best suits your needs **Seaweed — SHANNON** from our catalogue. Presently, at Shestakov Yacht Sales Inc., we have a wide variety of yachts available on our sale's list. We also work in close contact with all the big yacht manufacturers from all over the world.

If you would like to buy a yacht **Seaweed — SHANNON** or would like help answering any questions concerning purchasing, selling or chartering a yacht, please call **+1(954)274-4435**

TABLE OF CONTENTS

TABLE OF CONTENTS	2
SPECIFICATIONS	5
Overview	5
Basic Information	5
Dimensions	5
Speed, Capacities and Weight	6
Accommodations	6
Hull and Deck Information	6
Engine Information	6
PHOTOS	7
1_2797120_	7
2_2797120_	7
3_2797120_	7
4_2797120_	7
6_2797120_	7
7_2797120_	7
8_2797120_	8
9_2797120_	8
10_2797120_	8
11_2797120_	8
12_2797120_	8
13_2797120_	8
14_2797120_	9
15_2797120_	9
16_2797120_	9
17_2797120_	9
18_2797120_	9
19_2797120_	9

20_2797120_	10
21_2797120_	10
22_2797120_	10
23_2797120_	10
24_2797120_	10
25_2797120_	10
26_2797120_	11
27_2797120_	11
28_2797120_	11
29_2797120_	11
30_2797120_	11
31_2797120_	11
32_2797120_	12
33_2797120_	12
34_2797120_	12
35_2797120_	12
36_2797120_	12
37_2797120_	12
38_2797120_	13
39_2797120_	13
40_2797120_	13
41_2797120_	13
42_2797120_	13
43_2797120_	13
44_2797120_	14
45_2797120_	14
46_2797120_	14
47_2797120_	14
48_2797120_	14

49_2797120_	14
50_2797120_	15
51_2797120_	15
52_2797120_	15
53_2797120_	15
54_2797120_	15
55_2797120_	15
56_2797120_	16
57_2797120_	16
58_2797120_	16
59_2797120_	16
60_2797120_	16
61_2797120_	16
62_2797120_	17
63_2797120_	17
64_2797120_	17
65_2797120_	17
66_2797120_	17
67_2797120_	17
68_2797120_	18
69_2797120_	18
70_2797120_	18
71_2797120_	18
72_2797120_	18
CONTACTS	19
Contact details	19
Telephones	19
Office hours	19
Address	19

SPECIFICATIONS

Overview

"Seaweed" was built by the word-renown Shannon Boat Company. It is a nicely equiped cruiser that has been well appointed and maintained by her current owners. They have been described as rugged offshore machines that don't forget the family or comfort. She has been repowered with two clean 1999 Yanmar 230 Hp engines with approximately 1350 hours.

Huge open cockpit with tons of in deck storage and a transom door that opens to the swim platform for easy boarding!

Seaweed is the perfect example of a boat that can do it all. It has a great layout that will not disapoint!

Low Hours!!

Fuel Burn:

2.75 gph at 7 knts - 1350 rpm

12 gph at 17 knts - 2800 rpm

Basic Information

Category: Motor Yacht

Model Year: 1988

Year Built: 1988

Country: United States

Dimensions

LOA: 32' (9.75mm)

Beam: 12

Max Draft: 3' 4" (1.02mm)

Speed, Capacities and Weight

Cruise Speed: 18 Knots Kts. (21 MPH)

Max Speed: 24 Knots Kts. (28 MPH)

Water Capacity: 80 Gallons

Holding Tank: 38 Gal Gallons

Fuel Capacity: 250 Gal Gallons

Accommodations

Total Cabins: 1

Hull and Deck Information

Hull Material: Fiberglass

Engine Information

Engines: 2

Manufacturer: Yanmar

Engine Type: Inboard

Fuel Type: Diesel

PHOTOS

1_2797120_



2_2797120_



3_2797120_



4_2797120_



6_2797120_



7_2797120_



8_2797120_



9_2797120_



10_2797120_



11_2797120_



12_2797120_



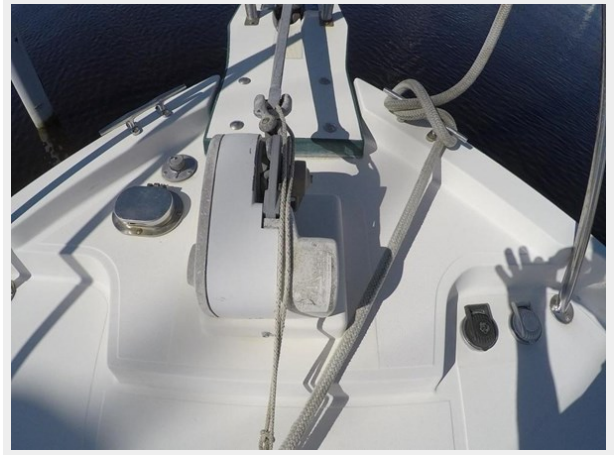
13_2797120_



14_2797120_



15_2797120_



16_2797120_



17_2797120_



18_2797120_



19_2797120_



20_2797120_



21_2797120_



22_2797120_



23_2797120_



24_2797120_



25_2797120_



26_2797120_



27_2797120_



28_2797120_



29_2797120_



30_2797120_



31_2797120_



32_2797120_



33_2797120_



34_2797120_



35_2797120_



36_2797120_



37_2797120_



38_2797120_



39_2797120_



40_2797120_



41_2797120_



42_2797120_



43_2797120_



44_2797120_



45_2797120_



46_2797120_



47_2797120_



48_2797120_



49_2797120_



50_2797120_



51_2797120_



52_2797120_



53_2797120_



54_2797120_



55_2797120_



56_2797120_



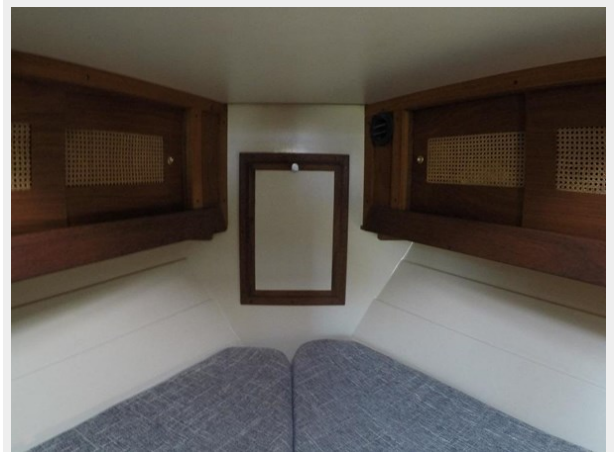
57_2797120_



58_2797120_



59_2797120_



60_2797120_



61_2797120_



62_2797120_



63_2797120_



64_2797120_



65_2797120_



66_2797120_



67_2797120_



68_2797120_



69_2797120_



70_2797120_



71_2797120_



72_2797120_



CONTACTS

Andrey Shestakov, leading yacht broker of the sales department of Shestakov Yacht Sales Inc. Shestakov Yacht Sales Inc., the official representative of the Miami/Fort Lauderdale FL headquarters.

Contact details

Email: andrey@shestakovyachtsales.com

Web: shestakovyachtsales.com/en/

Telephones

USA: +1(954)274-4435

Office hours

Monday – Saturday: **9:00 - 21:00** EDT

Sunday: **closed**

Address



Harbour Towne Marina, 850 NE 3rd St,
STE 213, Dania, FL 33004