

ONE DAY @ A TIME — CARVER



Builder: CARVER

Year Built: 1995

Model: Motor Yacht

Price: PRICE ON APPLICATION

Location: United States

LOA: 39' (11.89m)

Beam: 13.25

Max Draft: 3' 8" (1.12m)

Our experienced yacht broker, Andrey Shestakov, will help you choose and buy a yacht that best suits your needs **One Day @ a Time — CARVER** from our catalogue. Presently, at Shestakov Yacht Sales Inc., we have a wide variety of yachts available on our sale's list. We also work in close contact with all the big yacht manufacturers from all over the world.

If you would like to buy a yacht **One Day @ a Time — CARVER** or would like help answering any questions concerning purchasing, selling or chartering a yacht, please call **+1(954)274-4435**

TABLE OF CONTENTS

TABLE OF CONTENTS	2
SPECIFICATIONS	4
Overview	4
Basic Information	4
Dimensions	4
Speed, Capacities and Weight	5
Accommodations	5
Hull and Deck Information	5
Engine Information	5
PHOTOS	6
1_2797332_	6
0_2797332_	6
2_2797332_	6
3_2797332_	6
4_2797332_	7
5_2797332_	7
6_2797332_	7
7_2797332_	7
8_2797332_	7
9_2797332_	7
10_2797332_	7
11_2797332_	7
12_2797332_	8
13_2797332_	8
14_2797332_	8
15_2797332_	8
16_2797332_	8
17_2797332_	8

19_2797332_	9
18_2797332_	9
20_2797332_	9
21_2797332_	9
22_2797332_	9
23_2797332_	9
24_2797332_	10
25_2797332_	10
28_2797332_	10
29_2797332_	10
30_2797332_	10
31_2797332_	10
CONTACTS	11
Contact details	11
Telephones	11
Office hours	11
Address	11

SPECIFICATIONS

Overview

The Carver 390 Cockpit Motor Yacht is a cockpit version of Carver's popular 355/356 Motor Yacht. Aside from the versatility that cockpits offer. They make great diving or fishing platforms and boarding is easy. The well arranged fly bridge has plenty of guest seating. The interior is surprisingly complete and includes two heads, a roomy galley, full dinette, and double berths in both staterooms giving the feel of big-boat accommodations. The salon is open and surprisingly spacious. and a well-arranged flybridge with plenty of guest seating.

It includes:

- 2 staterooms and 2 heads
- 2 air conditioning units
- A full size galley and convertible dinette
- An open salon and lower helm
- A roomy cockpit
- Aft deck with molded steps to the enclosed flybridge
- Garmin GPSmap 741xs
- Auto Pilot
- Windlass
- Generator

Basic Information

Category: Motor Yacht

Model Year: 1995

Year Built: 1995

Country: United States

Dimensions

LOA: 39' (11.89mm)

Beam: 13.25

Max Draft: 3' 8" (1.12mm)

Speed, Capacities and Weight

Water Capacity: 80 Gallons

Holding Tank: 36 Gal Gallons

Fuel Capacity: 330 Gal Gallons

Accommodations

Total Cabins: 2

Total Heads: 2

Hull and Deck Information

Hull Material: Fiberglass

Engine Information

Engines: 2

Manufacturer: Crusader

Engine Type: Inboard

Fuel Type: Gas/Petrol

PHOTOS

0_2797332_



1_2797332_



2_2797332_



3_2797332_



4_2797332_



5_2797332_



6_2797332_



7_2797332_



8_2797332_



9_2797332_



10_2797332_



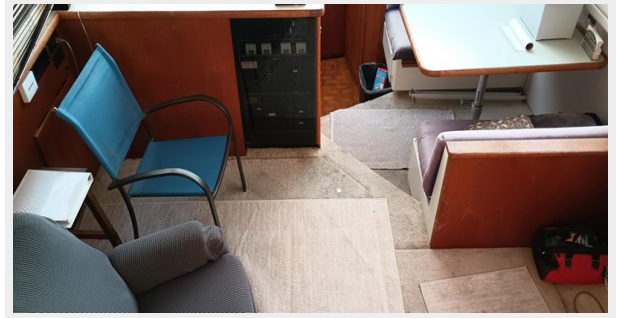
11_2797332_



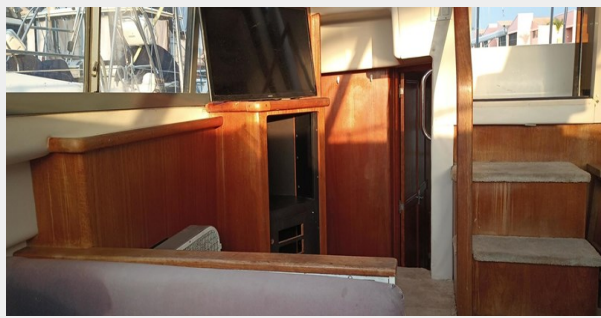
12_2797332_



13_2797332_



14_2797332_



15_2797332_



16_2797332_



17_2797332_



18_2797332_



19_2797332_



20_2797332_



21_2797332_



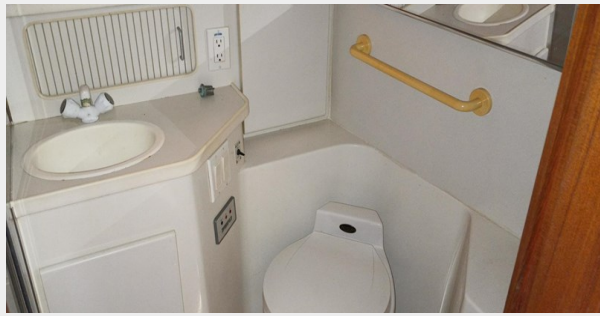
22_2797332_



23_2797332_



24_2797332_



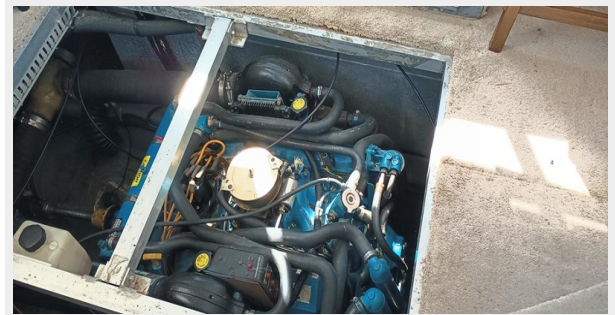
25_2797332_



28_2797332_



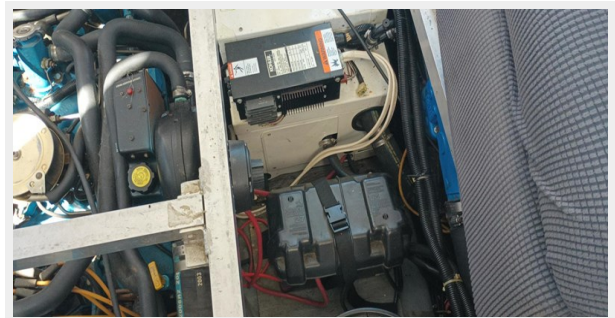
29_2797332_



30_2797332_



31_2797332_



CONTACTS

Andrey Shestakov, leading yacht broker of the sales department of Shestakov Yacht Sales Inc. Shestakov Yacht Sales Inc., the official representative of the Miami/Fort Lauderdale FL headquarters.

Contact details

Email: andrey@shestakovyachtsales.com

Web: shestakovyachtsales.com/en/

Telephones

USA: +1(954)274-4435

Office hours

Monday – Saturday: **9:00 - 21:00** EDT

Sunday: **closed**

Address



Harbour Towne Marina, 850 NE 3rd St,
STE 213, Dania, FL 33004