

YES DEAR — REGAL



Builder: REGAL

Year Built: 2022

Model: cruiser

Price: PRICE ON APPLICATION

Location: United States

LOA: 44' (13.41mm)

Beam: 13

Min Draft: 2' 9" (0.84mm)

Max Draft: 4' 2" (1.27mm)

Our experienced yacht broker, Andrey Shestakov, will help you choose and buy a yacht that best suits your needs **Yes Dear — REGAL** from our catalogue. Presently, at Shestakov Yacht Sales Inc., we have a wide variety of yachts available on our sale's list. We also work in close contact with all the big yacht manufacturers from all over the world.

If you would like to buy a yacht **Yes Dear — REGAL** or would like help answering any questions concerning purchasing, selling or chartering a yacht, please call **+1(954)274-4435**

TABLE OF CONTENTS

TABLE OF CONTENTS	2
SPECIFICATIONS	4
Overview	4
Basic Information	4
Dimensions	4
Speed, Capacities and Weight	4
Accommodations	4
Hull and Deck Information	5
Engine Information	5
PHOTOS	6
2	6
3	6
4	6
5	6
6	6
7	6
8	7
9	7
10	7
11	7
12	7
13	7
14	8
15	8
16	8
17	8
19	8
18	8

21	9
20	9
22	9
23	9
24	9
25	9
26	10
27	10
28	10
29	10
30	10
31	10
32	11
33	11
35	11
34	11
36	11
37	11
38	12
39	12
40	12
41	12
42	13
CONTACTS	14
Contact details	14
Telephones	14
Office hours	14
Address	14

SPECIFICATIONS

Overview

We are excited to bring this beautiful, fully loaded Regal 42 FXO to market. She comes complete with almost every factory option as well as a few extras not offered by the factory. Her flybridge canvas has been changed from factory white to black and a 3 sided eisenglass enclosure has been added to really elevate the yacht feel!

With 307 hours and a perfect maintenance record, she is past the new boat growing pains and into the prime of her life! With over 4 years of warranty left on the engines and components, the new owner will truly be able to enjoy some worry-free boating!

Basic Information

Category: cruiser

Model Year: 2022

Year Built: 2022

Country: United States

Dimensions

LOA: 44' (13.41mm)

Beam: 13

Min Draft: 2' 9" (0.84mm)

Max Draft: 4' 2" (1.27mm)

Speed, Capacities and Weight

Water Capacity: 73 Gallons

Holding Tank: 29 Gal Gallons

Fuel Capacity: 500 Gal Gallons

Accommodations

Total Cabins: 2

Hull and Deck Information

Hull Material: Fiberglass

Engine Information

Engines: 3

Manufacturer: Yamaha

Engine Type: Outboard

Fuel Type: Gas/Petrol

PHOTOS

2



3



4



5



6



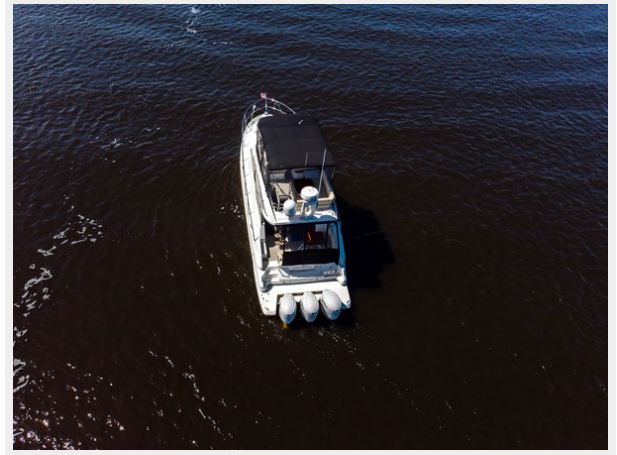
7



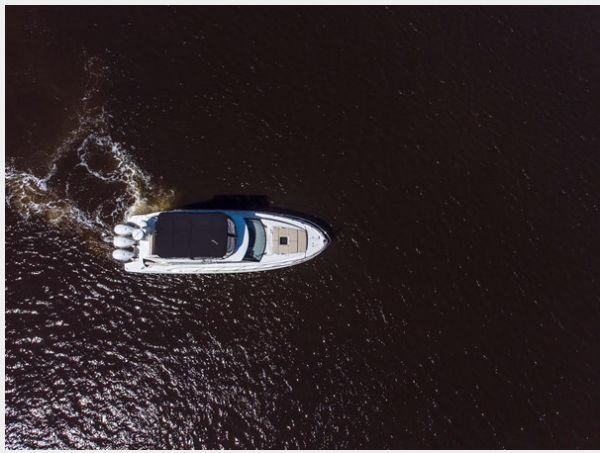
8



9



10



11



12



13



14



15



16



17



18



19



20



21



22



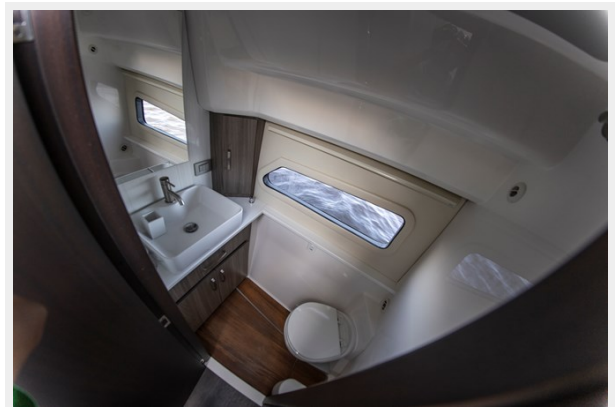
23



24



25



26



27



28



29



30



31



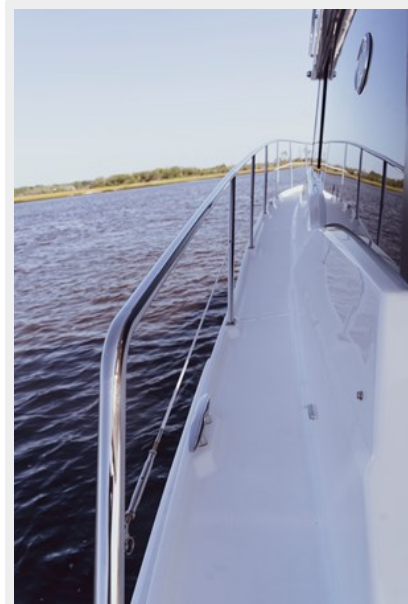
32



33



35



34



36



37



38



39



40



41



42



CONTACTS

Andrey Shestakov, leading yacht broker of the sales department of Shestakov Yacht Sales Inc. Shestakov Yacht Sales Inc., the official representative of the Miami/Fort Lauderdale FL headquarters.

Contact details

Email: andrey@shestakovyachtsales.com

Web: shestakovyachtsales.com/en/

Telephones

USA: +1(954)274-4435

Office hours

Monday – Saturday: **9:00 - 21:00** EDT

Sunday: **closed**

Address



Harbour Towne Marina, 850 NE 3rd St,
STE 213, Dania, FL 33004