

# LATITUDE — CONCORDE YACHTS, LTD



**Builder:** CONCORDE YACHTS, LTD

**Year Built:** 1991

**Model:** Motorsailer

**Price:** PRICE ON APPLICATION

**Location:** Italy

**LOA:** 131' 3" (40mm)

**Beam:** 29.52

**Min Draft:** 12' 5" (3.78mm)

**Cruise Speed:** 10 Knots Kts. (12 MPH)

**Max Speed:** 12 Knots Kts. (14 MPH)

Our experienced yacht broker, Andrey Shestakov, will help you choose and buy a yacht that best suits your needs Latitude — CONCORDE YACHTS, LTD from our catalogue. Presently, at Shestakov Yacht Sales Inc., we have a wide variety of yachts available on our sale's list. We also work in close contact with all the big yacht manufacturers from all over the world.

If you would like to buy a yacht Latitude — CONCORDE YACHTS, LTD or would like help answering any questions concerning purchasing, selling or chartering a yacht, please call +1(954)274-4435

# TABLE OF CONTENTS

TABLE OF CONTENTS	2
SPECIFICATIONS	4
Overview	4
Basic Information	4
Dimensions	4
Speed, Capacities and Weight	5
Accommodations	5
Hull and Deck Information	5
Engine Information	5
PHOTOS	6
SY Latitude Aft Deck	6
SY Latitude Bathroom 2	6
SY Latitude Bathroom	6
SY Latitude Bridge Deck 2	6
Sy Latitude Cruising	6
SY Latitude Bridge Deck	6
SY Latitude Dining Room	7
SY Latitude Dining Room 2	7
SY Latitude Dining Room 3	7
SY Latitude Dining Room 4	7
SY Latitude Exterior 2	7
SY Latitude Exterior 4	7
SY Latitude Exterior 5	8
SY Latitude Exterior 6	8
SY Latitude Exterior 7	8
SY Latitude Galley	8
SY Latitude Main Saloon 2	8
SY Latitude main saloon 3	8

---

SY Latitude main saloon 4	9
SY Latitude main saloon 5	9
SY Latitude Main Saloon	9
SY Latitude Master cabin	9
SY Latitude PS	9
SY Latitude Owner's Office	9
SY Latitude Studio	10
SY Latitude twin Bedrooms 2	10
SY Latitude twin bedrooms	10
SY Latitude twin Bedrooms 3	10
<b>CONTACTS</b>	<b>11</b>
Contact details	11
Telephones	11
Office hours	11
Address	11

# SPECIFICATIONS

---

## Overview

---

The Latitude, previously named Mirabella I, she is one of 3 Mirabella 40 models and features exterior design by Farr Yacht Design, while her interior was penned by Concorde Yachts, with naval architecture by Farr Yacht Design.

Launched in 1991, she has undergone years of technical refit, and in that sense she looks as good as new, with the last refit occurring in 2022. Her layout has recently been disassembled and inspected, and all necessary upgrades have been made. She offers a large volume of six cabins for 12 guests. The main and upper salon and owner's office are in excellent condition.

Latitude has been designed to comfortably accommodate up to 12 guests in 6 suites comprising two VIP cabins. She is also capable of carrying up to 6 crew onboard to ensure a relaxed luxury yacht experience.

Latitude is built with a GRP hull and composite superstructure, with teak decks.

Her top speed is 11.0 kn, her cruising speed is 10.0 kn, and she boasts a maximum cruising range of 3500.0 nm at 9.0 kn, with power coming from a 1 x Diesel MAN 450hp 2017.

Sleeps 12 overnight

LATITUDE has crew quarters for six

2017/2022 refit

Ample exterior dining areas with fold-away tables

## Basic Information

---

**Category:** Motorsailor

**Model Year:** 1991

**Year Built:** 1991

**Country:** Italy

## Dimensions

---

**LOA:** 131' 3" (40mm)

**LWL:** 114' 10" (35mm)

**Beam:** 29.52

**Min Draft:** 12' 5" (3.78mm)

---

## Speed, Capacities and Weight

---

**Cruise Speed:** 10 Knots Kts. (12 MPH)

**Cruise Speed Range:** 3500

**Max Speed:** 12 Knots Kts. (14 MPH)

**Gross Tonnage:** 230 Pounds

**Water Capacity:** 11000 Gallons

**Holding Tank:** 726.47 Gal Gallons

**Fuel Capacity:** 3539.91 Gal Gallons

**Fuel Consumption:** 15.85 Gal Gallons

---

## Accommodations

---

**Total Cabins:** 6

**Sleeps:** 12

**Crew Heads:** 6

---

## Hull and Deck Information

---

**Hull Material:** Fiberglass

**Deck Material:** Fiberglass

**Hull Color:** White

**Hull Designer:** Bruce Farr

**Exterior Designer:** Bruce Farr

**Interior Designer:** Peter Sijm

---

## Engine Information

---

**Engines:** 2

**Manufacturer:** MAN

**Engine Type:** Inboard

**Fuel Type:** Diesel

# PHOTOS

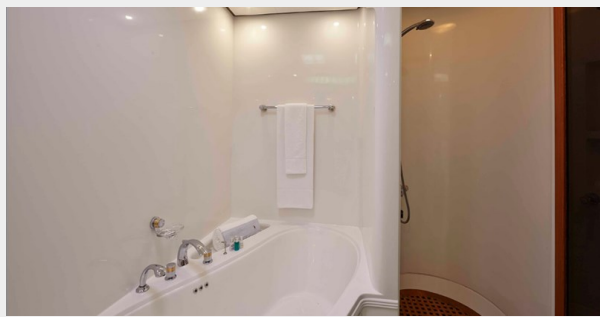
**SY Latitude Aft Deck**



**SY Latitude Bathroom 2**



**SY Latitude Bathroom**



**SY Latitude Bridge Deck 2**



**SY Latitude Bridge Deck**



**Sy Latitude Cruising**





**SY Latitude Dining Room**



**SY Latitude Dining Room 2**



**SY Latitude Dining Room 3**



**SY Latitude Dining Room 4**



**SY Latitude Exterior 2**



**SY Latitude Exterior 4**





**SY Latitude Exterior 5**



**SY Latitude Exterior 6**



**SY Latitude Exterior 7**



**SY Latitude Galley**



**SY Latitude Main Saloon 2**



**SY Latitude main saloon 3**





**SY Latitude main saloon 4**



**SY Latitude main saloon 5**



**SY Latitude Main Saloon**



**SY Latitude Master cabin**



**SY Latitude Owner's Office**



**SY Latitude PS**



### SY Latitude Studio



### SY Latitude twin Bedrooms 2



### SY Latitude twin Bedrooms 3



### SY Latitude twin bedrooms



# CONTACTS

---

Andrey Shestakov, leading yacht broker of the sales department of Shestakov Yacht Sales Inc. Shestakov Yacht Sales Inc., the official representative of the Miami/Fort Lauderdale FL headquarters.

## Contact details

---

Email: [andrey@shestakovyachtsales.com](mailto:andrey@shestakovyachtsales.com)

Web: [shestakovyachtsales.com/en/](http://shestakovyachtsales.com/en/)

## Telephones

---

USA: +1(954)274-4435

## Office hours

---

Monday – Saturday: **9:00 - 21:00** EDT

Sunday: **closed**

## Address

---



Harbour Towne Marina, 850 NE 3rd St,  
STE 213, Dania, FL 33004