

JUST CRUISING — SEA RAY



Builder: SEA RAY

Year Built: 1990

Model: cruiser

Price: PRICE ON APPLICATION

Location: United States

LOA: 39' 5" (12.01mm)

Beam: 12.33

Max Draft: 2' 5" (0.74mm)

Cruise Speed: 20 Knots Kts. (23 MPH)

Max Speed: 28 Knots Kts. (32 MPH)

Our experienced yacht broker, Andrey Shestakov, will help you choose and buy a yacht that best suits your needs **JUST CRUISING — SEA RAY** from our catalogue. Presently, at Shestakov Yacht Sales Inc., we have a wide variety of yachts available on our sale's list. We also work in close contact with all the big yacht manufacturers from all over the world.

If you would like to buy a yacht **JUST CRUISING — SEA RAY** or would like help answering any questions concerning purchasing, selling or chartering a yacht, please call **+1(954)274-4435**

TABLE OF CONTENTS

TABLE OF CONTENTS	2
SPECIFICATIONS	4
Overview	4
Basic Information	4
Dimensions	4
Speed, Capacities and Weight	5
Accommodations	5
Hull and Deck Information	5
Engine Information	5
PHOTOS	6
2	6
3	6
4	6
5	6
6	6
7	6
8	7
9	7
10	7
11	7
12	7
13	7
14	8
15	8
16	8
17	8
18	8
19	8

20	9
21	9
22	9
23	9
24	9
25	9
26	10
27	10
28	10
29	10
30	10
31	10
32	11
33	11
34	11
35	11
CONTACTS	12
Contact details	12
Telephones	12
Office hours	12
Address	12

SPECIFICATIONS

Overview

WOW is what you will say when you step aboard this classic Sea Ray Express Cruiser. It is super clean inside and out with no old boat smells and the bilge and engine compartment are immaculate. She has been updated with new soft goods, hardwood flooring, Garmin GPS, Standard Horizon VHF Radio, Flatscreen TV and more. Like most Sea Ray models, the 350 Express Cruiser (called the 370 Express Cruiser in 1993–95) has aged well over the years. Styling trends are a moving target, of course, but looking at a boat as old as the 350/370 Express is to appreciate the skills of past-generation Sea Ray designers. Built on a deep-V hull with prop pockets and a wide 12-foot, 4-inch beam, the interior of the Express Cruiser differs from Sea Ray’s Sundancer models in that there is no mid-stateroom below the helm. A huge semicircular sofa that converts to a sleeper for two dominates the wide-open salon. Forward, through a privacy curtain, the stateroom has an angled double bed as well as a mirrored vanity. The head contains a separate stall shower and both day door/stateroom door access. Topside, the spacious single-level cockpit has a double helm seat forward, an aft-facing double cockpit seat, wet bar, and a bench seat at the transom. She was REPOWERED with twin fresh water cooled Gen 6 MerCruiser 301 HP inboards that cruise at 20 knots and reach a top speed of 28–29 knots. A new 6 kw Kohler Diesel Generator was added in 2022. This is a great opportunity to pick up a super nice Express Cruiser that will provide years of quality time on the water without breaking the bank. Call today and be on the water next weekend.

Basic Information

Category: cruiser	Sub Category: Express
Model Year: 1990	Year Built: 1990
Country: United States	

Dimensions

LOA: 39' 5" (12.01mm)	Beam: 12.33
Max Draft: 2' 5" (0.74mm)	

Speed, Capacities and Weight

Cruise Speed: 20 Knots Kts. (23 MPH)

Max Speed: 28 Knots Kts. (32 MPH)

Water Capacity: 70 Gallons

Holding Tank: 20 Gal Gallons

Fuel Capacity: 250 Gal Gallons

Accommodations

Total Cabins: 1

Total Heads: 1

Hull and Deck Information

Hull Material: Fiberglass

Engine Information

Engines: 2

Manufacturer: Mercruiser

Engine Type: Inboard

Fuel Type: Gas/Petrol

PHOTOS

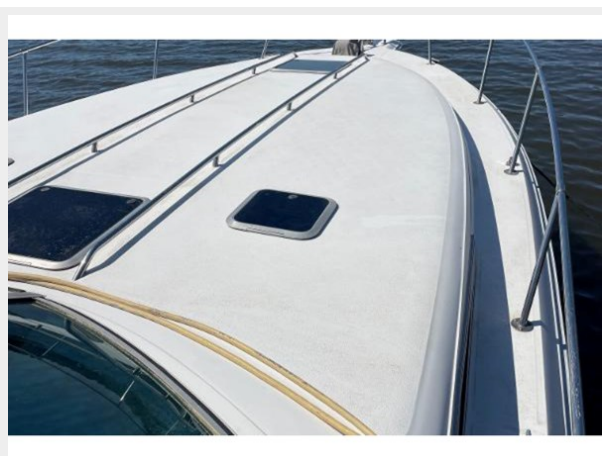
2



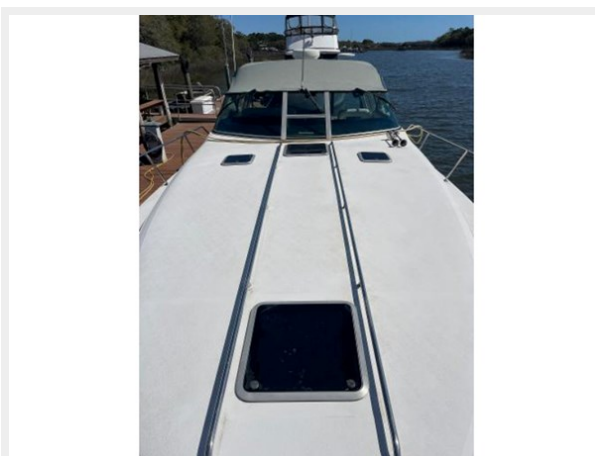
3



4



5



6



7



8



9



10



11



12



13



14



15



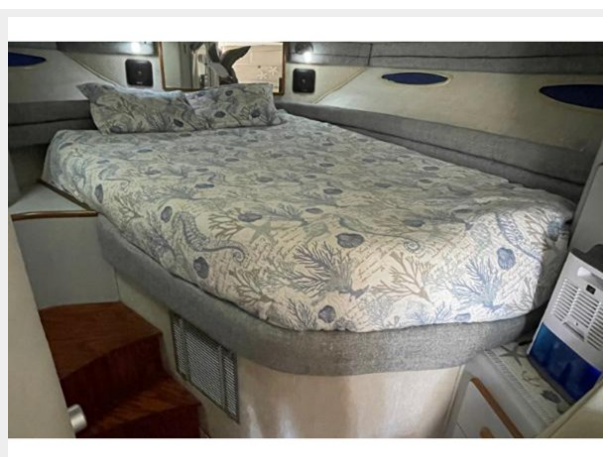
16



17



18



19



20



21



22



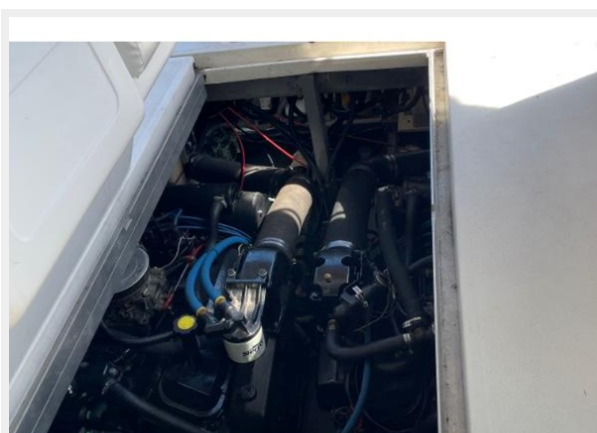
23



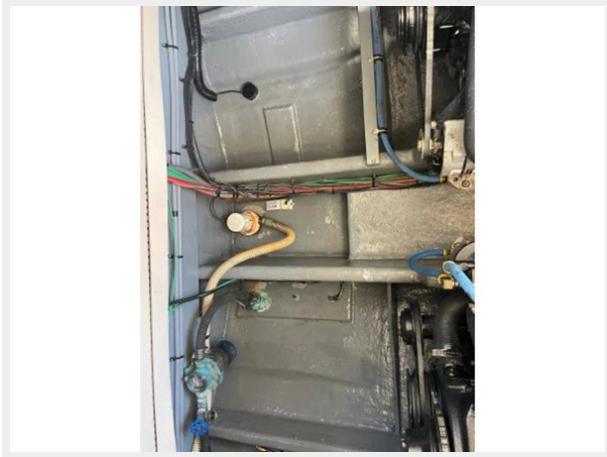
24



25



26



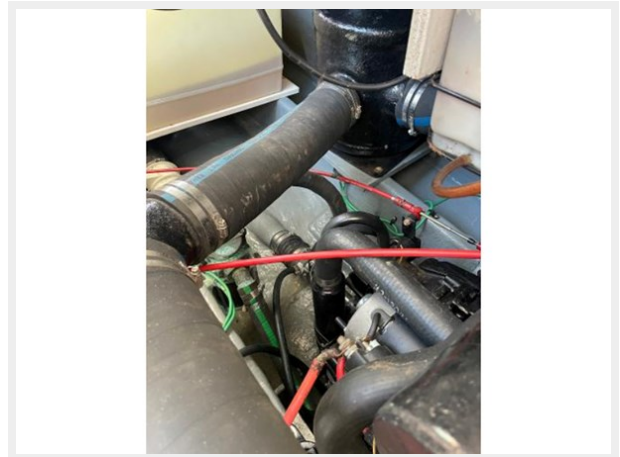
27



28



29



30



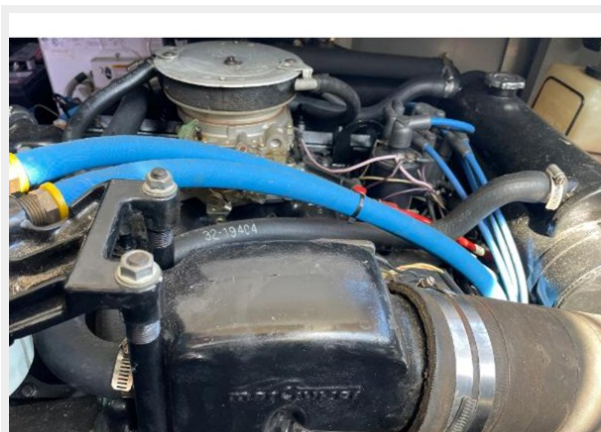
31



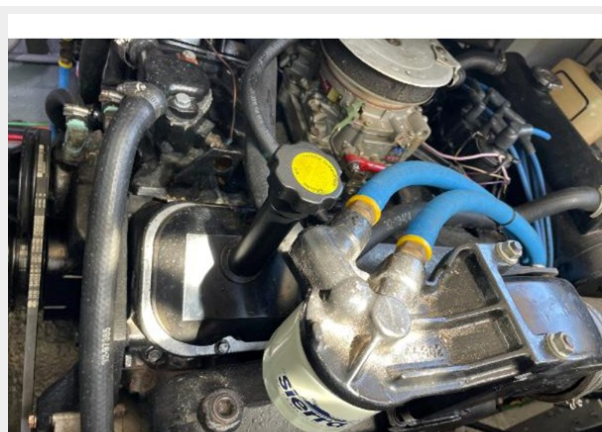
32



33



34



35



CONTACTS

Andrey Shestakov, leading yacht broker of the sales department of Shestakov Yacht Sales Inc. Shestakov Yacht Sales Inc., the official representative of the Miami/Fort Lauderdale FL headquarters.

Contact details

Email: **andrey@shestakovyachtsales.com**

Web: shestakovyachtsales.com/en/

Telephones

USA: **+1(954)274-4435**

Office hours

Monday – Saturday: **9:00 - 21:00 EDT**

Sunday: **closed**

Address



Harbour Towne Marina, 850 NE 3rd St,
STE 213, Dania, FL 33004