

FANCIER NANCI — CHEOY LEE



Builder: CHEOY LEE

Year Built: 2002

Model: Flybridge

Price: PRICE ON APPLICATION

Location: United States

LOA: 74' (22.56mm)

Beam: 20.16

Min Draft: 5' 5" (1.65mm)

Max Draft: 5' 7" (1.7mm)

Cruise Speed: 19 Knots Kts. (22 MPH)

Max Speed: 22 Knots Kts. (25 MPH)

Our experienced yacht broker, Andrey Shestakov, will help you choose and buy a yacht that best suits your needs **FANCIER NANCI — CHEOY LEE** from our catalogue. Presently, at Shestakov Yacht Sales Inc., we have a wide variety of yachts available on our sale's list. We also work in close contact with all the big yacht manufacturers from all over the world.

If you would like to buy a yacht **FANCIER NANCI — CHEOY LEE** or would like help answering any questions concerning purchasing, selling or chartering a yacht, please call **+1(954)274-4435**

TABLE OF CONTENTS

TABLE OF CONTENTS	2
SPECIFICATIONS	6
Basic Information	6
Dimensions	6
Speed, Capacities and Weight	6
Accommodations	6
Hull and Deck Information	6
Engine Information	7
PHOTOS	8
Salon Looking Forward	8
Salon to Stbd.	8
Salon to Stbd.	8
Salon to Stbd.	8
Salon to Port	8
Salon to Port	8
Salon to Port	9
Dining Area	9
Dining Area	9
Salon Looking Aft	9
Salon Stairs Up-Down	9
Day Head	9
Galley Looking Aft	10
Galley	10
Galley Looking Forward	10
Pilothouse Settee	10
Pilothouse Settee	10
Helm	10
Forward Companionway Laundry	11

Helm Seat	11
Captains Cabin	11
Forward VIP	11
Forward VIP	11
Forward VIP	11
Midship Accommodation Stairs	12
Forward Guest Head	12
Master to Stbd.	12
Master Looking Forward	12
Master Looking Aft	12
Master Emergency Escape	12
Master Looking to Port	13
Forward Master Head	13
Shower	13
Aft Master Head	13
Port Double Cabin	13
Port Double Cabin	13
Port Double Cabin	14
Port Cabin Head	14
Starboard Twin Cabin	14
Starboard Twin Cabin	14
Starboard Guest Head	14
Bow Area	14
Windlass Enclosure	15
Bow Sun Pad	15
Wide Walk Around Side Decks	15
Marquipt Sea Stairs	15
Aft Deck to Starboard	15
Aft Deck to Port	15

Boat Deck Ladder	16
Aft Deck Forward	16
Flybridge Access Hatch	16
Portside Dining	16
Stbd. Side Seating	16
Flybridge Looking Aft	16
Helm Covered	17
Helm Equipment	17
Helm Center	17
Stbd. Side of Helm	17
Tender	17
Hardtop Equipment	17
Boat Deck Grill	18
Boat Deck Cabinet	18
Engine Room Looking Forward	18
Port Engine	18
Port Engine from Forward	18
Stbd. Engine	18
Stbd. Engine from Forward	19
Port Generator	19
Stbd. Generator	19
Main Switch Panel	19
Forward of Stbd. Engine	19
Fuel Manifold	19
Fuel System	20
Port Aft Engine Room	20
Bow Quarter	20
Alt Profile	20
Stern Quarter	20

Aft Profile	20
Alt Profile	21
Stern Quarter	21
Bow Quarter	21
Stern	21
CONTACTS	22
Contact details	22
Telephones	22
Office hours	22
Address	22

SPECIFICATIONS

Basic Information

Category: Flybridge

Sub Category: Flybridge

Model Year: 2002

Year Built: 2002

Country: United States

Dimensions

LOA: 74' (22.56mm)

Beam: 20.16

Min Draft: 5' 5" (1.65mm)

Max Draft: 5' 7" (1.7mm)

Speed, Capacities and Weight

Cruise Speed: 19 Knots Kts. (22 MPH)

Max Speed: 22 Knots Kts. (25 MPH)

Water Capacity: 535 Gallons

Holding Tank: 118 Gal Gallons

Fuel Capacity: 1774 Gal Gallons

Accommodations

Total Cabins: 5

Sleeps: 9

Total Heads: 6

Hull and Deck Information

Hull Material: Fiberglass

Hull Configuration: Modified V-Hull

Hull Designer: Tom Fexas

Exterior Designer: Tom Fexas

Engine Information

Engines: 2

Manufacturer: Caterpillar

Engine Type: Inboard

Fuel Type: Diesel

PHOTOS

Salon Looking Forward



Salon to Stbd.



Salon to Stbd.



Salon to Stbd.



Salon to Port



Salon to Port



Salon to Port



Dining Area



Dining Area



Salon Looking Aft



Salon Stairs Up-Down



Day Head



Galley Looking Aft



Galley



Galley Looking Forward



Pilothouse Settee



Pilothouse Settee



Helm



Forward Companionway Laundry

Helm Seat



Captains Cabin



Forward VIP



Forward VIP



Forward VIP



Midship Accommodation Stairs

Forward Guest Head



Master to Stbd.



Master Looking Forward



Master Looking Aft



Master Emergency Escape



Master Looking to Port



Forward Master Head



Shower



Aft Master Head



Port Double Cabin



Port Double Cabin



Port Double Cabin



Port Cabin Head



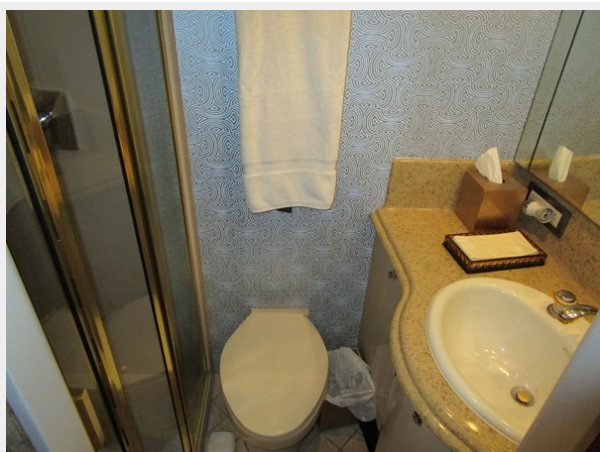
Starboard Twin Cabin



Starboard Twin Cabin



Starboard Guest Head



Bow Area



Windlass Enclosure



Bow Sun Pad



Wide Walk Around Side Decks



Marquitt Sea Stairs



Aft Deck to Starboard



Aft Deck to Port



Boat Deck Ladder



Aft Deck Forward



Flybridge Access Hatch



Portside Dining



Stbd. Side Seating



Flybridge Looking Aft



Helm Covered



Helm Equipment



Helm Center



Stbd. Side of Helm



Tender



Hardtop Equipment



Boat Deck Grill



Boat Deck Cabinet



Engine Room Looking Forward



Port Engine



Port Engine from Forward



Stbd. Engine



Stbd. Engine from Forward



Port Generator



Stbd. Generator



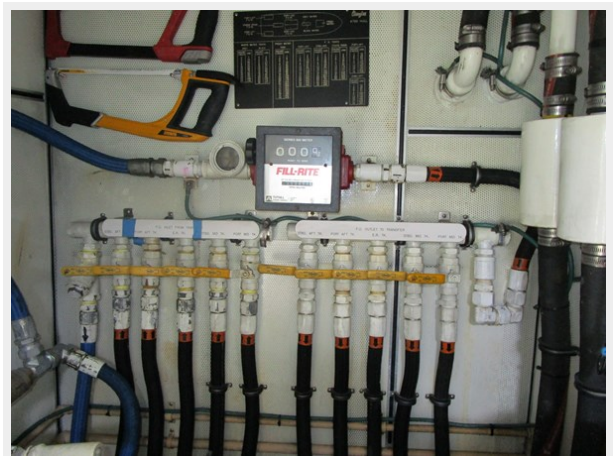
Main Switch Panel



Forward of Stbd. Engine



Fuel Manifold



Fuel System



Port Aft Engine Room



Bow Quarter



Alt Profile



Stern Quarter



Aft Profile



Alt Profile



Stern Quarter



Bow Quarter



Stern



CONTACTS

Andrey Shestakov, leading yacht broker of the sales department of Shestakov Yacht Sales Inc. Shestakov Yacht Sales Inc., the official representative of the Miami/Fort Lauderdale FL headquarters.

Contact details

Email: andrey@shestakovyachtsales.com

Web: shestakovyachtsales.com/en/

Telephones

USA: +1(954)274-4435

Office hours

Monday – Saturday: **9:00 - 21:00** EDT

Sunday: **closed**

Address



Harbour Towne Marina, 850 NE 3rd St,
STE 213, Dania, FL 33004