

BRAZIL — HEESEN YACHTS



Builder: HEESEN YACHTS

Year Built: 1993

Model: Semi-Displacement

Price: €5,400,000 EUR

Location: Netherlands

LOA: 144' 5" (44mm)

Beam: 27.82

Max Draft: 7' 3" (2.2mm)

Cruise Speed: 14 Knots Kts. (16 MPH)

Max Speed: 19 Knots Kts. (22 MPH)

Our experienced yacht broker, Andrey Shestakov, will help you choose and buy a yacht that best suits your needs **BRAZIL — HEESEN YACHTS** from our catalogue. Presently, at Shestakov Yacht Sales Inc., we have a wide variety of yachts available on our sale's list. We also work in close contact with all the big yacht manufacturers from all over the world.

If you would like to buy a yacht **BRAZIL — HEESEN YACHTS** or would like help answering any questions concerning purchasing, selling or chartering a yacht, please call **+1(954)274-4435**

TABLE OF CONTENTS

TABLE OF CONTENTS	2
SPECIFICATIONS	4
Overview	4
Basic Information	4
Dimensions	4
Speed, Capacities and Weight	5
Accommodations	5
Hull and Deck Information	5
Engine Information	5
PHOTOS	6
decks-023 - copie	6
main salon1 - copie	6
sky-bar-002 - copie	6
bathroom	6
master cabin1	6
master-bedroom-011	6
guest-rooms-double-002	7
guest-rooms-double-008	7
2023-04-13_Guy Fleury_MYSEA_Interior MY Brazil-117	7
sky-bar-004	7
2023-04-13_Guy Fleury_MYSEA_Interior MY Brazil-261	7
Sun deck evening	7
Jacuzzi	8
decks-016	8
Aerial	8
Aerial	8
Engine Room	8
Aerial	8

Engine room	9
Engine room	9
Main deck aft dining	9
brazil-yacht-63	9
Sundeck	9
Sundeck	9
Sundeck bar	10
Sundeck awnings	10
Swim platform	10
Bow	10
Side view	10
Bridge deck aft	10
CONTACTS	11
Contact details	11
Telephones	11
Office hours	11
Address	11

SPECIFICATIONS

Overview

Having just undergone an extensive refit in Holland at Zwijnenburg Shipyard (2022) Brazil is entering the market in superb condition. During her current ownership, nothing has been spared and she is turnkey ready!

Some of the key features and upgrades during 2022 refit are:

- New electric CMC Zero speed stabilisers
- New Kohler 125kw generators
- Newly installed jacuzzi
- Custom transformer passarelle and crane
- A 4 meter extension of her swim platform creating a huge sea-tearpace and socialising space
- 1.5 meter extension of her bridge deck to give her a nice sleek profile as well as increasing the space and volume on this deck
- Main switchboard completely rebuilt and new digital Tijssen MPA system installed
- New Deif units for her gensets and shore power
- Brand new 7.1m tender with diesel inboard 265hp
- ME recently serviced and ready to go

Brazil is a successful and appreciated charter yacht having completed the last 5 years cruising Croatia & Montenegro

Available for viewings in Rotterdam.

Basic Information

Category: Semi-Displacement

Sub Category: Semi-Displacement

Model Year: 1993

Year Built: 1993

Country: Netherlands

Dimensions

LOA: 144' 5" (44mm)

LWL: 131' 3" (40mm)

Beam: 27.82

Max Draft: 7' 3" (2.2mm)

Speed, Capacities and Weight

Cruise Speed: 14 Knots Kts. (16 MPH)

Cruise Speed Range: 3500

Max Speed: 19 Knots Kts. (22 MPH)

Gross Tonnage: 369 Pounds

Water Capacity: 12000 Gallons

Holding Tank: 792.52 Gal Gallons

Fuel Capacity: 17567.44 Gal Gallons

Fuel Consumption: 66.04 Gal Gallons

Accommodations

Total Cabins: 5

Total Berths: 5

Sleeps: 10

Total Heads: 6

Crew Cabin: 8

Crew Berths: 2

Crew Heads: 4

Hull and Deck Information

Hull Material: Aluminum

Deck Material: Teak

Hull Configuration: Semi-Displacement

Hull Color: White

Hull Designer: Gerhard Gilgenast and
Richard Hein

Exterior Designer: The A Group

Interior Designer: Art-Line Interiors (original)
/ Claudette Bonville (Refit)

Engine Information

Engines: 2

Manufacturer: MTU

Engine Type: Inboard

Fuel Type: Diesel

PHOTOS

decks-023 - copie



main salon1 - copie



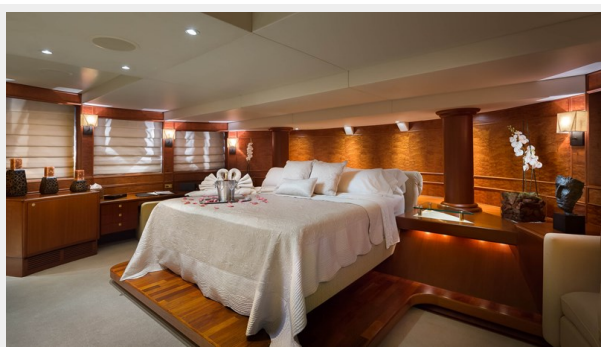
sky-bar-002 - copie



bathroom



master cabin1



master-bedroom-011



guest-rooms-double-002



guest-rooms-double-008



sky-bar-004



2023-04-13_Guy Fleury_MYSEA_Interior MY Brazil-117



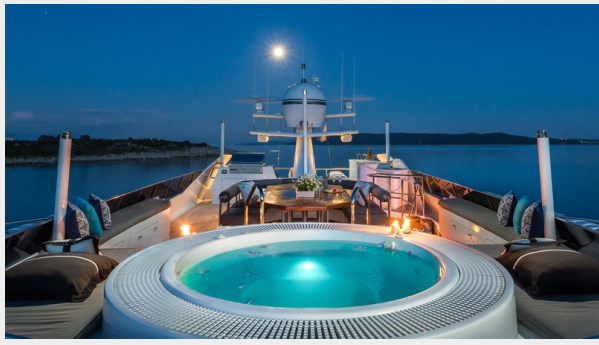
2023-04-13_Guy Fleury_MYSEA_Interior MY Brazil-261



Sun deck evening



Jacuzzi



decks-016



Aerial



Aerial



Aerial



Engine Room



Engine room



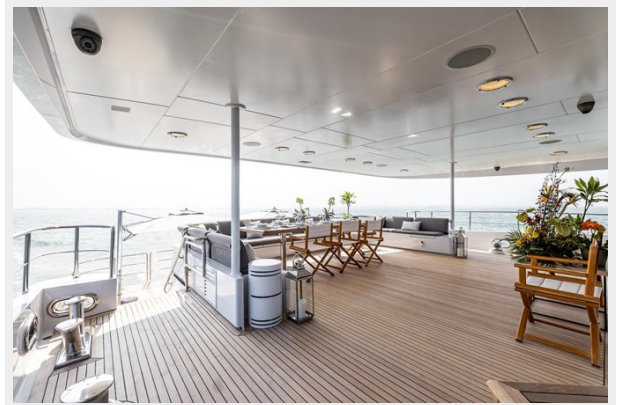
Engine room



Main deck aft dining



brazil-yacht-63



Sundeck



Sundeck



Sundeck bar



Sundeck awnings



Swim platform



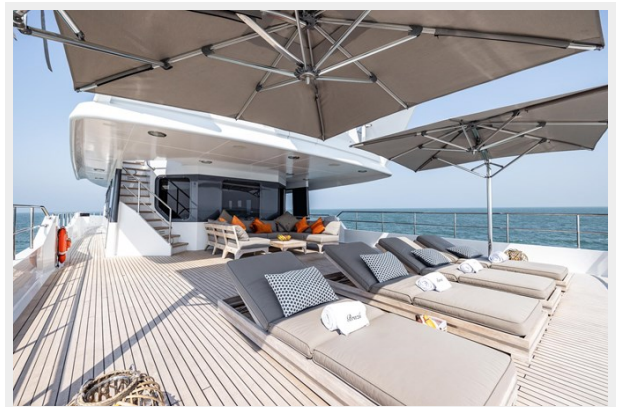
Bow



Side view



Bridge deck aft



CONTACTS

Andrey Shestakov, leading yacht broker of the sales department of Shestakov Yacht Sales Inc. Shestakov Yacht Sales Inc., the official representative of the Miami/Fort Lauderdale FL headquarters.

Contact details

Email: andrey@shestakovyachtsales.com

Web: shestakovyachtsales.com/en/

Telephones

USA: +1(954)274-4435

Office hours

Monday – Saturday: **9:00 - 21:00** EDT

Sunday: **closed**

Address



Harbour Towne Marina, 850 NE 3rd St,
STE 213, Dania, FL 33004