

## SWORDFISH — JEANNEAU



**Builder:** JEANNEAU

**Year Built:** 2018

**Model:** cruiser

**Price:** \$315,000 USD

**Location:** United States

**LOA:** 35' (10.67mm)

**Beam:** 10.41

**Min Draft:** 8' 3" (2.51mm)

**Cruise Speed:** 29 Knots Kts. (33 MPH)

**Max Speed:** 48 Knots Kts. (55 MPH)

Our experienced yacht broker, Andrey Shestakov, will help you choose and buy a yacht that best suits your needs **Swordfish — JEANNEAU** from our catalogue. Presently, at Shestakov Yacht Sales Inc., we have a wide variety of yachts available on our sale's list. We also work in close contact with all the big yacht manufacturers from all over the world.

If you would like to buy a yacht **Swordfish — JEANNEAU** or would like help answering any questions concerning purchasing, selling or chartering a yacht, please call **+1(954)274-4435**

# TABLE OF CONTENTS

TABLE OF CONTENTS	2
SPECIFICATIONS	4
Basic Information	4
Dimensions	4
Speed, Capacities and Weight	4
Accommodations	4
Hull and Deck Information	4
Engine Information	5
PHOTOS	6
Boat	6
Port Side (2)	6
Bow and anchor	6
Starboard side	6
Starboard Side (2)	7
Aft Cabin TV	7
Aft Cabin	7
Cabin - bow seating & dining area	7
Cabin controls & microwave	8
Cockpit galley & helm	8
Cockpit Galley	8
Cockpit seating & galley	8
From cabin looking to helm and outside seating	9
Cockpit seating & West Palm Beach Curtain	9
Generator 2	9
Generator	9
Head	10
Helm & electronics (2)	10
Saloon TV & DVD Player	10

---

CONTACTS	11
Contact details	11
Telephones	11
Office hours	11
Address	11

---

# SPECIFICATIONS

---

## Basic Information

---

**Category:** cruiser

**Sub Category:** Express

**Model Year:** 2018

**Year Built:** 2018

**Country:** United States

## Dimensions

---

**LOA:** 35' (10.67m)

**Beam:** 10.41

**Min Draft:** 8' 3" (2.51m)

## Speed, Capacities and Weight

---

**Cruise Speed:** 29 Knots Kts. (33 MPH)

**Max Speed:** 48 Knots Kts. (55 MPH)

**Water Capacity:** 42 Gallons

**Fuel Capacity:** 212 Gal Gallons

## Accommodations

---

**Total Cabins:** 2

**Total Berths:** 4

**Sleeps:** 6

**Total Heads:** 1

## Hull and Deck Information

---

**Hull Material:** Fiberglass

---

## Engine Information

---

**Engines:** 2

**Manufacturer:** Mercury

**Engine Type:** Outboard

**Fuel Type:** Gas

# PHOTOS

**Boat**



**Port Side (2)**



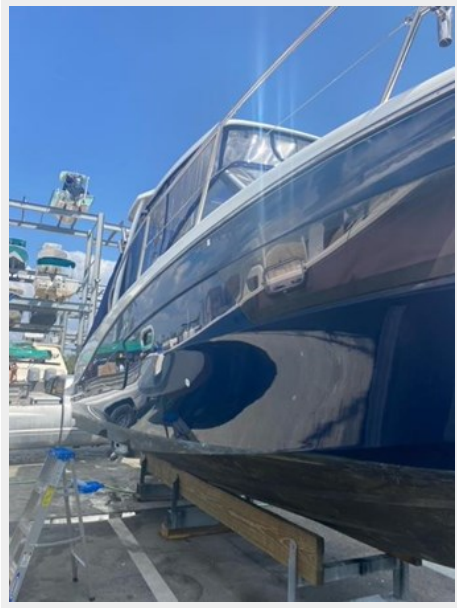
**Bow and anchor**



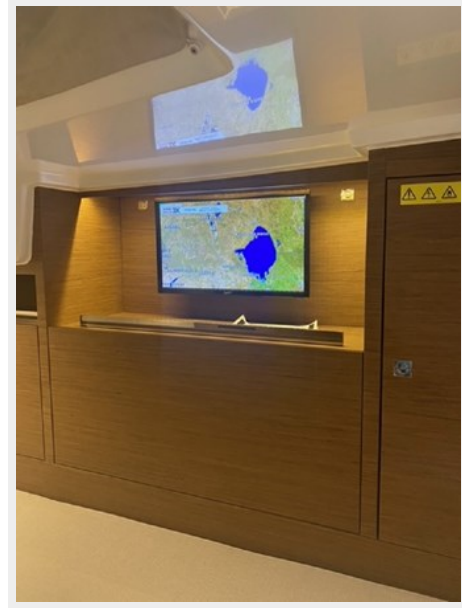
**Starboard side**



**Starboard Side (2)**



**Aft Cabin TV**



**Aft Cabin**



**Cabin - bow seating & dining area**





### Cabin controls & microwave



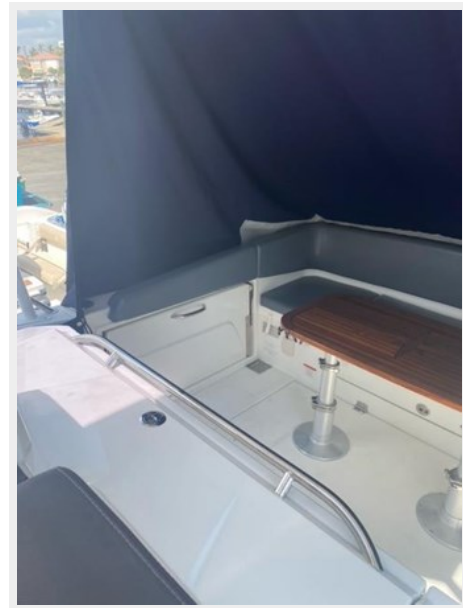
### Cockpit galley & helm



### Cockpit Galley

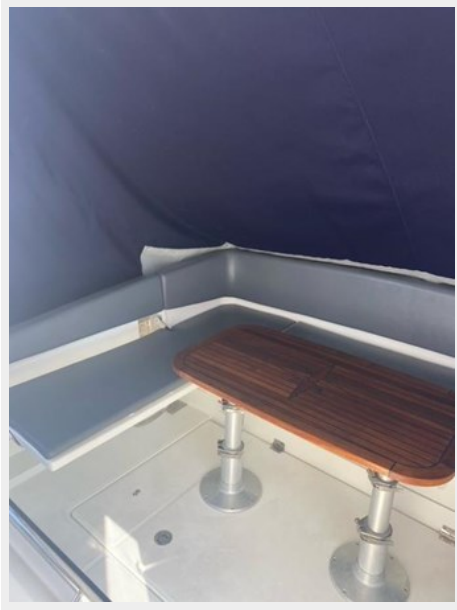


### Cockpit seating & galley





Cockpit seating & West Palm Beach Curtain



From cabin looking to helm and outside seating



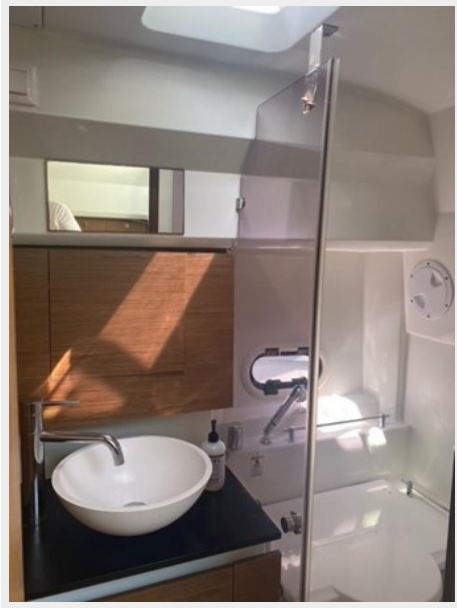
Generator 2



Generator



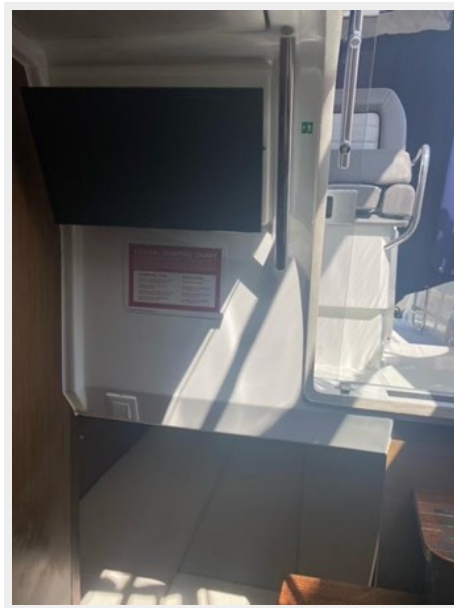
**Head**



**Helm & electronics (2)**



**Saloon TV & DVD Player**



# CONTACTS

---

Andrey Shestakov, leading yacht broker of the sales department of Shestakov Yacht Sales Inc. Shestakov Yacht Sales Inc., the official representative of the Miami/Fort Lauderdale FL headquarters.

## Contact details

---

Email: [andrey@shestakovyachtsales.com](mailto:andrey@shestakovyachtsales.com)

Web: [shestakovyachtsales.com/en/](http://shestakovyachtsales.com/en/)

## Telephones

---

USA: +1(954)274-4435

## Office hours

---

Monday – Saturday: **9:00 - 21:00** EDT

Sunday: **closed**

## Address

---



Harbour Towne Marina, 850 NE 3rd St,  
STE 213, Dania, FL 33004