

GIMLET — HUNT YACHTS



Builder: HUNT YACHTS

Year Built: 2007

Model: cruiser

Price: PRICE ON APPLICATION

Location: United States

LOA: 29' 6" (8.99mm)

Beam: 10.5

Min Draft: 1' 8" (0.51mm)

Max Draft: 3' (0.91mm)

Cruise Speed: 27 Knots Kts. (31 MPH)

Max Speed: 32 Knots Kts. (37 MPH)

Our experienced yacht broker, Andrey Shestakov, will help you choose and buy a yacht that best suits your needs **GIMLET — HUNT YACHTS** from our catalogue. Presently, at Shestakov Yacht Sales Inc., we have a wide variety of yachts available on our sale's list. We also work in close contact with all the big yacht manufacturers from all over the world.

If you would like to buy a yacht **GIMLET — HUNT YACHTS** or would like help answering any questions concerning purchasing, selling or chartering a yacht, please call **+1(954)274-4435**

TABLE OF CONTENTS

TABLE OF CONTENTS	2
SPECIFICATIONS	4
Overview	4
Basic Information	4
Dimensions	4
Speed, Capacities and Weight	4
Accommodations	4
Hull and Deck Information	5
Engine Information	5
PHOTOS	6
L-Settee and Chairs in Harbor Mode	6
L-Settee Looking Aft	6
Helm and Companion Pedestal Chairs	6
Helm	6
Port Helm Detail	7
New Garmin Flatscreen and Radar	7
Joystick and Autopilot	7
Engine Hours	7
V-Berth	8
V-Berth with Filler	8
Interior, Looking Aft	8
Ensuite Head and Shower	8
Electrical Panel	8
Galley	8
Port Quarter	9
Windshield Profile	9
Bimini with Palm Beach Extension	9
Port Cockpit Detail	9

Convertible Transom Settee	9
Transom	9
Bete Fleming Teak Staff for Ensign	10
Transom Sunbrella Cover	10
Volvo 435hp D6 Side View	10
Ultrajet 305 Controls Clean and Tidy	10
Ultrajet 305 Controls Clean and Tidy	11
Underdeck Systems Looking Forward	11
Racor Fuel Filter	11
Born to Fly!	11
CONTACTS	12
Contact details	12
Telephones	12
Office hours	12
Address	12

SPECIFICATIONS

Overview

The Hunt Surfhunter 29 is legendary for comfort and performance. She is as comfortable for a sunset cruise as she is for blasting offshore to get your hooks wet.

Basic Information

Category: cruiser

Model Year: 2007

Year Built: 2007

Country: United States

Dimensions

LOA: 29' 6" (8.99mm)

Beam: 10.5

Min Draft: 1' 8" (0.51mm)

Max Draft: 3' (0.91mm)

Speed, Capacities and Weight

Cruise Speed: 27 Knots Kts. (31 MPH)

Cruise Speed Range: 250

Max Speed: 32 Knots Kts. (37 MPH)

Gross Tonnage: 4 Pounds

Water Capacity: 45 Gallons

Holding Tank: 15 Gal Gallons

Fuel Capacity: 150 Gal Gallons

Accommodations

Total Cabins: 1

Total Berths: 2

Total Heads: 1

Hull and Deck Information

Hull Material: Fiberglass

Deck Material: Nonskid painted

Hull Color: Flag Blue

Hull Designer: C. Raymond Hunt

Engine Information

Engines: 1

Manufacturer: Volvo

Engine Type: Inboard

Fuel Type: Diesel

PHOTOS

L-Settee and Chairs in Harbor Mode



L-Settee Looking Aft



Helm and Companion Pedestal Chairs



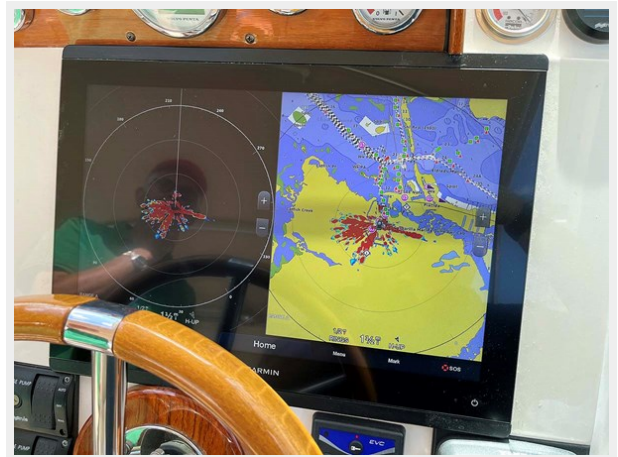
Helm



Port Helm Detail



New Garmin Flatscreen and Radar



Joystick and Autopilot



Engine Hours



V-Berth



V-Berth with Filler



Interior, Looking Aft



Ensuite Head and Shower



Electrical Panel



Galley



Port Quarter



Windshield Profile



Bimini with Palm Beach Extension



Port Cockpit Detail



Convertible Transom Settee



Transom



Transom Sunbrella Cover



Bete Fleming Teak Staff for Ensign



Volvo 435hp D6 Side View



Ultrajet 305 Controls Clean and Tidy



Ultrajet 305 Controls Clean and Tidy



Underdeck Systems Looking Forward



Racor Fuel Filter



Born to Fly!



CONTACTS

Andrey Shestakov, leading yacht broker of the sales department of Shestakov Yacht Sales Inc. Shestakov Yacht Sales Inc., the official representative of the Miami/Fort Lauderdale FL headquarters.

Contact details

Email: andrey@shestakovyachtsales.com

Web: shestakovyachtsales.com/en/

Telephones

USA: +1(954)274-4435

Office hours

Monday – Saturday: **9:00 - 21:00** EDT

Sunday: **closed**

Address



Harbour Towne Marina, 850 NE 3rd St,
STE 213, Dania, FL 33004