

WIDE OPEN — SEA RAY



Builder: SEA RAY

Year Built: 2013

Model: cruiser

Price: PRICE ON APPLICATION

Location: United States

LOA: 51' (15.54mm)

Beam: 14.66

Max Draft: 4' 2" (1.27mm)

Our experienced yacht broker, Andrey Shestakov, will help you choose and buy a yacht that best suits your needs **WIDE OPEN — SEA RAY** from our catalogue. Presently, at Shestakov Yacht Sales Inc., we have a wide variety of yachts available on our sale's list. We also work in close contact with all the big yacht manufacturers from all over the world.

If you would like to buy a yacht **WIDE OPEN — SEA RAY** or would like help answering any questions concerning purchasing, selling or chartering a yacht, please call **+1(954)274-4435**

TABLE OF CONTENTS

TABLE OF CONTENTS	2
SPECIFICATIONS	6
Basic Information	6
Dimensions	6
Speed, Capacities and Weight	6
Accommodations	6
Hull and Deck Information	6
Engine Information	7
PHOTOS	8
Port profile	8
Stbd quarter profile	8
Port quarter profile	8
Port bow profile	8
Bow profile	8
Cockpit	8
Upper salon	9
Galley/lower salon	9
VIP stateroom	9
Stern profile	9
Cockpit	9
Port cockpit	9
Cockpit table	10
Stbd cockpit	10
Cockpit with the sunshade	10
Sunshade	10
Stbd profile	10
Upper salon looking aft	10
Port upper salon	11

Stbd upper salon	11
Stbd upper salon storage	11
Isotherm refrigerator	11
Helm station	11
Helm station	11
Helm seat	12
Helm dashboard	12
Control station	12
Yacht Controller	12
Port profile	12
Lower salon	12
033	13
Galley	13
Galley	13
Kenyon cooktop	13
Cuisinart convection microwave oven and grill	13
Entertainment center in the galley/salon area	13
Main distribution panel	14
Master stateroom	14
Master head/shower	14
Entertainment center in the master stateroom	14
Master shower	14
Master vanity	14
Master vanity sink	15
VIP stateroom	15
TV in the VIP stateroom	15
Storage in the VIP stateroom	15
Guest shower/vanity	15
Guest vanity	15

Port quarter profile	16
Bow area	16
Bow speakers	16
Stbd quarter profile	16
Stbd profile	16
Engine room	16
Engine room	17
Engine room	17
Main DC breaker panel	17
Generator	17
SmartCraft DTS control	17
Port profile	17
Vetus thruster control	18
Port profile	18
Switch panel	18
FLIR control	18
Port quarter profile	18
Cup holder at the helm	18
Electronics at the helm	19
Stbd profile	19
Port profile	19
Stbd quarter profile	19
Port quarter profile	19
Aerial view	19
Stbd bow profile	20
Port bow profile	20
510 Sundancer underway	20
CONTACTS	21
Contact details	21

Telephones	21
Office hours	21
Address	21

SPECIFICATIONS

Basic Information

Category: cruiser

Sub Category: Cabin Cruiser

Model Year: 2013

Year Built: 2013

Country: United States

Dimensions

LOA: 51' (15.54mm)

Beam: 14.66

Max Draft: 4' 2" (1.27mm)

Speed, Capacities and Weight

Water Capacity: 110 Gallons

Holding Tank: 68 Gal Gallons

Fuel Capacity: 404 Gal Gallons

Accommodations

Total Cabins: 2

Total Berths: 3

Sleeps: 6

Total Heads: 2

Hull and Deck Information

Hull Material: Fiberglass

Hull Configuration: Deep Vee

Hull Color: White

Engine Information

Engines: 2

Manufacturer: Cummins

Engine Type: Inboard

Fuel Type: Diesel

PHOTOS

Port profile



Stbd quarter profile



Port quarter profile



Port bow profile



Bow profile



Cockpit



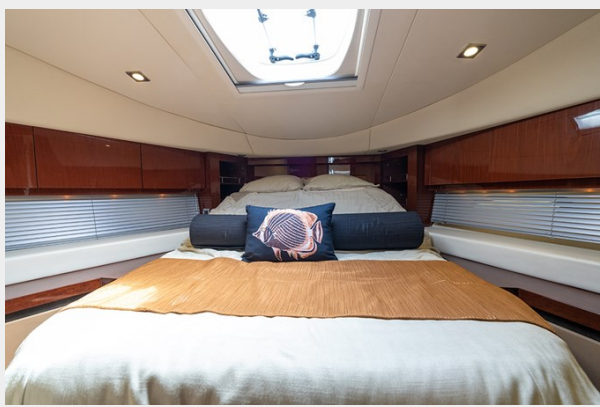
Upper salon



Galley/lower salon



VIP stateroom



Stern profile



Cockpit



Port cockpit



Cockpit table



Stbd cockpit



Cockpit with the sunshade



Sunshade



Stbd profile



Upper salon looking aft



Port upper salon



Stbd upper salon



Stbd upper salon storage



Isotherm refrigerator



Helm station



Helm station



Helm seat



Helm dashboard



Control station



Yacht Controller



Port profile



Lower salon



033



Galley



Galley



Kenyon cooktop



Cuisinart convection microwave oven and grill



Entertainment center in the galley/salon area



Main distribution panel



Master stateroom



Entertainment center in the master stateroom



Master head/shower



Master shower



Master vanity



Master vanity sink



VIP stateroom



TV in the VIP stateroom



Storage in the VIP stateroom



Guest shower/vanity



Guest vanity



Port quarter profile



Bow area



Bow speakers



Stbd quarter profile



Stbd profile



Engine room



Engine room



Engine room



Main DC breaker panel



Generator



Port profile



SmartCraft DTS control



Vetus thruster control



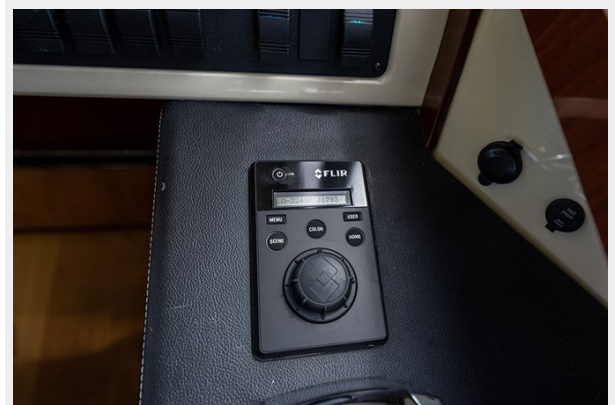
Port profile



Switch panel



FLIR control



Port quarter profile



Cup holder at the helm



Electronics at the helm



Stbd profile



Port profile



Stbd quarter profile



Port quarter profile



Aerial view



Stbd bow profile



Port bow profile



510 Sundancer underway



CONTACTS

Andrey Shestakov, leading yacht broker of the sales department of Shestakov Yacht Sales Inc. Shestakov Yacht Sales Inc., the official representative of the Miami/Fort Lauderdale FL headquarters.

Contact details

Email: andrey@shestakovyachtsales.com

Web: shestakovyachtsales.com/en/

Telephones

USA: +1(954)274-4435

Office hours

Monday – Saturday: **9:00 - 21:00** EDT

Sunday: **closed**

Address



Harbour Towne Marina, 850 NE 3rd St,
STE 213, Dania, FL 33004