

## SNOWBIRD — HAKVOORT



**Builder:** HAKVOORT

**Year Built:** 2010

**Model:** Tri-Deck

**Price:** PRICE ON APPLICATION

**Location:** United States

**LOA:** 128' (39.01mm)

**Beam:** 26.25

**Max Draft:** 8' (2.44mm)

**Cruise Speed:** 10.5 Knots Kts. (12 MPH)

**Max Speed:** 12 Knots Kts. (14 MPH)

Our experienced yacht broker, Andrey Shestakov, will help you choose and buy a yacht that best suits your needs **SNOWBIRD — HAKVOORT** from our catalogue. Presently, at Shestakov Yacht Sales Inc., we have a wide variety of yachts available on our sale's list. We also work in close contact with all the big yacht manufacturers from all over the world.

If you would like to buy a yacht **SNOWBIRD — HAKVOORT** or would like help answering any questions concerning purchasing, selling or chartering a yacht, please call **+1(954)274-4435**

# TABLE OF CONTENTS

TABLE OF CONTENTS	2
SPECIFICATIONS	4
Overview	4
Basic Information	4
Dimensions	4
Speed, Capacities and Weight	5
Accommodations	5
Hull and Deck Information	5
Engine Information	5
PHOTOS	6
SNOWBIRD 128'/39m Hakvoort Tri-Deck Motor Yacht 2010/2020	6
SNOWBIRD 128'/39m Hakvoort Tri-Deck Motor Yacht 2010/2020	6
SNOWBIRD 128'/39m Hakvoort Tri-Deck Motor Yacht 2010/2020	6
SNOWBIRD 128'/39m Hakvoort Tri-Deck Motor Yacht 2010/2020 - Foredeck	6
SNOWBIRD 128'/39m Hakvoort Tri-Deck Motor Yacht 2010/2020 - Aerial Jacuzzi	6
SNOWBIRD 128'/39m Hakvoort Tri-Deck Motor Yacht 2010/2020 - Aerial Jacuzzi	6
SNOWBIRD 128'/39m Hakvoort Tri-Deck Motor Yacht 2010/2020 - Jacuzzi with Sundeck Seating	7
SNOWBIRD_WEB-43	7
SNOWBIRD 128'/39m Hakvoort Tri-Deck Motor Yacht 2010/2020 - Jacuzzi with Sundeck Seating	7
SNOWBIRD 128'/39m Hakvoort Tri-Deck Motor Yacht 2010/2020 - Bridge Deck Aft Dining	7
SNOWBIRD 128'/39m Hakvoort Tri-Deck Motor Yacht 2010/2020 - Bridge Lobby	7
SNOWBIRD 128'/39m Hakvoort Tri-Deck Motor Yacht 2010/2020 - Wheelhouse	7
SNOWBIRD 128'/39m Hakvoort Tri-Deck Motor Yacht 2010/2020 - Main Deck Lobby	8
SNOWBIRD 128'/39m Hakvoort Tri-Deck Motor Yacht 2010/2020 - Main Deck Aft	8
SNOWBIRD 128'/39m Hakvoort Tri-Deck Motor Yacht 2010/2020 - Main Deck Aft	8
SNOWBIRD 128'/39m Hakvoort Tri-Deck Motor Yacht 2010/2020 - Main Deck Aft	8

SNOWBIRD 128'/39m Hakvoort Tri-Deck Motor Yacht 2010/2020 - Main Salon Dining Area	8
SNOWBIRD 128'/39m Hakvoort Tri-Deck Motor Yacht 2010/2020 - Main Salon	8
SNOWBIRD 128'/39m Hakvoort Tri-Deck Motor Yacht 2010/2020 - Private Master Office	9
SNOWBIRD 128'/39m Hakvoort Tri-Deck Motor Yacht 2010/2020 - Master Stateroom	9
SNOWBIRD 128'/39m Hakvoort Tri-Deck Motor Yacht 2010/2020 - Master Stateroom	9
SNOWBIRD 128'/39m Hakvoort Tri-Deck Motor Yacht 2010/2020 - Master Stateroom	9
SNOWBIRD 128'/39m Hakvoort Tri-Deck Motor Yacht 2010/2020 - Lower Deck Guest Lobby	9
SNOWBIRD 128'/39m Hakvoort Tri-Deck Motor Yacht 2010/2020 - Master Ensuite	9
SNOWBIRD 128'/39m Hakvoort Tri-Deck Motor Yacht 2010/2020 - (1) VIP Ensuite	10
SNOWBIRD 128'/39m Hakvoort Tri-Deck Motor Yacht 2010/2020 - (2) VIP Ensuite	10
SNOWBIRD 128'/39m Hakvoort Tri-Deck Motor Yacht 2010/2020 - (3) Twin Ensuite, Convertible	10
SNOWBIRD 128'/39m Hakvoort Tri-Deck Motor Yacht 2010/2020 - (4) Twin Ensuite, Convertible	10
CONTACTS	11
Contact details	11
Telephones	11
Office hours	11
Address	11

---

# SPECIFICATIONS

---

## Overview

---

SNOWBIRD 128'/39m Hakvoort Tri-Deck Motor Yacht 2010/2020; Refreshed, Pedigree Yacht with Stylish Interior and in Turnkey Condition

### Key Features:

- Transatlantic Range
- Turnkey Condition
- 5 staterooms that Sleeps up to 10 Guests; can be all KINGS!
- Two VIP Staterooms
- Full Beam on Deck Master Ensuite with Private Office
- Interior Done & Refreshed by David Ostrander
- Distinguished Art Collection
- At Anchor Stabilizers
- Established Charter Program
- Jacuzzi with Rain Shower on Sundeck
- Lloyd's Class

## Basic Information

---

**Category:** Tri-Deck

**Sub Category:** Tri-Deck

**Model Year:** 2010

**Year Built:** 2010

**Refit Type:** Extensive

**Country:** United States

## Dimensions

---

**LOA:** 128' (39.01mm)

**Beam:** 26.25

**Max Draft:** 8' (2.44mm)

---

## Speed, Capacities and Weight

---

**Cruise Speed:** 10.5 Knots Kts. (12 MPH)

**Cruise Speed Range:** 3800

**Max Speed:** 12 Knots Kts. (14 MPH)

**Max Speed Range:** 1800 Kts.

**Gross Tonnage:** 368 Pounds

**Water Capacity:** 2642 Gallons

**Fuel Capacity:** 11888 Gal Gallons

**Fuel Consumption:** 40 Gal Gallons

---

## Accommodations

---

**Total Cabins:** 5

**Sleeps:** 10

**Crew Cabin:** 8

---

## Hull and Deck Information

---

**Hull Material:** Steel

**Deck Material:** Teak

**Hull Configuration:** Full Displacement

**Hull Designer:** Azure Yacht Design & Naval Architecture

**Exterior Designer:** Cor D. Rover Design

**Interior Designer:** David Ostrander

---

## Engine Information

---

**Engines:** 2

**Manufacturer:** Caterpillar

**Engine Type:** Inboard

**Fuel Type:** Diesel

# PHOTOS

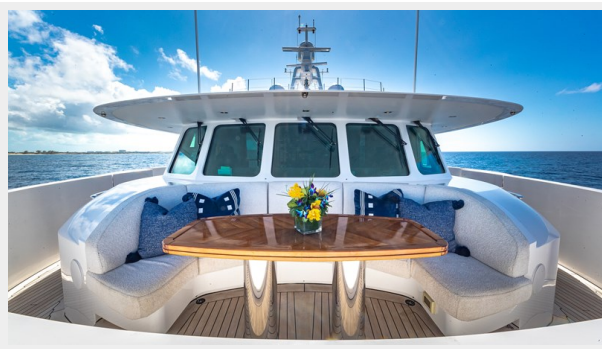
**SNOWBIRD 128'/39m Hakvoort Tri-Deck  
Motor Yacht 2010/2020**



**SNOWBIRD 128'/39m Hakvoort Tri-Deck  
Motor Yacht 2010/2020**



**SNOWBIRD 128'/39m Hakvoort Tri-Deck  
Motor Yacht 2010/2020**



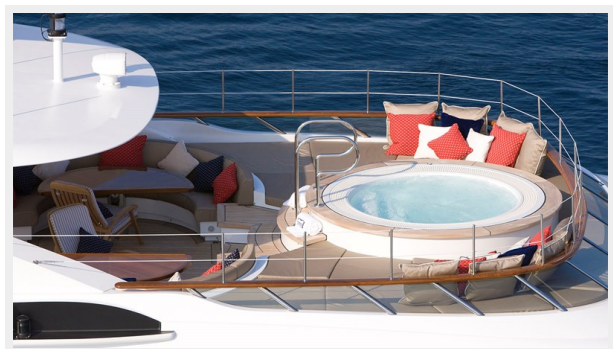
**SNOWBIRD 128'/39m Hakvoort Tri-Deck  
Motor Yacht 2010/2020 - Foredeck**



**SNOWBIRD 128'/39m Hakvoort Tri-Deck  
Motor Yacht 2010/2020 - Aerial Jacuzzi**



**SNOWBIRD 128'/39m Hakvoort Tri-Deck  
Motor Yacht 2010/2020 - Aerial Jacuzzi**



**SNOWBIRD\_WEB-43**



**SNOWBIRD 128'/39m Hakvoort Tri-Deck Motor Yacht 2010/2020 - Jacuzzi with Sundeck Seating**



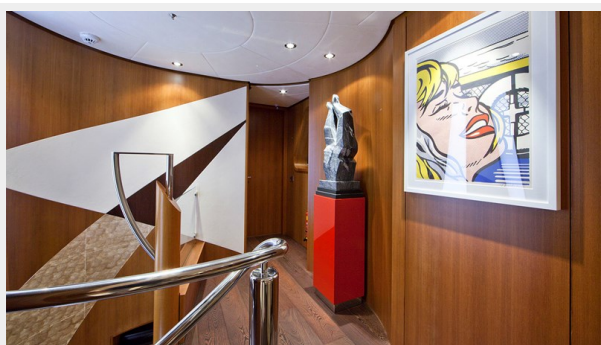
**SNOWBIRD 128'/39m Hakvoort Tri-Deck Motor Yacht 2010/2020 - Jacuzzi with Sundeck Seating**



**SNOWBIRD 128'/39m Hakvoort Tri-Deck Motor Yacht 2010/2020 - Bridge Deck Aft Dining**



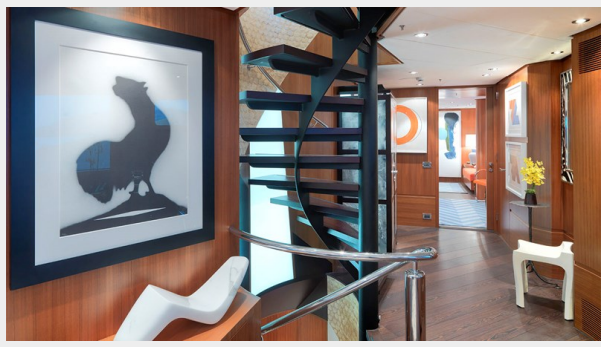
**SNOWBIRD 128'/39m Hakvoort Tri-Deck Motor Yacht 2010/2020 - Bridge Lobby**



**SNOWBIRD 128'/39m Hakvoort Tri-Deck Motor Yacht 2010/2020 - Wheelhouse**



**SNOWBIRD 128'/39m Hakvoort Tri-Deck Motor Yacht 2010/2020 - Main Deck Lobby**



**SNOWBIRD 128'/39m Hakvoort Tri-Deck Motor Yacht 2010/2020 - Main Deck Aft**



**SNOWBIRD 128'/39m Hakvoort Tri-Deck Motor Yacht 2010/2020 - Main Deck Aft**



**SNOWBIRD 128'/39m Hakvoort Tri-Deck Motor Yacht 2010/2020 - Main Deck Aft**



**SNOWBIRD 128'/39m Hakvoort Tri-Deck Motor Yacht 2010/2020 - Main Salon**



**SNOWBIRD 128'/39m Hakvoort Tri-Deck Motor Yacht 2010/2020 - Main Salon Dining Area**





**SNOWBIRD 128'/39m Hakvoort Tri-Deck  
Motor Yacht 2010/2020 - Private Master  
Office**



**SNOWBIRD 128'/39m Hakvoort Tri-Deck  
Motor Yacht 2010/2020 - Master Stateroom**



**SNOWBIRD 128'/39m Hakvoort Tri-Deck  
Motor Yacht 2010/2020 - Master Stateroom**



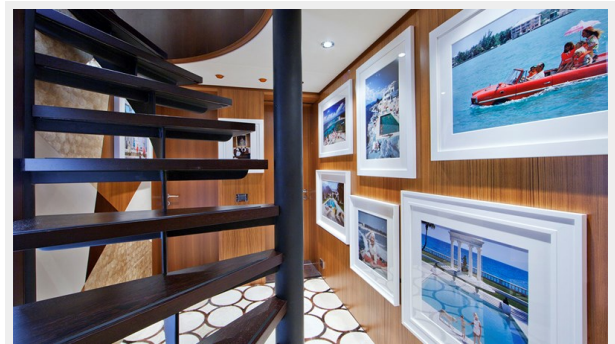
**SNOWBIRD 128'/39m Hakvoort Tri-Deck  
Motor Yacht 2010/2020 - Master Stateroom**



**SNOWBIRD 128'/39m Hakvoort Tri-Deck  
Motor Yacht 2010/2020 - Master Ensuite**



**SNOWBIRD 128'/39m Hakvoort Tri-Deck  
Motor Yacht 2010/2020 - Lower Deck Guest  
Lobby**



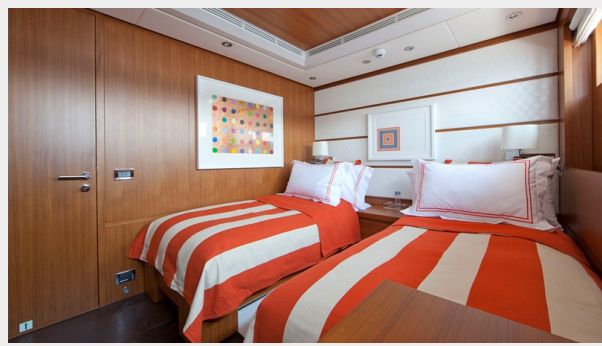
**SNOWBIRD 128'/39m Hakvoort Tri-Deck  
Motor Yacht 2010/2020 - (1) VIP Ensuite**



**SNOWBIRD 128'/39m Hakvoort Tri-Deck  
Motor Yacht 2010/2020 - (2) VIP Ensuite**



**SNOWBIRD 128'/39m Hakvoort Tri-Deck  
Motor Yacht 2010/2020 - (3) Twin Ensuite,  
Convertible**



**SNOWBIRD 128'/39m Hakvoort Tri-Deck  
Motor Yacht 2010/2020 - (4) Twin Ensuite,  
Convertible**



# CONTACTS

---

Andrey Shestakov, leading yacht broker of the sales department of Shestakov Yacht Sales Inc. Shestakov Yacht Sales Inc., the official representative of the Miami/Fort Lauderdale FL headquarters.

## Contact details

---

Email: [andrey@shestakovyachtsales.com](mailto:andrey@shestakovyachtsales.com)

Web: [shestakovyachtsales.com/en/](http://shestakovyachtsales.com/en/)

## Telephones

---

USA: +1(954)274-4435

## Office hours

---

Monday – Saturday: **9:00 - 21:00** EDT

Sunday: **closed**

## Address

---



Harbour Towne Marina, 850 NE 3rd St,  
STE 213, Dania, FL 33004