

## ICE COLD POP — PRINCESS VIKING



**Builder:** PRINCESS VIKING

**Year Built:** 2014

**Model:** cruiser

**Price:** PRICE ON APPLICATION

**Location:** United States

**LOA:** 52' (15.85mm)

**Beam:** 14.58

**Min Draft:** 4' (1.22mm)

**Max Draft:** 3' 9" (1.14mm)

**Cruise Speed:** 28 Knots Kts. (32 MPH)

Our experienced yacht broker, Andrey Shestakov, will help you choose and buy a yacht that best suits your needs **Ice Cold Pop — PRINCESS VIKING** from our catalogue. Presently, at Shestakov Yacht Sales Inc., we have a wide variety of yachts available on our sale's list. We also work in close contact with all the big yacht manufacturers from all over the world.

If you would like to buy a yacht **Ice Cold Pop — PRINCESS VIKING** or would like help answering any questions concerning purchasing, selling or chartering a yacht, please call **+1(954)274-4435**

---

# TABLE OF CONTENTS

---

TABLE OF CONTENTS	2
SPECIFICATIONS	3
Overview	3
Basic Information	3
Dimensions	3
Speed, Capacities and Weight	3
Accommodations	3
Hull and Deck Information	4
Engine Information	4
PHOTOS	5
CONTACTS	9
Contact details	9
Telephones	9
Office hours	9
Address	9

---

# SPECIFICATIONS

---

## Overview

---

This Viking Princess was built to US Specification and has been continuously updated by her knowledgeable owners. You will find this Princess with shaft drive in immaculate condition, fully serviced and cruise ready. Powered by low hour, dependable C-12 Caterpillars, **Ice Cold Pop** is a rare find with traditional shafts (no pods). Stored in a climate controlled building throughout the COVID pandemic, **Ice Cold Pop** is ready to roll. If you are looking for trouble free operation with easy maintenance shaft drive this Cat powered 52 Viking Princess is the choice.

## Basic Information

---

**Category:** cruiser

**Sub Category:** Express

**Model Year:** 2014

**Year Built:** 2014

**Country:** United States

## Dimensions

---

**LOA:** 52' (15.85mm)

**Beam:** 14.58

**Min Draft:** 4' (1.22mm)

**Max Draft:** 3' 9" (1.14mm)

## Speed, Capacities and Weight

---

**Cruise Speed:** 28 Knots Kts. (32 MPH)

**Water Capacity:** 80 Gallons

**Holding Tank:** 42 Gal Gallons

**Fuel Capacity:** 440 Gal Gallons

## Accommodations

---

**Total Cabins:** 2

**Total Heads:** 2

---

## Hull and Deck Information

---

**Hull Material:** Fiberglass

## Engine Information

---

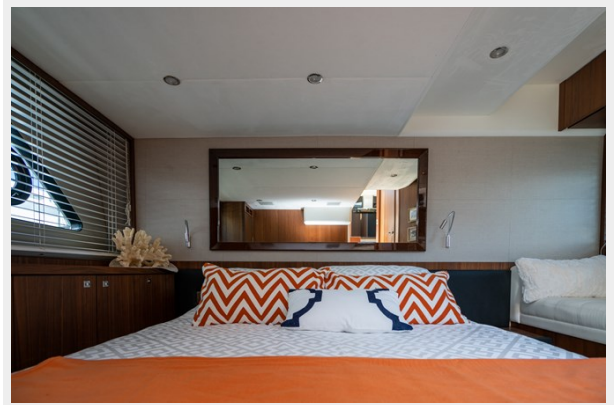
**Engines:** 2

**Manufacturer:** Caterpillar

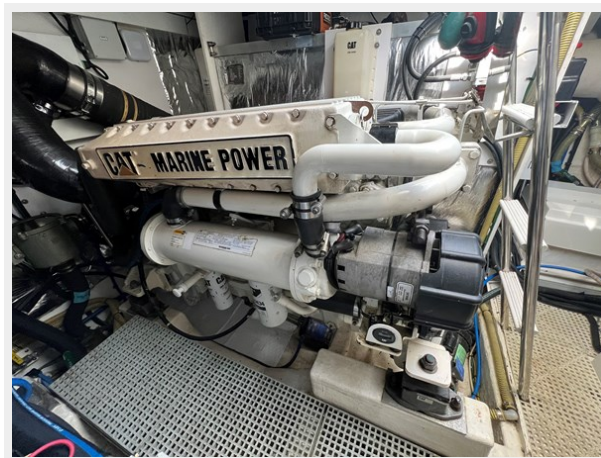
**Fuel Type:** Diesel

# PHOTOS











# CONTACTS

---

Andrey Shestakov, leading yacht broker of the sales department of Shestakov Yacht Sales Inc. Shestakov Yacht Sales Inc., the official representative of the Miami/Fort Lauderdale FL headquarters.

## Contact details

---

Email: [andrey@shestakovyachtsales.com](mailto:andrey@shestakovyachtsales.com)

Web: [shestakovyachtsales.com/en/](http://shestakovyachtsales.com/en/)

## Telephones

---

USA: +1(954)274-4435

## Office hours

---

Monday – Saturday: **9:00 - 21:00** EDT

Sunday: **closed**

## Address

---



Harbour Towne Marina, 850 NE 3rd St,  
STE 213, Dania, FL 33004