

SLX 270 — SEA RAY



Builder: [SEA RAY](#)

Year Built: 2008

Model: Bow Rider

Price: PRICE ON APPLICATION

Location: United States

LOA: 28' 6" (8.69mm)

Beam: 9

Max Draft: 3' (0.91mm)

Our experienced yacht broker, Andrey Shestakov, will help you choose and buy a yacht that best suits your needs **SLX 270 — SEA RAY** from our catalogue. Presently, at Shestakov Yacht Sales Inc., we have a wide variety of yachts available on our sale's list. We also work in close contact with all the big yacht manufacturers from all over the world.

If you would like to buy a yacht **SLX 270 — SEA RAY** or would like help answering any questions concerning purchasing, selling or chartering a yacht, please call **+1(954)274-4435**

TABLE OF CONTENTS

TABLE OF CONTENTS	2
SPECIFICATIONS	5
Overview	5
Basic Information	5
Dimensions	5
Speed, Capacities and Weight	5
Accommodations	5
Hull and Deck Information	6
Engine Information	6
PHOTOS	7
2	7
3	7
4	7
5	7
6	7
7	7
8	8
9	8
10	8
11	8
12	8
13	8
14	9
15	9
16	9
17	9
18	9
19	9

20	10
21	10
22	10
23	10
24	10
25	10
26	11
27	11
28	11
29	11
30	11
31	11
32	12
33	12
34	12
35	12
36	12
37	12
38	13
39	13
40	13
41	13
42	13
43	13
44	14
45	14
46	14
47	14
48	14

49	14
50	15
CONTACTS	16
Contact details	16
Telephones	16
Office hours	16
Address	16

SPECIFICATIONS

Overview

New to the market! Well kept Sea Ray SLX 270. This is a one owner, low hour, dry stacked bow rider powered with the desirable Mercruiser 496 engine mated to a Bravo III outdrive. This one will provide a family with a comfortable ride and some quality time on the water this summer. She features a Bimini top attached to an arch and is complete with a roomy head compartment. Call today and be on the water this weekend! Dry slip is available to rent in Mt. Pleasant at Shem Creek Drystack Marina.

Basic Information

Category: Bow Rider

Sub Category: Bow Rider

Model Year: 2008

Year Built: 2008

Country: United States

Dimensions

LOA: 28' 6" (8.69mm)

Beam: 9

Max Draft: 3' (0.91mm)

Speed, Capacities and Weight

Fuel Capacity: 91 Gal Gallons

Accommodations

Total Heads: 1

Hull and Deck Information

Hull Material: Fiberglass

Engine Information

Engines: 1

Manufacturer: Mercruiser

Engine Type: I/O

Fuel Type: Gas/Petrol

PHOTOS

2



3



4



5



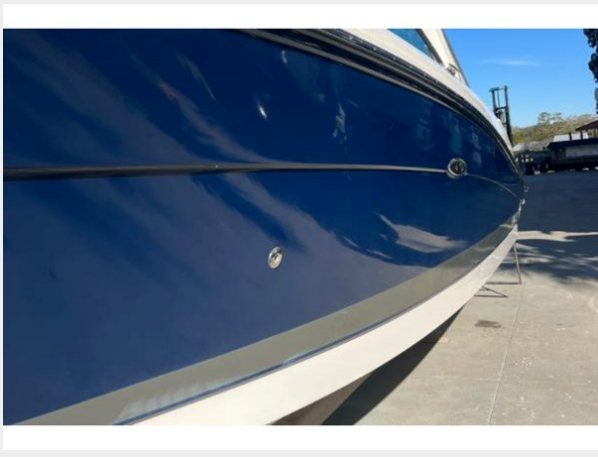
6



7



8



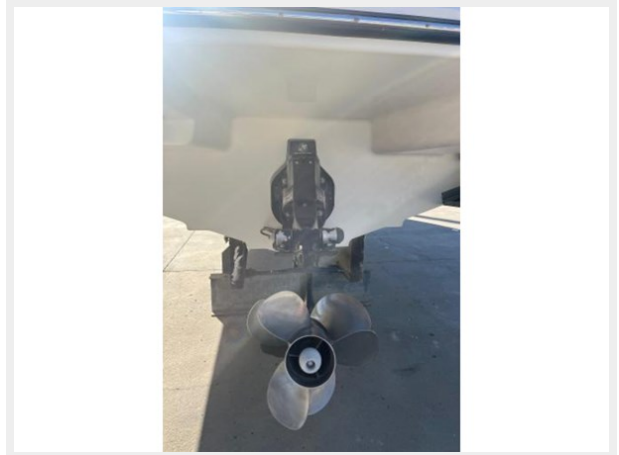
9



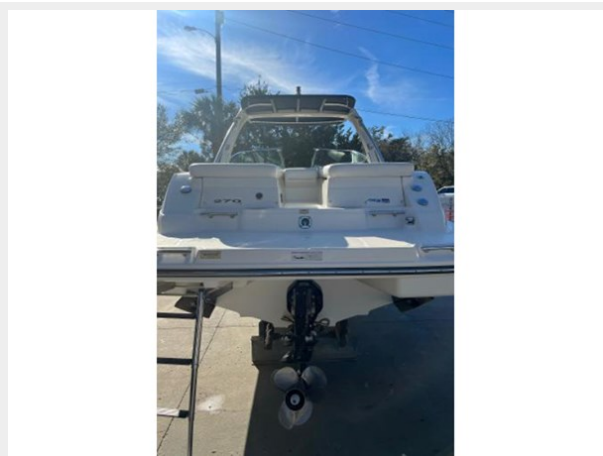
10



11



12



13



14



15



16



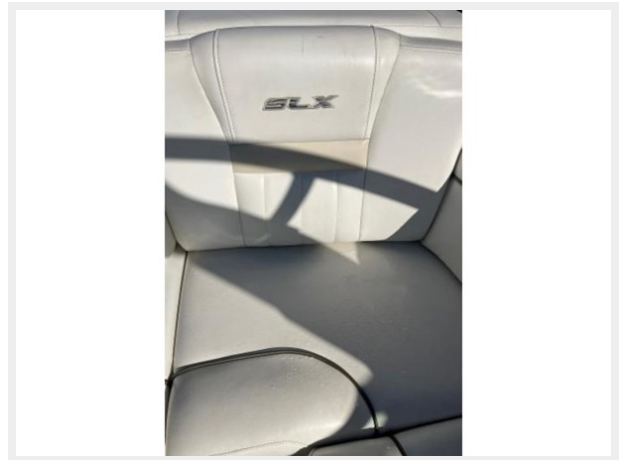
17



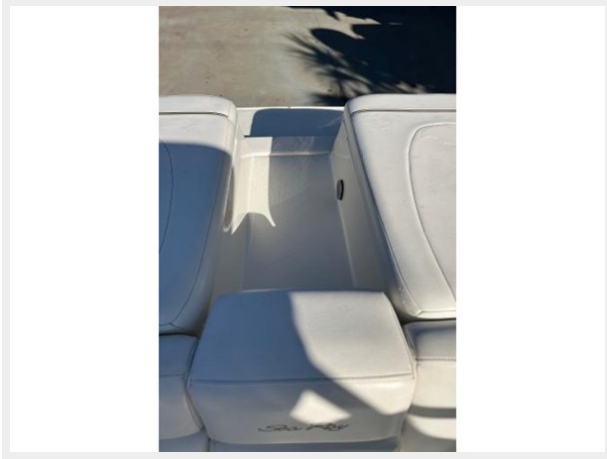
18



19



20



21



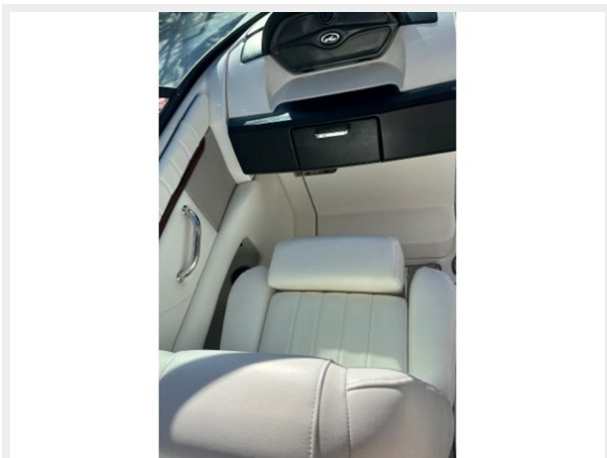
22



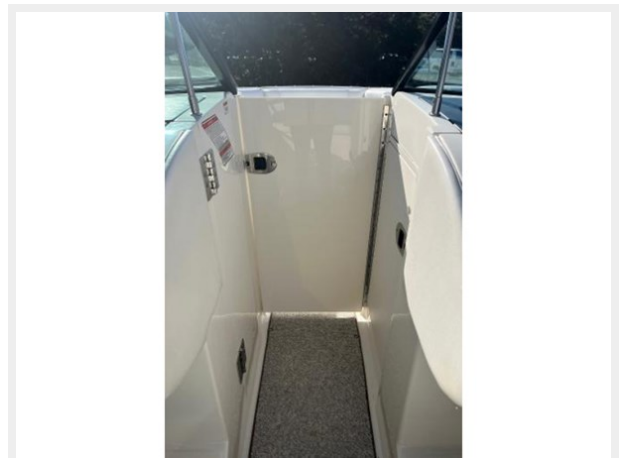
23



24



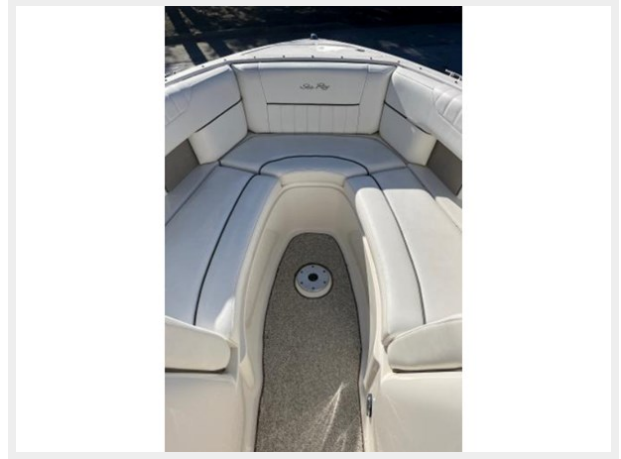
25



26



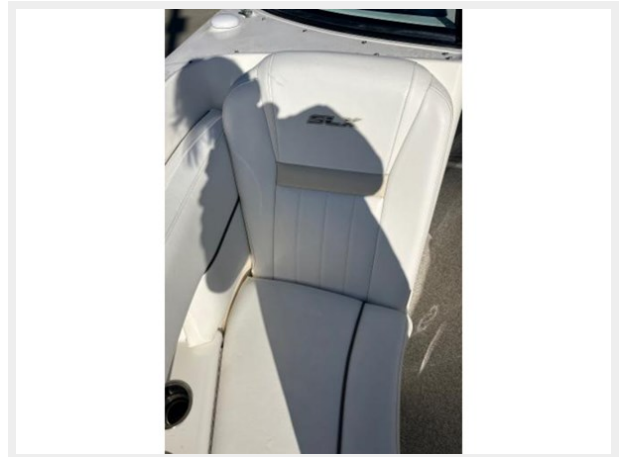
27



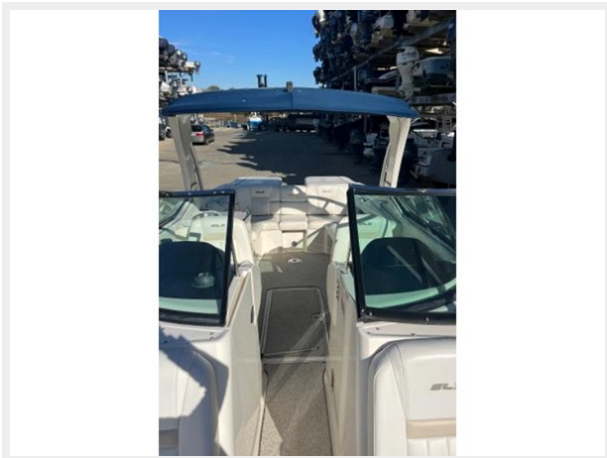
28



29



30



31



32



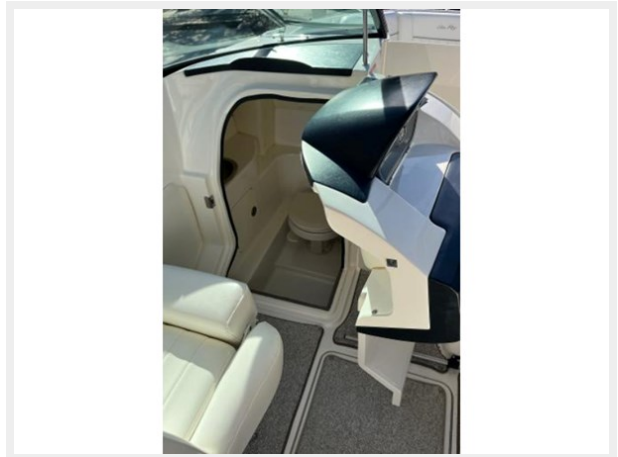
33



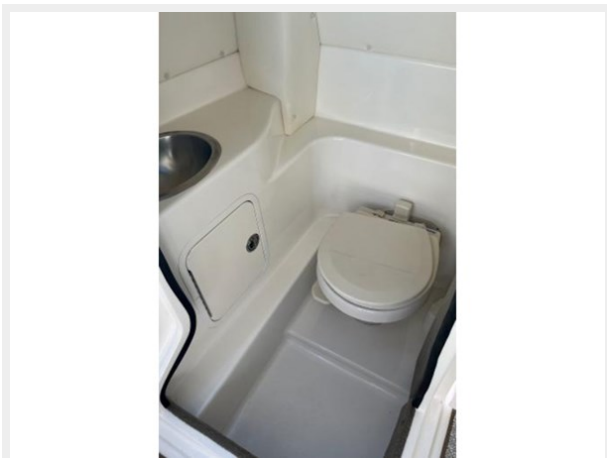
34



35



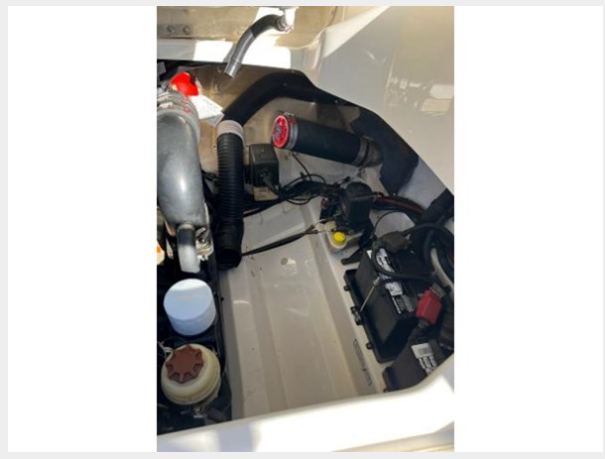
36



37



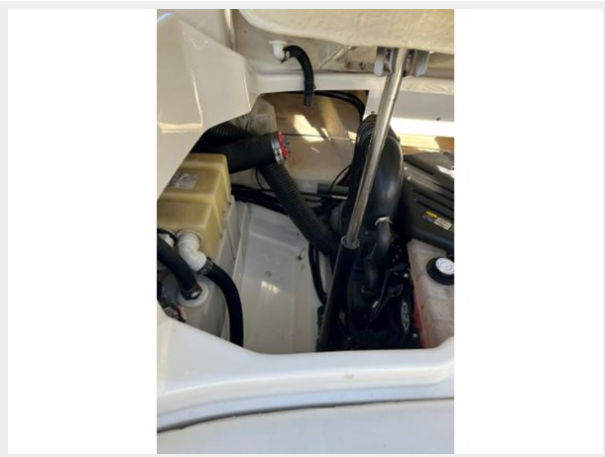
38



39



40



41



42



43



44



45



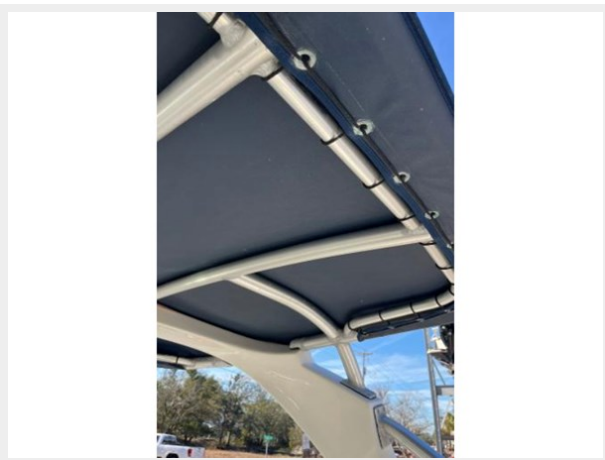
46



47



48



49



50



CONTACTS

Andrey Shestakov, leading yacht broker of the sales department of Shestakov Yacht Sales Inc. Shestakov Yacht Sales Inc., the official representative of the Miami/Fort Lauderdale FL headquarters.

Contact details

Email: andrey@shestakovyachtsales.com

Web: shestakovyachtsales.com/en/

Telephones

USA: +1(954)274-4435

Office hours

Monday – Saturday: **9:00 - 21:00** EDT

Sunday: **closed**

Address



Harbour Towne Marina, 850 NE 3rd St,
STE 213, Dania, FL 33004