

## WASSAILING — GRAND BANKS



**Builder:** GRAND BANKS

**Year Built:** 1994

**Model:** trawler

**Price:** \$254,000 USD

**Location:** United States

**LOA:** 46' (14.02mm)

**Beam:** 14.75

**Min Draft:** 4' 6" (1.37mm)

**Cruise Speed:** 14 Knots Kts. (16 MPH)

**Max Speed:** 18 Knots Kts. (21 MPH)

Our experienced yacht broker, Andrey Shestakov, will help you choose and buy a yacht that best suits your needs **WASSAILING — GRAND BANKS** from our catalogue. Presently, at Shestakov Yacht Sales Inc., we have a wide variety of yachts available on our sale's list. We also work in close contact with all the big yacht manufacturers from all over the world.

If you would like to buy a yacht **WASSAILING — GRAND BANKS** or would like help answering any questions concerning purchasing, selling or chartering a yacht, please call **+1(954)274-4435**

# TABLE OF CONTENTS

---

TABLE OF CONTENTS	2
SPECIFICATIONS	6
Overview	6
Basic Information	6
Dimensions	6
Speed, Capacities and Weight	7
Accommodations	7
Hull and Deck Information	7
Engine Information	7
PHOTOS	8
Dockside-Fresh Varnished Transom	8
UMT Davit and Novourania RIB	8
Flybridge with Double Thick Cushions and Arch Mounted Daylight TV	9
Flybridge Helm	9
Flybridge with Enclosure	9
Llebroc Helm and Companion Chairs	9
Flybridge Dinette	9
Galley with Granite Countertops	9
Ultraleather Salon Settee with Storage Beneath	10
Lower Helm	10
Naiad Stabilizers, Radios and Helm Accessories	10
Expanding Teak Hi-Lo Table	10
Salon Flat Panel TV	10
Refrigerator and Stovetop	10
Icemaker/Refrigerator	11
Microwave and Trash Compactor	11
Aft Master Stateroom	11
Master Head Portside	11

Solid Surface Countertop	11
Separate Shower Closet to Starboard Side	11
Walkaround Queen Berth with LED Reading Lights	12
Desk-Dresser to Portside	12
Portside Dresser Drawers	12
Starboard Side Dresser Drawers	12
Master Stateroom TV and Salon Door Closed	12
Hull 163 Emblem	12
Main Electrical Breaker-Switching Panel	13
Portside Pantry Area	13
Freezer in Pantry	13
Pantry Cabinets and Shelves	13
Forward Pantry Cabinet and Shelves	13
Manual Reference Storage	13
LG Combo Washer/Dryer in Laundry Area-Starboard	14
Laundry Area Counter	14
Forward Stateroom-Starboard Side Teak Cladding	14
Forward Guest Stateroom Berth	14
Forward Stateroom TV and Hanging Locker	14
DVD Player, Closet, and AC Thermostat	14
Guest Head-Forward to Starboard	15
Guest Shower Stall	15
Looking Aft from Guest Stateroom	15
Storage Area Accessed with Steps Raised	15
Flybridge Helm Accessories	15
Flo-Scans and VHF Radios on Flybridge	15
Flybridge Helm	16
Flybridge Electronics	16
Underside of Flybridge Arch with LED Lighting	16

TracVision SAT TV Antenna	16
Flybridge Enclosure, Spotlight, and Windscreen	16
Antenna Mast, Spreader Lights, and Camera	16
Hinged Mast	17
Foredeck Cushions	17
Nameboards	17
Bow	17
Pulpit with Two Mounted Anchors and Windlass	17
Upgraded Stainless Safety Rails	17
Tender and Storage Box on Trunk Cabin	18
Honda 4-Stroke Outboard	18
Aft Control for Glendinning Cablemaster, TV Phone Inlet Plugs, Freshwater Shower	18
Overhead Dropdown Hatch to Engine Room	18
Under Stairway Entrance to Engine Room	18
Twin 3208TA CAT Diesels	18
375HP CAT's Fully Serviced	19
View to Front of Engine Room	19
Newer Exhaust Blankets	19
Forward Starboard Engine Room	19
GB Wiring Cabinet	19
Inverter-Portside	19
Fresh Bottom Job	20
Northern Light Generator in Sound Shield	20
Bow Thruster	20
Underwater Lights	20
A Beautiful Day!	21
Dockside	21
CONTACTS	22
Contact details	22

---

Telephones	22
Office hours	22
Address	22

---

# SPECIFICATIONS

---

## Overview

---

Here is a 46' Heritage Classic with the galley up arrangement. Powered by a pair of serviced Caterpillar 375hp 3208TA diesels with a Westmar bow thruster and Naiad stabilizers. Beautiful teak interior has upgraded granite galley countertops with some newer appliances, plus a dedicated pantry/laundry area. A galley up, two stateroom general arrangement. Master stateroom aft cabin has a queen walk-around berth with plenty of windows and an aft exit door to the cockpit. Extra custom drawer storage starboard and a bureau dresser to port in the Master, plus a nice private head and shower. The forward stateroom has a large V-berth that has filler cushion to make into a full berth. She has a 2005-model Novurania tender with 20hp Honda 4-stroke outboard and a UMT davit. The flybridge has a sturdy bimini top which is incorporated into an aluminum arch with a newer KVH sat TV dome antenna. There are two mounted helm chairs by Llebroc which are adjustable with contour cushions and footrests. The bridge also has a dinette lounge. **WASSAILING** had come out of the boatyard in early 2023 after getting her varnish refreshed, stabilizers serviced, and a bottom job.

This boat comes to market with an owner who is committed to the sale process. Most photos were taken 3/16/23, a few of the profile photos are older.

## Basic Information

---

**Category:** trawler

**Sub Category:** Aft Cabin

**Model Year:** 1995

**Year Built:** 1994

**Country:** United States

## Dimensions

---

**LOA:** 46' (14.02mm)

**LOD:** 47' 1" (14.35mm)

**Beam:** 14.75

**Min Draft:** 4' 6" (1.37mm)

---

## Speed, Capacities and Weight

---

**Cruise Speed:** 14 Knots Kts. (16 MPH)

**Max Speed:** 18 Knots Kts. (21 MPH)

**Gross Tonnage:** 21 Pounds

**Water Capacity:** 278 Gallons

**Holding Tank:** 40 Gal Gallons

**Fuel Capacity:** 600 Gal Gallons

---

## Accommodations

---

**Total Cabins:** 2

**Total Berths:** 2

**Total Heads:** 2

---

## Hull and Deck Information

---

**Hull Material:** Fiberglass

**Hull Configuration:** Semi-Displacement

---

## Engine Information

---

**Engines:** 2

**Manufacturer:** Caterpillar

**Engine Type:** Inboard

**Fuel Type:** Diesel



# PHOTOS



**Dockside-Fresh Varnished Transom**



**UMT Davit and Novourania RIB**





### Flybridge with Double Thick Cushions and Arch Mounted Daylight TV



### Flybridge Helm



### Flybridge with Enclosure



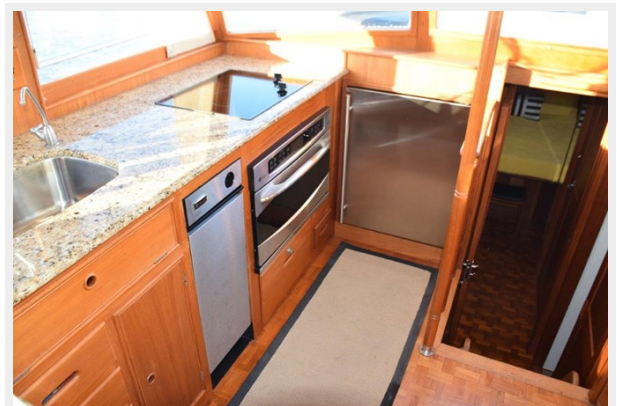
### Llebroc Helm and Companion Chairs



### Flybridge Dinette



### Galley with Granite Countertops





### Ultraleather Salon Settee with Storage Beneath



### Lower Helm



### Naiad Stabilizers, Radios and Helm Accessories



### Expanding Teak Hi-Lo Table



### Salon Flat Panel TV



### Refrigerator and Stovetop



**Icemaker/Refrigerator**



**Microwave and Trash Compactor**



**Aft Master Stateroom**



**Master Head Portside**



**Solid Surface Countertop**



**Separate Shower Closet to Starboard Side**





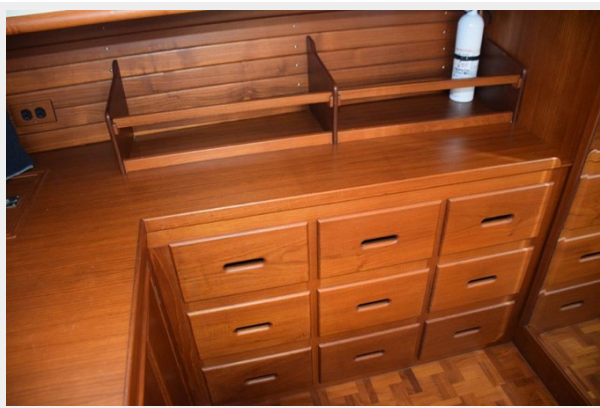
**Walkaround Queen Berth with LED Reading Lights**



**Desk-Dresser to Portside**



**Portside Dresser Drawers**



**Starboard Side Dresser Drawers**



**Master Stateroom TV and Salon Door Closed**



**Hull 163 Emblem**



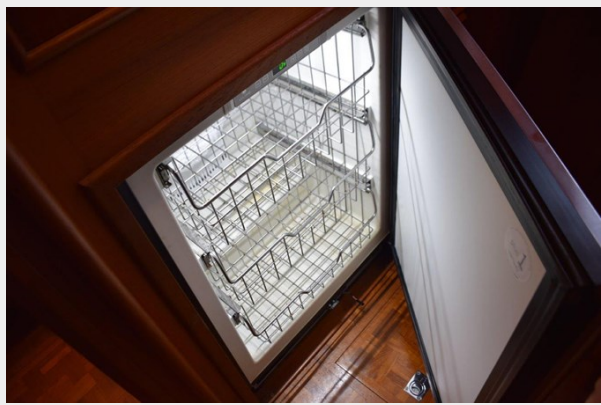
### Main Electrical Breaker-Switching Panel



### Portside Pantry Area



### Freezer in Pantry



### Pantry Cabinets and Shelves



### Forward Pantry Cabinet and Shelves



### Manual Reference Storage

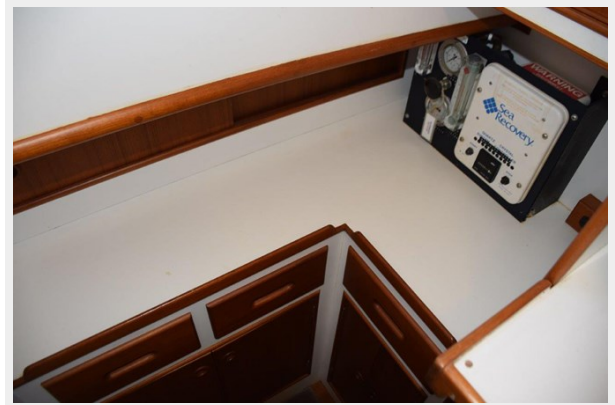




**LG Combo Washer/Dryer in Laundry Area-  
Starboard**



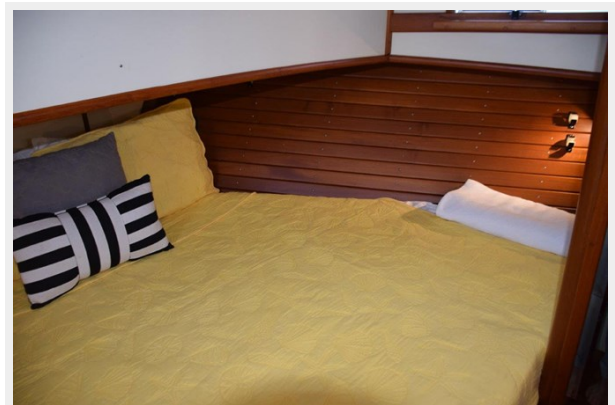
**Laundry Area Counter**



**Forward Guest Stateroom Berth**



**Forward Stateroom-Starboard Side Teak  
Cladding**



**Forward Stateroom TV and Hanging Locker**



**DVD Player, Closet, and AC Thermostat**



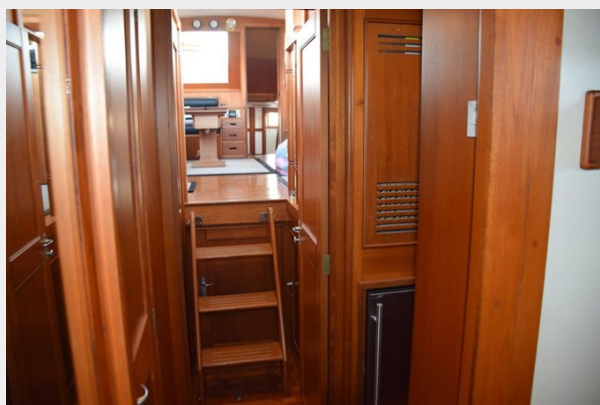
**Guest Head-Forward to Starboard**



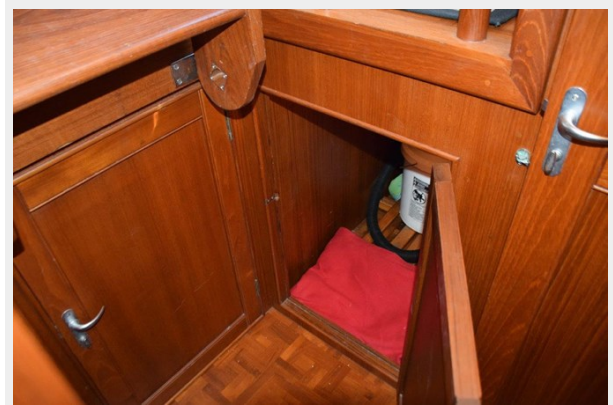
**Guest Shower Stall**



**Looking Aft from Guest Stateroom**



**Storage Area Accessed with Steps Raised**



**Flybridge Helm Accessories**



**Flo-Scans and VHF Radios on Flybridge**





**Flybridge Helm**



**Flybridge Electronics**



**Underside of Flybridge Arch with LED Lighting**



**TracVision SAT TV Antenna**



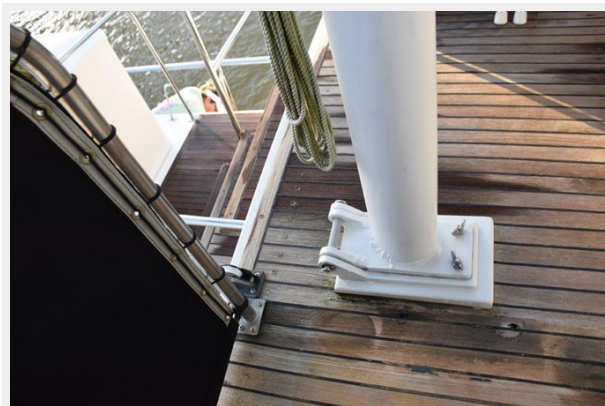
**Flybridge Enclosure, Spotlight, and Windscreen**



**Antenna Mast, Spreader Lights, and Camera**



**Hinged Mast**



**Foredeck Cushions**



**Nameboards**



**Bow**



**Upgraded Stainless Safety Rails**



**Pulpit with Two Mounted Anchors and Windlass**





**Tender and Storage Box on Trunk Cabin**



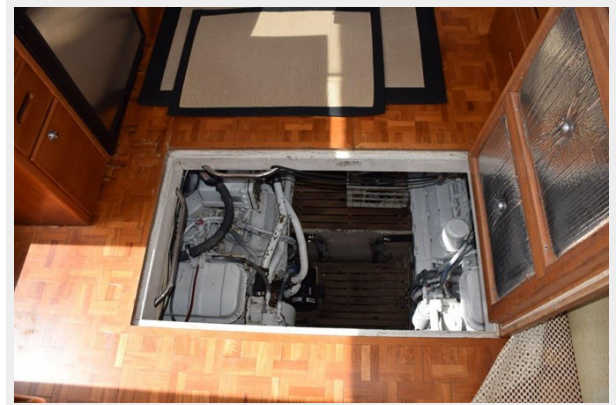
**Honda 4-Stroke Outboard**



**Aft Control for Glendinning Cablemaster, TV Phone Inlet Plugs, Freshwater Shower**



**Overhead Dropdown Hatch to Engine Room**



**Under Stairway Entrance to Engine Room**



**Twin 3208TA CAT Diesels**





**375HP CAT's Fully Serviced**



**View to Front of Engine Room**



**Newer Exhaust Blankets**



**Forward Starboard Engine Room**



**GB Wiring Cabinet**



**Inverter-Portside**



## Fresh Bottom Job



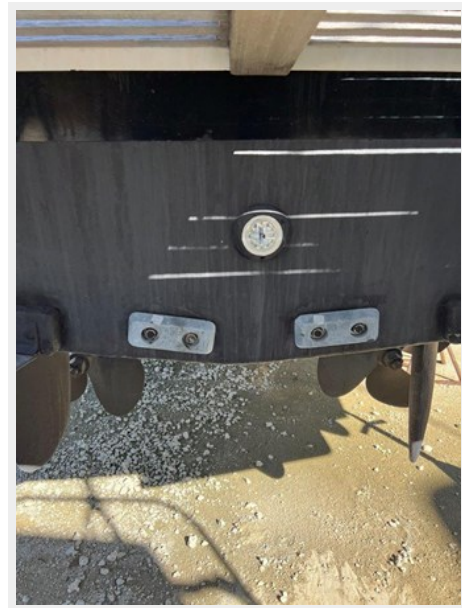
## Northern Light Generator in Sound Shield



## Bow Thruster



## Underwater Lights

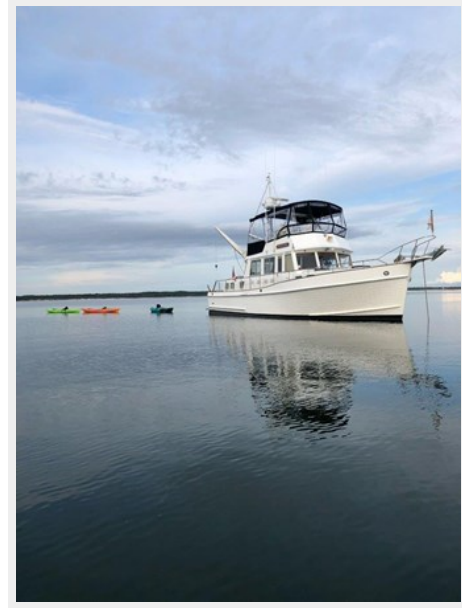




### Dockside



### A Beautiful Day!



---

# CONTACTS

---

Andrey Shestakov, leading yacht broker of the sales department of Shestakov Yacht Sales Inc. Shestakov Yacht Sales Inc., the official representative of the Miami/Fort Lauderdale FL headquarters.

---

## Contact details

---

Email: [andrey@shestakovyachtsales.com](mailto:andrey@shestakovyachtsales.com)

Web: [shestakovyachtsales.com/en/](http://shestakovyachtsales.com/en/)

---

## Telephones

---

USA: +1(954)274-4435

---

## Office hours

---

Monday – Saturday: **9:00 - 21:00** EDT

Sunday: **closed**

---

## Address

---



Harbour Towne Marina, 850 NE 3rd St,  
STE 213, Dania, FL 33004