

REEF DAWG — HYDRA-SPORTS



Builder: HYDRA-SPORTS

Year Built: 2014

Model: center_console

Price: PRICE ON APPLICATION

Location: United States

LOA: 34' (10.36mm)

Beam: 10.33

Min Draft: 2' (0.61mm)

Max Draft: 2' (0.61mm)

Cruise Speed: 26 Knots Kts. (30 MPH)

Max Speed: 43 Knots Kts. (49 MPH)

Our experienced yacht broker, Andrey Shestakov, will help you choose and buy a yacht that best suits your needs Reef Dawg — HYDRA-SPORTS from our catalogue. Presently, at Shestakov Yacht Sales Inc., we have a wide variety of yachts available on our sale's list. We also work in close contact with all the big yacht manufacturers from all over the world.

If you would like to buy a yacht Reef Dawg — HYDRA-SPORTS or would like help answering any questions concerning purchasing, selling or chartering a yacht, please call +1(954)274-4435

TABLE OF CONTENTS

TABLE OF CONTENTS	2
SPECIFICATIONS	5
Overview	5
Basic Information	5
Dimensions	5
Speed, Capacities and Weight	5
Hull and Deck Information	5
Engine Information	5
PHOTOS	6
0_2797777_34_hydra_sports_port_profile1	6
1_2797777_34_hydra_sports_port_profile2	6
2_2797777_34_hydra_sports_port_profile3	6
3_2797777_34_hydra_sports_port_profile4	6
5_2797777_34_hydra_sports_port_forward_profile2	6
4_2797777_34_hydra_sports_port_forward_profile1	6
6_2797777_34_hydra_sports_port_aft_profile	6
7_2797777_34_hydra_sports_starboard_forward_profile1	6
8_2797777_34_hydra_sports_starboard_profile	7
9_2797777_34_hydra_sports_starboard_aft_profile	7
10_2797777_34_hydra_sports_aft_profile	7
11_2797777_34_hydra_sports_underway	7
12_2797777_34_hydra_sports_anchor	7
13_2797777_34_hydra_sports_anchor_windlass	7
14_2797777_34_hydra_sports_anchor_chain_locker	7
15_2797777_34_hydra_sports_starboard_forward_gunwhale_storage	7
16_2797777_34_hydra_sports_foredeck1	8
17_2797777_34_hydra_sports_foredeck2	8
18_2797777_34_hydra_sports_foredeck_aft	8

19_2797777_34_hydra_sports_forward_console_seating	8
20_2797777_34_hydra_sports_foredeck_storage	8
21_2797777_34_hydra_sports_foredeck_seating_storage	8
23_2797777_34_hydra_sports_port_side_deck	8
22_2797777_34_hydra_sports_forward_console_seating_storage	8
25_2797777_34_hydra_sports_starboard_side_deck	9
24_2797777_34_hyfra_sports_port_bulwark_storage	9
26_2797777_34_hydra_sports_starboard_bulwark_storage	9
27_2797777_34_hydra_sports_console_interior	9
28_2797777_34_hydra_sports_tower	9
29_2797777_34_hydra_sports_tower_helm	9
30_2797777_34_hydra_sports_tower_view_forward	10
31_2797777_34_hydra_sports_tower_view_aft	10
32_2797777_34_hydra_sports_helm1	10
33_2797777_34_hydra_sports_helm2	10
34_2797777_34_hydra_sports_helm_vhf	10
35_2797777_34_hydra_sports_helm_cover	10
36_2797777_34_hydra_sports_helmseats1	10
37_2797777_34_hydra_sports_helmseats2	10
38_2797777_34_hydra_sports_helmseats_storage	11
39_2797777_34_hydra_sports_helmseats_tackle_drawers	11
40_2797777_34_hydra_sports_cockpit_forward	11
41_2797777_34_hydra_sports_cockpit_port	11
42_2797777_34_hydra_sports_cockpit_starboard	11
43_2797777_34_hydra_sports_cockpit_aft	11
44_2797777_34_hydra_sports_cockpit_aft_seating	11
45_2797777_34_hydra_sports_starboard_boarding_gate	11
46_2797777_34_hydra_sports_cockpit_livewell	12
47_2797777_34_hydra_sports_cockpit_sink	12

49_2797777_34_hydra_sports_transom	12
48_2797777_34_hydra_sports_aft_tackle_drawers	12
50_2797777_34_hydra_sports_outboards1	12
51_2797777_34_hydra_sports_outboards2	12
52_2797777_34_hydra_sports_outboards2	12
53_2797777_34_hydra_sports_fuel_manifold	12
54_2797777_34_hydra_sports_battery_charger	13
55_2797777_34_hydra_sports_battery_bank	13
56_2797777_34_hydra_sports_aft_bilge	13
57_2797777_34_hydra_sports_hull_bottom_forward	13
58_2797777_34_hydra_sports_hull_bottom_aft	13
CONTACTS	14
Contact details	14
Telephones	14
Office hours	14
Address	14

SPECIFICATIONS

Overview

Reef Hawg is a 2014 34' Hydra-Sports Custom center console in good condition. She is stored inside on a rack and captain maintained. Seller is moving up to a larger boat, so Reef Dawg is now available for sale. She offers triple Yamaha 300 4 stroke outboards, hinged tower, Simrad electronics (2021), underwater lights, a huge amount of storage, 26 rod holders and a starboard side boarding gate. The seller is the original owner and had the holding tank removed and an additional fresh water tank installed for a total of 59 gallons fresh water capacity.

Basic Information

Category: center_console **Sub Category:** Center Console
Model Year: 2014 **Year Built:** 2014
Country: United States

Dimensions

LOA: 34' (10.36mm) **Beam:** 10.33
Min Draft: 2' (0.61mm) **Max Draft:** 2' (0.61mm)

Speed, Capacities and Weight

Cruise Speed: 26 Knots Kts. (30 MPH) **Max Speed:** 43 Knots Kts. (49 MPH)
Water Capacity: 59 Gallons **Fuel Capacity:** 352 Gal Gallons

Hull and Deck Information

Hull Material: Fiberglass

Engine Information

Engines: 3 **Manufacturer:** Yamaha
Engine Type: Outboard **Fuel Type:** Gas/Petrol

PHOTOS

0_2797777_34_hydra_sports_port_profile1



1_2797777_34_hydra_sports_port_profile2



2_2797777_34_hydra_sports_port_profile3



3_2797777_34_hydra_sports_port_profile4



5_2797777_34_hydra_sports_port_forward_profile2



4_2797777_34_hydra_sports_port_forward_profile1



6_2797777_34_hydra_sports_port_aft_profile



7_2797777_34_hydra_sports_starboard_forward_profile1



8_2797777_34_hydra_sports_starboard_profile



9_2797777_34_hydra_sports_starboard_aft_profile



10_2797777_34_hydra_sports_aft_profile



11_2797777_34_hydra_sports_underway



12_2797777_34_hydra_sports_anchor



13_2797777_34_hydra_sports_anchor_windlass



14_2797777_34_hydra_sports_anchor_chain_locker 15_2797777_34_hydra_sports_starboard_forward_gunwhale_storage



16_2797777_34_hydra_sports_foredeck1



17_2797777_34_hydra_sports_foredeck2



18_2797777_34_hydra_sports_foredeck_aft



19_2797777_34_hydra_sports_forward_console_seating



20_2797777_34_hydra_sports_foredeck_storage



21_2797777_34_hydra_sports_foredeck_seating_storage



23_2797777_34_hydra_sports_port_side_deck

22_2797777_34_hydra_sports_forward_console_seating_storage



25_2797777_34_hydra_sports_starboard_side_deck



24_2797777_34_hydra_sports_port_bulwark_storage



26_2797777_34_hydra_sports_starboard_bulwark_storage



27_2797777_34_hydra_sports_console_interior



28_2797777_34_hydra_sports_tower



29_2797777_34_hydra_sports_tower_helm



30_2797777_34_hydra_sports_tower_view_forward



31_2797777_34_hydra_sports_tower_view_aft



32_2797777_34_hydra_sports_helm1



33_2797777_34_hydra_sports_helm2



34_2797777_34_hydra_sports_helm_vhf



35_2797777_34_hydra_sports_helm_cover



36_2797777_34_hydra_sports_helmseats1



37_2797777_34_hydra_sports_helmseats2



38_2797777_34_hydra_sports_helmseats_storage



39_2797777_34_hydra_sports_helmseats_tackle_drawers



40_2797777_34_hydra_sports_cockpit_forward



41_2797777_34_hydra_sports_cockpit_port



42_2797777_34_hydra_sports_cockpit_starboard



43_2797777_34_hydra_sports_cockpit_aft



44_2797777_34_hydra_sports_cockpit_aft_seating



45_2797777_34_hydra_sports_starboard_boarding_gate



46_2797777_34_hydra_sports_cockpit_livewell



47_2797777_34_hydra_sports_cockpit_sink



48_2797777_34_hydra_sports_aft_tackle_drawers



49_2797777_34_hydra_sports_transom



50_2797777_34_hydra_sports_outboards1



51_2797777_34_hydra_sports_outboards2



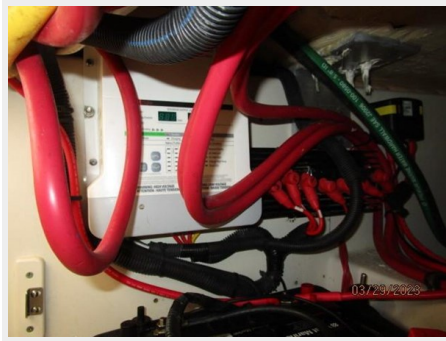
52_2797777_34_hydra_sports_outboards2



53_2797777_34_hydra_sports_fuel_manifold



54_2797777_34_hydra_sports_battery_charger



55_2797777_34_hydra_sports_battery_bank



56_2797777_34_hydra_sports_aft_bilge



57_2797777_34_hydra_sports_hull_bottom_forward



58_2797777_34_hydra_sports_hull_bottom_aft



CONTACTS

Andrey Shestakov, leading yacht broker of the sales department of Shestakov Yacht Sales Inc. Shestakov Yacht Sales Inc., the official representative of the Miami/Fort Lauderdale FL headquarters.

Contact details

Email:
andrey@shestakovyachtsales.com

Web: shestakovyachtsales.com/en/

Telephones

USA: +1(954)274-4435

Office hours

Monday – Saturday: **9:00 - 21:00 EDT**

Sunday: **closed**

Address



Harbour Towne Marina, 850 NE 3rd St,
STE 213, Dania, FL 33004