

BUOY TOY — SEA RAY



Builder: SEA RAY

Year Built: 2002

Model: cruiser

Price: PRICE ON APPLICATION

Location: United States

LOA: 31' 1" (9.47mm)

Beam: 9.41

Max Draft: 3' 2" (0.97mm)

Cruise Speed: 23 Knots Kts. (26 MPH)

Max Speed: 30 Knots Kts. (35 MPH)

Our experienced yacht broker, Andrey Shestakov, will help you choose and buy a yacht that best suits your needs **BUOY TOY — SEA RAY** from our catalogue. Presently, at Shestakov Yacht Sales Inc., we have a wide variety of yachts available on our sale's list. We also work in close contact with all the big yacht manufacturers from all over the world.

If you would like to buy a yacht **BUOY TOY — SEA RAY** or would like help answering any questions concerning purchasing, selling or chartering a yacht, please call **+1(954)274-4435**

TABLE OF CONTENTS

TABLE OF CONTENTS	2
SPECIFICATIONS	5
Overview	5
Basic Information	5
Dimensions	5
Speed, Capacities and Weight	6
Accommodations	6
Hull and Deck Information	6
Engine Information	6
PHOTOS	7
2	7
3	7
4	7
5	7
7	7
6	7
8	8
9	8
10	8
11	8
12	9
13	9
14	9
15	9
16	9
17	9
18	10
19	10

20	10
21	10
22	10
23	10
25	11
24	11
26	11
27	11
28	11
29	11
31	12
30	12
32	12
33	12
35	12
34	12
36	13
37	13
38	13
39	13
40	13
41	13
42	14
43	14
44	14
45	14
CONTACTS	15
Contact details	15
Telephones	15

Office hours	15
Address	15

SPECIFICATIONS

Overview

This Fresh Water Sea Ray 280 Sundancer is beautiful, sleek and comfortable. With room to sleep six, she's just right for families who hate to leave the water when darkness falls. The air conditioning and generator also make it a perfect vessel for those long-extended weekend boating adventures! Beginning with her spacious single-level cockpit with wet bar, portside lounge, and transom door, the stern bench seat folds out of the way when not needed and the rear-facing bench seat converts to a sun lounge. A centerline companionway leads to the 280's cherry-trimmed interior with U-shaped dinette to port, full-service galley opposite, convertible V-berth forward (with removable table), and a compact head/shower to starboard. An extended swim platform and retractable ladder are standard, and a convenient rope storage locker is built into the transom. Molded steps in the sliding companionway door provide quick bow and forward deck access via the walk-thru windshield. Built on a solid fiberglass deep-V hull, twin (2) 220hp 4.3L MPI MerCruiser engines and (2) new (in 2020) Alpha sterndrives for added reliability.

This is and always has been a 100 percent Fresh Water Boat. Don't miss out on being the next proud owner of this immaculate Sea Ray 280 Sundancer by inquiring today!

Basic Information

Category: cruiser

Sub Category: Express

Model Year: 2002

Year Built: 2002

Country: United States

Dimensions

LOA: 31' 1" (9.47mm)

LWL: 28' (8.53mm)

Beam: 9.41

Max Draft: 3' 2" (0.97mm)

Speed, Capacities and Weight

Cruise Speed: 23 Knots Kts. (26 MPH)

Max Speed: 30 Knots Kts. (35 MPH)

Water Capacity: 28 Gallons

Holding Tank: 28 Gal Gallons

Fuel Capacity: 100 Gal Gallons

Accommodations

Total Cabins: 1

Total Berths: 3

Total Heads: 1

Hull and Deck Information

Hull Material: Fiberglass

Engine Information

Engines: 2

Manufacturer: Mercruiser

Engine Type: I/O

Fuel Type: Gas

PHOTOS

2



3



4



5



6



7



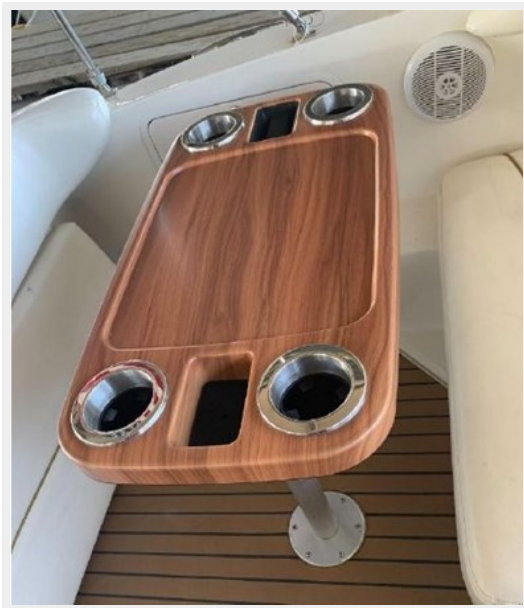
8



9



10



11



12



13



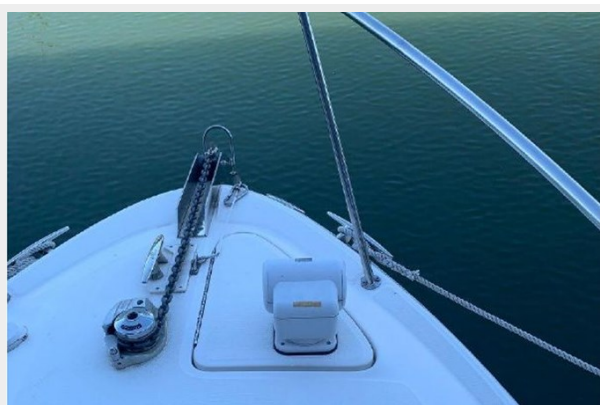
14



15



16



17



18



19



20



21



22



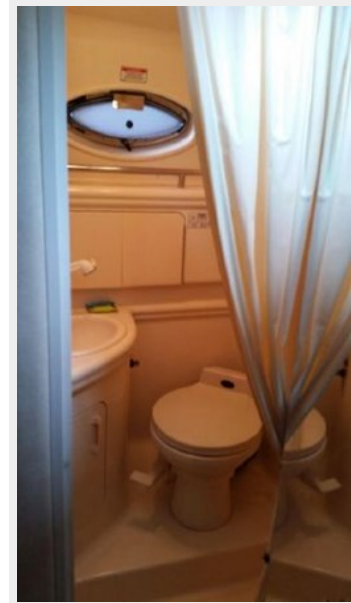
23



24



25



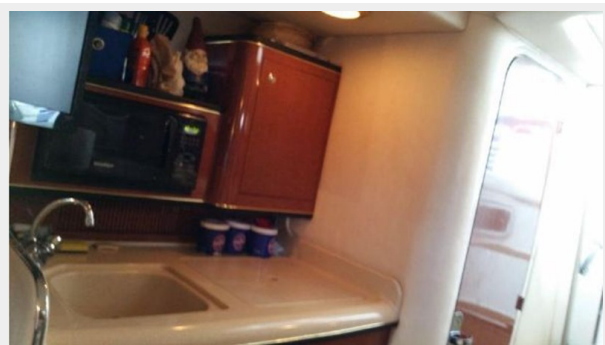
26



27



28



29



30



31



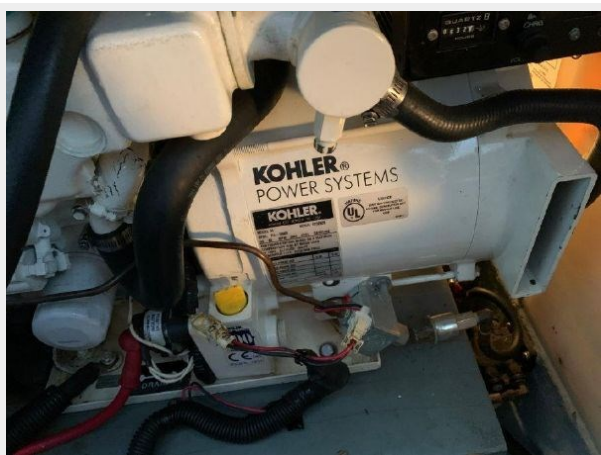
32



33



34



35



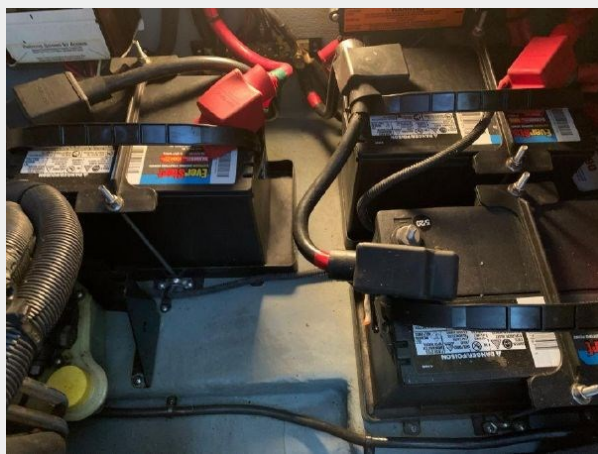
36



37



38



39



40



41



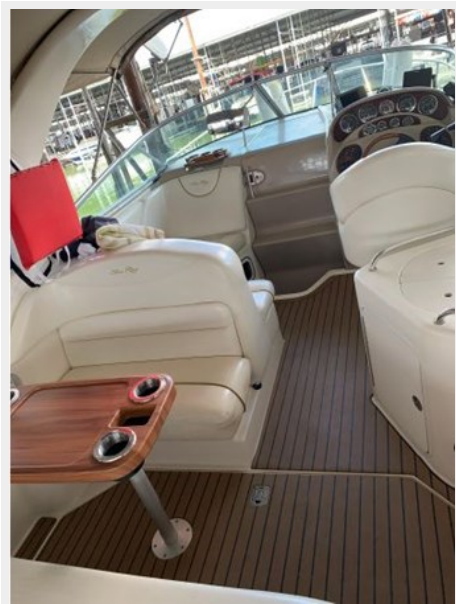
42



43



44



45



CONTACTS

Andrey Shestakov, leading yacht broker of the sales department of Shestakov Yacht Sales Inc. Shestakov Yacht Sales Inc., the official representative of the Miami/Fort Lauderdale FL headquarters.

Contact details

Email: andrey@shestakovyachtsales.com

Web: shestakovyachtsales.com/en/

Telephones

USA: +1(954)274-4435

Office hours

Monday – Saturday: **9:00 - 21:00** EDT

Sunday: **closed**

Address



Harbour Towne Marina, 850 NE 3rd St,
STE 213, Dania, FL 33004