

37' MIDNIGHT EXPRESS — MIDNIGHT EXPRESS POWERBOATS



Builder:

MIDNIGHT EXPRESS POWERBOATS

Year Built: 2009

Model: center_console

Price: PRICE ON APPLICATION

Location: United States

LOA: 37' (11.28mm)

Beam: 11.41

Max Draft: 1' 6" (0.46mm)

Cruise Speed: 34.76 Knots Kts. (40 MPH)

Max Speed: 52.14 Knots Kts. (60 MPH)

Our experienced yacht broker, Andrey Shestakov, will help you choose and buy a yacht that best suits your needs 37' Midnight Express — MIDNIGHT EXPRESS POWERBOATS from our catalogue. Presently, at Shestakov Yacht Sales Inc., we have a wide variety of yachts available on our sale's list. We also work in close contact with all the big yacht manufacturers from all over the world.

If you would like to buy a yacht 37' Midnight Express — MIDNIGHT EXPRESS POWERBOATS or would like help answering any questions concerning purchasing, selling or chartering a yacht, please call +1(954)274-4435

TABLE OF CONTENTS

TABLE OF CONTENTS	2
SPECIFICATIONS	3
Overview	3
Basic Information	3
Dimensions	3
Speed, Capacities and Weight	3
Accommodations	4
Hull and Deck Information	4
Engine Information	4
PHOTOS	5
CONTACTS	10
Contact details	10
Telephones	10
Office hours	10
Address	10

SPECIFICATIONS

Overview

This is a very clean vessel that was just pulled out of the water in February 2023 for routine annual maintenance. Brand new bottom paint and 100-hour engine service completed annually. Primed and ready to be enjoyed for the season by the next owner. The boat is equipped with three 350 HP Mercury Verado Engines (2016) for a total of 1050 HP. The engines are not heavily used, with only 470 total hours. The current owner has maintained this boat extremely well and made significant upgrades to the boat in the last three years of ownership, please see list below. The vessel has been captain-maintained with bi-weekly washing/detailing and constant oversight. This vessel has FLIR night vision, a windlass anchor, a bow thruster, Seadeck throughout, a head, just to name a few.

Basic Information

Category: center_console

Sub Category: Center Console

Model Year: 2009

Year Built: 2009

Country: United States

Dimensions

LOA: 37' (11.28mm)

Beam: 11.41

Max Draft: 1' 6" (0.46mm)

Speed, Capacities and Weight

Cruise Speed: 34.76 Knots Kts. (40 MPH)

Max Speed: 52.14 Knots Kts. (60 MPH)

Water Capacity: 45 Gallons

Holding Tank: 9 Gal Gallons

Fuel Capacity: 360 Gal Gallons

Accommodations

Total Heads: 1

Hull and Deck Information

Hull Material: Fiberglass

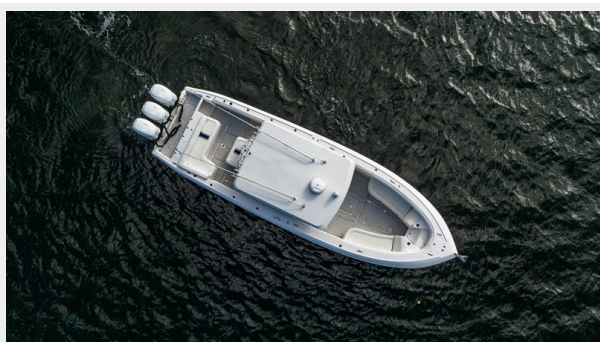
Engine Information

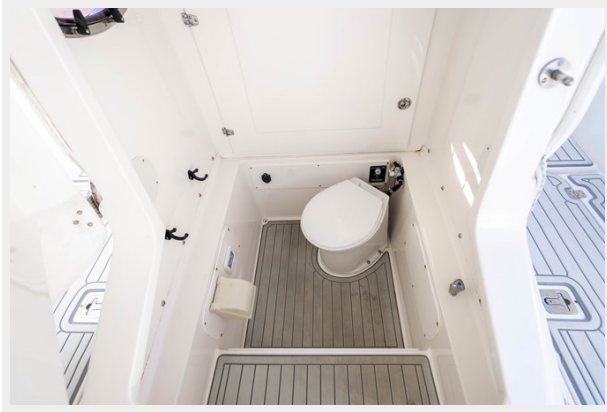
Engines: 3

Manufacturer: Mercury

Fuel Type: Gas

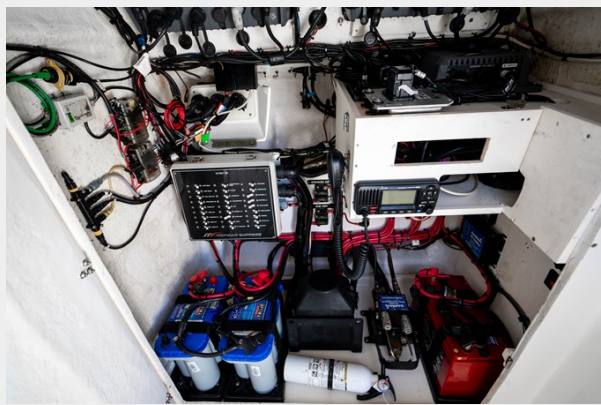
PHOTOS











CONTACTS

Andrey Shestakov, leading yacht broker of the sales department of Shestakov Yacht Sales Inc. Shestakov Yacht Sales Inc., the official representative of the Miami/Fort Lauderdale FL headquarters.

Contact details

Email: andrey@shestakovyachtsales.com

Web: shestakovyachtsales.com/en/

Telephones

USA: +1(954)274-4435

Office hours

Monday – Saturday: **9:00 - 21:00** EDT

Sunday: **closed**

Address



Harbour Towne Marina, 850 NE 3rd St,
STE 213, Dania, FL 33004