

## SEXSEA — PRINCESS YACHTS



**Builder:** PRINCESS YACHTS

**Year Built:** 2017

**Model:** Sport Yacht

**Price:** PRICE ON APPLICATION

**Location:** United States

**LOA:** 72' (21.95mm)

**Beam:** 17.66

**Max Draft:** 4' 10" (1.47mm)

Our experienced yacht broker, Andrey Shestakov, will help you choose and buy a yacht that best suits your needs **Sexsea — PRINCESS YACHTS** from our catalogue. Presently, at Shestakov Yacht Sales Inc., we have a wide variety of yachts available on our sale's list. We also work in close contact with all the big yacht manufacturers from all over the world.

If you would like to buy a yacht **Sexsea — PRINCESS YACHTS** or would like help answering any questions concerning purchasing, selling or chartering a yacht, please call **+1(954)274-4435**

# TABLE OF CONTENTS

---

TABLE OF CONTENTS	2
SPECIFICATIONS	5
Overview	5
Basic Information	6
Dimensions	6
Speed, Capacities and Weight	6
Accommodations	6
Hull and Deck Information	6
Engine Information	6
PHOTOS	7
8510258_20220929145133615_1_XLARGE	7
8510258_20220929144542757_1_XLARGE	7
8510258_20220929144559325_1_XLARGE	7
8510258_20220929145311609_1_XLARGE	7
8510258_20220929145320210_1_XLARGE	7
8510258_20220929145151697_1_XLARGE	7
8510258_20220929145237612_1_XLARGE	8
8510258_20220929145257934_1_XLARGE	8
8510258_20220929144822047_1_XLARGE	8
8510258_20220929144648859_1_XLARGE	8
8510258_20220929151024997_1_XLARGE	8
8510258_20220929151031569_1_XLARGE	8
8510258_20220929151039505_1_XLARGE	8
8510258_20220929151046941_1_XLARGE	8
8510258_20220929151053187_1_XLARGE	9
8510258_20220929151059437_1_XLARGE	9
8510258_20220929151107081_1_XLARGE	9
8510258_20220929151112891_1_XLARGE	9

---

8510258_20220929152059362_1_XLARGE	9
8510258_20220929151118932_1_XLARGE	9
8510258_20220929152107045_1_XLARGE	10
8510258_20220929152045053_1_XLARGE	10
8510258_20220929152114595_1_XLARGE	10
8510258_20220929152643373_1_XLARGE	10
8510258_20220929152653557_1_XLARGE	10
8510258_20220929152636219_1_XLARGE	10
8510258_20220929152702906_1_XLARGE	11
8510258_20220929152713238_1_XLARGE	11
8510258_20220929152722187_1_XLARGE	11
8510258_20220929152731200_1_XLARGE	11
8510258_20220929152740837_1_XLARGE	11
8510258_20220929152747356_1_XLARGE	11
8510258_20220929152757484_1_XLARGE	12
8510258_20220929152806172_1_XLARGE	12
8510258_20220929152826494_1_XLARGE	12
8510258_20220929152835071_1_XLARGE	12
8510258_20220929163321421_1_XLARGE	12
8510258_20220929151529707_1_XLARGE	12
8510258_20220929151545832_1_XLARGE	13
8510258_20220929152012405_1_XLARGE	13
8510258_20220929152029095_1_XLARGE	13
8510258_20220929152036486_1_XLARGE	13
8510258_20220929153524704_1_XLARGE	13
8510258_20220929162727307_1_XLARGE	13
8510258_20220929162731286_1_XLARGE	14
8510258_20220929151442917_1_XLARGE	14
8510258_20220929151456592_1_XLARGE	14

---

---

8510258_20220929151513407_1_XLARGE	14
8510258_20220929151522401_1_XLARGE	14
8510258_20220929153621344_1_XLARGE	14
8510258_20220929151416507_1_XLARGE	15
8510258_20220929151424338_1_XLARGE	15
8510258_20220929151432915_1_XLARGE	15
8510258_20220929153243510_1_XLARGE	15
8510258_20220929153508562_1_XLARGE	15
8510258_20220929153516528_1_XLARGE	15
8510258_20220929154100992_1_XLARGE	16
8510258_20220929154108987_1_XLARGE	16
8510258_20220929153628487_1_XLARGE	16
8510258_20220929153636472_1_XLARGE	16
8510258_20220929154043301_1_XLARGE	16
8510258_20220929154051930_1_XLARGE	16
8510258_20220929154118904_1_XLARGE	17
CONTACTS	18
Contact details	18
Telephones	18
Office hours	18
Address	18

---

# SPECIFICATIONS

---

## Overview

---

**Seller is willing to offer up to \$45k of shipping costs to East Coast**

- LLC Owned
- Seakeeper 26 Gyro Stabilizer
- Palm Beach 1200 Tender in Garage
- Upgraded ZF Hydraulic Bow and Stern Thrusters with integrated Joystick
- Three Helm Stations
- Electric Bimini on Sport Bridge

SEXSEA is outfitted with twin Caterpillar C32 1723 HP w/ 430 hrs, she will handle every bit as well as she looks. A proven deep-V hull and low centre of gravity and a Seakeeper 26 will deliver a very fast and stable ride. Her sleek and aggressive exterior lines and styling give her a look that will get everyone's attention.

Above the hydraulic swim platform is a sun pad lounging area, and forward is a deep and wide surround of cockpit seating and a full wet bar to starboard for maximum on the water lifestyle. On the port side is a elegant stainless steel and teak stairway the leads to the roomy sport bridge which has plenty of seating. The salon is designed to flow into the cockpit, creating a massive one-level living area for entertaining. The giant windows throughout the salon really give you the feel of being outside while enjoying the interior comfort. Below decks, is a three-cabin three-head layout that includes a full beam owner's stateroom that has beautiful ocean views from the massive windows.

The foredeck has a very nice seating area with sun lounge that is perfect for drinks and snack while enjoying some sun or a beautiful sunset. All the way aft is a huge hydraulic swim platform that has the ability to store a large jet ski and a garage for water toys and tender. Just to port is the crew quarters with twin beds, head and shower.

---

## Basic Information

---

**Category:** Sport Yacht

**Model Year:** 2017

**Year Built:** 2017

**Country:** United States

---

## Dimensions

---

**LOA:** 72' (21.95mm)

**LOD:** 73' 2" (22.3mm)

**Beam:** 17.66

**Max Draft:** 4' 10" (1.47mm)

---

## Speed, Capacities and Weight

---

**Water Capacity:** 206 Gallons

**Fuel Capacity:** 1268 Gal Gallons

---

## Accommodations

---

**Total Cabins:** 4

**Total Heads:** 4

---

## Hull and Deck Information

---

**Hull Material:** Fiberglass

---

## Engine Information

---

**Engines:** 2

**Manufacturer:** MAN

**Engine Type:** Inboard

**Fuel Type:** Diesel

# PHOTOS

8510258\_20220929145133615\_1\_XLARGE



8510258\_20220929144542757\_1\_XLARGE



8510258\_20220929144559325\_1\_XLARGE



8510258\_20220929145311609\_1\_XLARGE



8510258\_20220929145320210\_1\_XLARGE



8510258\_20220929145151697\_1\_XLARGE





8510258\_20220929145237612\_1\_XLARGE



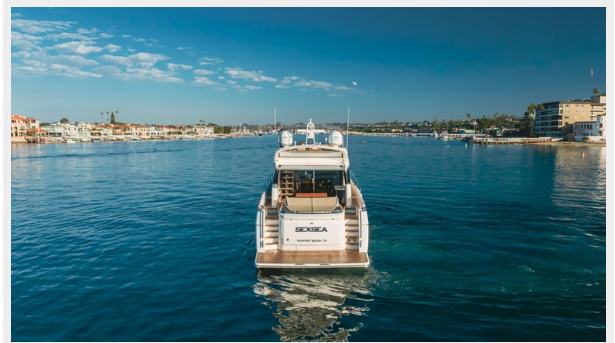
8510258\_20220929145257934\_1\_XLARGE



8510258\_20220929144822047\_1\_XLARGE



8510258\_20220929144648859\_1\_XLARGE



8510258\_20220929151024997\_1\_XLARGE



8510258\_20220929151031569\_1\_XLARGE



8510258\_20220929151039505\_1\_XLARGE



8510258\_20220929151046941\_1\_XLARGE





8510258\_20220929151053187\_1\_XLARGE



8510258\_20220929151059437\_1\_XLARGE



8510258\_20220929151107081\_1\_XLARGE



8510258\_20220929151112891\_1\_XLARGE



8510258\_20220929151118932\_1\_XLARGE



8510258\_20220929152059362\_1\_XLARGE



8510258\_20220929152107045\_1\_XLARGE



8510258\_20220929152045053\_1\_XLARGE



8510258\_20220929152114595\_1\_XLARGE

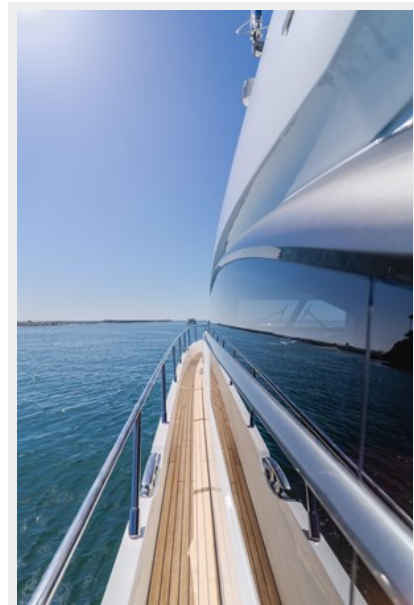


8510258\_20220929152643373\_1\_XLARGE



8510258\_20220929152653557\_1\_XLARGE

8510258\_20220929152636219\_1\_XLARGE





8510258\_20220929152702906\_1\_XLARGE



8510258\_20220929152713238\_1\_XLARGE



8510258\_20220929152722187\_1\_XLARGE



8510258\_20220929152731200\_1\_XLARGE



8510258\_20220929152740837\_1\_XLARGE



8510258\_20220929152747356\_1\_XLARGE



8510258\_20220929152757484\_1\_XLARGE



8510258\_20220929152806172\_1\_XLARGE



8510258\_20220929152826494\_1\_XLARGE



8510258\_20220929152835071\_1\_XLARGE



8510258\_20220929163321421\_1\_XLARGE



8510258\_20220929151529707\_1\_XLARGE





8510258\_20220929151545832\_1\_XLARGE



8510258\_20220929152012405\_1\_XLARGE



8510258\_20220929152029095\_1\_XLARGE



8510258\_20220929152036486\_1\_XLARGE



8510258\_20220929153524704\_1\_XLARGE



8510258\_20220929162727307\_1\_XLARGE





8510258\_20220929162731286\_1\_XLARGE



8510258\_20220929151442917\_1\_XLARGE



8510258\_20220929151456592\_1\_XLARGE



8510258\_20220929151513407\_1\_XLARGE



8510258\_20220929151522401\_1\_XLARGE



8510258\_20220929153621344\_1\_XLARGE



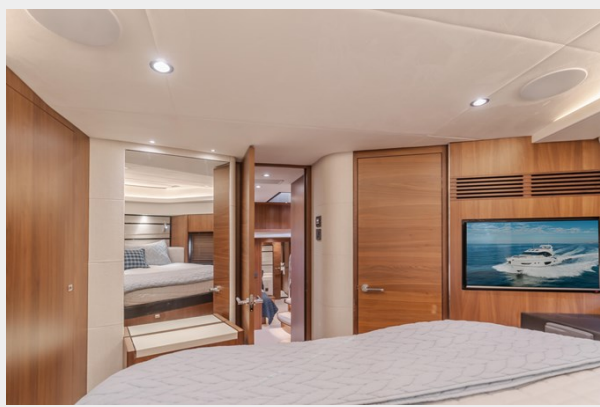
8510258\_20220929151416507\_1\_XLARGE



8510258\_20220929151424338\_1\_XLARGE



8510258\_20220929151432915\_1\_XLARGE



8510258\_20220929153243510\_1\_XLARGE



8510258\_20220929153508562\_1\_XLARGE



8510258\_20220929153516528\_1\_XLARGE





8510258\_20220929154100992\_1\_XLARGE



8510258\_20220929154108987\_1\_XLARGE



8510258\_20220929153628487\_1\_XLARGE



8510258\_20220929153636472\_1\_XLARGE



8510258\_20220929154043301\_1\_XLARGE



8510258\_20220929154051930\_1\_XLARGE



8510258\_20220929154118904\_1\_XLARGE



# CONTACTS

---

Andrey Shestakov, leading yacht broker of the sales department of Shestakov Yacht Sales Inc. Shestakov Yacht Sales Inc., the official representative of the Miami/Fort Lauderdale FL headquarters.

## Contact details

---

Email: [andrey@shestakovyachtsales.com](mailto:andrey@shestakovyachtsales.com)

Web: [shestakovyachtsales.com/en/](http://shestakovyachtsales.com/en/)

## Telephones

---

USA: +1(954)274-4435

## Office hours

---

Monday – Saturday: **9:00 - 21:00** EDT

Sunday: **closed**

## Address

---



Harbour Towne Marina, 850 NE 3rd St,  
STE 213, Dania, FL 33004