

EL PAVICA — FERRETTI YACHTS



Builder: FERRETTI YACHTS

Year Built: 2006

Model: Motor Yacht

Price: \$1,850,000 USD

Location: N/A

LOA: 88' 3" (26.9mm)

Beam: 21.08

Max Draft: 7' (2.13mm)

Cruise Speed: 20 Knots Kts. (23 MPH)

Max Speed: 25 Knots Kts. (29 MPH)

Our experienced yacht broker, Andrey Shestakov, will help you choose and buy a yacht that best suits your needs **El Pavica — FERRETTI YACHTS** from our catalogue. Presently, at **Shestakov Yacht Sales Inc.**, we have a wide variety of yachts available on our sale's list. We also work in close contact with all the big yacht manufacturers from all over the world.

If you would like to buy a yacht **El Pavica — FERRETTI YACHTS** or would like help answering any questions concerning purchasing, selling or chartering a yacht, please call **+1(954)274-4435**

TABLE OF CONTENTS

TABLE OF CONTENTS	2
SPECIFICATIONS	5
Overview	5
Basic Information	5
Dimensions	5
Speed, Capacities and Weight	6
Accommodations	6
Hull and Deck Information	6
Engine Information	6
PHOTOS	7
Image (1)	7
8511804_20221102084624437_1_XLARGE	7
8511804_20221102084745001_1_XLARGE	7
8511804_20221102084553478_1_XLARGE	7
8511804_20221102084835596_1_XLARGE	7
8511804_20221102084935913_1_XLARGE	7
8511804_20221102085031057_1_XLARGE	8
8511804_20221102085038187_1_XLARGE	8
8511804_20221102085053285_1_XLARGE	8
8511804_20221102085100783_1_XLARGE	8
8511804_20221102085107789_1_XLARGE	8
8511804_20221102085114456_1_XLARGE	8
8511804_20221102085127931_1_XLARGE	9
8511804_20221102085135548_1_XLARGE	9
8511804_20221102085142041_1_XLARGE	9
8511804_20221102085149350_1_XLARGE	9
8511804_20221102085158121_1_XLARGE	9
8511804_20221102085205204_1_XLARGE	9

8511804_20221102085220835_1_XLARGE	10
8511804_20221102085212632_1_XLARGE	10
8511804_20221102085228776_1_XLARGE	10
8511804_20221102085235435_1_XLARGE	10
8511804_20221102085239806_1_XLARGE	10
8511804_20221102085244078_1_XLARGE	10
8511804_20221102085249494_1_XLARGE	11
8511804_20221102085254879_1_XLARGE	11
8511804_20221102085301756_1_XLARGE	11
8511804_20221102085333264_1_XLARGE	11
8511804_20221102085348829_1_XLARGE	11
8511804_20221102085358355_1_XLARGE	11
8511804_20221102085410618_1_XLARGE	12
8511804_20221102085418290_1_XLARGE	12
8511804_20221102085434093_1_XLARGE	12
8511804_20221102085501498_1_XLARGE	12
8511804_20221102085531384_1_XLARGE	12
8511804_20221102085615237_1_XLARGE	12
8511804_20221102085624163_1_XLARGE	13
8511804_20221102085631809_1_XLARGE	13
8511804_20221102085654022_1_XLARGE	13
8511804_20221102085638781_1_XLARGE	13
8511804_20221102085719627_1_XLARGE	13
8511804_20221102085726521_1_XLARGE	13
8511804_20221102085733676_1_XLARGE	14
8511804_20221102085740311_1_XLARGE	14
8511804_20221102085747915_1_XLARGE	14
8511804_20221102085802890_1_XLARGE	14
8511804_20221102085754442_1_XLARGE	14

8511804_20221102085825922_1_XLARGE	14
7484731_20200703104020775_1_XLARGE	15
7484731_20200703104303845_1_XLARGE	15
7484731_20200703104335920_1_XLARGE	15
7484731_20200703104406488_1_XLARGE	15
CONTACTS	16
Contact details	16
Telephones	16
Office hours	16
Address	16

SPECIFICATIONS

Overview

The Ferretti 88 is an impeccable Italian designed flybridge motor yacht that exemplifies Ferretti's unparalleled commitment to raising the standard. Some of the most impressive features include the beach club with a large swim platform, a massive hardtop flybridge with a retractable cover and a decadent full-beam master stateroom layout with spectacular views from both sides. Equipped with twin MTU 16V 2030 engines, this vessel has the ability to maneuver very well and display exceptional performance on the water.

As you board the vessel, you immediately notice the spacious cockpit with ample space for entertainment. The cockpit flows into the main salon lined with large windows that offer plenty of natural lighting to provide a welcoming ambience. Moving forward, there is a formal dining area for those special gatherings around the table. The Galley is well-sized, very functional and has plenty of natural lighting. Next, you'll find the commodious main helm station that can accommodate both the captain and any guest who wishes to enjoy the view from the helm. As you continue down the spiral staircase, you will find the master state room, the VIP stateroom, and two mirrored state rooms (each with 3 bunks). Additionally, the crew quarters is accessed from the main cockpit and provides 2 state rooms, each with 2 berths and private heads. Furthermore the crew has a private kitchen and dining area, as well as access to both the engineer room and the engine room. Overall, the Ferretti 88 design was conceived to be a long-lasting ambassador of Italian style and is sure to leave a lasting impression. Welcome aboard!

El Pavica has been professionally managed, tastefully upgraded and is LLC owned.

Basic Information

Category: Motor Yacht

Model Year: 2006

Year Built: 2006

Country: N/A

Dimensions

LOA: 88' 3" (26.9mm)

Beam: 21.08

Max Draft: 7' (2.13mm)

Speed, Capacities and Weight

Cruise Speed: 20 Knots Kts. (23 MPH)

Max Speed: 25 Knots Kts. (29 MPH)

Water Capacity: 343 Gallons

Holding Tank: 214 Gal Gallons

Fuel Capacity: 2378 Gal Gallons

Accommodations

Total Cabins: 5

Total Heads: 7

Hull and Deck Information

Hull Material: Fiberglass

Hull Configuration: Deep Vee

Engine Information

Engines: 2

Manufacturer: MTU

Engine Type: Inboard

Fuel Type: Diesel

PHOTOS

Image (1)



8511804_20221102084624437_1_XLARGE



8511804_20221102084553478_1_XLARGE



8511804_20221102084745001_1_XLARGE



8511804_20221102084835596_1_XLARGE



8511804_20221102084935913_1_XLARGE



8511804_20221102085031057_1_XLARGE



8511804_20221102085038187_1_XLARGE



8511804_20221102085053285_1_XLARGE



8511804_20221102085100783_1_XLARGE



8511804_20221102085107789_1_XLARGE



8511804_20221102085114456_1_XLARGE



8511804_20221102085127931_1_XLARGE



8511804_20221102085135548_1_XLARGE



8511804_20221102085142041_1_XLARGE



8511804_20221102085149350_1_XLARGE



8511804_20221102085158121_1_XLARGE



8511804_20221102085205204_1_XLARGE



8511804_20221102085220835_1_XLARGE

8511804_20221102085212632_1_XLARGE



8511804_20221102085228776_1_XLARGE

8511804_20221102085235435_1_XLARGE



8511804_20221102085239806_1_XLARGE

8511804_20221102085244078_1_XLARGE



8511804_20221102085249494_1_XLARGE



8511804_20221102085254879_1_XLARGE



8511804_20221102085301756_1_XLARGE



8511804_20221102085333264_1_XLARGE



8511804_20221102085348829_1_XLARGE



8511804_20221102085358355_1_XLARGE



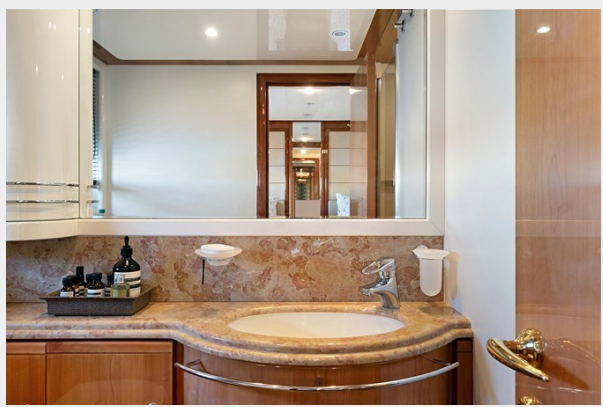
8511804_20221102085410618_1_XLARGE



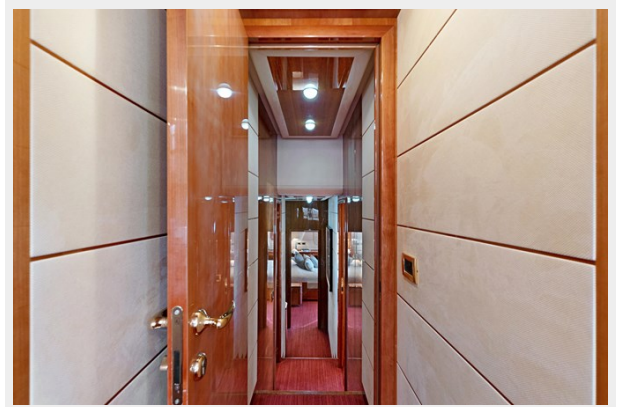
8511804_20221102085418290_1_XLARGE



8511804_20221102085434093_1_XLARGE



8511804_20221102085501498_1_XLARGE



8511804_20221102085531384_1_XLARGE



8511804_20221102085615237_1_XLARGE



8511804_20221102085624163_1_XLARGE

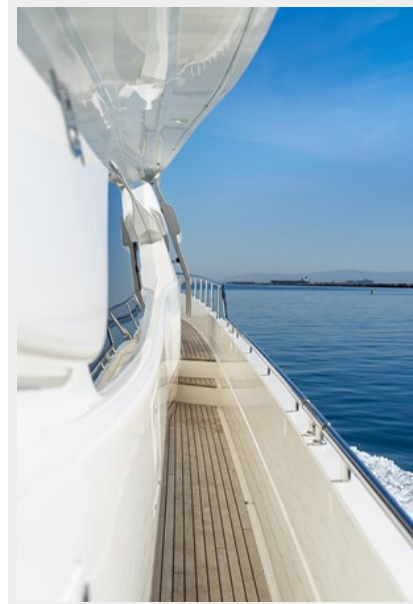


8511804_20221102085631809_1_XLARGE



8511804_20221102085654022_1_XLARGE

8511804_20221102085638781_1_XLARGE



8511804_20221102085719627_1_XLARGE



8511804_20221102085726521_1_XLARGE



8511804_20221102085733676_1_XLARGE



8511804_20221102085740311_1_XLARGE



8511804_20221102085747915_1_XLARGE



8511804_20221102085802890_1_XLARGE



8511804_20221102085754442_1_XLARGE



8511804_20221102085825922_1_XLARGE



7484731_20200703104020775_1_XLARGE



7484731_20200703104303845_1_XLARGE



7484731_20200703104335920_1_XLARGE



7484731_20200703104406488_1_XLARGE



CONTACTS

Andrey Shestakov, leading yacht broker of the sales department of Shestakov Yacht Sales Inc. Shestakov Yacht Sales Inc., the official representative of the Miami/Fort Lauderdale FL headquarters.

Contact details

Email: andrey@shestakovyachtsales.com

Web: shestakovyachtsales.com/en/

Telephones

USA: +1(954)274-4435

Office hours

Monday – Saturday: **9:00 - 21:00** EDT

Sunday: **closed**

Address



Harbour Towne Marina, 850 NE 3rd St,
STE 213, Dania, FL 33004