

FOUR ACES — CHEOY LEE



Builder: CHEOY LEE

Year Built: 1988

Model: Sport Fisherman

Price: PRICE ON APPLICATION

Location: N/A

LOA: 70' 10" (21.59mm)

Beam: 20.75

Min Draft: 5' 5" (1.65mm)

Max Draft: 6' (1.83mm)

Our experienced yacht broker, Andrey Shestakov, will help you choose and buy a yacht that best suits your needs **Four Aces — CHEOY LEE** from our catalogue. Presently, at Shestakov Yacht Sales Inc., we have a wide variety of yachts available on our sale's list. We also work in close contact with all the big yacht manufacturers from all over the world.

If you would like to buy a yacht **Four Aces — CHEOY LEE** or would like help answering any questions concerning purchasing, selling or chartering a yacht, please call **+1(954)274-4435**

TABLE OF CONTENTS

TABLE OF CONTENTS	2
SPECIFICATIONS	5
Basic Information	5
Dimensions	5
Speed, Capacities and Weight	5
Accommodations	5
Hull and Deck Information	5
Engine Information	5
PHOTOS	6
7853552_20210922110546531_1_XLARGE	6
7853552_20210922110617775_1_XLARGE	6
7853552_20210922110422719_1_XLARGE	6
7853552_20210922110417564_1_XLARGE	6
7853552_20210922110432817_1_XLARGE	6
7853552_20210922110438868_1_XLARGE	6
7853552_20210922110457080_1_XLARGE	7
7853552_20210922110511316_1_XLARGE	7
7853552_20210922110657164_1_XLARGE	7
7853552_20210922110459124_1_XLARGE	7
7853552_20210922110613797_1_XLARGE	7
7853552_20210922110453324_1_XLARGE	7
7853552_20210922110521324_1_XLARGE	8
7853552_20210922110527084_1_XLARGE	8
7853552_20210922110535335_1_XLARGE	8
7853552_20210922110619900_1_XLARGE	8
7853552_20210922110637835_1_XLARGE	8
7853552_20210922110416391_1_XLARGE	8
7853552_20210922110647159_1_XLARGE	9

7853552_20210922110444941_1_XLARGE	9
7853552_20210517082852529_1_XLARGE	9
7853552_20210517082832833_1_XLARGE	9
7853552_20210922110607577_1_XLARGE	9
7853552_20210922110420729_1_XLARGE	9
7853552_20210517082836740_1_XLARGE	10
7853552_20210922110501135_1_XLARGE	10
7853552_20210922110529373_1_XLARGE	10
7853552_20210922110559783_1_XLARGE	10
7853552_20210922110631955_1_XLARGE	10
7853552_20210922110625765_1_XLARGE	10
7853552_20210922110440804_1_XLARGE	11
7853552_20210922110519259_1_XLARGE	11
7853552_20210922110449034_1_XLARGE	11
7853552_20210922110533262_1_XLARGE	11
7853552_20210922110557604_1_XLARGE	11
7853552_20210922110629821_1_XLARGE	11
7853552_20210922110544605_1_XLARGE	12
7853552_20210922110517235_1_XLARGE	12
7853552_20210922110442920_1_XLARGE	12
7853552_20210922110628202_1_XLARGE	12
7853552_20210922110537417_1_XLARGE	12
7853552_20210922110623883_1_XLARGE	12
7853552_20210517082859404_1_XLARGE	13
7853552_20210922110525312_1_XLARGE	13
7853552_20210922110651145_1_XLARGE	13
7853552_20210922110601460_1_XLARGE	13
7853552_20210922110428217_1_XLARGE	13
7853552_20210922110436907_1_XLARGE	13

7853552_20210922110502959_1_XLARGE	14
7853552_20210922110531340_1_XLARGE	14
7853552_20210922110548549_1_XLARGE	14
7853552_20210922110605780_1_XLARGE	14
7853552_20210922110621844_1_XLARGE	14
7853552_20210922110505027_1_XLARGE	14
7853552_20210922110615838_1_XLARGE	15
7853552_20210922110555496_1_XLARGE	15
7853552_20210922110640074_1_XLARGE	15
7853552_20210922110455032_1_XLARGE	15
7853552_20210922110450827_1_XLARGE	15
7853552_20210922110609741_1_XLARGE	15
7853552_20210922110603590_1_XLARGE	16
7853552_20210922110636100_1_XLARGE	16
7853552_20210922110655121_1_XLARGE	16
CONTACTS	17
Contact details	17
Telephones	17
Office hours	17
Address	17

SPECIFICATIONS

Basic Information

Category: Sport Fisherman

Model Year: 1988

Year Built: 1988

Country: N/A

Dimensions

LOA: 70' 10" (21.59mm)

Beam: 20.75

Min Draft: 5' 5" (1.65mm)

Max Draft: 6' (1.83mm)

Speed, Capacities and Weight

Water Capacity: 699 Gallons

Holding Tank: 285 Gal Gallons

Fuel Capacity: 2000 Gal Gallons

Accommodations

Total Cabins: 4

Total Heads: 3

Hull and Deck Information

Hull Material: Fiberglass

Engine Information

Engines: 2

Manufacturer: Caterpillar

Engine Type: Inboard

Fuel Type: Diesel

PHOTOS

7853552_20210922110546531_1_XLARGE



7853552_20210922110617775_1_XLARGE



7853552_20210922110422719_1_XLARGE



7853552_20210922110417564_1_XLARGE



7853552_20210922110432817_1_XLARGE



7853552_20210922110438868_1_XLARGE



7853552_20210922110457080_1_XLARGE



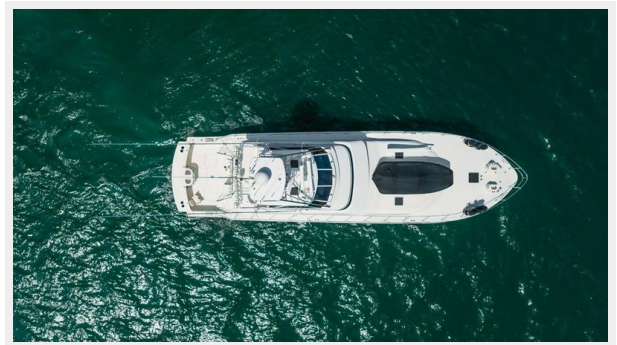
7853552_20210922110511316_1_XLARGE



7853552_20210922110657164_1_XLARGE



7853552_20210922110459124_1_XLARGE



7853552_20210922110613797_1_XLARGE



7853552_20210922110453324_1_XLARGE



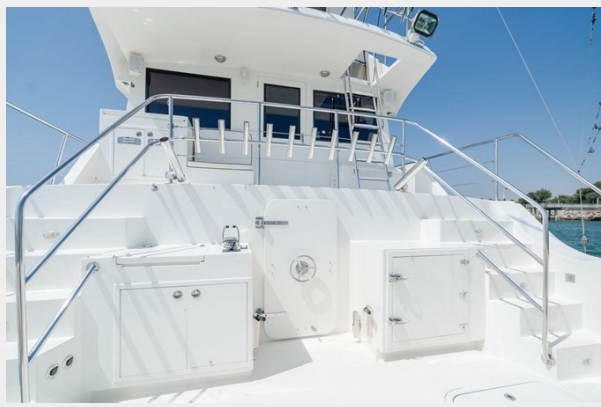
7853552_20210922110521324_1_XLARGE



7853552_20210922110527084_1_XLARGE



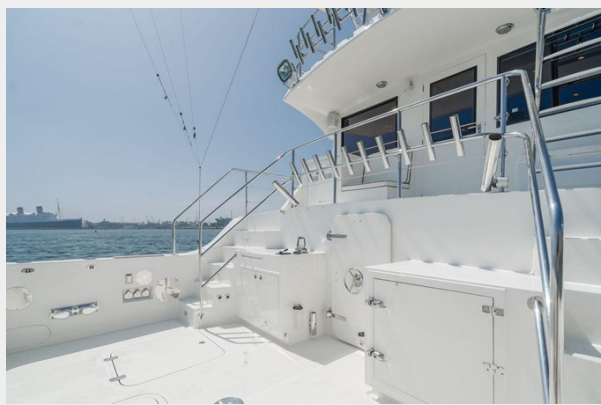
7853552_20210922110535335_1_XLARGE



7853552_20210922110619900_1_XLARGE



7853552_20210922110637835_1_XLARGE



7853552_20210922110416391_1_XLARGE



7853552_20210922110647159_1_XLARGE



7853552_20210922110444941_1_XLARGE



7853552_20210517082852529_1_XLARGE



7853552_20210517082832833_1_XLARGE



7853552_20210922110607577_1_XLARGE



7853552_20210922110420729_1_XLARGE



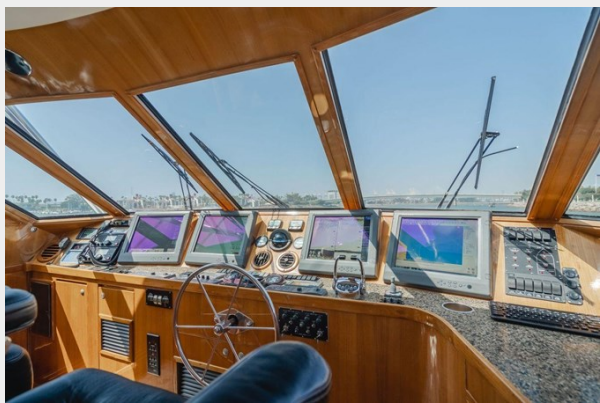
7853552_20210517082836740_1_XLARGE



7853552_20210922110501135_1_XLARGE



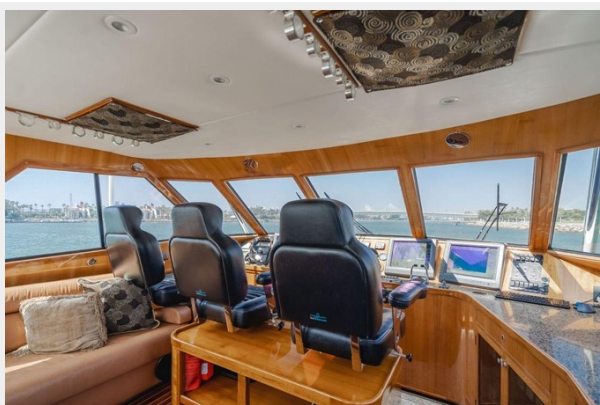
7853552_20210922110529373_1_XLARGE



7853552_20210922110559783_1_XLARGE



7853552_20210922110631955_1_XLARGE



7853552_20210922110625765_1_XLARGE



7853552_20210922110440804_1_XLARGE



7853552_20210922110519259_1_XLARGE



7853552_20210922110449034_1_XLARGE



7853552_20210922110533262_1_XLARGE



7853552_20210922110557604_1_XLARGE



7853552_20210922110629821_1_XLARGE



7853552_20210922110544605_1_XLARGE



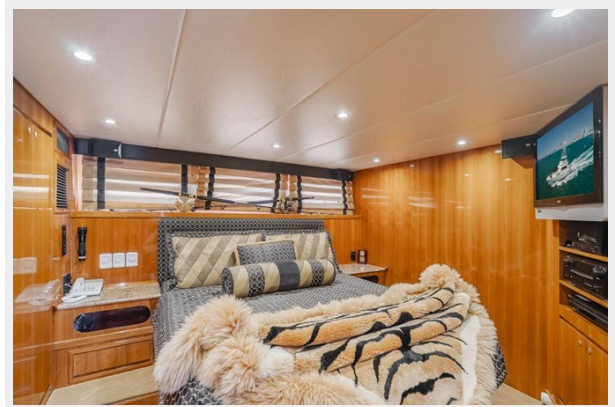
7853552_20210922110517235_1_XLARGE



7853552_20210922110442920_1_XLARGE



7853552_20210922110628202_1_XLARGE



7853552_20210922110537417_1_XLARGE



7853552_20210922110623883_1_XLARGE



7853552_20210517082859404_1_XLARGE



7853552_20210922110525312_1_XLARGE



7853552_20210922110651145_1_XLARGE

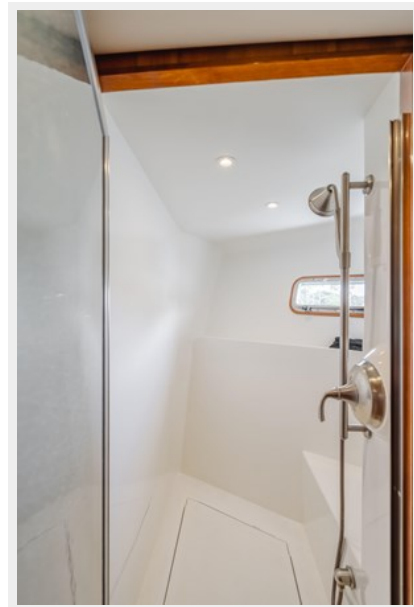


7853552_20210922110601460_1_XLARGE



7853552_20210922110428217_1_XLARGE

7853552_20210922110436907_1_XLARGE



7853552_20210922110502959_1_XLARGE



7853552_20210922110531340_1_XLARGE



7853552_20210922110548549_1_XLARGE



7853552_20210922110605780_1_XLARGE



7853552_20210922110621844_1_XLARGE



7853552_20210922110505027_1_XLARGE



7853552_20210922110615838_1_XLARGE



7853552_2021092211055496_1_XLARGE



7853552_20210922110640074_1_XLARGE



7853552_20210922110455032_1_XLARGE



7853552_20210922110450827_1_XLARGE



7853552_20210922110609741_1_XLARGE



7853552_20210922110603590_1_XLARGE



7853552_20210922110636100_1_XLARGE



7853552_20210922110655121_1_XLARGE



CONTACTS

Andrey Shestakov, leading yacht broker of the sales department of Shestakov Yacht Sales Inc. Shestakov Yacht Sales Inc., the official representative of the Miami/Fort Lauderdale FL headquarters.

Contact details

Email: andrey@shestakovyachtsales.com

Web: shestakovyachtsales.com/en/

Telephones

USA: +1(954)274-4435

Office hours

Monday – Saturday: **9:00 - 21:00** EDT

Sunday: **closed**

Address



Harbour Towne Marina, 850 NE 3rd St,
STE 213, Dania, FL 33004