

SPORTSMAN — LAZY DAYS MANUFACTURING CO



Builder:

LAZY DAYS MANUFACTURING CO

Year Built: 1984

Model: houseboat

Price: PRICE ON APPLICATION

Location: United States

LOA: 50' (15.24mm)

Beam: 14.5

Min Draft: 2' 10" (0.86mm)

Our experienced yacht broker, Andrey Shestakov, will help you choose and buy a yacht that best suits your needs **Sportsman — LAZY DAYS MANUFACTURING CO** from our catalogue. Presently, at Shestakov Yacht Sales Inc., we have a wide variety of yachts available on our sale's list. We also work in close contact with all the big yacht manufacturers from all over the world.

If you would like to buy a yacht **Sportsman — LAZY DAYS MANUFACTURING CO** or would like help answering any questions concerning purchasing, selling or chartering a yacht, please call **+1(954)274-4435**

TABLE OF CONTENTS

TABLE OF CONTENTS	2
SPECIFICATIONS	5
Overview	5
Basic Information	5
Dimensions	5
Speed, Capacities and Weight	5
Accommodations	6
Hull and Deck Information	6
Engine Information	6
PHOTOS	7
2	7
3	7
4	7
5	7
6	7
7	7
8	8
9	8
10	8
11	8
12	8
13	8
14	9
15	9
16	9
17	9
18	9
19	9

20	10
21	10
22	10
23	10
24	10
25	10
26	11
27	11
28	11
29	11
30	11
31	11
32	12
33	12
34	12
35	12
36	12
37	12
38	13
39	13
40	13
41	13
42	13
43	13
44	14
45	14
46	14
47	14
48	14

49	14
50	15
51	15
52	15
53	15
54	15
55	15
56	16
CONTACTS	17
Contact details	17
Telephones	17
Office hours	17
Address	17

SPECIFICATIONS

Overview

This 50 Lazy Days is preserved in a pleasing condition, offering an abundance of interior and exterior space! Throughout its lifespan, it has been a **Fresh Water** vessel.

Features include two state rooms, an expansive flybridge, spacious all-weather covered front veranda, a voluminous main living area, upper and lower helm stations equipped with complete controls and gauges, as well as a modernized galley. The ship comes **Furnished!**

The vessel is powered by Twin Volvos, a 6.5KW Onan generator, and a Honda Inverter.

This ship would serve excellently as a liveaboard, pleasure cruiser, or weekend getaway property. Currently, it's stationed off the scenic Waccamaw River which links to the Intracoastal Water Way.

Please consult the FULL SPECS section for comprehensive details and contact us to arrange a viewing at your earliest convenience!

Basic Information

Category: houseboat

Sub Category: Houseboat

Model Year: 1984

Year Built: 1984

Country: United States

Dimensions

LOA: 50' (15.24mm)

Beam: 14.5

Min Draft: 2' 10" (0.86mm)

Speed, Capacities and Weight

Water Capacity: 200 Gallons

Holding Tank: 110 Gal Gallons

Fuel Capacity: 145 Gal Gallons

Accommodations

Total Cabins: 3

Total Heads: 1

Hull and Deck Information

Hull Material: Aluminum

Engine Information

Engines: 2

Manufacturer: Volvo Penta

Engine Type: I/O

Fuel Type: Gas/Petrol

PHOTOS

2



3



4



5



6



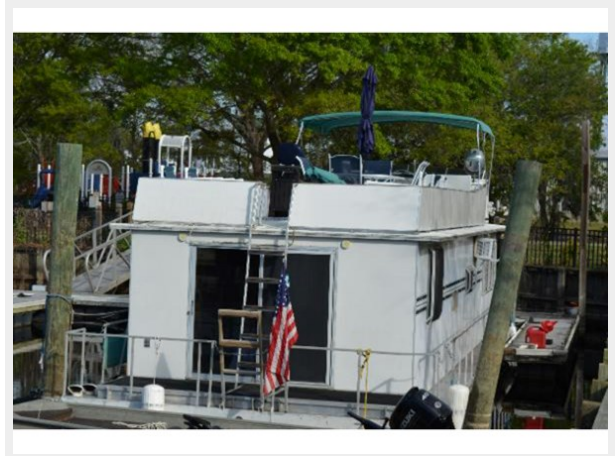
7



8



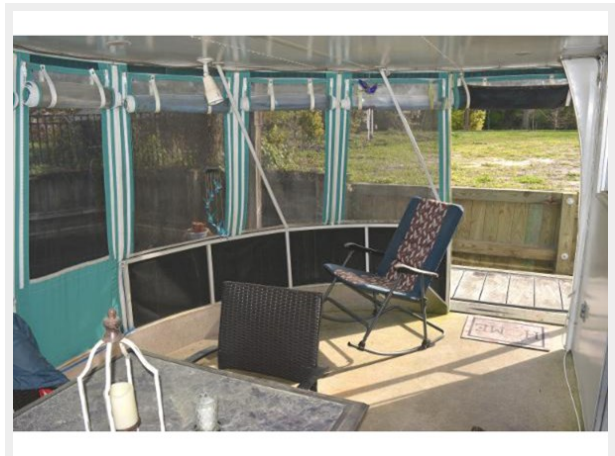
9



10



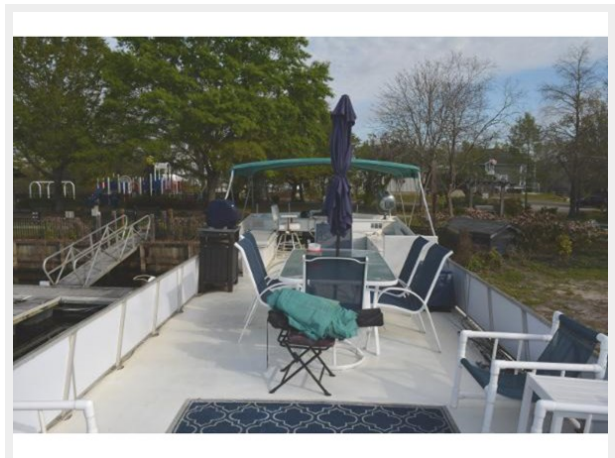
11



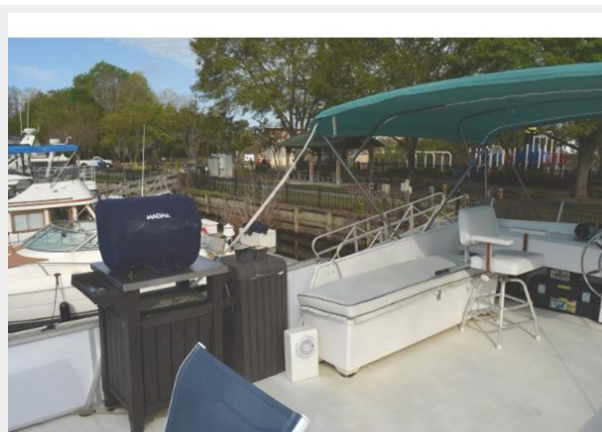
12



13



14



15



16



17



18



19



20



21



22



23



24



25



26



27



28



29



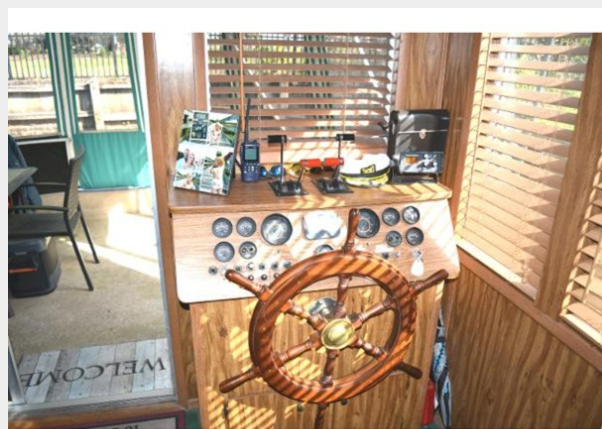
30



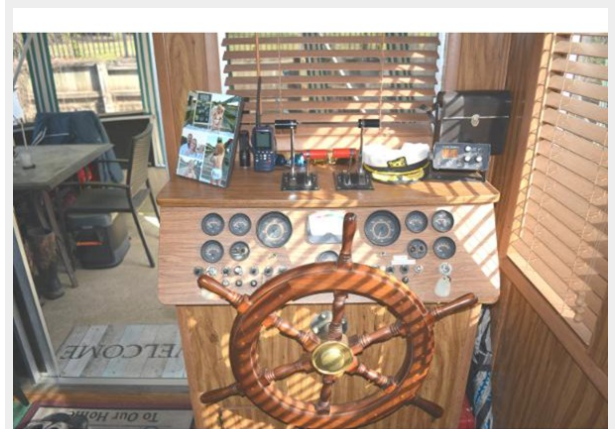
31



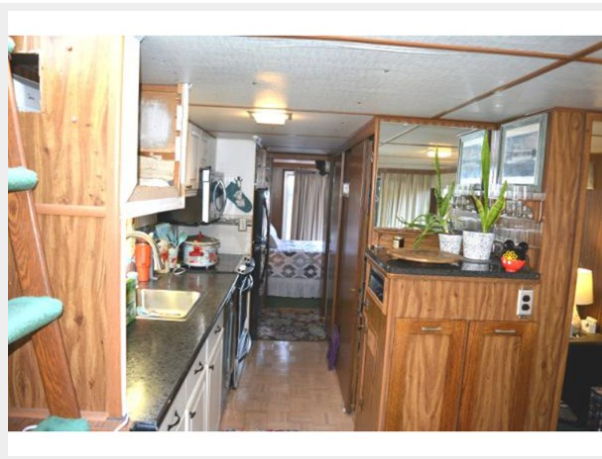
32



33



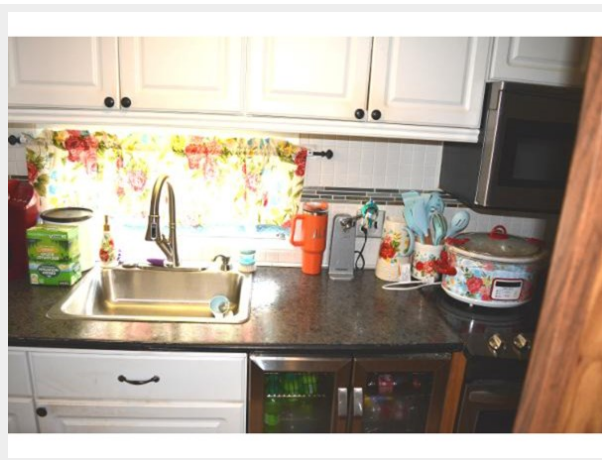
34



35



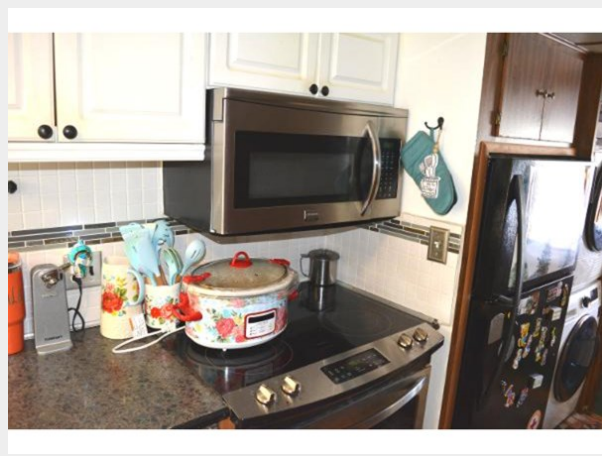
36



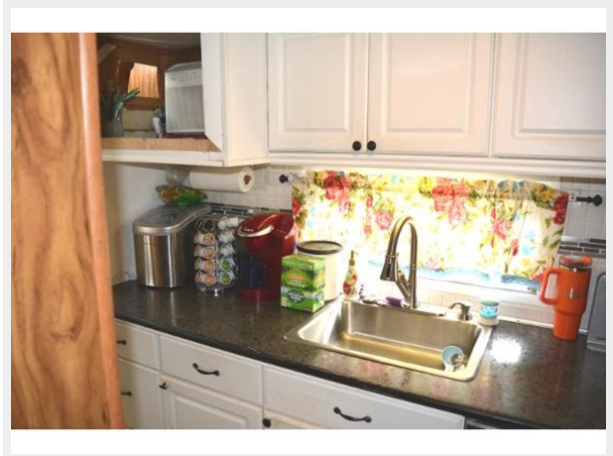
37



38



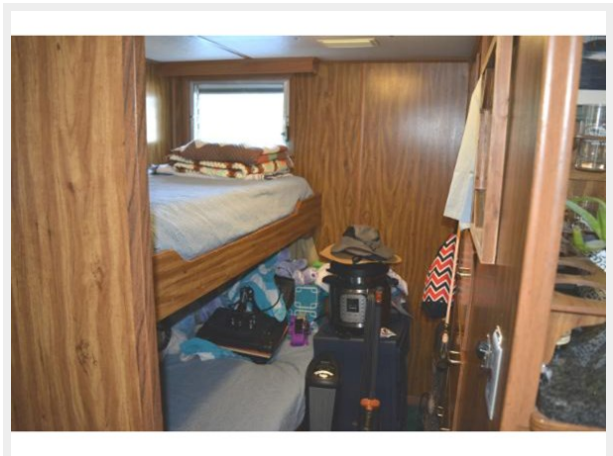
39



40



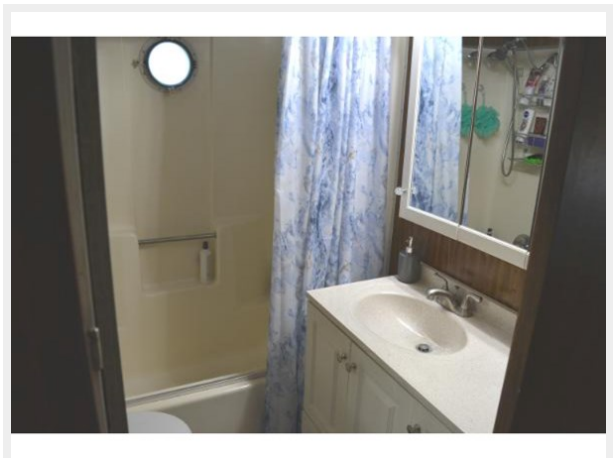
41



42



43



44



45



46



47



48



49



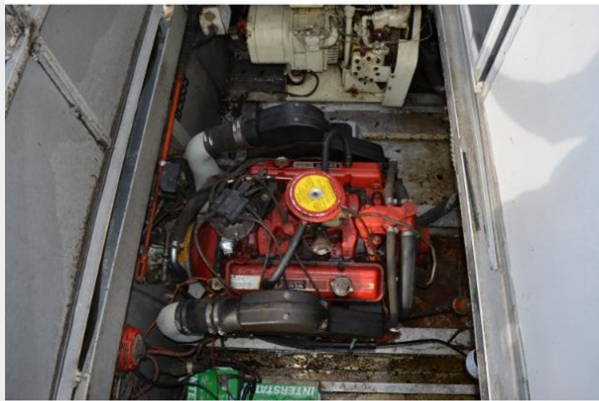
50



51



52



53



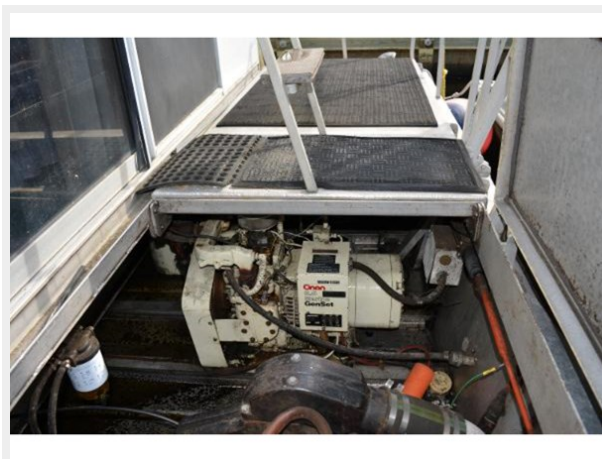
54



55



56



CONTACTS

Andrey Shestakov, leading yacht broker of the sales department of Shestakov Yacht Sales Inc. Shestakov Yacht Sales Inc., the official representative of the Miami/Fort Lauderdale FL headquarters.

Contact details

Email: **andrey@shestakovyachtsales.com**

Web: shestakovyachtsales.com/en/

Telephones

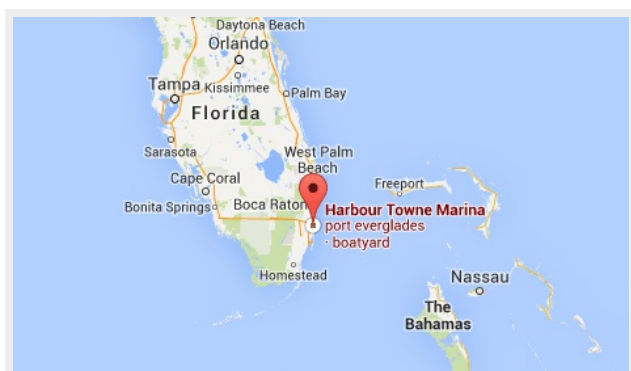
USA: **+1(954)274-4435**

Office hours

Monday – Saturday: **9:00 - 21:00 EDT**

Sunday: **closed**

Address



Harbour Towne Marina, 850 NE 3rd St,
STE 213, Dania, FL 33004