

## CHECKMATE — CUSTOM LINE



**Builder:** CUSTOM LINE

**Year Built:** 2022

**Model:** Motor Yacht

**Price:** €8,500,000 EUR

**Location:** Italy

**LOA:** 93' 7" (28.5mm)

**Beam:** 23.95

**Min Draft:** 6' 11" (2.1mm)

**Max Draft:** 7' 7" (2.3mm)

**Cruise Speed:** 12 Knots Kts. (14 MPH)

**Max Speed:** 13.5 Knots Kts. (16 MPH)

Our experienced yacht broker, Andrey Shestakov, will help you choose and buy a yacht that best suits your needs **CHECKMATE — CUSTOM LINE** from our catalogue. Presently, at Shestakov Yacht Sales Inc., we have a wide variety of yachts available on our sale's list. We also work in close contact with all the big yacht manufacturers from all over the world.

If you would like to buy a yacht **CHECKMATE — CUSTOM LINE** or would like help answering any questions concerning purchasing, selling or chartering a yacht, please call **+1(954)274-4435**

# TABLE OF CONTENTS

TABLE OF CONTENTS	2
SPECIFICATIONS	6
Overview	6
Basic Information	6
Dimensions	6
Speed, Capacities and Weight	7
Accommodations	7
Hull and Deck Information	7
Engine Information	7
PHOTOS	8
GW-DJI_0093-WEB	8
GW-DJI_0097-WEB	8
GW-DJI_0104-WEB	8
GW-DJI_0106-WEB	8
GW-DJI_0118-WEB	8
GW-DJI_0148-WEB	8
GW-DJI_0129-WEB	9
GW-DJI_0140-WEB	9
GW-DJI_0136-WEB	9
_GWZ7227-WEB	9
_GWZ7231-WEB	9
_GWZ7229-WEB	9
_GWZ7235-WEB	10
_GWZ7212-WEB	10
_GWZ7207-WEB	10
_GWZ7204-WEB	10
_GWZ7209-WEB	10
_GWZ7219-WEB	10

---

_GWZ7210-WEB	11
_GWZ7215-WEB	11
_GWZ7232-WEB	11
_GWZ7233-WEB	11
_GWZ6910-WEB	11
_GWZ6916-WEB	11
_GWZ6921-WEB	12
_GWZ6928-WEB	12
_GWZ6924-WEB	12
_GWZ7113-WEB	12
_GWZ7137-WEB	12
_GWZ7167-WEB	12
_GWZ7160-WEB	13
_GWZ7155-WEB	13
_GWZ6979-WEB	13
_GWZ6970-WEB	13
_GWZ6961-WEB	13
_GWZ6955-WEB	13
_GWZ6940-WEB	14
_GWZ6934-WEB	14
_GWZ6810-WEB	14
_GWZ6811-WEB	14
_GWZ6824-WEB	14
_GWZ6817-WEB	14
_GWZ6827-WEB	15
_GWZ6829-WEB	15
_GWZ6828-WEB	15
_GWZ6862-WEB	15
_GWZ6872-WEB	15

---

---

_GWZ6871-WEB	15
_GWZ6860-WEB	16
_GWZ6861-WEB	16
_GWZ6838-WEB	16
_GWZ6998-WEB	16
_GWZ7007-WEB	16
_GWZ7014-WEB	16
_GWZ7022-WEB	17
_GWZ7176-WEB	17
_GWZ7187-WEB	17
_GWZ7025-WEB	17
_GWZ7040-WEB	17
_GWZ7052-WEB	17
_GWZ6877-WEB	18
_GWZ7031-WEB	18
_GWZ6880-WEB	18
_GWZ6881-WEB	18
_GWZ6887-WEB	19
_GWZ6888-WEB	19
_GWZ6889-WEB	19
_GWZ6892-WEB	19
_GWZ6893-WEB	20
_GWZ6895-WEB	20
_GWZ6900-WEB	20
_GWZ7076-WEB	20
_GWZ7080-WEB	20
_GWZ7084-WEB	20
_GWZ7085-WEB	21
_GWZ7088-WEB	21

---

---

CONTACTS	22
-----	-----
Contact details	22
-----	-----
Telephones	22
-----	-----
Office hours	22
-----	-----
Address	22
-----	-----

# SPECIFICATIONS

---

## Overview

---

The Navetta 30 is the new superyacht in the Custom Line displacement range. The Navetta 30's wide-body configuration offers 3 decks – a major achievement for a yacht in this segment. This masterpiece of nautical art vaunts a spirit that is eager for the sea and generous external spaces that provide a haven for relaxation, contemplation and convivial good times. With large windows in the hull, over 2 metres of deck headroom and ample areas at both stern and bow, the Navetta 30 embraces the horizon with a panoramic open vista stretching in all directions. The main deck and the lower deck with the VIP cabins become spaces for savouring the sensation of it all, immersed in the allure of the blue. The upper-deck lunch area is a paean to sociable living, as is the glorious large sundeck that opens up to the endless sky.

## Basic Information

---

**Category:** Motor Yacht

**Sub Category:** Motor Yacht

**Model Year:** 2022

**Year Built:** 2022

**Country:** Italy

## Dimensions

---

**LOA:** 93' 7" (28.5mm)

**LWL:** 78' 6" (23.92mm)

**Beam:** 23.95

**Min Draft:** 6' 11" (2.1mm)

**Max Draft:** 7' 7" (2.3mm)

---

## Speed, Capacities and Weight

---

**Cruise Speed:** 12 Knots Kts. (14 MPH)

**Cruise Speed Range:** 1050

**Max Speed:** 13.5 Knots Kts. (16 MPH)

**Max Speed Range:** 980 Kts.

**Gross Tonnage:** 215 Pounds

**Water Capacity:** 3000 Gallons

**Holding Tank:** 317.01 Gal Gallons

**Fuel Capacity:** 3302.15 Gal Gallons

**Fuel Consumption:** 15.85 Gal Gallons

---

## Accommodations

---

**Total Cabins:** 5

**Total Berths:** 10

**Sleeps:** 10

**Total Heads:** 6

**Crew Cabin:** 5

**Crew Berths:** 4

**Crew Heads:** 3

---

## Hull and Deck Information

---

**Hull Material:** GRP

**Deck Material:** Teak

**Hull Configuration:** Semi-Displacement

**Hull Color:** white

**Hull Designer:** Ferretti Group

**Interior Designer:** Citterio-Viel

---

## Engine Information

---

**Engines:** 2

**Manufacturer:** MAN

**Engine Type:** Inboard

**Fuel Type:** Diesel



# PHOTOS

**GW-DJI\_0093-WEB**



**GW-DJI\_0097-WEB**



**GW-DJI\_0104-WEB**



**GW-DJI\_0106-WEB**



**GW-DJI\_0118-WEB**



**GW-DJI\_0148-WEB**





**GW-DJI\_0129-WEB**



**GW-DJI\_0140-WEB**



**GW-DJI\_0136-WEB**



**\_GWZ7227-WEB**



**\_GWZ7231-WEB**



**\_GWZ7229-WEB**



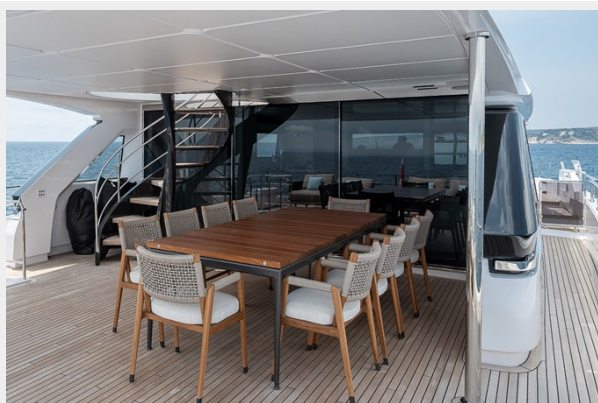
**\_GWZ7235-WEB**



**\_GWZ7212-WEB**



**\_GWZ7207-WEB**



**\_GWZ7204-WEB**



**\_GWZ7209-WEB**



**\_GWZ7219-WEB**





**\_GWZ7210-WEB**



**\_GWZ7215-WEB**



**\_GWZ7232-WEB**



**\_GWZ7233-WEB**



**\_GWZ6910-WEB**



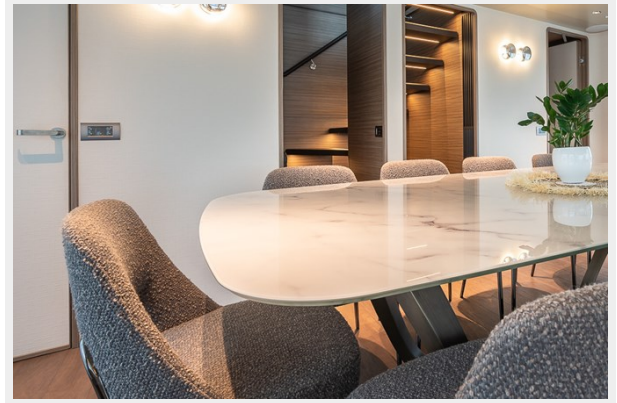
**\_GWZ6916-WEB**



**\_GWZ6921-WEB**



**\_GWZ6928-WEB**



**\_GWZ6924-WEB**



**\_GWZ7113-WEB**



**\_GWZ7137-WEB**



**\_GWZ7167-WEB**





**\_GWZ7160-WEB**



**\_GWZ7155-WEB**



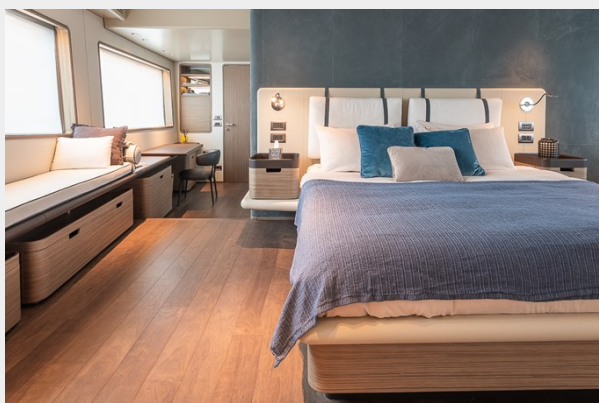
**\_GWZ6979-WEB**



**\_GWZ6970-WEB**



**\_GWZ6961-WEB**



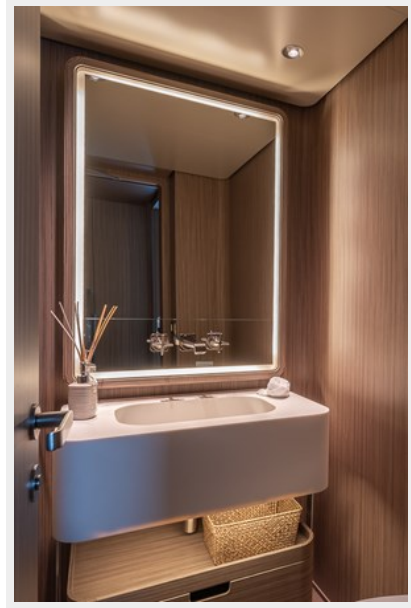
**\_GWZ6955-WEB**



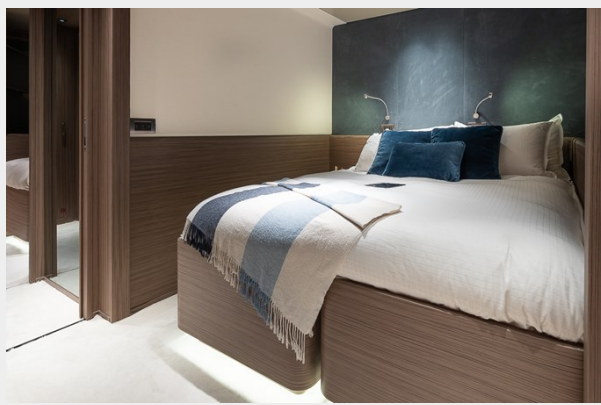
**\_GWZ6934-WEB**



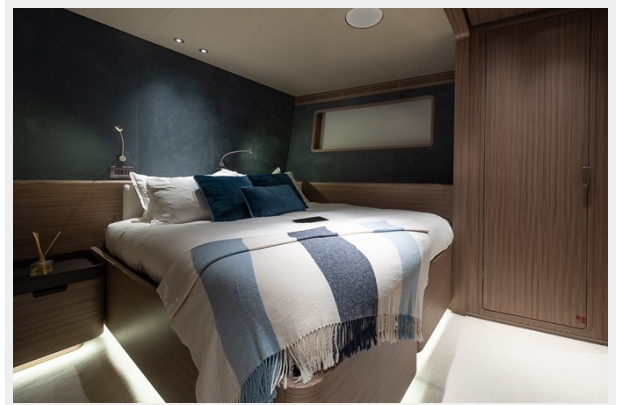
**\_GWZ6940-WEB**



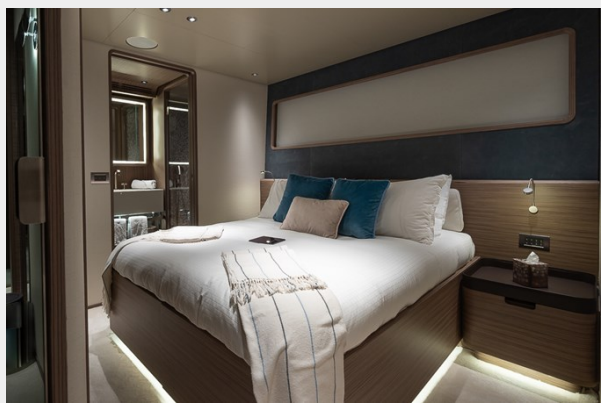
**\_GWZ6810-WEB**



**\_GWZ6811-WEB**



**\_GWZ6824-WEB**

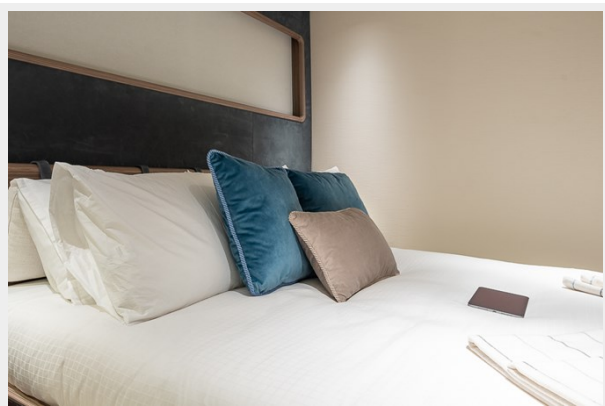


**\_GWZ6817-WEB**





**\_GWZ6827-WEB**



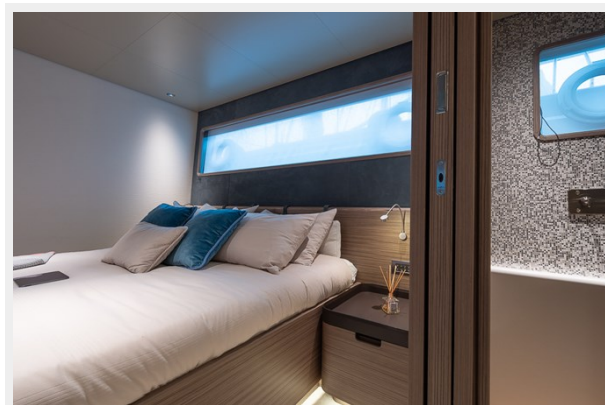
**\_GWZ6829-WEB**



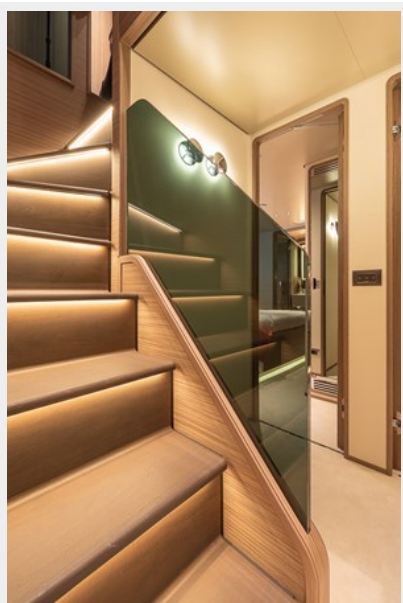
**\_GWZ6828-WEB**



**\_GWZ6862-WEB**



**\_GWZ6872-WEB**



**\_GWZ6871-WEB**





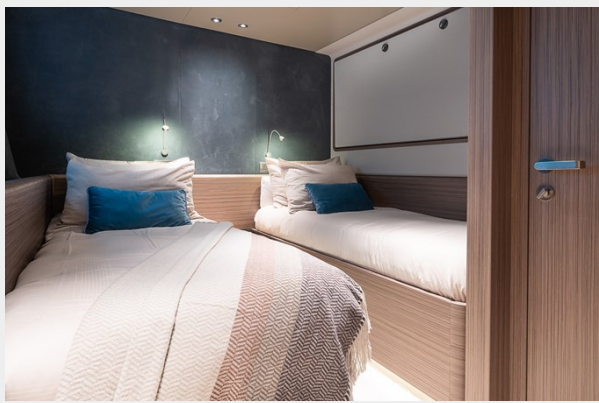
**\_GWZ6860-WEB**



**\_GWZ6861-WEB**



**\_GWZ6838-WEB**



**\_GWZ6998-WEB**



**\_GWZ7007-WEB**



**\_GWZ7014-WEB**



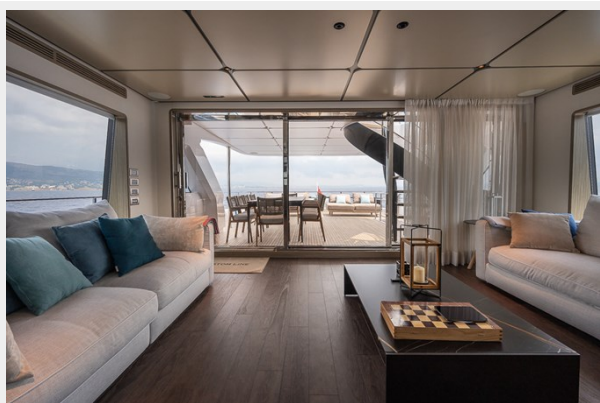
**\_GWZ7022-WEB**



**\_GWZ7176-WEB**



**\_GWZ7187-WEB**



**\_GWZ7025-WEB**



**\_GWZ7040-WEB**



**\_GWZ7052-WEB**





**\_GWZ7031-WEB**



**\_GWZ6877-WEB**



**\_GWZ6880-WEB**



**\_GWZ6881-WEB**



**\_GWZ6887-WEB**



**\_GWZ6888-WEB**



**\_GWZ6889-WEB**



**\_GWZ6892-WEB**





**\_GWZ6893-WEB**



**\_GWZ6895-WEB**



**\_GWZ6900-WEB**



**\_GWZ7076-WEB**



**\_GWZ7080-WEB**



**\_GWZ7084-WEB**



**\_GWZ7085-WEB**



**\_GWZ7088-WEB**



# CONTACTS

---

Andrey Shestakov, leading yacht broker of the sales department of Shestakov Yacht Sales Inc. Shestakov Yacht Sales Inc., the official representative of the Miami/Fort Lauderdale FL headquarters.

## Contact details

---

Email: [andrey@shestakovyachtsales.com](mailto:andrey@shestakovyachtsales.com)

Web: [shestakovyachtsales.com/en/](http://shestakovyachtsales.com/en/)

## Telephones

---

USA: +1(954)274-4435

## Office hours

---

Monday – Saturday: **9:00 - 21:00** EDT

Sunday: **closed**

## Address

---



Harbour Towne Marina, 850 NE 3rd St,  
STE 213, Dania, FL 33004