

BAD COMPANY SUPPORT — DAMEN YACHTING



Builder: DAMEN YACHTING

Year Built: 2019

Model: Shadow or Support Vessel

Price: PRICE ON APPLICATION

Location: United States

LOA: 149' 8" (45.62mm)

Beam: 27.25

Max Draft: 8' 9" (2.67mm)

Cruise Speed: 12 Knots Kts. (14 MPH)

Max Speed: 17 Knots Kts. (20 MPH)

Our experienced yacht broker, Andrey Shestakov, will help you choose and buy a yacht that best suits your needs **BAD COMPANY SUPPORT — DAMEN YACHTING** from our catalogue. Presently, at Shestakov Yacht Sales Inc., we have a wide variety of yachts available on our sale's list. We also work in close contact with all the big yacht manufacturers from all over the world.

If you would like to buy a yacht **BAD COMPANY SUPPORT — DAMEN YACHTING** or would like help answering any questions concerning purchasing, selling or chartering a yacht, please call **+1(954)274-4435**

TABLE OF CONTENTS

TABLE OF CONTENTS	2
SPECIFICATIONS	4
Overview	4
Basic Information	4
Dimensions	4
Speed, Capacities and Weight	5
Accommodations	5
Hull and Deck Information	5
Engine Information	5
PHOTOS	6
BAD COMPANY SUPPORT	6
BAD COMPANY SUPPORT	6
BAD COMPANY SUPPORT	6
BAD COMPANY SUPPORT	6
Bridge Deck	6
Main Deck	6
Main Deck	7
Main Deck	7
Salon	7
Salon	7
Master	7
Master	7
Guest Twin 2	8
Guest Twin 1	8
Bridge Deck	8
Bridge Deck Aft	8
Bridge Deck Aft	8
Crew Mess	8

Crew Mess	9
Tender	9
Tender & Toys	9
Tender & Toys	9
BAD COMPANY SUPPORT	9
BAD COMPANY SUPPORT	9
BAD COMPANY SUPPORT	10
BAD COMPANY SUPPORT	10
BAD COMPANY SUPPORT	10
BAD COMPANY SUPPORT	10
CONTACTS	11
Contact details	11
Telephones	11
Office hours	11
Address	11

SPECIFICATIONS

Overview

The 2019 149'8" Damen Yacht Support BAD COMPANY SUPPORT offers an extremely rare opportunity to purchase a proven and pedigreed world-traveling support vessel that is comfortably set up as a live-aboard, stand-alone yacht. Her current owner has had many successful fishing expeditions and is now looking forward to his new Damen that will be delivered in August.

Originally built as a support vessel, she has been modified to accommodate 6 guests in 3 well-appointed cabins. The interior is a great contrast to her functional and robust exterior. Every detail throughout is vibrant and colorful, alluding to the yacht's potential for fun. Forward on the main deck there is a master cabin with a queen bed and ensuite. Aft of the master are two twin cabins each with their own ensuite.

BAD COMPANY SUPPORT has excellent seakeeping capabilities, thanks to her wave-piercing Sea Axe bow & advanced Quantum zero-speed stabilizers. She has a heavy-duty crane that lifts up to 6.7 tons, so a variety of vessels and vehicles can be kept onboard, giving a broad range of possibilities for exploration. Not only can the main deck store a variety of items, this deck can also be used to host parties of all sizes, as a massive yoga studio or a gym, or even as a landing pad for helicopters.

Due to the shallow draft, BAD COMPANY SUPPORT has great exploration potential, as she can reach remote areas or areas that are inaccessible to other vessels of this size. She also has a range 5000 nm, so owners can get to more remote destinations. The yacht is in exceptional shape and turnkey ready for adventure

Basic Information

Category: Shadow or Support Vessel

Sub Category: Shadow or Support Vessel

Model Year: 2019

Year Built: 2019

Country: United States

Dimensions

LOA: 149' 8" (45.62mm)

LWL: 147' 8" (45.01mm)

Beam: 27.25

Max Draft: 8' 9" (2.67mm)

Speed, Capacities and Weight

Cruise Speed: 12 Knots Kts. (14 MPH)

Cruise Speed Range: 5000

Max Speed: 17 Knots Kts. (20 MPH)

Gross Tonnage: 309 Pounds

Water Capacity: 5533.88 Gallons

Holding Tank: 3533 Gal Gallons

Fuel Capacity: 24520.71 Gal Gallons

Accommodations

Crew Cabin: 7

Hull and Deck Information

Hull Material: Steel

Deck Material: Bolidt synthetic

Hull Configuration: Semi-Displacement

Hull Color: Grey

Hull Designer: Damen Yachting

Exterior Designer: Damen Yachting

Interior Designer: Damen Yachting

Engine Information

Engines: 2

Manufacturer: Caterpillar

Engine Type: Inboard

Fuel Type: Diesel

PHOTOS

BAD COMPANY SUPPORT



BAD COMPANY SUPPORT



BAD COMPANY SUPPORT



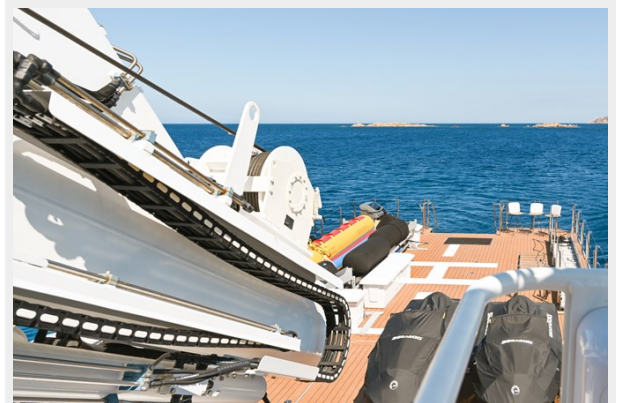
BAD COMPANY SUPPORT



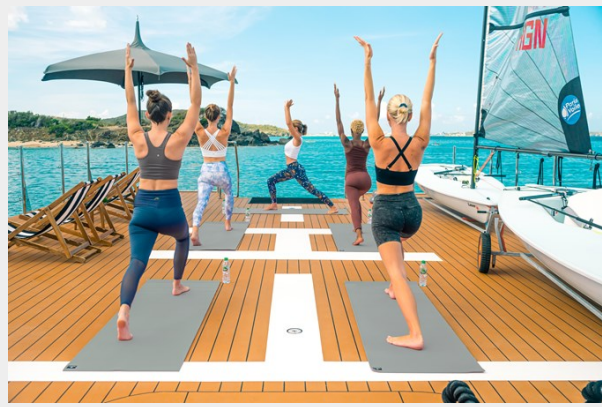
Bridge Deck



Main Deck



Main Deck



Main Deck



Salon



Salon



Master



Master



Guest Twin 1



Guest Twin 2



Bridge Deck



Bridge Deck Aft



Bridge Deck Aft



Crew Mess



Crew Mess



Tender



Tender & Toys



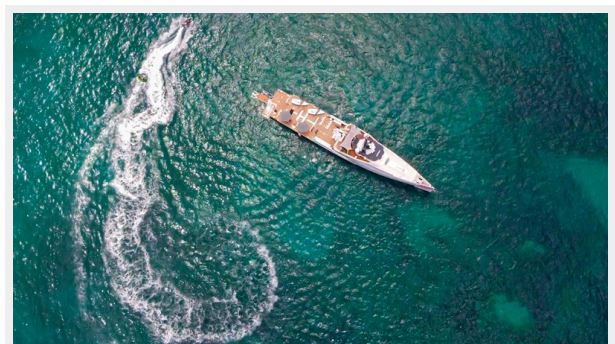
Tender & Toys



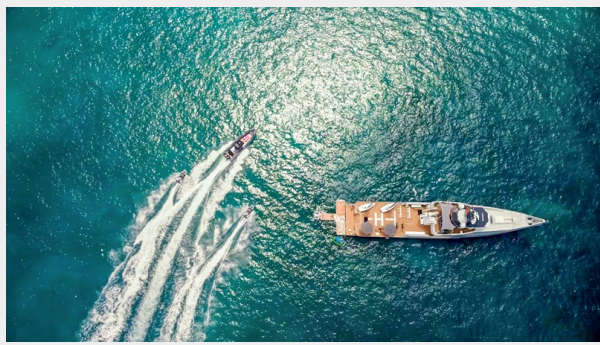
BAD COMPANY SUPPORT



BAD COMPANY SUPPORT



BAD COMPANY SUPPORT

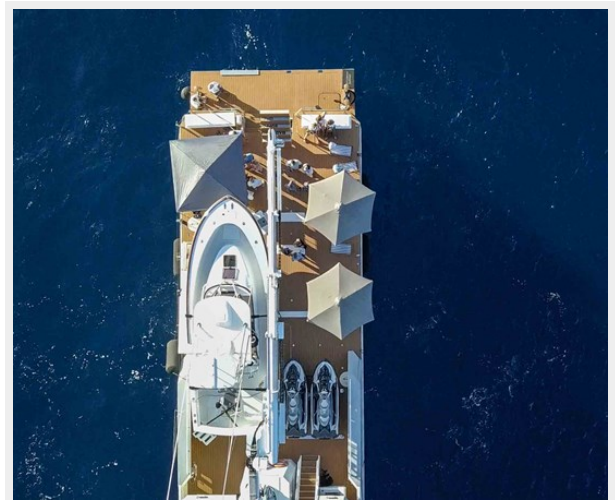
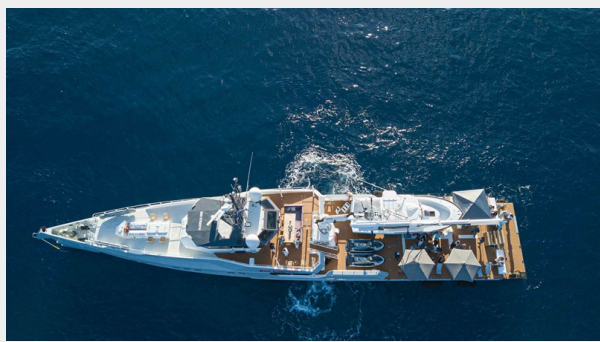


BAD COMPANY SUPPORT



BAD COMPANY SUPPORT

BAD COMPANY SUPPORT



CONTACTS

Andrey Shestakov, leading yacht broker of the sales department of Shestakov Yacht Sales Inc. Shestakov Yacht Sales Inc., the official representative of the Miami/Fort Lauderdale FL headquarters.

Contact details

Email: andrey@shestakovyachtsales.com

Web: shestakovyachtsales.com/en/

Telephones

USA: +1(954)274-4435

Office hours

Monday – Saturday: **9:00 - 21:00** EDT

Sunday: **closed**

Address



Harbour Towne Marina, 850 NE 3rd St,
STE 213, Dania, FL 33004