

LEGACY SUPERYACHT — LEGACY YACHTS



Builder: LEGACY YACHTS

Year Built: 2025

Model: Motor Yacht

Price: \$14,895,000 USD

Location: United States

LOA: 135' (41.15mm)

Beam: 25

Min Draft: 6' (1.83mm)

Max Draft: 7' (2.13mm)

Cruise Speed: 25 Knots Kts. (29 MPH)

Max Speed: 29 Knots Kts. (33 MPH)

Our experienced yacht broker, Andrey Shestakov, will help you choose and buy a yacht that best suits your needs **Legacy Superyacht — LEGACY YACHTS** from our catalogue. Presently, at Shestakov Yacht Sales Inc., we have a wide variety of yachts available on our sale's list. We also work in close contact with all the big yacht manufacturers from all over the world.

If you would like to buy a yacht **Legacy Superyacht — LEGACY YACHTS** or would like help answering any questions concerning purchasing, selling or chartering a yacht, please call **+1(954)274-4435**

TABLE OF CONTENTS

TABLE OF CONTENTS	2
SPECIFICATIONS	4
Overview	4
Basic Information	5
Dimensions	5
Speed, Capacities and Weight	5
Accommodations	5
Hull and Deck Information	5
Engine Information	5
PHOTOS	6
1	6
3	6
4	6
5	6
6	6
7	6
8	7
9	7
10	7
11	7
13	7
12	7
14	8
15	8
16	8
17	8
18	8
19	8

20	9
21	9
22	9
23	9
24	9
25	9
27	10
26	10
28	10
CONTACTS	11
Contact details	11
Telephones	11
Office hours	11
Address	11

SPECIFICATIONS

Overview

The L135' (41m) from US based Legacy Super Yachts is designed and engineered by leading American designers Joe Lazzara and Ian Ombres. Drawing on generations of innovation, this MTU powered aluminum yacht has an impressive top speed of 29 knots. Currently in build with 12 months till launch, she offers exceptional quality and world class design.

The interior has been created by Superyacht interior designer Alexandre Thiriat. Decorated with warm, rich tones using dark Indian rosewood, light and reconstituted oak and chenille with a hint of industrial design and Art Deco styling, an elegant and casual ambiance will run throughout all her guest areas. At this stage of construction the interior can be customized to fit the owners selections.

Key features include the walk-around top deck, a spacious flybridge deck with a Jacuzzi, a large beach club area or garage for tender, davit for 2 wave-runners on the bow, shallow draft of just under 6' and built to ABS A1 Commercial class. At 318 gross tons, considerable volume is offered throughout her spacious interior and open plan exterior decks with floor to ceiling glass in the main salon.

The L135' has a large main deck salon and formal dining area boast headroom at almost nine feet. A full size American galley with a large settee is ideal for entertaining family and guests. The spacious feel is further enhanced by three large glass sliding doors, which allow for panoramic views with a day head located off the galley. Legacy also offers a full-beam master stateroom forward on the main deck, which includes an office area with sea views, a king-size bed, a dressing room and a his-and-hers bathroom. Further accommodation is located on the lower deck comprising four VIP staterooms. The luxury yacht is also set up to carry 7 crew on board, located in the bow of the yacht.

Powered by twin MTU 12V 4000 M93L 3460 HP diesel engines, she will be propelled to a cruising speed of 25 knots and a maximum speed of 29 knots. The Hull has been tank tested and developed by naval architects Bill Prince & Ian Ombres to ensure exceptional seakeeping characteristics and efficiency. Almost all premium equipment and machinery systems suppliers are American for ease of service and maintenance.

Listed and managed exclusively through Denison Yachting and relying on decades of experience and expertise. Denison caters the management approach to the needs of each individual client. Delivering real-time solutions for the various challenges typically associated with operating a yacht, from financial management and crew administration to technical support and compliance. The mission is to be a key strategic partner between the owner and crew on board, enabling expectations to be exceeded at every level.

A complete 129 page builders spec & construction progress photos upon request.

Basic Information

Category: Motor Yacht

Sub Category: Motor Yacht

Model Year: 2025

Year Built: 2025

Country: United States

Dimensions

LOA: 135' (41.15mm)

Beam: 25

Min Draft: 6' (1.83mm)

Max Draft: 7' (2.13mm)

Speed, Capacities and Weight

Cruise Speed: 25 Knots Kts. (29 MPH)

Max Speed: 29 Knots Kts. (33 MPH)

Water Capacity: 2007 Gallons

Holding Tank: 818 Gal Gallons

Fuel Capacity: 8717 Gal Gallons

Accommodations

Total Cabins: 3

Hull and Deck Information

Hull Material: Fiberglass

Engine Information

Engines: 2

Manufacturer: Volvo Penta

Engine Type: Inboard

Fuel Type: Diesel

PHOTOS

1



3



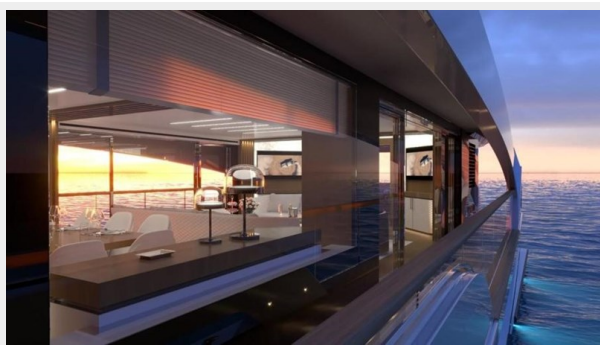
4



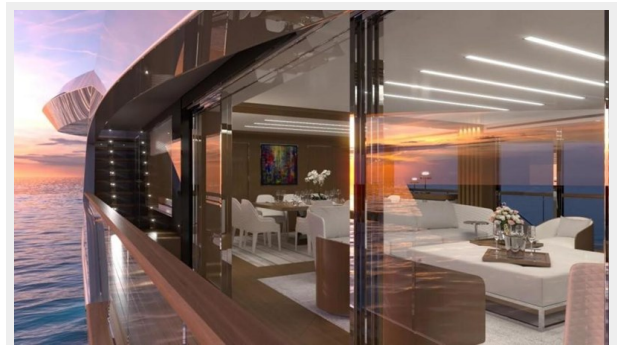
5



6



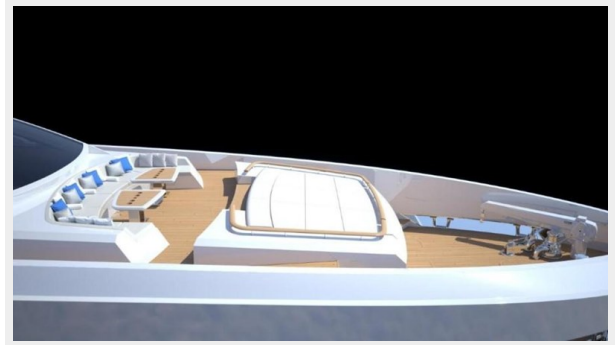
7



8



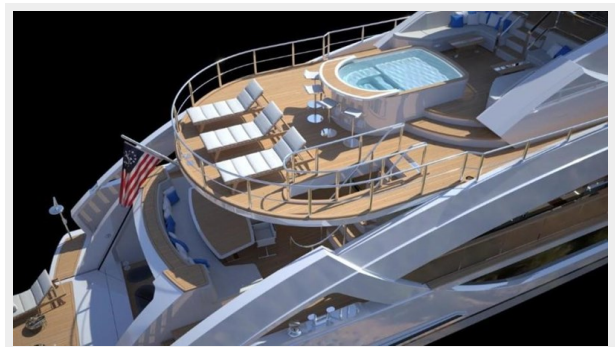
9



10



11



12



13



14



15



16



17



18



19



20



21



22



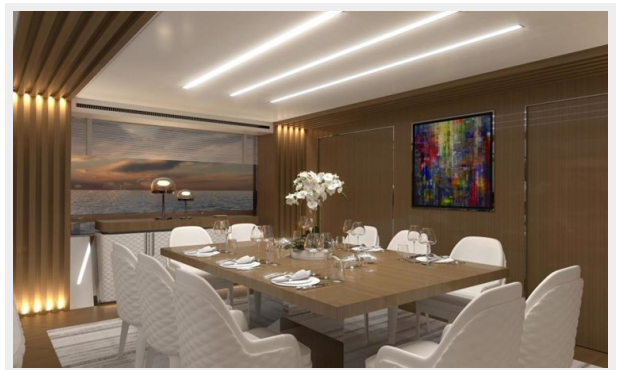
23



24



25



26



27



28



CONTACTS

Andrey Shestakov, leading yacht broker of the sales department of Shestakov Yacht Sales Inc. Shestakov Yacht Sales Inc., the official representative of the Miami/Fort Lauderdale FL headquarters.

Contact details

Email: andrey@shestakovyachtsales.com

Web: shestakovyachtsales.com/en/

Telephones

USA: +1(954)274-4435

Office hours

Monday – Saturday: **9:00 - 21:00** EDT

Sunday: **closed**

Address



Harbour Towne Marina, 850 NE 3rd St,
STE 213, Dania, FL 33004