

CHIN CHIN — EAST ASIA COMPOSITES



Builder: EAST ASIA COMPOSITES

Year Built: 2012

Model: Motor Yacht

Price: PRICE ON APPLICATION

Location: United States

LOA: 45' (13.72mm)

Beam: 18.58

Max Draft: 3' 4" (1.02mm)

Cruise Speed: 20 Knots Kts. (23 MPH)

Max Speed: 25 Knots Kts. (29 MPH)

Our experienced yacht broker, Andrey Shestakov, will help you choose and buy a yacht that best suits your needs **CHIN CHIN — EAST ASIA COMPOSITES** from our catalogue. Presently, at Shestakov Yacht Sales Inc., we have a wide variety of yachts available on our sale's list. We also work in close contact with all the big yacht manufacturers from all over the world.

If you would like to buy a yacht **CHIN CHIN — EAST ASIA COMPOSITES** or would like help answering any questions concerning purchasing, selling or chartering a yacht, please call **+1(954)274-4435**

TABLE OF CONTENTS

TABLE OF CONTENTS	2
SPECIFICATIONS	4
Overview	4
Basic Information	4
Dimensions	4
Speed, Capacities and Weight	4
Accommodations	4
Hull and Deck Information	5
Engine Information	5
PHOTOS	6
Salon	6
Salon	6
Salon	6
Salon	6
Helm	6
Helm	6
Helm	7
Galley	7
Galley	7
Galley	7
Stateroom	7
Stateroom	7
Stateroom	8
Head	8
Head	8
Aft Deck	8
Aft Deck	8
Aft Deck	8

Aft Deck	9
Engine Room	9
Engine Room	9
Engine Room	9
Engine Room	9
Profile	9
Profile	10
027 exterior	10
Profile	10
Profile	10
CONTACTS	11
Contact details	11
Telephones	11
Office hours	11
Address	11

SPECIFICATIONS

Overview

Motoryacht CHIN CHIN is a 45ft / 13.72m luxury yacht for sale, built and launched by yacht builder East Asia Composites. Delivered to a knowledgeable yacht owner in 2012, this luxury yacht sleeps up to 2 guests in 1 stateroom.

Basic Information

Category: Motor Yacht

Model Year: 2012

Year Built: 2012

Country: United States

Dimensions

LOA: 45' (13.72m)

Beam: 18.58

Max Draft: 3' 4" (1.02m)

Speed, Capacities and Weight

Cruise Speed: 20 Knots Kts. (23 MPH)

Cruise Speed Range: 340

Max Speed: 25 Knots Kts. (29 MPH)

Water Capacity: 150 Gallons

Holding Tank: 50 Gal Gallons

Fuel Capacity: 410 Gal Gallons

Accommodations

Total Cabins: 1

Total Berths: 1

Sleeps: 2

Total Heads: 2

Hull and Deck Information

Hull Material: Fiberglass

Engine Information

Engines: 2

Manufacturer: Volvo Penta

Fuel Type: Diesel

PHOTOS

Salon



Salon



Salon



Salon



Helm



Helm



Helm



Galley



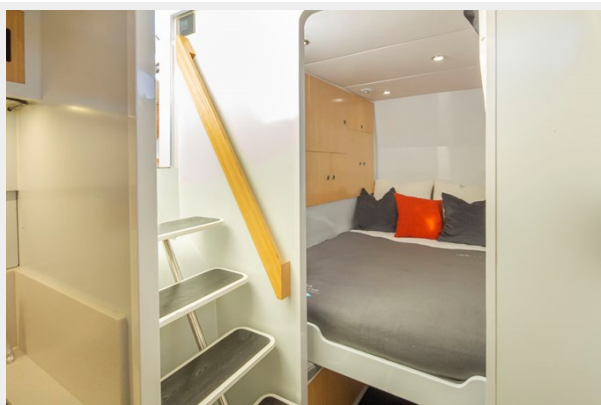
Galley



Galley



Stateroom



Stateroom



Stateroom



Head



Head



Aft Deck



Aft Deck



Aft Deck



Aft Deck



Engine Room



Engine Room



Engine Room



Engine Room



Profile



Profile



027 exterior



Profile



Profile



CONTACTS

Andrey Shestakov, leading yacht broker of the sales department of Shestakov Yacht Sales Inc. Shestakov Yacht Sales Inc., the official representative of the Miami/Fort Lauderdale FL headquarters.

Contact details

Email: andrey@shestakovyachtsales.com

Web: shestakovyachtsales.com/en/

Telephones

USA: +1(954)274-4435

Office hours

Monday – Saturday: **9:00 - 21:00** EDT

Sunday: **closed**

Address



Harbour Towne Marina, 850 NE 3rd St,
STE 213, Dania, FL 33004