

NUMARINE 45XP — NUMARINE



Builder: NUMARINE

Year Built: 2025

Model: expedition yacht

Price: PRICE ON APPLICATION

Location: Turkey

LOA: 147' 8" (45mm)

Beam: 30.34

Max Draft: 9' 4" (2.83mm)

Cruise Speed: 12 Knots Kts. (14 MPH)

Max Speed: 16 Knots Kts. (18 MPH)

Our experienced yacht broker, Andrey Shestakov, will help you choose and buy a yacht that best suits your needs **Numarine 45XP — NUMARINE** from our catalogue. Presently, at Shestakov Yacht Sales Inc., we have a wide variety of yachts available on our sale's list. We also work in close contact with all the big yacht manufacturers from all over the world.

If you would like to buy a yacht **Numarine 45XP — NUMARINE** or would like help answering any questions concerning purchasing, selling or chartering a yacht, please call **+1(954)274-4435**

TABLE OF CONTENTS

TABLE OF CONTENTS	2
SPECIFICATIONS	3
Overview	3
Basic Information	3
Dimensions	4
Speed, Capacities and Weight	4
Accommodations	4
Hull and Deck Information	4
Engine Information	5
PHOTOS	6
CONTACTS	8
Contact details	8
Telephones	8
Office hours	8
Address	8

SPECIFICATIONS

Overview

The 45XP is the flagship in Numarine's successful explorer range of yachts.

Since introducing the XP series Numarine has expanded their line of explorer yachts to include the following models: 22XP - 26XP - 32Xp - 37XP with the 45XP being the flagship.

Delivery can be completed in 24-26 months from the time contracts are finalized so a very aggressive delivery schedule which makes her one of the most attractive options in the 45m range on the market today.

Key Highlights:

- Private owner ensuite located forward on the main deck complete with private exterior deck featuring 2 balconies and a jacuzzi with waterfall
- Massive boat deck large enough to accommodate up to a 10m tender, 3 full size jet skis and endless water-sports equipment
- Sundeck with hard top, upper helm, lounge area and jacuzzi
- Designated beach club with full bar, lounge area, bath, storage for dive gear
- Shore power converters
- Zero speed stabilizers
- Full displacement steel hull with composite superstructure
- Impressive 4,500nm range

Full technical details and general arrangement available upon request.

When comparing the gross tonnage of 499 GRT, quality and design features the 45XP easily represents excellent value.

Basic Information

Category: expedition yacht

Sub Category: Expedition or Explorer

Model Year: 2025

Year Built: 2025

Country: Turkey

Dimensions

LOA: 147' 8" (45mm)

Beam: 30.34

Max Draft: 9' 4" (2.83mm)

Speed, Capacities and Weight

Cruise Speed: 12 Knots Kts. (14 MPH)

Cruise Speed Range: 4500

Max Speed: 16 Knots Kts. (18 MPH)

Gross Tonnage: 499 Pounds

Water Capacity: 6000 Gallons

Holding Tank: 528.34 Gal Gallons

Fuel Capacity: 11887.74 Gal Gallons

Accommodations

Total Cabins: 6

Sleeps: 12

Total Heads: 7

Crew Cabin: 9

Crew Heads: 5

Hull and Deck Information

Hull Material: Steel

Deck Material: Teak over Fiberglass

Hull Configuration: Displacement w/
Bulbous Bow

Hull Color: Custom as per the Client's
Request

Hull Designer: Umberto Tagliavini

Exterior Designer: Can Yalman

Interior Designer: Can Yalman & Esra
Kazmirci

Engine Information

Engines: 2

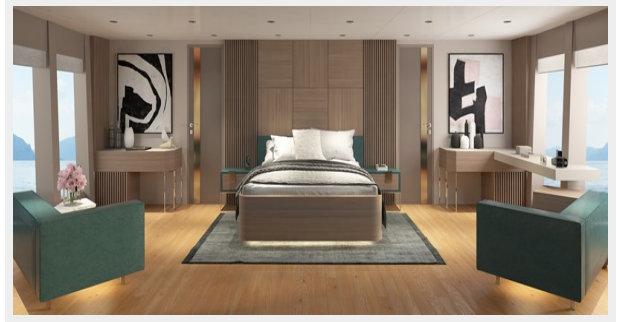
Manufacturer: CAT

Engine Type: Inboard

Fuel Type: Diesel

PHOTOS





CONTACTS

Andrey Shestakov, leading yacht broker of the sales department of Shestakov Yacht Sales Inc. Shestakov Yacht Sales Inc., the official representative of the Miami/Fort Lauderdale FL headquarters.

Contact details

Email: andrey@shestakovyachtsales.com

Web: shestakovyachtsales.com/en/

Telephones

USA: +1(954)274-4435

Office hours

Monday – Saturday: **9:00 - 21:00** EDT

Sunday: **closed**

Address



Harbour Towne Marina, 850 NE 3rd St,
STE 213, Dania, FL 33004