

3672 EXPRESS CRUISER — CRUISERS YACHTS



Builder: CRUISERS YACHTS

Year Built: 2001

Model: cruiser

Price: PRICE ON APPLICATION

Location: United States

LOA: 40' 2" (12.24mm)

Beam: 13

Max Draft: 3' (0.91mm)

Cruise Speed: 16 Knots Kts. (18 MPH)

Max Speed: 28 Knots Kts. (32 MPH)

Our experienced yacht broker, Andrey Shestakov, will help you choose and buy a yacht that best suits your needs 3672 Express Cruiser — CRUISERS YACHTS from our catalogue. Presently, at Shestakov Yacht Sales Inc., we have a wide variety of yachts available on our sale's list. We also work in close contact with all the big yacht manufacturers from all over the world.

If you would like to buy a yacht 3672 Express Cruiser — CRUISERS YACHTS or would like help answering any questions concerning purchasing, selling or chartering a yacht, please call +1(954)274-4435

TABLE OF CONTENTS

TABLE OF CONTENTS	2
SPECIFICATIONS	4
Overview	4
Basic Information	4
Dimensions	4
Speed, Capacities and Weight	4
Accommodations	5
Hull and Deck Information	5
Engine Information	5
PHOTOS	6
2	6
3	6
4	6
5	6
6	6
7	6
8	7
9	7
10	7
11	7
12	7
13	7
14	8
15	8
16	8
17	8
18	8
19	8

20	9
21	9
22	9
23	9
24	9
25	9
26	10
27	10
28	10
29	10
30	10
31	10
32	11
33	11
34	11
35	11
36	11
37	11
38	12
39	12
40	12
CONTACTS	13
Contact details	13
Telephones	13
Office hours	13
Address	13

SPECIFICATIONS

Overview

The 3672 Express is a very functional model from Cruisers Yachts. Just over 40' LOA, this roomy inboard cruiser is large enough for the entire family to enjoy some extended time onboard. The single stateroom layout also has a mid-ship dinette table that converts to a berth, as well as an aft sofa that converts to a double bed in seconds. High gloss cherry cabinetry throughout, roomy salon and galley, with cooktop, refrigerator, microwave and generous storage space. Spacious head with vac-flush system, Corian style countertop, and separate shower stall. Large aft cockpit with plenty of comfortable seating and a removable cocktail table that converts to a filler cushion for lounging. Upper helm deck with bench seat and walk-thru windshield for easy access for line handling.

Basic Information

Category: cruiser

Sub Category: Express

Model Year: 2001

Year Built: 2001

Country: United States

Dimensions

LOA: 40' 2" (12.24mm)

Beam: 13

Max Draft: 3' (0.91mm)

Speed, Capacities and Weight

Cruise Speed: 16 Knots Kts. (18 MPH)

Max Speed: 28 Knots Kts. (32 MPH)

Water Capacity: 70 Gallons

Holding Tank: 55 Gal Gallons

Fuel Capacity: 300 Gal Gallons

Accommodations

Total Cabins: 1

Total Heads: 1

Hull and Deck Information

Hull Material: Fiberglass

Engine Information

Engines: 2

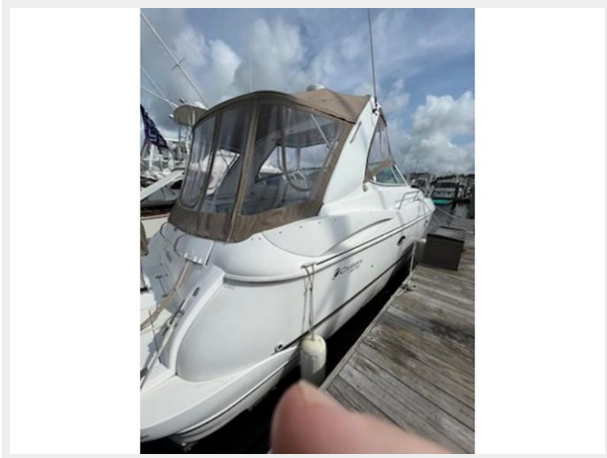
Manufacturer: Crusader

Engine Type: Inboard

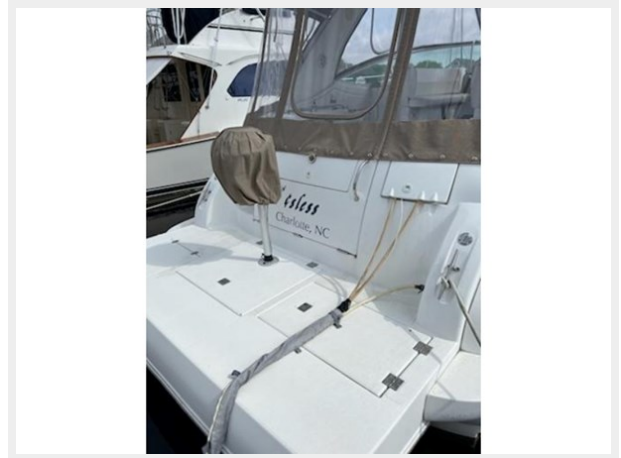
Fuel Type: Gas/Petrol

PHOTOS

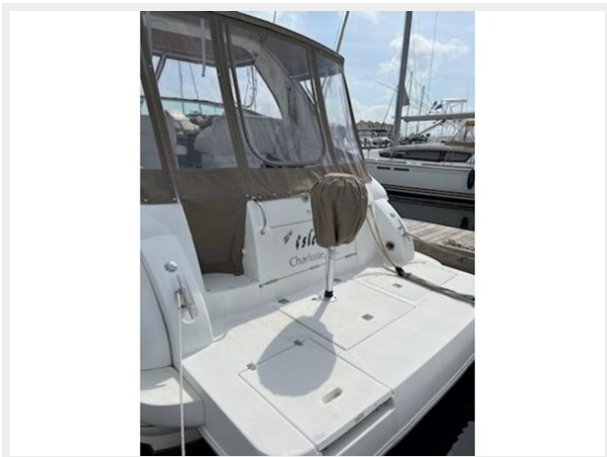
2



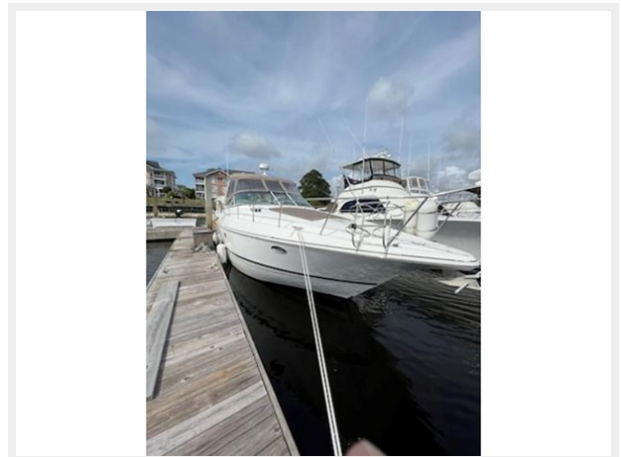
3



4



5



6



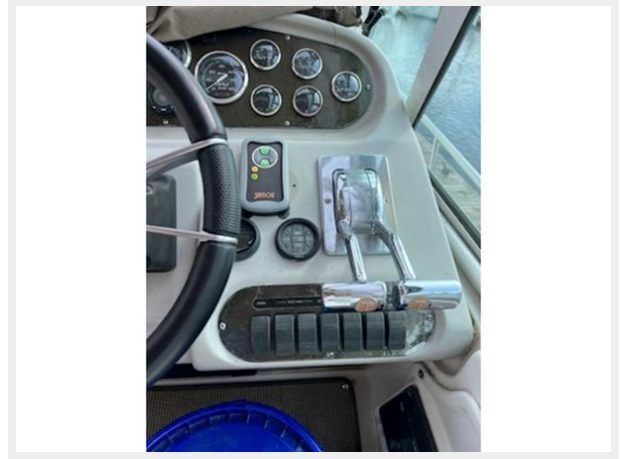
7



8



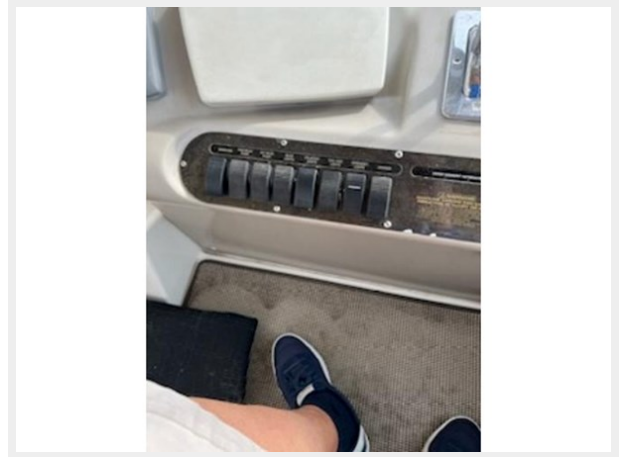
9



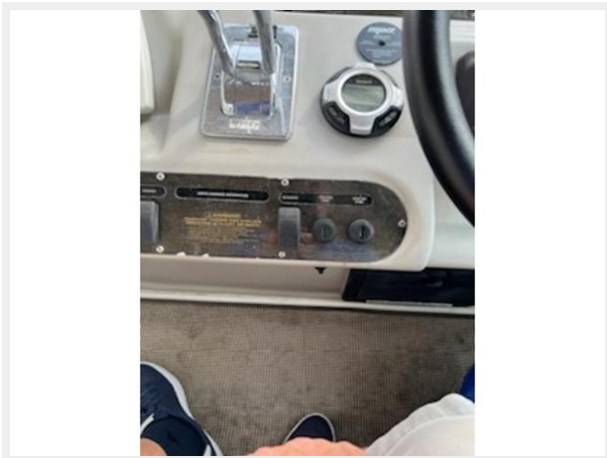
10



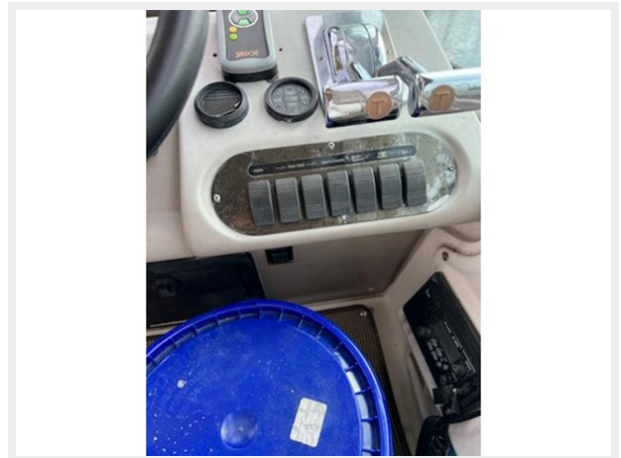
11



12



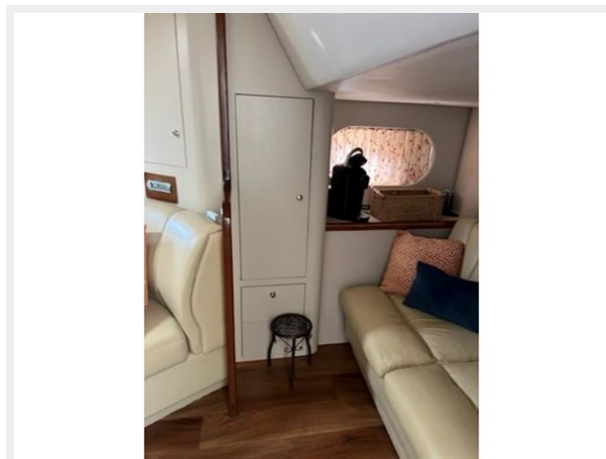
13



14



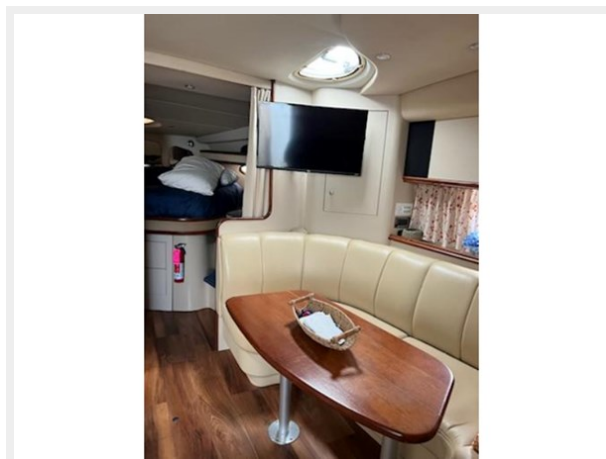
15



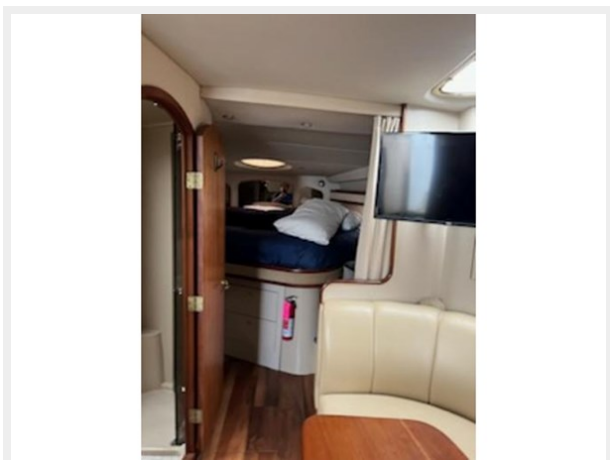
16



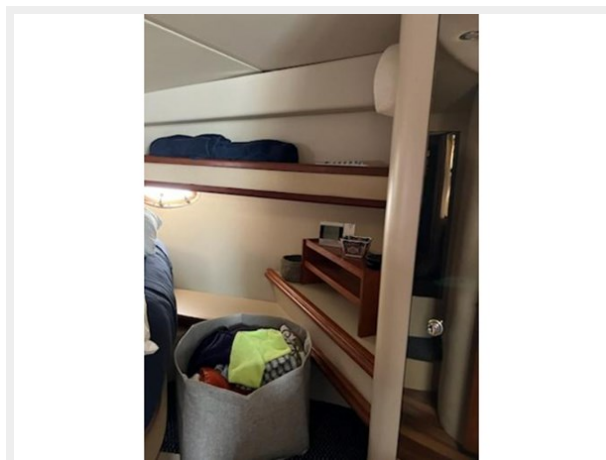
17



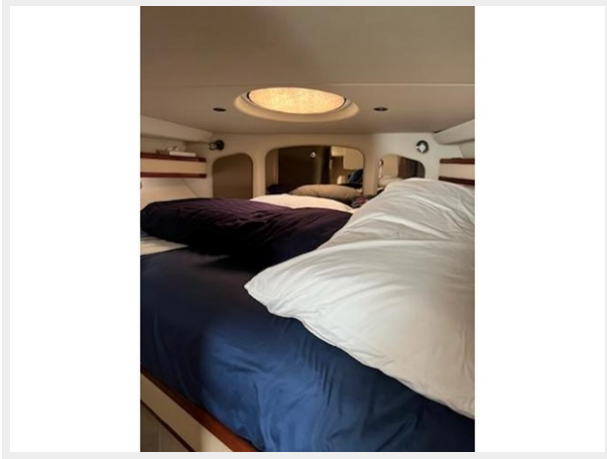
18



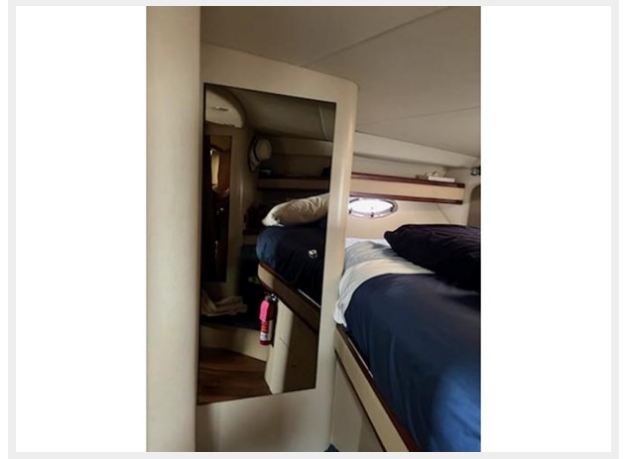
19



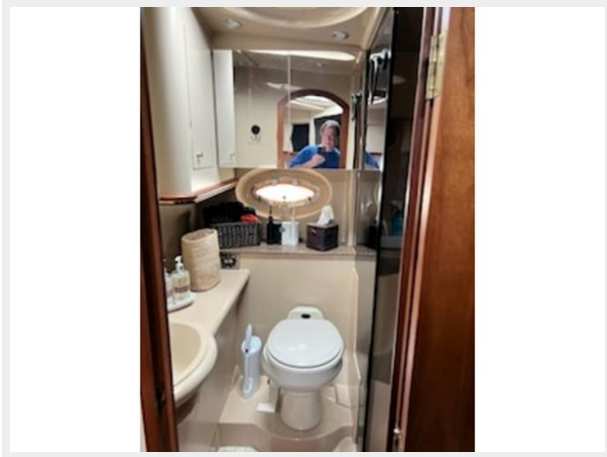
20



21



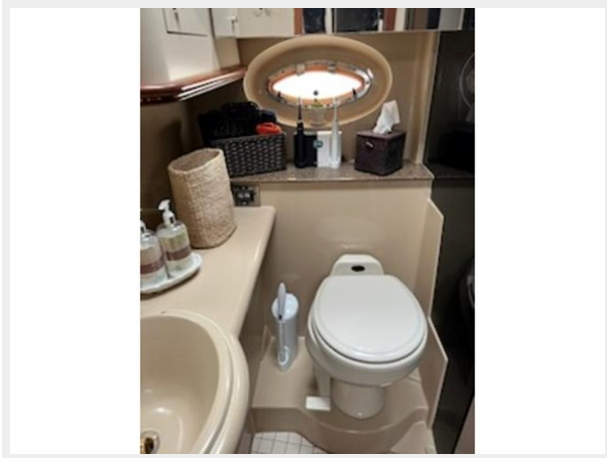
22



23



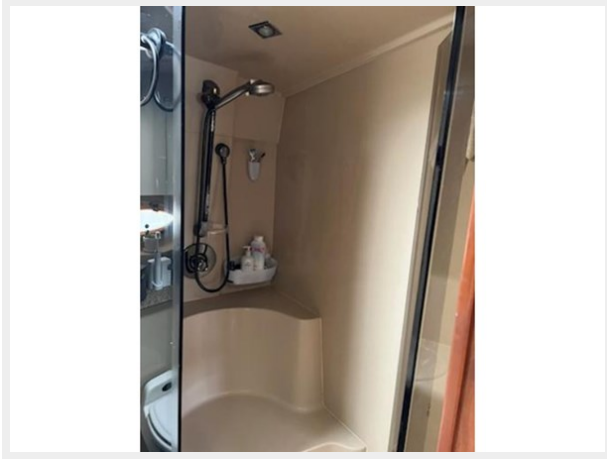
24



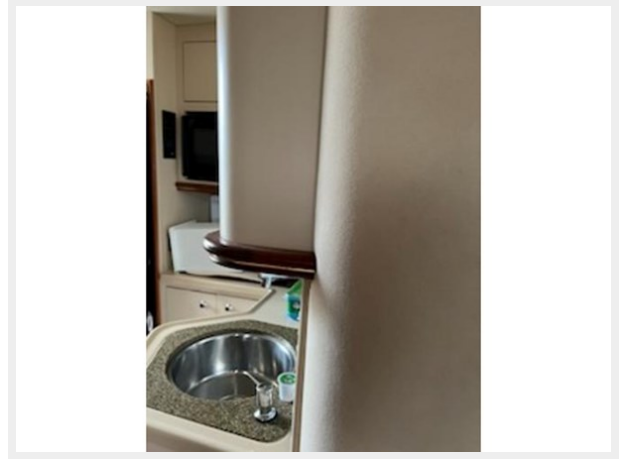
25



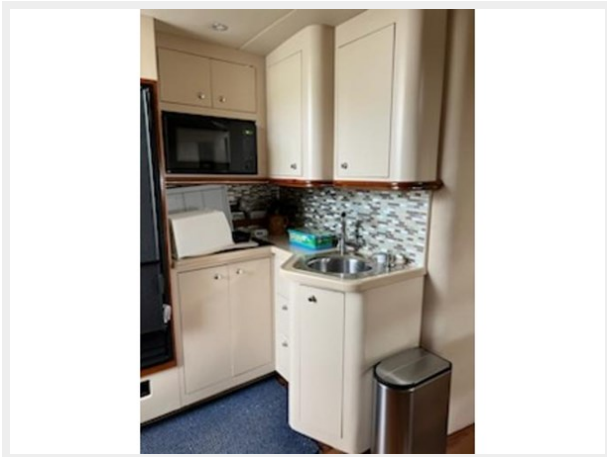
26



27



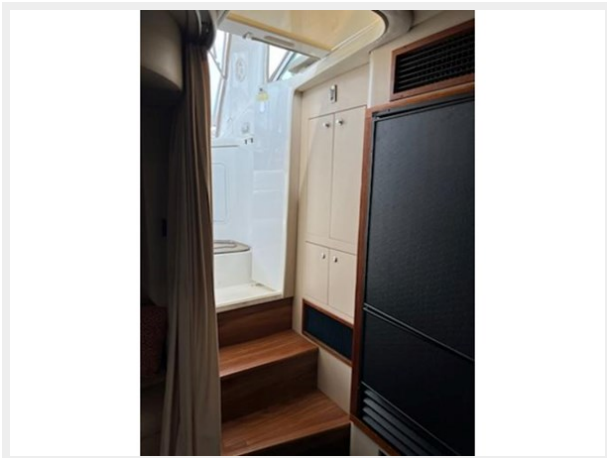
28



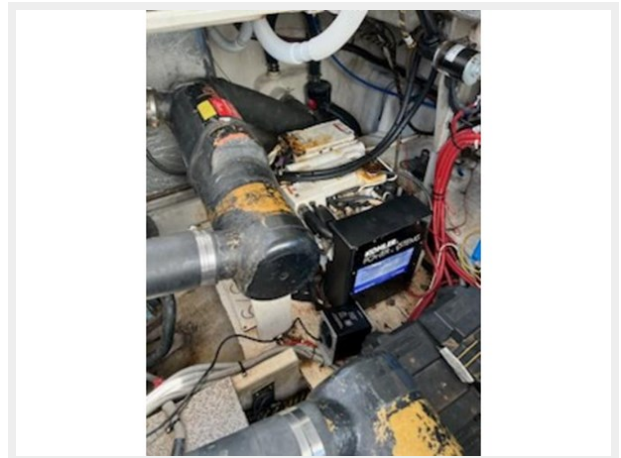
29



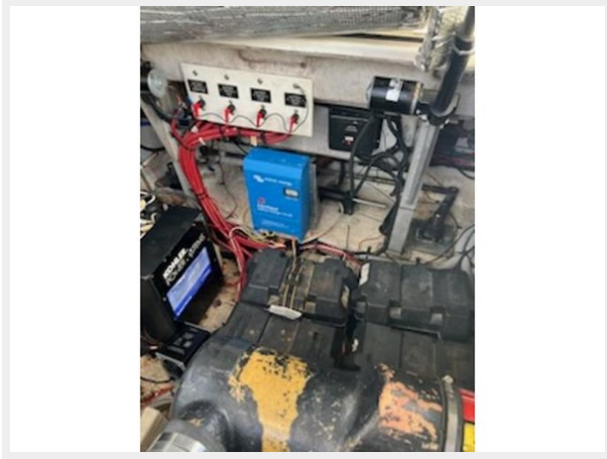
30



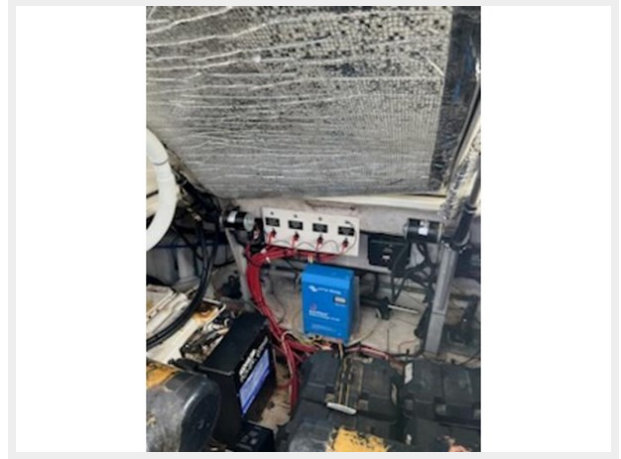
31



32



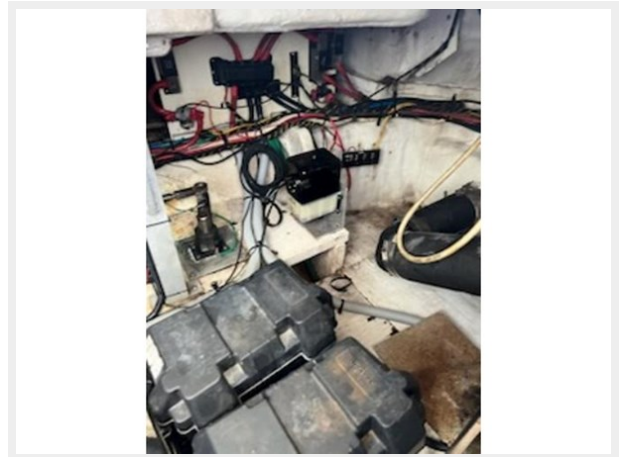
33



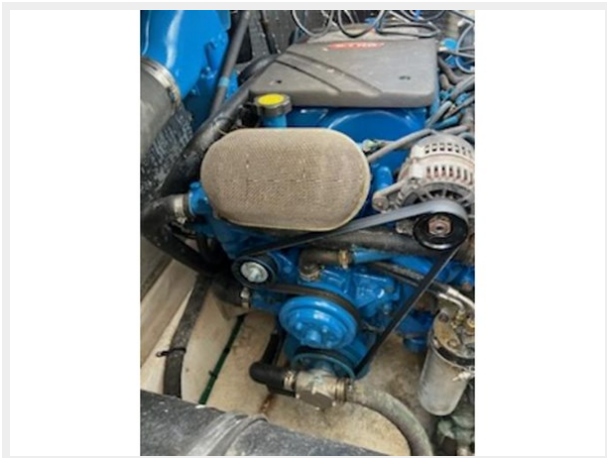
34



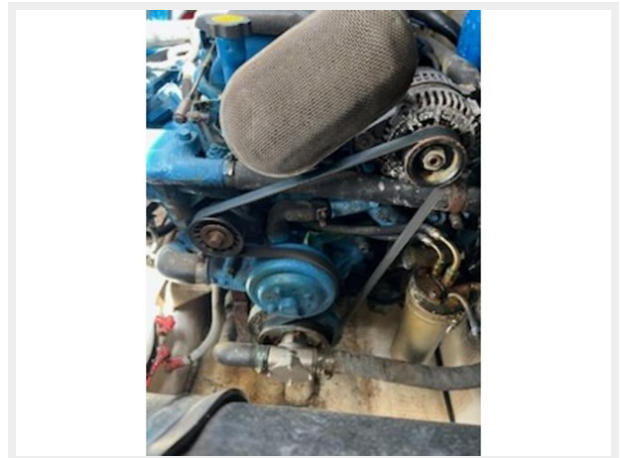
35



36



37



38



39



40



CONTACTS

Andrey Shestakov, leading yacht broker of the sales department of Shestakov Yacht Sales Inc. Shestakov Yacht Sales Inc., the official representative of the Miami/Fort Lauderdale FL headquarters.

Contact details

Email: andrey@shestakovyachtsales.com

Web: shestakovyachtsales.com/en/

Telephones

USA: +1(954)274-4435

Office hours

Monday – Saturday: **9:00 - 21:00** EDT

Sunday: **closed**

Address



Harbour Towne Marina, 850 NE 3rd St,
STE 213, Dania, FL 33004