

DIAMARE — SANLORENZO



Builder: SANLORENZO

Year Built: 2005

Model: Raised Pilothouse

Price: €1,950,000 EUR

Location: Greece

LOA: 87' 10" (26.75m)

Beam: 21.16

Max Draft: 5' 11" (1.8m)

Cruise Speed: 24 Knots Kts. (28 MPH)

Max Speed: 29 Knots Kts. (33 MPH)

Our experienced yacht broker, Andrey Shestakov, will help you choose and buy a yacht that best suits your needs **DIAMARE — SANLORENZO** from our catalogue. Presently, at Shestakov Yacht Sales Inc., we have a wide variety of yachts available on our sale's list. We also work in close contact with all the big yacht manufacturers from all over the world.

If you would like to buy a yacht **DIAMARE — SANLORENZO** or would like help answering any questions concerning purchasing, selling or chartering a yacht, please call **+1(954)274-4435**

TABLE OF CONTENTS

TABLE OF CONTENTS	2
SPECIFICATIONS	4
Basic Information	4
Dimensions	4
Speed, Capacities and Weight	4
Accommodations	4
Hull and Deck Information	4
Engine Information	5
PHOTOS	6
yachtImage_ext_452_9031	6
yachtImage_ext_452_9032	6
yachtImage_ext_452_9033	6
yachtImage_ext_452_9034	6
yachtImage_ext_452_9035	6
yachtImage_ext_452_9037	6
yachtImage_ext_452_9052	7
yachtImage_ext_452_9053	7
yachtImage_ext_452_20218	7
yachtImage_ext_452_20219	7
yachtImage_int_452_9038	7
yachtImage_int_452_9048	7
yachtImage_int_452_9049	8
yachtImage_int_452_20171	8
yachtImage_int_452_20173	8
yachtImage_int_452_20172	8
yachtImage_int_452_20174	8
yachtImage_int_452_20176	8
yachtImage_int_452_20178	9

yachtImage_int_452_20179	9
yachtImage_int_452_20180	9
yachtImage_int_452_20181	9
yachtImage_int_452_20184	9
yachtImage_int_452_20183	9
yachtImage_int_452_20186	10
yachtImage_int_452_20185	10
yachtImage_int_452_20188	10
yachtImage_int_452_20187	10
yachtImage_int_452_20190	10
yachtImage_int_452_20189	10
yachtImage_int_452_20191	11
yachtImage_int_452_20192	11
yachtImage_int_452_20193	11
yachtImage_int_452_20194	11
yachtImage_int_452_20220	11
yachtImage_int_452_20195	11
yachtImage_int_452_20221	12
yachtImage_int_452_20222	12
yachtImage_int_452_20223	12
CONTACTS	13
Contact details	13
Telephones	13
Office hours	13
Address	13

SPECIFICATIONS

Basic Information

Category: Raised Pilothouse

Sub Category: Raised Pilothouse

Model Year: 2005

Year Built: 2005

Country: Greece

Dimensions

LOA: 87' 10" (26.75mm)

Beam: 21.16

Max Draft: 5' 11" (1.8mm)

Speed, Capacities and Weight

Cruise Speed: 24 Knots Kts. (28 MPH)

Max Speed: 29 Knots Kts. (33 MPH)

Gross Tonnage: 132 Pounds

Water Capacity: 2500 Gallons

Fuel Capacity: 2747.39 Gal Gallons

Accommodations

Total Cabins: 4

Hull and Deck Information

Hull Material: Composite Fiberglass

Engine Information

Engines: 2

Manufacturer: MTU

Engine Type: Inboard

Fuel Type: Diesel

PHOTOS

yachtImage_ext_452_9031



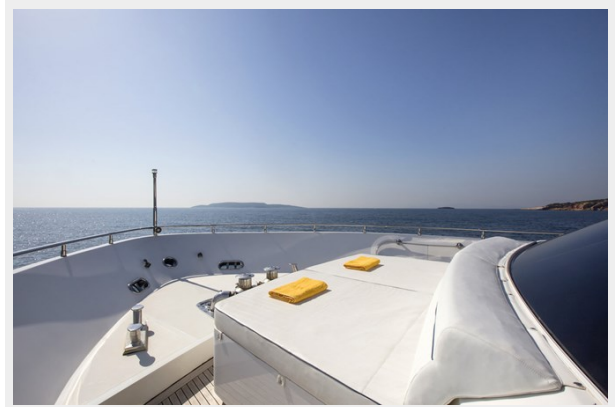
yachtImage_ext_452_9032



yachtImage_ext_452_9033



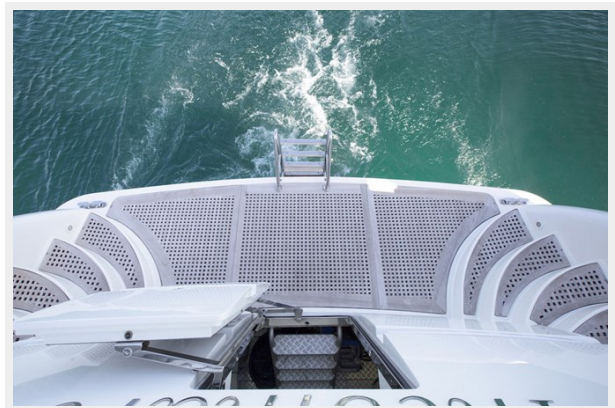
yachtImage_ext_452_9034



yachtImage_ext_452_9035



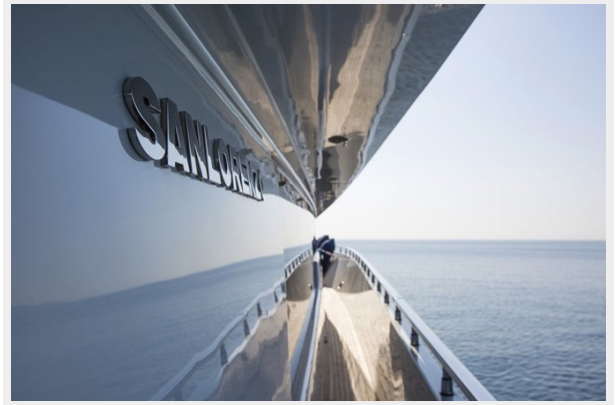
yachtImage_ext_452_9037



yachtImage_ext_452_9052



yachtImage_ext_452_9053



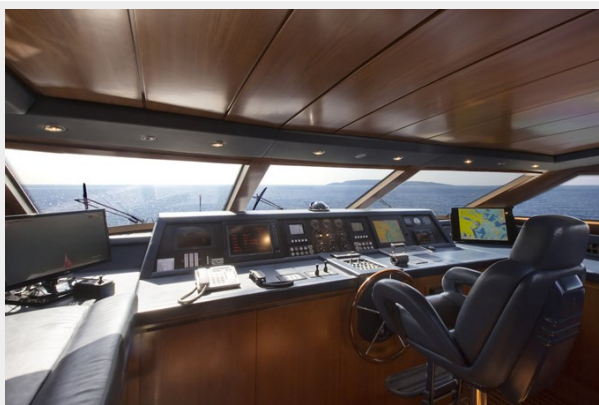
yachtImage_ext_452_20218



yachtImage_ext_452_20219



yachtImage_int_452_9038



yachtImage_int_452_9048



yachtImage_int_452_9049



yachtImage_int_452_20171



yachtImage_int_452_20172



yachtImage_int_452_20173



yachtImage_int_452_20174



yachtImage_int_452_20176



yachtImage_int_452_20178



yachtImage_int_452_20179



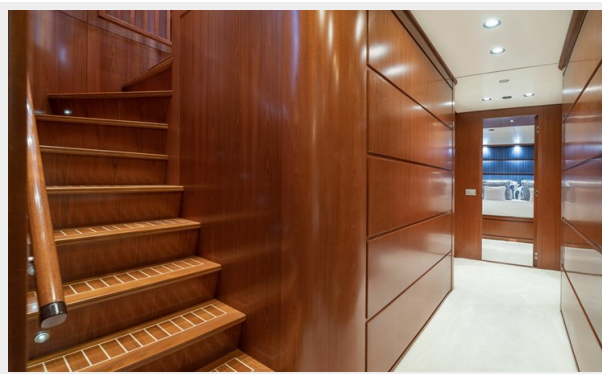
yachtImage_int_452_20180



yachtImage_int_452_20181



yachtImage_int_452_20183



yachtImage_int_452_20184



yachtImage_int_452_20185



yachtImage_int_452_20186



yachtImage_int_452_20187



yachtImage_int_452_20188



yachtImage_int_452_20189



yachtImage_int_452_20190



yachtImage_int_452_20191



yachtImage_int_452_20192



yachtImage_int_452_20193



yachtImage_int_452_20194



yachtImage_int_452_20195



yachtImage_int_452_20220



yachtImage_int_452_20221



yachtImage_int_452_20222



yachtImage_int_452_20223



CONTACTS

Andrey Shestakov, leading yacht broker of the sales department of Shestakov Yacht Sales Inc. Shestakov Yacht Sales Inc., the official representative of the Miami/Fort Lauderdale FL headquarters.

Contact details

Email: andrey@shestakovyachtsales.com

Web: shestakovyachtsales.com/en/

Telephones

USA: +1(954)274-4435

Office hours

Monday – Saturday: **9:00 - 21:00** EDT

Sunday: **closed**

Address



Harbour Towne Marina, 850 NE 3rd St,
STE 213, Dania, FL 33004