

ANAVI — ADMIRAL YACHTS



Builder: ADMIRAL YACHTS

Year Built: 2006

Model: Motor Yacht

Price: €4,300,000 EUR

Location: Croatia

LOA: 118' 5" (36.09mm)

Beam: 24.04

Max Draft: 7' 11" (2.4mm)

Cruise Speed: 18 Knots Kts. (21 MPH)

Max Speed: 28 Knots Kts. (32 MPH)

Our experienced yacht broker, Andrey Shestakov, will help you choose and buy a yacht that best suits your needs **ANAVI — ADMIRAL YACHTS** from our catalogue. Presently, at Shestakov Yacht Sales Inc., we have a wide variety of yachts available on our sale's list. We also work in close contact with all the big yacht manufacturers from all over the world.

If you would like to buy a yacht **ANAVI — ADMIRAL YACHTS** or would like help answering any questions concerning purchasing, selling or chartering a yacht, please call **+1(954)274-4435**

TABLE OF CONTENTS

TABLE OF CONTENTS	2
SPECIFICATIONS	4
Overview	4
Basic Information	4
Dimensions	4
Speed, Capacities and Weight	4
Accommodations	5
Hull and Deck Information	5
Engine Information	5
PHOTOS	6
Anavi front view	6
Anavi aerial view	6
Anavi water toys	6
Anavi swim platform	6
Anavi sunset cruising	6
Anavi foredeck	6
Anavi foredeck view	7
Anavi GYM	7
Anavi flybridge jacuzzi	7
Anavi flybridge massage	7
Anavi flybridge dining area	7
Anavi aft outside dining area	7
Anavi salon	7
Anavi inside lounge area	7
Anavi Master cabin	8
Anavi Master cabin detail	8
Anavi VIP cabin	8
Twin cabin	8

CONTACTS	9
Contact details	9
Telephones	9
Office hours	9
Address	9

SPECIFICATIONS

Overview

Anavi is a 35-meter-long Admiral yacht built on aluminium alloy. This 4-cabin motor beauty went through an extensive renovation in 2022 and she boasts with outstanding features such as the jacuzzi on the flybridge, spacious sunbathing areas and a brand new gym. The interior of Anavi is characterized by a palette that includes an elegant mix of shades of grey that recalls the color of the exterior. Additionally, it blends well with honey-colored wood floors, 100 years-old oak, Matt White ceilings and walls.

Basic Information

Category: Motor Yacht

Sub Category: Motor Yacht

Model Year: 2006

Year Built: 2006

Refit Type: Exterior maintenance, new carpet in the saloon, whole new couch upholstery, new bedding, new carpets in the cabins, teak sanding, new shading area, new cushions for the lounge area on the sundeck, brand new GYM area with treadmill

Country: Croatia

Dimensions

LOA: 118' 5" (36.09m)

Beam: 24.04

Max Draft: 7' 11" (2.4m)

Speed, Capacities and Weight

Cruise Speed: 18 Knots Kts. (21 MPH)

Max Speed: 28 Knots Kts. (32 MPH)

Gross Tonnage: 214 Pounds

Water Capacity: 4000 Gallons

Holding Tank: 264.17 Gal Gallons

Fuel Capacity: 5811.79 Gal Gallons

Fuel Consumption: 132.09 Gal Gallons

Accommodations

Total Cabins: 4

Total Berths: 6

Sleeps: 8

Total Heads: 4

Crew Cabin: 6

Hull and Deck Information

Hull Material: Aluminum

Deck Material: Teak

Hull Configuration: Planing

Hull Color: Light grey

Exterior Designer: CNL/ Luca Dini

Engine Information

Engines: 2

Manufacturer: MTU

Engine Type: Inboard

Fuel Type: Diesel

PHOTOS

Anavi front view



Anavi aerial view



Anavi water toys



Anavi swim platform



Anavi sunset cruising



Anavi foredeck



Anavi foredeck view



Anavi GYM



Anavi flybridge jacuzzi



Anavi flybridge massage



Anavi flybridge dining area



Anavi aft outside dining area



Anavi salon



Anavi inside lounge area



Anavi Master cabin



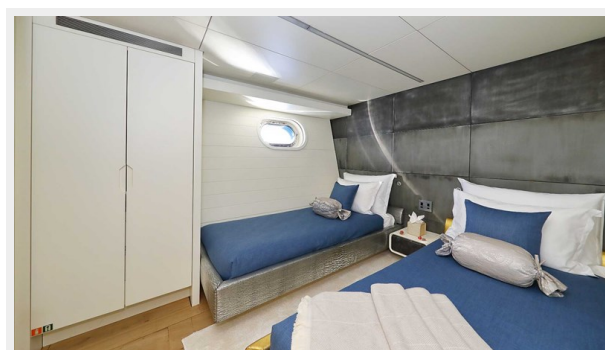
Anavi Master cabin detail



Anavi VIP cabin



Twin cabin



CONTACTS

Andrey Shestakov, leading yacht broker of the sales department of Shestakov Yacht Sales Inc. Shestakov Yacht Sales Inc., the official representative of the Miami/Fort Lauderdale FL headquarters.

Contact details

Email: andrey@shestakovyachtsales.com

Web: shestakovyachtsales.com/en/

Telephones

USA: +1(954)274-4435

Office hours

Monday – Saturday: **9:00 - 21:00** EDT

Sunday: **closed**

Address



Harbour Towne Marina, 850 NE 3rd St,
STE 213, Dania, FL 33004