

R-T-TIME — PRESTIGE



Builder: PRESTIGE

Year Built: 2019

Model: Flybridge

Price: PRICE ON APPLICATION

Location: United States

LOA: 63' (19.2mm)

Beam: 16.91

Min Draft: 4' 7" (1.4mm)

Cruise Speed: 24 Knots Kts. (28 MPH)

Max Speed: 29 Knots Kts. (33 MPH)

Our experienced yacht broker, Andrey Shestakov, will help you choose and buy a yacht that best suits your needs **R-T-TIME — PRESTIGE** from our catalogue. Presently, at Shestakov Yacht Sales Inc., we have a wide variety of yachts available on our sale's list. We also work in close contact with all the big yacht manufacturers from all over the world.

If you would like to buy a yacht **R-T-TIME — PRESTIGE** or would like help answering any questions concerning purchasing, selling or chartering a yacht, please call **+1(954)274-4435**

TABLE OF CONTENTS

| | |
|------------------------------|----|
| TABLE OF CONTENTS | 2 |
| SPECIFICATIONS | 6 |
| Overview | 6 |
| Basic Information | 6 |
| Dimensions | 6 |
| Speed, Capacities and Weight | 6 |
| Accommodations | 6 |
| Hull and Deck Information | 7 |
| Engine Information | 7 |
| PHOTOS | 8 |
| 1_2798496_ | 8 |
| 2_2798496_ | 8 |
| 3_2798496_ | 8 |
| 4_2798496_ | 8 |
| 5_2798496_ | 8 |
| 6_2798496_ | 8 |
| 7_2798496_ | 9 |
| 8_2798496_ | 9 |
| 9_2798496_ | 9 |
| 10_2798496_ | 9 |
| 11_2798496_ | 9 |
| 12_2798496_ | 9 |
| 13_2798496_ | 10 |
| 14_2798496_ | 10 |
| 15_2798496_ | 10 |
| 17_2798496_ | 10 |
| 18_2798496_ | 10 |
| 19_2798496_ | 10 |

| | |
|-------------|----|
| 22_2798496_ | 11 |
| 24_2798496_ | 11 |
| 25_2798496_ | 11 |
| 26_2798496_ | 11 |
| 27_2798496_ | 11 |
| 28_2798496_ | 11 |
| 29_2798496_ | 12 |
| 30_2798496_ | 12 |
| 31_2798496_ | 12 |
| 32_2798496_ | 12 |
| 34_2798496_ | 12 |
| 35_2798496_ | 12 |
| 37_2798496_ | 13 |
| 38_2798496_ | 13 |
| 39_2798496_ | 13 |
| 40_2798496_ | 13 |
| 41_2798496_ | 13 |
| 42_2798496_ | 13 |
| 43_2798496_ | 14 |
| 44_2798496_ | 14 |
| 45_2798496_ | 14 |
| 46_2798496_ | 14 |
| 47_2798496_ | 14 |
| 48_2798496_ | 14 |
| 49_2798496_ | 15 |
| 50_2798496_ | 15 |
| 51_2798496_ | 15 |
| 52_2798496_ | 15 |
| 53_2798496_ | 15 |

| | |
|-------------|----|
| 54_2798496_ | 15 |
| 55_2798496_ | 16 |
| 56_2798496_ | 16 |
| 57_2798496_ | 16 |
| 58_2798496_ | 16 |
| 59_2798496_ | 16 |
| 60_2798496_ | 16 |
| 61_2798496_ | 17 |
| 62_2798496_ | 17 |
| 63_2798496_ | 17 |
| 64_2798496_ | 17 |
| 65_2798496_ | 17 |
| 66_2798496_ | 17 |
| 67_2798496_ | 18 |
| 68_2798496_ | 18 |
| 69_2798496_ | 18 |
| 70_2798496_ | 18 |
| 72_2798496_ | 19 |
| 71_2798496_ | 19 |
| 73_2798496_ | 19 |
| 74_2798496_ | 19 |
| 76_2798496_ | 20 |
| 77_2798496_ | 20 |
| 78_2798496_ | 20 |
| 80_2798496_ | 20 |
| 81_2798496_ | 20 |
| 82_2798496_ | 20 |
| 83_2798496_ | 21 |
| 85_2798496_ | 21 |

| | |
|-----------------|----|
| 86_2798496_ | 21 |
| 87_2798496_ | 21 |
| 88_2798496_ | 21 |
| 89_2798496_ | 21 |
| 90_2798496_ | 22 |
| 91_2798496_ | 22 |
| 92_2798496_ | 22 |
| CONTACTS | 23 |
| Contact details | 23 |
| Telephones | 23 |
| Office hours | 23 |
| Address | 23 |

SPECIFICATIONS

Overview

Excellent opportunity on this very well maintained, one owner Prestige 630 S! Under 370 hours on Volvo IPS 950's and 550 hours on generator, with services on both just completed 1/23.

R-T-Time is also equipped with a Seakeeper (serviced 11/22) and offers a fantastic 3 stateroom 3 head layout with additional room for crew. Conveniently located in Palm Beach Gardens for viewing. Additional recent services include bottom job 1/23, fire suppression recertification 3/23, and drive service 11/22.

Basic Information

Category: Flybridge

Sub Category: Flybridge

Model Year: 2019

Year Built: 2019

Country: United States

Dimensions

LOA: 63' (19.2mm)

LOD: 55' 3" (16.84mm)

Beam: 16.91

Min Draft: 4' 7" (1.4mm)

Speed, Capacities and Weight

Cruise Speed: 24 Knots Kts. (28 MPH)

Cruise Speed Range: 280

Max Speed: 29 Knots Kts. (33 MPH)

Water Capacity: 188 Gallons

Holding Tank: 55 Gal Gallons

Fuel Capacity: 713 Gal Gallons

Accommodations

Total Cabins: 3

Total Heads: 3

Hull and Deck Information

Hull Material: Fiberglass

Engine Information

Engines: 2

Manufacturer: Volvo

Engine Type: Inboard

Fuel Type: Diesel

PHOTOS

1_2798496_



2_2798496_



3_2798496_



4_2798496_



5_2798496_



6_2798496_



7_2798496_



8_2798496_



9_2798496_



10_2798496_



11_2798496_



12_2798496_



13_2798496_



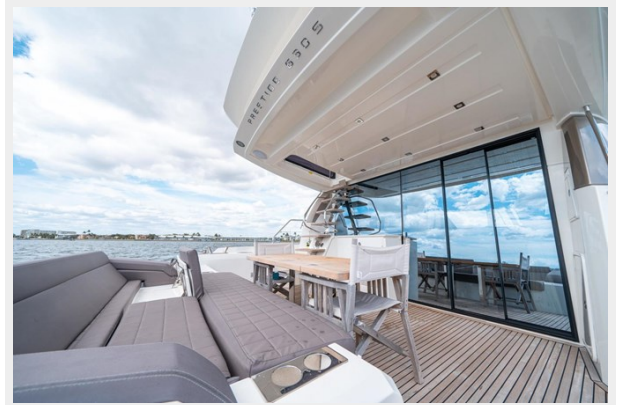
14_2798496_



15_2798496_



17_2798496_



18_2798496_



19_2798496_



22_2798496_



24_2798496_



25_2798496_



26_2798496_



27_2798496_



28_2798496_



29_2798496_



30_2798496_



31_2798496_



32_2798496_



34_2798496_



35_2798496_



37_2798496_



38_2798496_



39_2798496_



40_2798496_



41_2798496_



42_2798496_



43_2798496_



44_2798496_



45_2798496_



46_2798496_



47_2798496_



48_2798496_



49_2798496_



50_2798496_



51_2798496_



52_2798496_



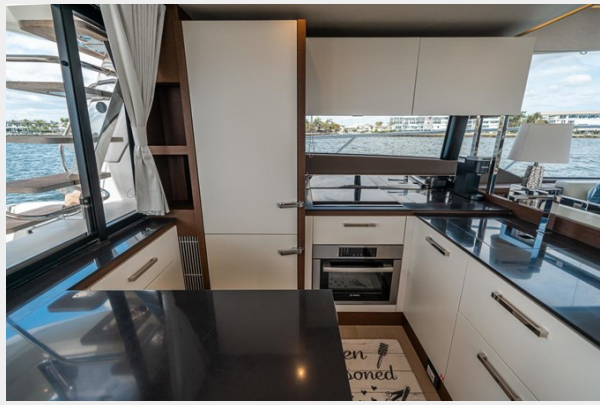
53_2798496_



54_2798496_



55_2798496_



56_2798496_



57_2798496_



58_2798496_



59_2798496_



60_2798496_



61_2798496_



62_2798496_



63_2798496_



64_2798496_



65_2798496_



66_2798496_



67_2798496_



68_2798496_



69_2798496_



70_2798496_



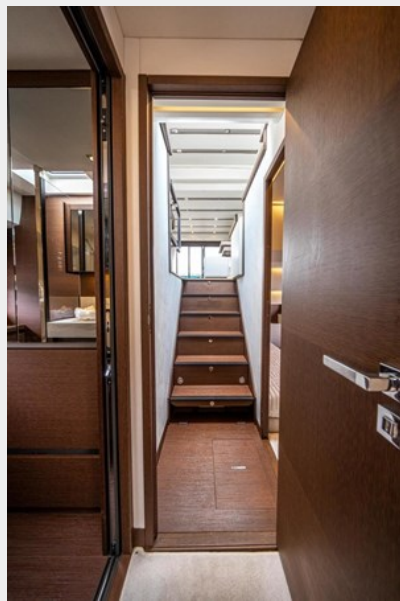
71_2798496_



72_2798496_



73_2798496_



74_2798496_



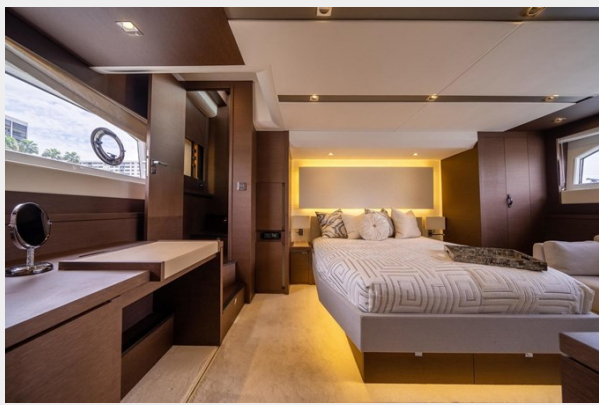
76_2798496_



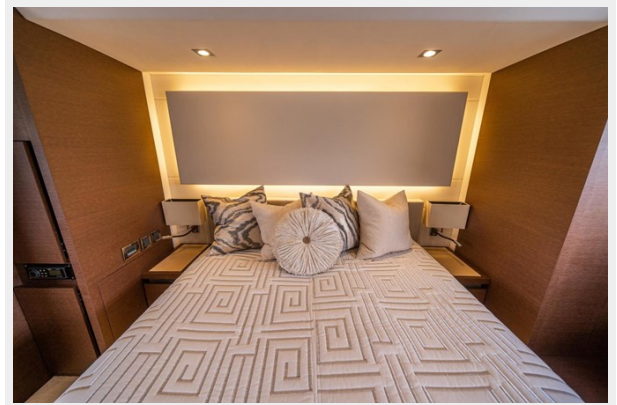
77_2798496_



78_2798496_



80_2798496_



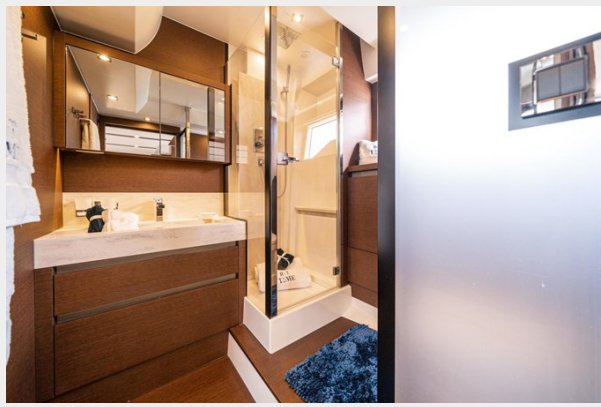
81_2798496_



82_2798496_



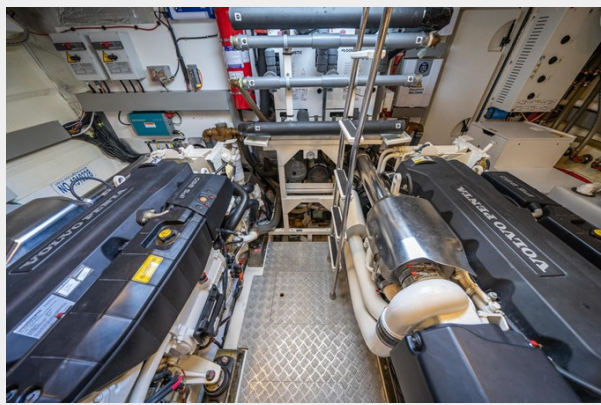
83_2798496_



85_2798496_



86_2798496_



87_2798496_



88_2798496_



89_2798496_



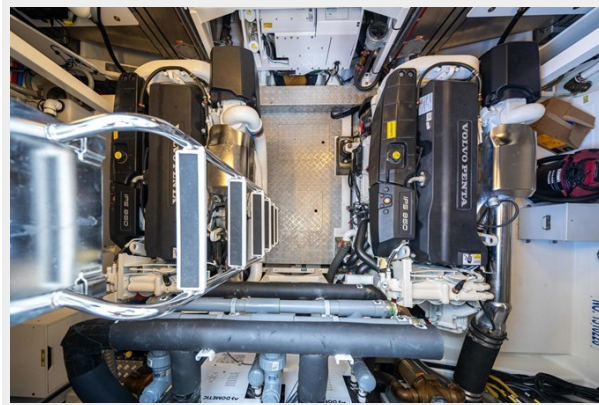
90_2798496_



91_2798496_



92_2798496_



CONTACTS

Andrey Shestakov, leading yacht broker of the sales department of Shestakov Yacht Sales Inc. Shestakov Yacht Sales Inc., the official representative of the Miami/Fort Lauderdale FL headquarters.

Contact details

Email: andrey@shestakovyachtsales.com

Web: shestakovyachtsales.com/en/

Telephones

USA: +1(954)274-4435

Office hours

Monday – Saturday: **9:00 - 21:00** EDT

Sunday: **closed**

Address



Harbour Towne Marina, 850 NE 3rd St,
STE 213, Dania, FL 33004