

## 31 OPEN — CONTENDER



**Builder:** CONTENDER

**Year Built:** 2005

**Model:** center\_console

**Price:** PRICE ON APPLICATION

**Location:** United States

**LOA:** 32' 6" (9.91mm)

**Beam:** 9.33

**Min Draft:** 1' 6" (0.46mm)

Our experienced yacht broker, Andrey Shestakov, will help you choose and buy a yacht that best suits your needs **31 Open — CONTENDER** from our catalogue. Presently, at Shestakov Yacht Sales Inc., we have a wide variety of yachts available on our sale's list. We also work in close contact with all the big yacht manufacturers from all over the world.

If you would like to buy a yacht **31 Open — CONTENDER** or would like help answering any questions concerning purchasing, selling or chartering a yacht, please call **+1(954)274-4435**

# TABLE OF CONTENTS

TABLE OF CONTENTS	2
SPECIFICATIONS	4
Overview	4
Basic Information	4
Dimensions	4
Speed, Capacities and Weight	4
Hull and Deck Information	5
Engine Information	5
PHOTOS	6
2	6
3	6
4	6
5	6
6	6
7	6
8	7
9	7
10	7
11	7
12	7
13	7
14	8
15	8
16	8
17	8
18	8
19	8
20	9

---

21	9
22	9
23	9
24	9
25	9
26	10
27	10
28	10
29	10
30	10
31	10
32	11
33	11
34	11
CONTACTS	12
Contact details	12
Telephones	12
Office hours	12
Address	12

---

---

# SPECIFICATIONS

---

## Overview

---

This 2005/2010 31 Contender was repowered in 2010 with Reliable Yamaha 300 Four Strokes. She is Rigged to Fish, and also come with a Rhodan Spot Lock Trolling Motor. The Electronics were updated in 2020 with Garmin Chart Plotters, Garmin Sounder with Garmin 3D Mapping Chip, and Garmin Radar. A Tandem Axle 2010 Ameri-Trial Trailer comes with the boat.

The Legendary 31 Contender features a one-piece level deck from bow to stern, walk through transom door, and a self bailing cockpit!

**A South East Commercial King Mackerel Permit is also available to be purchased with the boat, but not included in the listed price. The Permit is \$20,000 Additional.**

**Please check the FULL SPECS for more details and give us a call for more information and to schedule an appointment to have a look for yourself!**

## Basic Information

---

**Category:** center\_console

**Sub Category:** Center Console

**Model Year:** 2005

**Year Built:** 2005

**Country:** United States

## Dimensions

---

**LOA:** 32' 6" (9.91mm)

**Beam:** 9.33

**Min Draft:** 1' 6" (0.46mm)

## Speed, Capacities and Weight

---

**Fuel Capacity:** 305 Gal Gallons

---

## Hull and Deck Information

---

**Hull Material:** Fiberglass

## Engine Information

---

**Engines:** 2

**Manufacturer:** Yamaha

**Engine Type:** Outboard

**Fuel Type:** Gas/Petrol

# PHOTOS

2



3



4



5



6



7



8



9



10



11



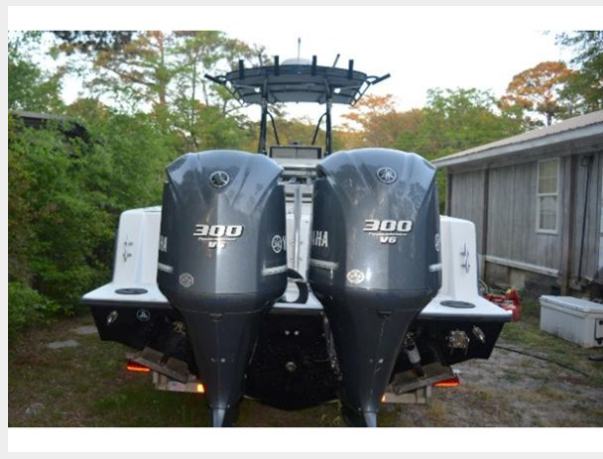
12



13



14



15



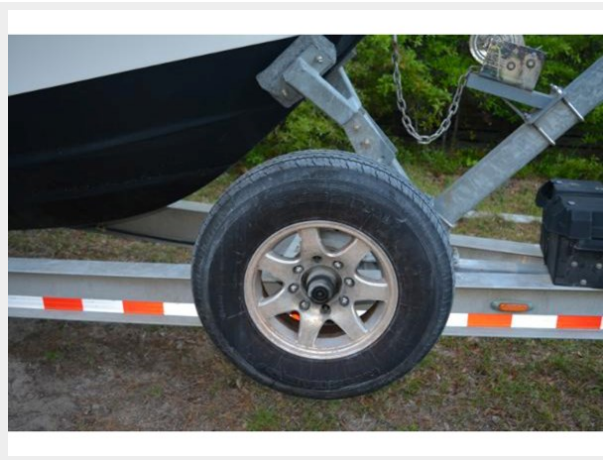
16



17



18



19





20



21



22



23



24



25



26



27



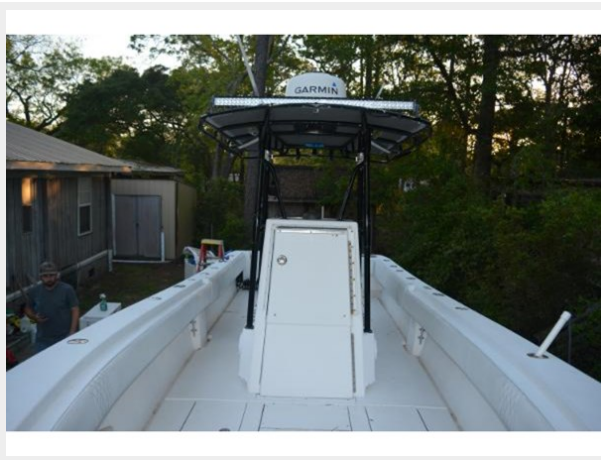
28



29



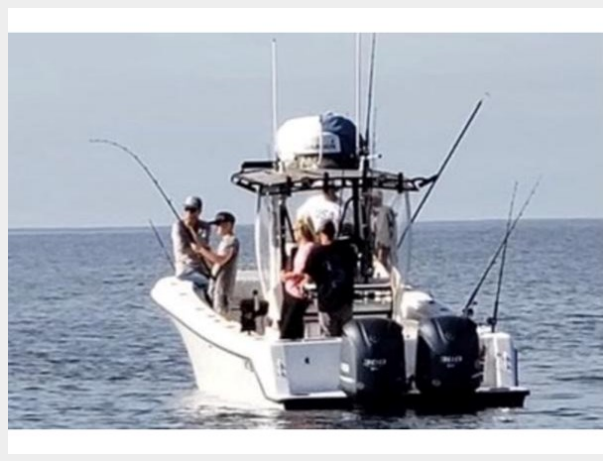
30



31



32



33



34



# CONTACTS

---

Andrey Shestakov, leading yacht broker of the sales department of Shestakov Yacht Sales Inc. Shestakov Yacht Sales Inc., the official representative of the Miami/Fort Lauderdale FL headquarters.

## Contact details

---

Email: [andrey@shestakovyachtsales.com](mailto:andrey@shestakovyachtsales.com)

Web: [shestakovyachtsales.com/en/](http://shestakovyachtsales.com/en/)

## Telephones

---

USA: +1(954)274-4435

## Office hours

---

Monday – Saturday: **9:00 - 21:00** EDT

Sunday: **closed**

## Address

---



Harbour Towne Marina, 850 NE 3rd St,  
STE 213, Dania, FL 33004