

ALIKAL — HATTERAS



Builder: HATTERAS

Year Built: 1986

Model: Convertible

Price: PRICE ON APPLICATION

Location: United States

LOA: 41' (12.5mm)

Beam: 14.25

Min Draft: 4' 4" (1.32mm)

Cruise Speed: 20 Knots Kts. (23 MPH)

Max Speed: 25 Knots Kts. (29 MPH)

Our experienced yacht broker, Andrey Shestakov, will help you choose and buy a yacht that best suits your needs **ALIKAL — HATTERAS** from our catalogue. Presently, at Shestakov Yacht Sales Inc., we have a wide variety of yachts available on our sale's list. We also work in close contact with all the big yacht manufacturers from all over the world.

If you would like to buy a yacht **ALIKAL — HATTERAS** or would like help answering any questions concerning purchasing, selling or chartering a yacht, please call **+1(954)274-4435**

TABLE OF CONTENTS

TABLE OF CONTENTS	2
SPECIFICATIONS	5
Overview	5
Basic Information	5
Dimensions	5
Speed, Capacities and Weight	5
Accommodations	5
Hull and Deck Information	6
Engine Information	6
PHOTOS	7
Aft Port Quarter	7
Profile	7
Dockside	7
Salon Settee	7
Helm Console	7
Flybridge	7
Forward Flybridge Lounge	8
Compass and Helm Gauges	8
Electronics	8
Ignition Keys and Switch Panels	8
Cockpit	8
Cockpit Tackle Center	8
Salon	9
Sectional Sofa with Storage Beneath	9
Galley Looking Aft	9
Newer Refrigerator	9
Galley Maid Stove and Oven	9
U-line Ice Cube Machine	9

Microwave Oven	10
Galley	10
Both Stateroom Entry's from Companionway	10
Samsung Flat Panel TV	10
Master Stateroom	10
One of two MSR closets	10
Portside Closet and Private Head Entry from MSR	11
Head	11
Shower Stall Enclosure	11
Shower Stall	11
Guest Stateroom Entry	11
Guest Stateroom Closet	11
Guest Stateroom	12
Salon Soffit Lighting	12
Salon Headliner	12
Blinds in Salon	12
Engine Room Opening	12
Engine Room	12
Port Main Engine	13
Onan Generator in Sound Shield	13
Racor Filter and Custom Vent Catch Tank	13
Battery Charger	13
Fiberglass Swim Platform	13
Profile 4 Aft	13
Aft Flybridge Rail - Rod Storage Rack	14
Deckhouse Portside	14
Foredeck	14
Bow Area and Railing	14
Windlass and Pulpit	14

Forward Deckhouse	14
Deckhouse Starboard Side	15
Removable Underdeck Fish Box	15
Folding Chairs for Cockpit	15
Profile	15
CONTACTS	16
Contact details	16
Telephones	16
Office hours	16
Address	16

SPECIFICATIONS

Overview

N/A

Basic Information

Category: Convertible

Sub Category: Convertible

Model Year: 1986

Year Built: 1986

Country: United States

Dimensions

LOA: 41' (12.5mm)

Beam: 14.25

Min Draft: 4' 4" (1.32mm)

Speed, Capacities and Weight

Cruise Speed: 20 Knots Kts. (23 MPH)

Max Speed: 25 Knots Kts. (29 MPH)

Gross Tonnage: 17.7 Pounds

Water Capacity: 150 Gallons

Holding Tank: 50 Gal Gallons

Fuel Capacity: 500 Gal Gallons

Accommodations

Total Cabins: 2

Total Berths: 3

Total Heads: 1

Hull and Deck Information

Hull Material: Fiberglass

Hull Configuration: Modified V-Hull

Hull Designer: J Hargrave

Engine Information

Engines: 2

Manufacturer: Detroit Diesel

Engine Type: Inboard

PHOTOS

Aft Port Quarter



Profile



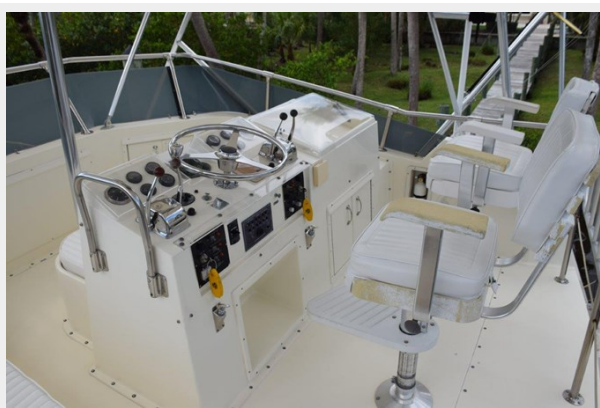
Dockside



Salon Settee



Helm Console



Flybridge



Forward Flybridge Lounge



Compass and Helm Gauges



Electronics



Ignition Keys and Switch Panels



Cockpit



Cockpit Tackle Center



Salon



Sectional Sofa with Storage Beneath



Galley Looking Aft



Newer Refrigerator



Galley Maid Stove and Oven



U-line Ice Cube Machine



Microwave Oven



Galley



Samsung Flat Panel TV



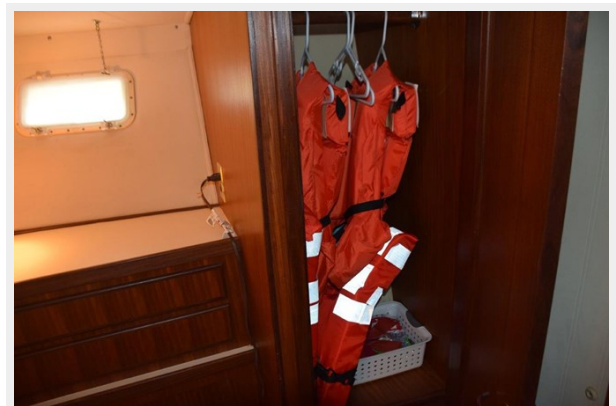
Both Stateroom Entry's from Companionway



Master Stateroom



One of two MSR closets



Portside Closet and Private Head Entry from MSR



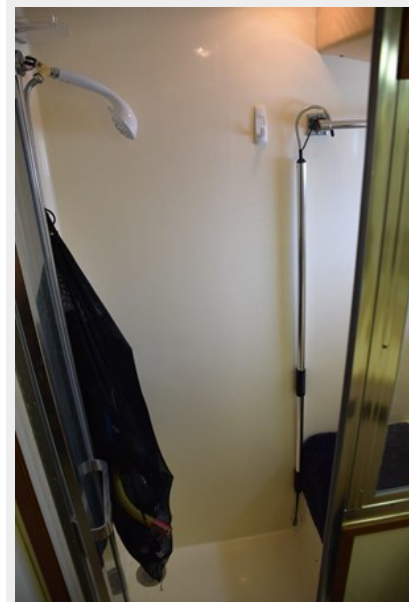
Head



Shower Stall



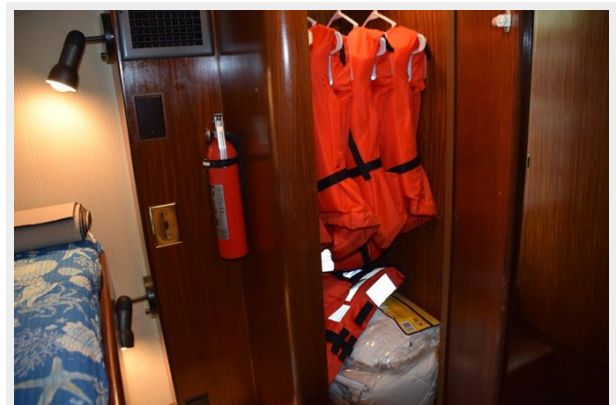
Shower Stall Enclosure



Guest Stateroom Entry



Guest Stateroom Closet



Guest Stateroom



Salon Soffit Lighting



Salon Headliner



Blinds in Salon



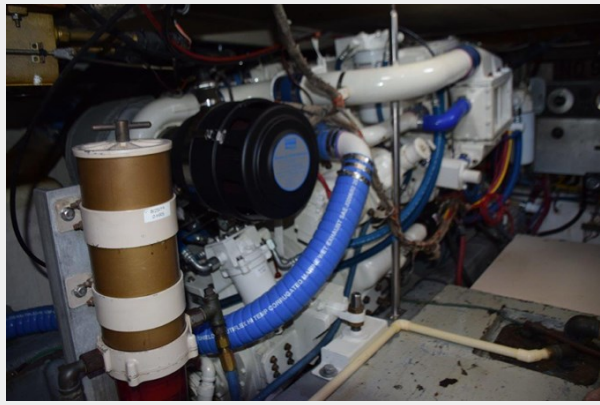
Engine Room Opening



Engine Room



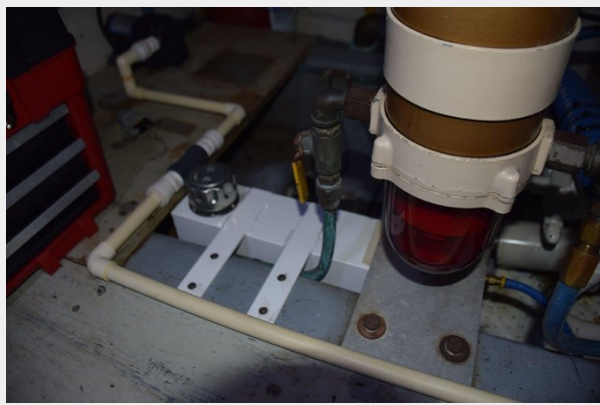
Port Main Engine



Onan Generator in Sound Shield



Racor Filter and Custom Vent Catch Tank



Battery Charger



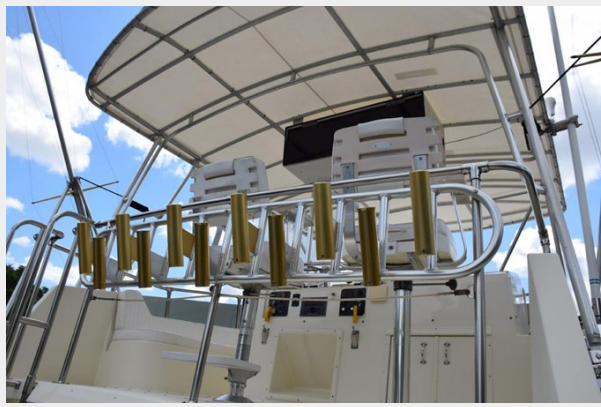
Fiberglass Swim Platform



Profile 4 Aft



Aft Flybridge Rail - Rod Storage Rack



Deckhouse Portside



Foredeck



Bow Area and Railing



Windlass and Pulpit



Forward Deckhouse



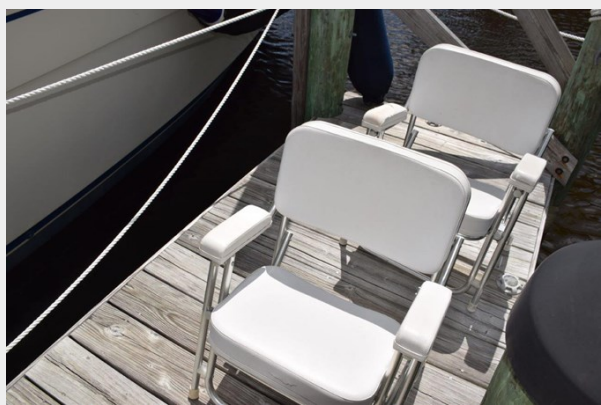
Deckhouse Starboard Side



Removable Underdeck Fish Box



Folding Chairs for Cockpit



Profile



CONTACTS

Andrey Shestakov, leading yacht broker of the sales department of Shestakov Yacht Sales Inc. Shestakov Yacht Sales Inc., the official representative of the Miami/Fort Lauderdale FL headquarters.

Contact details

Email: andrey@shestakovyachtsales.com

Web: shestakovyachtsales.com/en/

Telephones

USA: +1(954)274-4435

Office hours

Monday – Saturday: **9:00 - 21:00** EDT

Sunday: **closed**

Address



Harbour Towne Marina, 850 NE 3rd St,
STE 213, Dania, FL 33004