

OCTOBER MORNING — GRAND BANKS



Builder: GRAND BANKS

Year Built: 1983

Model: trawler

Price: PRICE ON APPLICATION

Location: United States

LOA: 32' (9.75mm)

Beam: 10.41

Max Draft: 3' 8" (1.12mm)

Cruise Speed: 6 Knots Kts. (7 MPH)

Max Speed: 9 Knots Kts. (10 MPH)

Our experienced yacht broker, Andrey Shestakov, will help you choose and buy a yacht that best suits your needs **October Morning — GRAND BANKS** from our catalogue. Presently, at Shestakov Yacht Sales Inc., we have a wide variety of yachts available on our sale's list. We also work in close contact with all the big yacht manufacturers from all over the world.

If you would like to buy a yacht **October Morning — GRAND BANKS** or would like help answering any questions concerning purchasing, selling or chartering a yacht, please call **+1(954)274-4435**

TABLE OF CONTENTS

TABLE OF CONTENTS	2
SPECIFICATIONS	5
Overview	5
Basic Information	5
Dimensions	5
Speed, Capacities and Weight	5
Accommodations	5
Hull and Deck Information	5
Engine Information	5
PHOTOS	6
0_2798420_32_grand_banks_port_aft_profile1	6
1_2798420_32_grand_banks_port_aft_profile2	6
2_2798420_32_grand_banks_port_forward_profile	6
3_2798420_32_grand_banks_starboard_aft_profile	6
4_2798420_32_grand_banks_anchor_windlass	6
5_2798420_32_grand_banks_foredeck1	6
7_2798420_32_grand_banks_foredeck_aft	6
6_2798420_32_grand_banks_foredeck2	6
8_2798420_32_grand_banks_port_side_deck1	7
9_2798420_32_grand_banks_port_side_deck2	7
10_2798420_32_grand_banks_starboard_side_deck1	7
11_2798420_32_grand_banks_starboard_side_deck2	7
12_2798420_32_grand_banks_flybridge_forward	7
13_2798420_32_grand_banks_flybridge_aft	7
14_2798420_32_grand_banks_flybridge_port	7
15_2798420_32_grand_banks_flybridge_starboard	7
16_2798420_32_grand_banks_flybridge_helm	8
17_2798420_32_grand_banks_flybridge_port_seating	8

18_2798420_32_grand_banks_flybridge_starboard	8
19_2798420_32_grand_banks_aftdeck	8
20_2798420_32_grand_banks_aftdeck_forward	8
21_2798420_32_grand_banks_aftdeck_port	8
22_2798420_32_grand_banks_aftdeck_starboard	8
23_2798420_32_grand_banks_magam_bbq_grill	8
24_2798420_32_grand_banks_swimplatform	9
25_2798420_32_grand_banks_salon_forward	9
26_2798420_32_grand_banks_salon_aft	9
27_2798420_32_grand_banks_salon_port	9
28_2798420_32_grand_banks_salon_starboard	9
29_2798420_32_grand_banks_salon_port_seating1	9
30_2798420_32_grand_banks_salon_port_seating2	9
31_2798420_32_grand_banks_salon_starboard_seating1	9
32_2798420_32_grand_banks_salon_starboard_seating2	10
33_2798420_32_grand_banks_galley1	10
34_2798420_32_grand_banks_galley2	10
35_2798420_32_grand_banks_lower_helm1	10
36_2798420_32_grand_banks_lower_helm2	10
37_2798420_32_grand_banks_lower_helm_electronics	10
38_2798420_32_grand_banks_lower_helm_benchseat	10
39_2798420_32_grand_banks_stateroom1	10
40_2798420_32_grand_banks_stateroom2	11
41_2798420_32_grand_banks_stateroom_port	11
43_2798420_32_grand_banks_head	11
42_2798420_32_grand_banks_stateroom_starboard	11
44_2798420_32_grand_banks_engine_room_access	11
45_2798420_32_grand_banks_engine_room_port_forward	11
46_2798420_32_grand_banks_engine_room_starboard_forward	11

47_2798420_32_grand_banks_engine_room_starboard_aft	11
48_2798420_32_grand_banks_main_engine1	12
49_2798420_32_grand_banks_main_engine2	12
50_2798420_32_grand_banks_racor_fuel_filter	12
51_2798420_32_grand_banks_water_heater	12
52_2798420_32_grand_banks_generator_soundbox	12
53_2798420_32_grand_banks_generator	12
54_2798420_32_grand_banks_inverter	12
CONTACTS	13
Contact details	13
Telephones	13
Office hours	13
Address	13

SPECIFICATIONS

Overview

October Morning is a 1983 32' Grand Banks sedan trawler in good condition. She offers a single Ford Lehman naturally aspirated 120 HP main engine, a newer Westerbeke 5 kW generator, Freedom Marine 1,000 watt inverter, air conditioning/heating system and full Eisenglass enclosure on the flybridge. She was recently moved form Winter storage to her slip, so she is available to be inspected anytime. October Morning is a Great Loop veteran.

Basic Information

Category: trawler	Model Year: 1983
Year Built: 1983	Country: United States

Dimensions

LOA: 32' (9.75mm)	Beam: 10.41
Max Draft: 3' 8" (1.12mm)	

Speed, Capacities and Weight

Cruise Speed: 6 Knots Kts. (7 MPH)	Max Speed: 9 Knots Kts. (10 MPH)
Water Capacity: 100 Gallons	Holding Tank: 60 Gal Gallons
Fuel Capacity: 220 Gal Gallons	

Accommodations

Total Cabins: 1	Total Heads: 1
------------------------	-----------------------

Hull and Deck Information

Hull Material: Fiberglass

Engine Information

Engines: 1	Manufacturer: Ford Lehman
Engine Type: Inboard	Fuel Type: Diesel

PHOTOS

0_2798420_32_grand_banks_port_aft_profile1



1_2798420_32_grand_banks_port_aft_profile2



2_2798420_32_grand_banks_port_forward_profile



3_2798420_32_grand_banks_starboard_aft_profile



4_2798420_32_grand_banks_anchor_windlass



5_2798420_32_grand_banks_foredeck1



6_2798420_32_grand_banks_foredeck2



7_2798420_32_grand_banks_foredeck_aft



8_2798420_32_grand_banks_port_side_deck1



9_2798420_32_grand_banks_port_side_deck2



10_2798420_32_grand_banks_starboard_side_deck1



11_2798420_32_grand_banks_starboard_side_deck2



12_2798420_32_grand_banks_flybridge_forward



13_2798420_32_grand_banks_flybridge_aft



14_2798420_32_grand_banks_flybridge_port



15_2798420_32_grand_banks_flybridge_starboard



16_2798420_32_grand_banks_flybridge_helm



17_2798420_32_grand_banks_flybridge_port_seating



18_2798420_32_grand_banks_flybridge_starboard



19_2798420_32_grand_banks_aftdeck



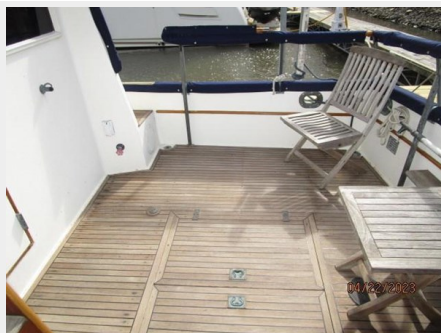
20_2798420_32_grand_banks_aftdeck_forward



21_2798420_32_grand_banks_aftdeck_port



22_2798420_32_grand_banks_aftdeck_starboard



23_2798420_32_grand_banks_magam_bbq_grill



24_2798420_32_grand_banks_swimplatform



25_2798420_32_grand_banks_salon_forward



26_2798420_32_grand_banks_salon_aft



27_2798420_32_grand_banks_salon_port



28_2798420_32_grand_banks_salon_starboard



29_2798420_32_grand_banks_salon_port_seating1



30_2798420_32_grand_banks_salon_port_seating2



31_2798420_32_grand_banks_salon_starboard_seating1



32_2798420_32_grand_banks_salon_starboard_seating2



33_2798420_32_grand_banks_galley1



34_2798420_32_grand_banks_galley2



35_2798420_32_grand_banks_lower_helm1



36_2798420_32_grand_banks_lower_helm2



37_2798420_32_grand_banks_lower_helm_electronics



38_2798420_32_grand_banks_lower_helm_benchseat



39_2798420_32_grand_banks_stateroom1



40_2798420_32_grand_banks_stateroom2



41_2798420_32_grand_banks_stateroom_port



42_2798420_32_grand_banks_stateroom_starboard



43_2798420_32_grand_banks_head



44_2798420_32_grand_banks_engine_room_access



45_2798420_32_grand_banks_engine_room_port_forward



46_2798420_32_grand_banks_engine_room_starboard_forward 47_2798420_32_grand_banks_engine_room_starboard_aft



48_2798420_32_grand_banks_main_engine1



49_2798420_32_grand_banks_main_engine2



50_2798420_32_grand_banks_racor_fuel_filter



51_2798420_32_grand_banks_water_heater



52_2798420_32_grand_banks_generator_soundbox



53_2798420_32_grand_banks_generator



54_2798420_32_grand_banks_inverter



CONTACTS

Andrey Shestakov, leading yacht broker of the sales department of Shestakov Yacht Sales Inc. Shestakov Yacht Sales Inc., the official representative of the Miami/Fort Lauderdale FL headquarters.

Contact details

Email:
andrey@shestakovyachtsales.com

Web: shestakovyachtsales.com/en/

Telephones

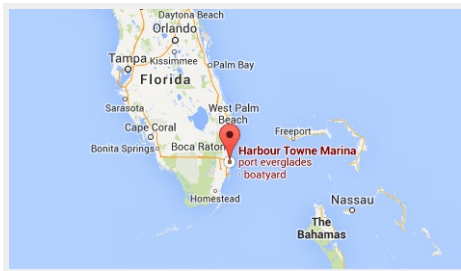
USA: +1(954)274-4435

Office hours

Monday – Saturday: **9:00 - 21:00** EDT

Sunday: **closed**

Address



Harbour Towne Marina, 850 NE 3rd St,
STE 213, Dania, FL 33004