

LADY MAY — FEADSHIP



Builder: FEADSHIP

Year Built: 2014

Model: Motor Yacht

Price: PRICE ON APPLICATION

Location: United States

LOA: 151' 8" (46.22mm)

Beam: 29.52

Min Draft: 7' 3" (2.2mm)

Cruise Speed: 15 Knots Kts. (17 MPH)

Max Speed: 19 Knots Kts. (22 MPH)

Our experienced yacht broker, Andrey Shestakov, will help you choose and buy a yacht that best suits your needs **LADY MAY — FEADSHIP** from our catalogue. Presently, at Shestakov Yacht Sales Inc., we have a wide variety of yachts available on our sale's list. We also work in close contact with all the big yacht manufacturers from all over the world.

If you would like to buy a yacht **LADY MAY — FEADSHIP** or would like help answering any questions concerning purchasing, selling or chartering a yacht, please call **+1(954)274-4435**

TABLE OF CONTENTS

TABLE OF CONTENTS	2
SPECIFICATIONS	3
Overview	3
Basic Information	3
Dimensions	4
Speed, Capacities and Weight	4
Accommodations	4
Hull and Deck Information	4
Engine Information	4
PHOTOS	5
CONTACTS	9
Contact details	9
Telephones	9
Office hours	9
Address	9

SPECIFICATIONS

Overview

46m Lady May is now in Newport RI enrolled in the FTZ and is available for inspection on short notice. She is a stunning example of the finest Feadship quality on a sporty 46m Dubois aluminum hull with an immaculate RWD interior. In light of multiple offers received to date, the bankruptcy court appointed trustee (who owns the Lady May) has determined to invite any and all interested parties to present their final and best offers by Tuesday May 30th at 5:00 p.m. (ET). Offers must comply with certain conditions, including a minimum purchase price of \$20 million. All offers are subject to bankruptcy court approval. Please contact Dirk Johnson for further details, including offer conditions.

LADY MAY is one of the most outstanding yachts of her size ever built. Built by Feadship with naval architecture by Dubois and interior styling by RWD, LADY MAY is a true leader in her class. The combination of this impressive team resulted in the yacht winning a succession of awards in 2015.

The stunning lines of the yacht both appear sleek and hint at her highly efficient hull design. Her silver hull and superstructure make her instantly recognizable in every port and anchorage.

The interior is an elegant blend of white marble, bleached oak, stainless, and Macassar ebony that creates a modern yet warm and welcoming environment. The large windows allowing plenty of natural light in the saloon and the cleverly designed rotating seating area allows guests to maximise the stunning views.

Basic Information

Category: Motor Yacht

Model Year: 2014

Year Built: 2014

Country: United States

Dimensions

LOA: 151' 8" (46.22mm)

LWL: 146' 4" (44.6mm)

Beam: 29.52

Min Draft: 7' 3" (2.2mm)

Speed, Capacities and Weight

Cruise Speed: 15 Knots Kts. (17 MPH)

Cruise Speed Range: 3000

Max Speed: 19 Knots Kts. (22 MPH)

Gross Tonnage: 406 Pounds

Water Capacity: 16000 Gallons

Fuel Capacity: 13472.77 Gal Gallons

Accommodations

Total Cabins: 5

Sleeps: 10

Crew Cabin: 8

Hull and Deck Information

Hull Material: Aluminum

Deck Material: Teak and Fiberglass

Hull Configuration: Semi-Displacement

Exterior Designer: Dubois Naval Architects

Interior Designer: RWD

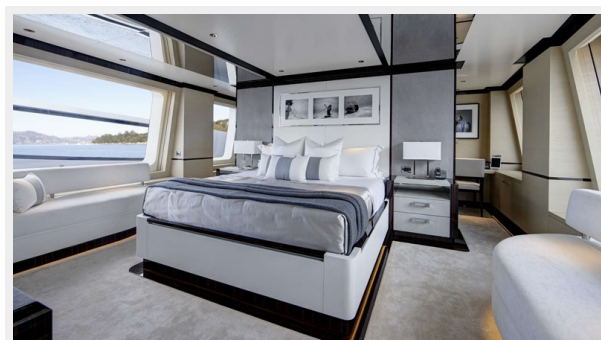
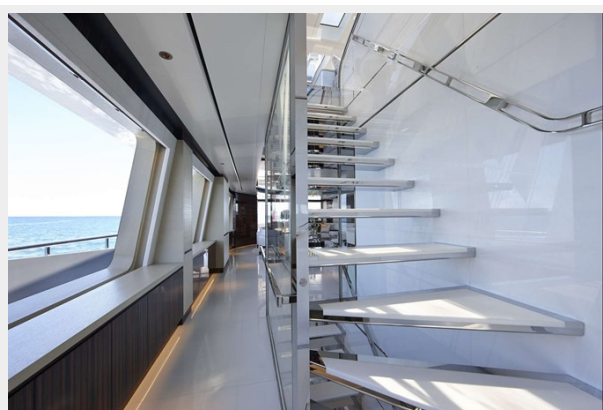
Engine Information

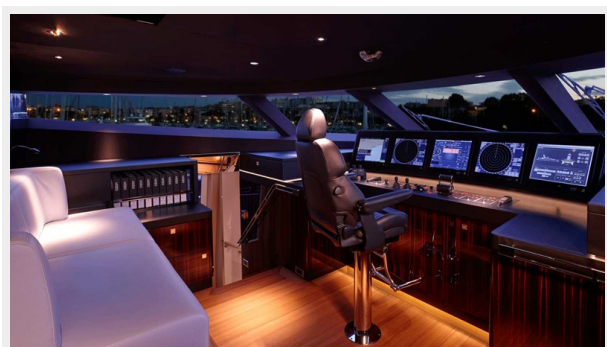
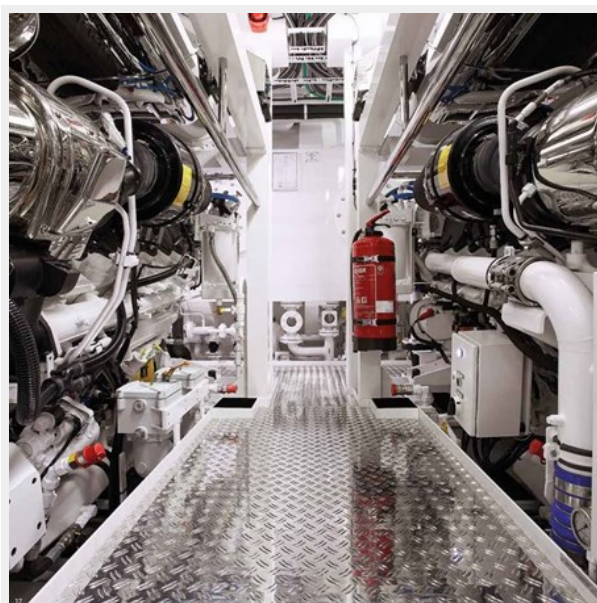
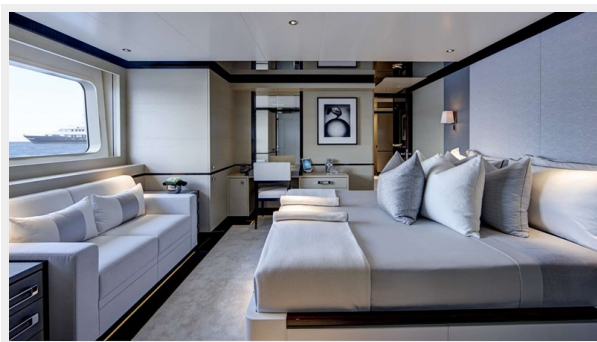
Engines: 2

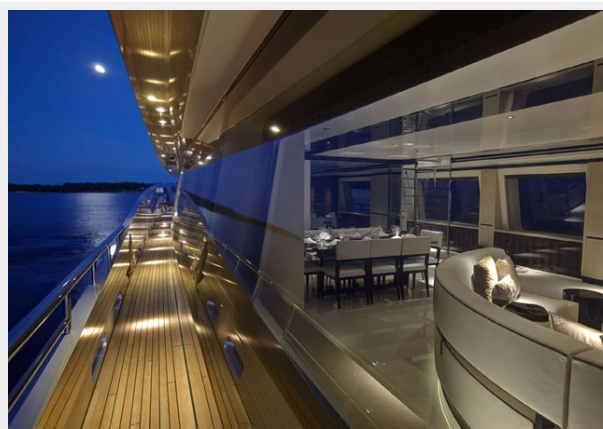
Manufacturer: Caterpillar

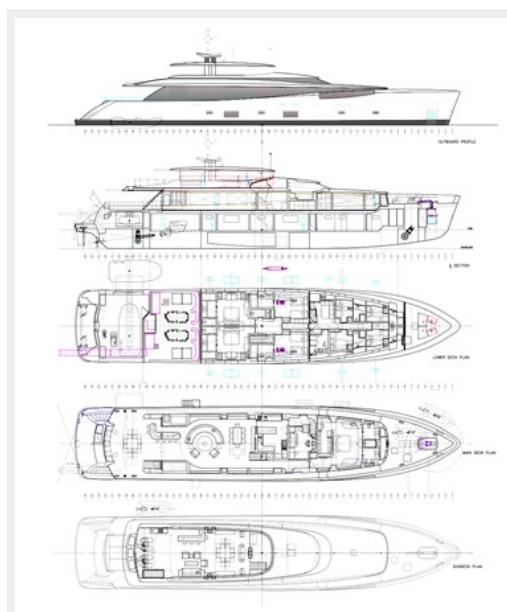
Engine Type: Inboard

PHOTOS









CONTACTS

Andrey Shestakov, leading yacht broker of the sales department of Shestakov Yacht Sales Inc. Shestakov Yacht Sales Inc., the official representative of the Miami/Fort Lauderdale FL headquarters.

Contact details

Email: **andrey@shestakovyachtsales.com**

Web: shestakovyachtsales.com/en/

Telephones

USA: **+1(954)274-4435**

Office hours

Monday – Saturday: **9:00 - 21:00 EDT**

Sunday: **closed**

Address



Harbour Towne Marina, 850 NE 3rd St,
STE 213, Dania, FL 33004