

SEA 2 SEE — DEFEVER



Builder: DEFEVER

Year Built: 1983

Model: trawler

Price: PRICE ON APPLICATION

Location: United States

LOA: 44' (13.41mm)

Beam: 14.75

Min Draft: 4' 7" (1.4mm)

Max Draft: 4' 10" (1.47mm)

Our experienced yacht broker, Andrey Shestakov, will help you choose and buy a yacht that best suits your needs **Sea 2 See — DEFEVER** from our catalogue. Presently, at Shestakov Yacht Sales Inc., we have a wide variety of yachts available on our sale's list. We also work in close contact with all the big yacht manufacturers from all over the world.

If you would like to buy a yacht **Sea 2 See — DEFEVER** or would like help answering any questions concerning purchasing, selling or chartering a yacht, please call **+1(954)274-4435**

TABLE OF CONTENTS

TABLE OF CONTENTS	2
SPECIFICATIONS	6
Overview	6
Basic Information	6
Dimensions	6
Speed, Capacities and Weight	6
Accommodations	6
Hull and Deck Information	7
Engine Information	7
PHOTOS	8
0_2798458_	8
1_2798458_	8
2_2798458_	8
3_2798458_	8
4_2798458_	8
5_2798458_	8
6_2798458_	9
7_2798458_	9
8_2798458_	9
9_2798458_	9
10_2798458_	9
11_2798458_	9
12_2798458_	10
13_2798458_	10
15_2798458_	10
14_2798458_	10
16_2798458_	10
17_2798458_	10

18_2798458_	11
19_2798458_	11
20_2798458_	11
21_2798458_	11
22_2798458_	11
23_2798458_	11
24_2798458_	12
25_2798458_	12
26_2798458_	12
27_2798458_	12
28_2798458_	12
29_2798458_	12
30_2798458_	13
31_2798458_	13
32_2798458_	13
33_2798458_	13
34_2798458_	13
35_2798458_	13
36_2798458_	14
37_2798458_	14
38_2798458_	14
39_2798458_	14
40_2798458_	14
41_2798458_	14
42_2798458_	15
43_2798458_	15
44_2798458_	15
45_2798458_	15
46_2798458_	15

47_2798458_	15
48_2798458_	16
49_2798458_	16
50_2798458_	16
51_2798458_	16
52_2798458_	16
53_2798458_	16
54_2798458_	17
55_2798458_	17
56_2798458_	17
57_2798458_	17
58_2798458_	17
59_2798458_	17
60_2798458_	18
61_2798458_	18
62_2798458_	18
63_2798458_	18
64_2798458_	18
65_2798458_	18
66_2798458_	19
67_2798458_	19
68_2798458_	19
69_2798458_	19
70_2798458_	19
71_2798458_	19
73_2798458_	20
72_2798458_	20
74_2798458_	20
75_2798458_	20

76_2798458_	20
CONTACTS	21
Contact details	21
Telephones	21
Office hours	21
Address	21

SPECIFICATIONS

Overview

Sea 2 See 1983 44' DeFever is a clean vessel with an Awlgrip exterior paint and sky blue non skid decks with no exterior teak making her very updated, crisp and easier to maintain. This vessel has upper and lower helms. Many system overhauls and upgrades including Naiad Stabilizers complete service/fins dropped new seals, new electric heads/plumbing and tank, macerator and fresh water pumps, AGM batteries, Magnum inverter/charger and Bimini with enclosure and complete set of sun screens for the back deck. There is a maintenance log and receipts for the major work kept in binders by the current and past owners. There are boxes of spare parts. Included is a 2005 Nautica 12' tender with 40hp Yamaha. Thank you for checking out the listing and please be sure to page thru all of the listed updates [found below].

Basic Information

Category: trawler

Model Year: 1983

Year Built: 1983

Country: United States

Dimensions

LOA: 44' (13.41mm)

Beam: 14.75

Min Draft: 4' 7" (1.4mm)

Max Draft: 4' 10" (1.47mm)

Speed, Capacities and Weight

Water Capacity: 350 Gallons

Holding Tank: 60 Gal Gallons

Fuel Capacity: 800 Gal Gallons

Accommodations

Total Cabins: 2

Total Heads: 2

Hull and Deck Information

Hull Material: Fiberglass

Engine Information

Engines: 1

Manufacturer: Lehman

PHOTOS

0_2798458_



1_2798458_



2_2798458_



3_2798458_



4_2798458_



5_2798458_



6_2798458_



7_2798458_



8_2798458_



9_2798458_



10_2798458_



11_2798458_



12_2798458_



13_2798458_



14_2798458_



15_2798458_



16_2798458_



17_2798458_



18_2798458_



19_2798458_



20_2798458_



21_2798458_



22_2798458_



23_2798458_



24_2798458_



25_2798458_



26_2798458_



27_2798458_



28_2798458_



29_2798458_



30_2798458_



31_2798458_



32_2798458_



33_2798458_



34_2798458_



35_2798458_



36_2798458_



37_2798458_



38_2798458_



39_2798458_



40_2798458_



41_2798458_



42_2798458_



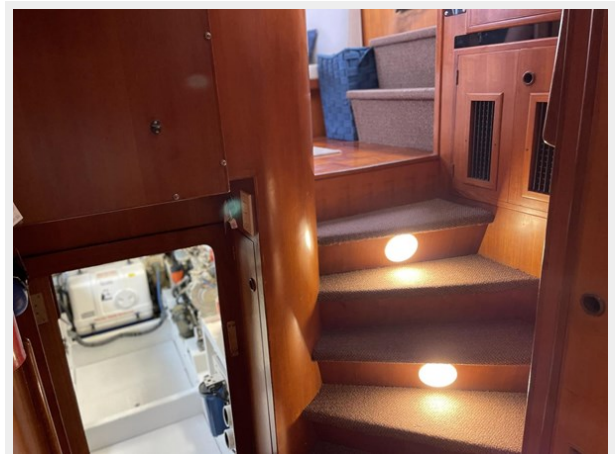
43_2798458_



44_2798458_



45_2798458_



46_2798458_



47_2798458_



48_2798458_



49_2798458_



50_2798458_



51_2798458_



52_2798458_



53_2798458_



54_2798458_



55_2798458_



56_2798458_



57_2798458_



58_2798458_



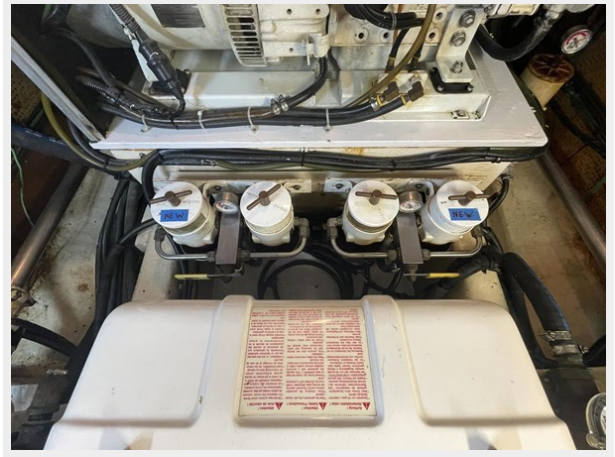
59_2798458_



60_2798458_



61_2798458_



62_2798458_



63_2798458_



64_2798458_



65_2798458_



66_2798458_



67_2798458_



68_2798458_



69_2798458_



70_2798458_



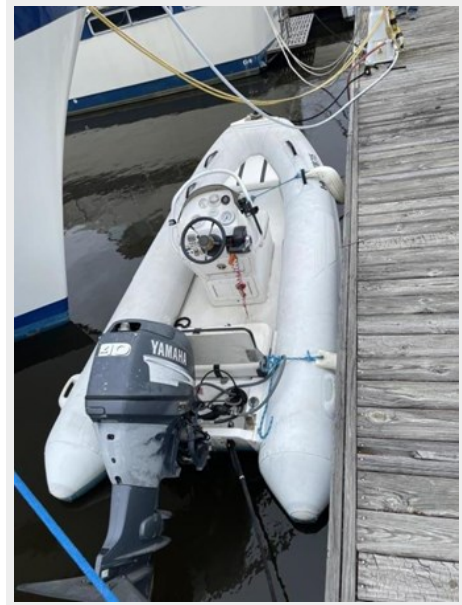
71_2798458_



72_2798458_



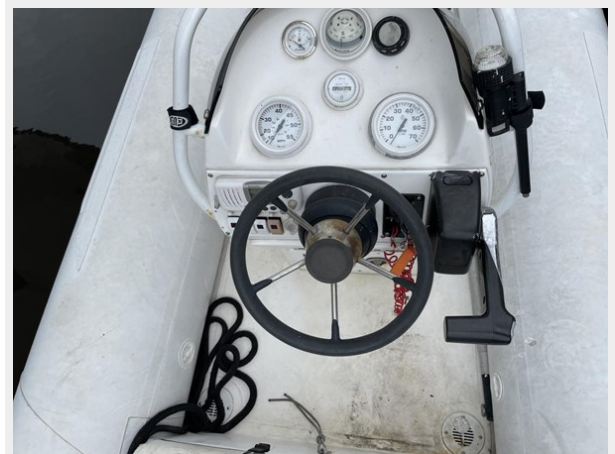
73_2798458_



74_2798458_



75_2798458_



76_2798458_



CONTACTS

Andrey Shestakov, leading yacht broker of the sales department of Shestakov Yacht Sales Inc. Shestakov Yacht Sales Inc., the official representative of the Miami/Fort Lauderdale FL headquarters.

Contact details

Email: andrey@shestakovyachtsales.com

Web: shestakovyachtsales.com/en/

Telephones

USA: +1(954)274-4435

Office hours

Monday – Saturday: **9:00 - 21:00** EDT

Sunday: **closed**

Address



Harbour Towne Marina, 850 NE 3rd St,
STE 213, Dania, FL 33004