

## CAPTIVATOR — WESTPORT



**Builder:** WESTPORT

**Year Built:** 2011

**Model:** Motor Yacht

**Price:** PRICE ON APPLICATION

**Location:** United States

**LOA:** 112' (34.14mm)

**Beam:** 23.75

**Max Draft:** 5' 6" (1.68mm)

**Cruise Speed:** 22 Knots Kts. (25 MPH)

**Max Speed:** 26 Knots Kts. (30 MPH)

Our experienced yacht broker, Andrey Shestakov, will help you choose and buy a yacht that best suits your needs **CAPTIVATOR — WESTPORT** from our catalogue. Presently, at Shestakov Yacht Sales Inc., we have a wide variety of yachts available on our sale's list. We also work in close contact with all the big yacht manufacturers from all over the world.

If you would like to buy a yacht **CAPTIVATOR — WESTPORT** or would like help answering any questions concerning purchasing, selling or chartering a yacht, please call **+1(954)274-4435**

# TABLE OF CONTENTS

TABLE OF CONTENTS	2
SPECIFICATIONS	6
Overview	6
Basic Information	6
Dimensions	6
Speed, Capacities and Weight	6
Accommodations	6
Hull and Deck Information	6
Engine Information	6
PHOTOS	7
IMG_7496	7
DJI_0061	7
DJI_0037	7
DJI_0051	7
112_westport_captivator_bow_01	7
112_westport_captivator_bow_02	7
112_westport_captivator_bow_05	8
112_westport_captivator_bow_07	8
112_westport_captivator_aft_deck_01	8
112_westport_captivator_aft_deck_03	8
112_westport_captivator_aft_deck_05	8
112_westport_captivator_flybridge_02	8
112_westport_captivator_flybridge_04	8
112_westport_captivator_flybridge_05	8
112_westport_captivator_flybridge_08	9
112_westport_captivator_flybridge_12	9
112_westport_captivator_flybridge_14	9
112_westport_captivator_flybridge_16	9

---

112_westport_captivator_flybridge_19	9
112_westport_captivator_flybridge_22	9
112_westport_captivator_flybridge_23	9
112_westport_captivator_flybridge_28	9
112_westport_captivator_flybridge_31	10
112_westport_captivator_flybridge_34	10
Captivator_pilothouse_01	10
Captivator_pilothouse_03	10
Captivator_pilothouse_05	10
Captivator_pilothouse_06	10
112_westport_captivator_salon_01	10
112_westport_captivator_salon_05	10
112_westport_captivator_salon_06	11
112_westport_captivator_salon_07	11
112_westport_captivator_day_head_01	11
112_westport_captivator_dining_02	11
112_westport_captivator_dining_03	11
112_westport_captivator_dining_07	11
Captivator_galley_01	11
Captivator_galley_03	11
Captivator_galley_05	12
Captivator_galley_06	12
112_westport_captivator_lower_foyer_01	12
Captivator_galley_07	12
112_westport_captivator_lower_foyer_02	12
112_westport_captivator_lower_foyer_03	12
112_westport_captivator_master_stateroom_02	12
112_westport_captivator_master_stateroom_04	12
112_westport_captivator_master_stateroom_head_01	13

---

---

112_westport_captivator_master_stateroom_09	13
112_westport_captivator_master_stateroom_head_02	13
112_westport_captivator_master_stateroom_head_04	13
112_westport_captivator_master_stateroom_head_05	13
112_westport_captivator_forward_stateroom_02	13
112_westport_captivator_forward_stateroom_head_02	14
112_westport_captivator_forward_stateroom_05	14
112_westport_captivator_forward_stateroom_head_03	14
112_westport_captivator_starboard_guest_stateroom_02	14
112_westport_captivator_starboard_guest_stateroom_head_01	14
112_westport_captivator_starboard_guest_stateroom_04	14
112_westport_captivator_starboard_guest_stateroom_head_02	15
112_westport_captivator_starboard_guest_stateroom_head_03	15
112_westport_captivator_port_guest_stateroom_02	15
112_westport_captivator_port_guest_stateroom_04	15
112_westport_captivator_port_guest_stateroom_head_01	15
112_westport_captivator_port_guest_stateroom_head_02	15
Captivator_port_foyer_01	16
Captivator_utility_room_01	16
Captivator_crew_01	16
Captivator_crew_02	16
Captivator_crew_04	16
Captivator_crew_05	16
Captivator_crew_07	17
Captivator_crew_09	17
Captivator_crew_13	17
Captivator_crew_11	17
Captivator_crew_14	17
Captivator_engine_room_01	17

---

---

Captivator_engine_room_04	18
Captivator_engine_room_09	18
Captivator_aft_deck_evening_08	18
Captivator_aft_deck_evening_09	18
Captivator_aft_deck_evening_11	18
Captivator_aft_deck_evening_12	18
<b>CONTACTS</b>	<b>19</b>
Contact details	19
Telephones	19
Office hours	19
Address	19

---

## SPECIFICATIONS

---

### Overview

---

N/A

### Basic Information

---

**Category:** Motor Yacht

**Model Year:** 2011

**Year Built:** 2011

**Country:** United States

### Dimensions

---

**LOA:** 112' (34.14mm)

**Beam:** 23.75

**Max Draft:** 5' 6" (1.68mm)

### Speed, Capacities and Weight

---

**Cruise Speed:** 22 Knots Kts. (25 MPH)

**Max Speed:** 26 Knots Kts. (30 MPH)

**Water Capacity:** 1000 Gallons

**Holding Tank:** 500 Gal Gallons

**Fuel Capacity:** 5500 Gal Gallons

### Accommodations

---

**Total Cabins:** 4

**Total Heads:** 5

### Hull and Deck Information

---

**Hull Material:** Fiberglass

### Engine Information

---

**Engines:** 2

**Manufacturer:** MTU

**Engine Type:** Inboard

**Fuel Type:** Diesel

# PHOTOS

IMG\_7496



DJI\_0061



DJI\_0037



DJI\_0051



112\_westport\_captivator\_bow\_01



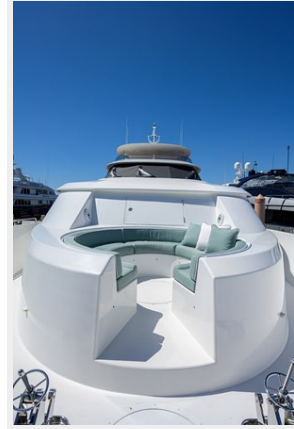
112\_westport\_captivator\_bow\_02



112\_westport\_captivator\_bow\_05



112\_westport\_captivator\_bow\_07



112\_westport\_captivator\_aft\_deck\_01



112\_westport\_captivator\_aft\_deck\_03



112\_westport\_captivator\_aft\_deck\_05



112\_westport\_captivator\_flybridge\_02



112\_westport\_captivator\_flybridge\_04



112\_westport\_captivator\_flybridge\_05





112\_westport\_captivator\_flybridge\_08



112\_westport\_captivator\_flybridge\_12



112\_westport\_captivator\_flybridge\_14



112\_westport\_captivator\_flybridge\_16



112\_westport\_captivator\_flybridge\_19



112\_westport\_captivator\_flybridge\_22



112\_westport\_captivator\_flybridge\_23



112\_westport\_captivator\_flybridge\_28



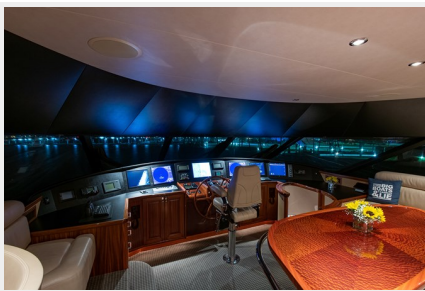
112\_westport\_captivator\_flybridge\_31



112\_westport\_captivator\_flybridge\_34



Captivator\_pilothouse\_01



Captivator\_pilothouse\_03



Captivator\_pilothouse\_05



Captivator\_pilothouse\_06



112\_westport\_captivator\_salon\_01



112\_westport\_captivator\_salon\_05



112\_westport\_captivator\_salon\_06



112\_westport\_captivator\_salon\_07



112\_westport\_captivator\_day\_head\_01



112\_westport\_captivator\_dining\_02



112\_westport\_captivator\_dining\_03



112\_westport\_captivator\_dining\_07



Captivator\_galley\_01



Captivator\_galley\_03



Captivator\_galley\_05



Captivator\_galley\_06



Captivator\_galley\_07



112\_westport\_captivator\_lower\_foyer\_01



112\_westport\_captivator\_lower\_foyer\_02



112\_westport\_captivator\_lower\_foyer\_03



112\_westport\_captivator\_master\_stateroom\_02



112\_westport\_captivator\_master\_stateroom\_04



112\_westport\_captivator\_master\_stateroom\_head\_01



112\_westport\_captivator\_master\_stateroom\_09



112\_westport\_captivator\_master\_stateroom\_head\_02



112\_westport\_captivator\_master\_stateroom\_head\_04



112\_westport\_captivator\_master\_stateroom\_head\_05



112\_westport\_captivator\_forward\_stateroom\_02



112\_westport\_captivator\_forward\_stateroom\_head\_02



112\_westport\_captivator\_forward\_stateroom\_05



112\_westport\_captivator\_forward\_stateroom\_head\_03



112\_westport\_captivator\_starboard\_guest\_stateroom\_02



112\_westport\_captivator\_starboard\_guest\_stateroom\_head\_01



112\_westport\_captivator\_starboard\_guest\_stateroom\_04



112\_westport\_captivator\_starboard\_guest\_stateroom\_head\_02



112\_westport\_captivator\_starboard\_guest\_stateroom\_head\_03



112\_westport\_captivator\_port\_guest\_stateroom\_02



112\_westport\_captivator\_port\_guest\_stateroom\_04



112\_westport\_captivator\_port\_guest\_stateroom\_head\_01



112\_westport\_captivator\_port\_guest\_stateroom\_head\_02



Captivator\_port\_foyer\_01



Captivator\_utility\_room\_01



Captivator\_crew\_01



Captivator\_crew\_02



Captivator\_crew\_04



Captivator\_crew\_05





Captivator\_crew\_07



Captivator\_crew\_09



Captivator\_crew\_13



Captivator\_crew\_11



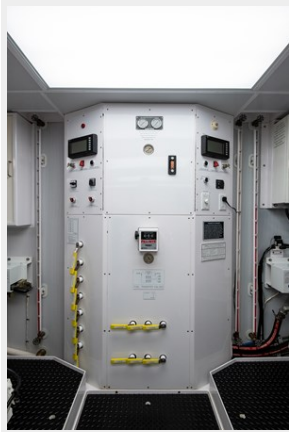
Captivator\_crew\_14



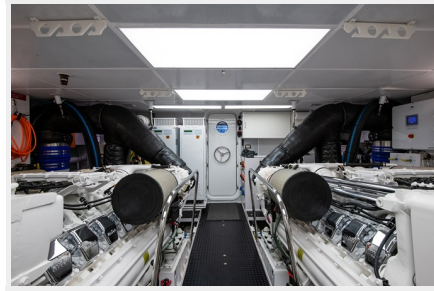
Captivator\_engine\_room\_01



Captivator\_engine\_room\_04



Captivator\_engine\_room\_09



Captivator\_aft\_deck\_evening\_08



Captivator\_aft\_deck\_evening\_09



Captivator\_aft\_deck\_evening\_11



Captivator\_aft\_deck\_evening\_12



## CONTACTS

---

Andrey Shestakov, leading yacht broker of the sales department of Shestakov Yacht Sales Inc. Shestakov Yacht Sales Inc., the official representative of the Miami/Fort Lauderdale FL headquarters.

### Contact details

---

Email:  
[andrey@shestakovyachtsales.com](mailto:andrey@shestakovyachtsales.com)

Web: [shestakovyachtsales.com/en/](http://shestakovyachtsales.com/en/)

### Telephones

---

USA: +1(954)274-4435

### Office hours

---

Monday – Saturday: 9:00 - 21:00 EDT

Sunday: **closed**

### Address

---



Harbour Towne Marina, 850 NE 3rd St,  
STE 213, Dania, FL 33004