

MYU — PALMER JOHNSON



Builder: PALMER JOHNSON

Year Built: 1992

Model: expedition yacht

Price: PRICE ON APPLICATION

Location: N/A

LOA: 90' (27.43m)

Beam: 22

Max Draft: 7' (2.13m)

Cruise Speed: 10 Knots Kts. (12 MPH)

Our experienced yacht broker, Andrey Shestakov, will help you choose and buy a yacht that best suits your needs **MYU — PALMER JOHNSON** from our catalogue. Presently, at Shestakov Yacht Sales Inc., we have a wide variety of yachts available on our sale's list. We also work in close contact with all the big yacht manufacturers from all over the world.

If you would like to buy a yacht **MYU — PALMER JOHNSON** or would like help answering any questions concerning purchasing, selling or chartering a yacht, please call **+1(954)274-4435**

TABLE OF CONTENTS

TABLE OF CONTENTS	2
SPECIFICATIONS	3
Overview	3
Basic Information	3
Dimensions	3
Speed, Capacities and Weight	3
Accommodations	4
Hull and Deck Information	4
Engine Information	4
PHOTOS	5
Main Electrical Panel in Engine Room	8
Hydraulic Manifold	8
Bilge Manifold	8
Refurbished Fuel Lines	9
CONTACTS	10
Contact details	10
Telephones	10
Office hours	10
Address	10

SPECIFICATIONS

Overview

MYU is not your average “marina queen.” This purpose built yacht will appeal to those who wish to explore the world in great comfort and safety in an understated, yet elegant, classic style. Formerly **ASHA**, **MA MU VI** and **HOPE**, this 1992, Palmer Johnson 90 footer is the expression of what it is to live the exciting life exploring all parts of the world—wherever you may wish to go. **MYU** sleeps six owners and guests in three immaculate staterooms, plus four in crew in two cabins. Following is an in-depth spec sheet of everything this yacht has to offer, a description of what is right about a properly outfitted vessel. **MYU** underwent a very extensive mechanical/systems refit at Front Street Shipyard during the winter of 2015. Already a proven transcontinental Expedition yacht, she was made even better and safer with additional redundancy added to every critical system.

WILL ACCEPT CLEAN TRADES!

Basic Information

Category: expedition yacht

Sub Category: Expedition or Explorer

Model Year: 1992

Year Built: 1992

Country: N/A

Dimensions

LOA: 90' (27.43mm)

Beam: 22

Max Draft: 7' (2.13mm)

Speed, Capacities and Weight

Cruise Speed: 10 Knots Kts. (12 MPH)

Cruise Speed Range: 3000

Gross Tonnage: 139 Pounds

Water Capacity: 1860 Gallons

Holding Tank: 930 Gal Gallons

Fuel Capacity: 5800 Gal Gallons

Accommodations

Total Cabins: 3

Sleeps: 6

Total Heads: 4

Crew Berths: 3

Hull and Deck Information

Hull Material: Aluminum

Deck Material: Teak

Hull Configuration: Full Displacement

Hull Designer: Dick Boon

Exterior Designer: Dick Boon/Palmer
Johnson

Engine Information

Engines: 2

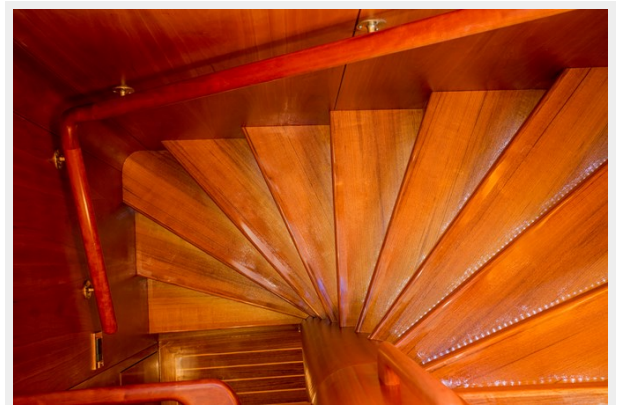
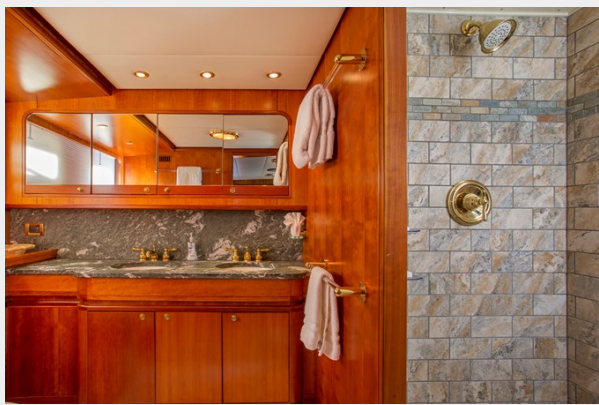
Manufacturer: Caterpillar

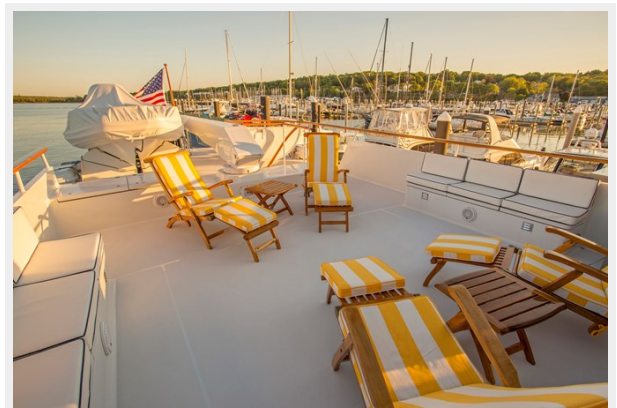
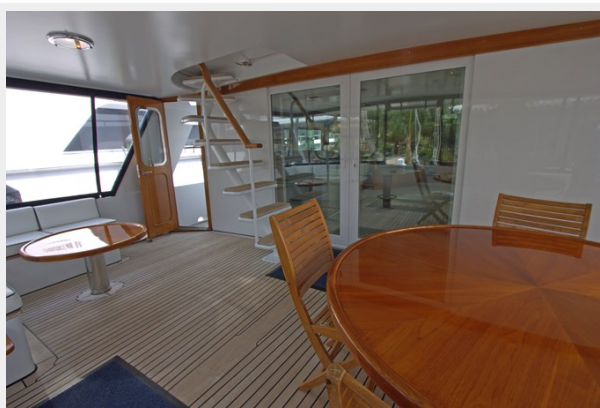
Engine Type: Inboard

Fuel Type: Diesel

PHOTOS









Main Electrical Panel in Engine Room



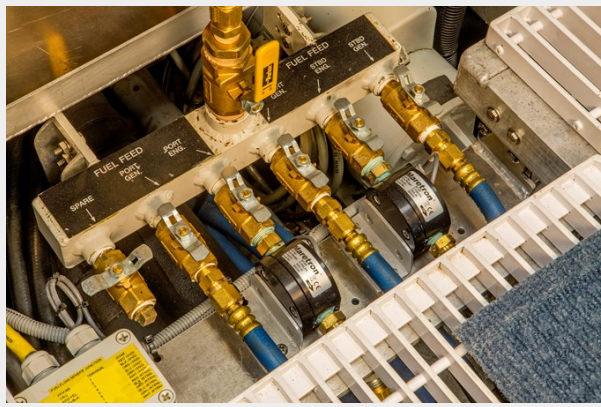
Hydraulic Manifold



Bilge Manifold



Refurbished Fuel Lines



CONTACTS

Andrey Shestakov, leading yacht broker of the sales department of Shestakov Yacht Sales Inc. Shestakov Yacht Sales Inc., the official representative of the Miami/Fort Lauderdale FL headquarters.

Contact details

Email: andrey@shestakovyachtsales.com

Web: shestakovyachtsales.com/en/

Telephones

USA: +1(954)274-4435

Office hours

Monday – Saturday: **9:00 - 21:00** EDT

Sunday: **closed**

Address



Harbour Towne Marina, 850 NE 3rd St,
STE 213, Dania, FL 33004