

## TRUE NORTH — VISTA



**Builder:** VISTA

**LOA:** 43' (13.11mm)

**Year Built:** 1989

**Beam:** 15.41

**Model:** Aft Cabin

**Price:** PRICE ON APPLICATION

**Location:** United States

Our experienced yacht broker, Andrey Shestakov, will help you choose and buy a yacht that best suits your needs **True North — VISTA** from our catalogue. Presently, at Shestakov Yacht Sales Inc., we have a wide variety of yachts available on our sale's list. We also work in close contact with all the big yacht manufacturers from all over the world.

If you would like to buy a yacht **True North — VISTA** or would like help answering any questions concerning purchasing, selling or chartering a yacht, please call **+1(954)274-4435**

# TABLE OF CONTENTS

TABLE OF CONTENTS	2
SPECIFICATIONS	5
Overview	5
Basic Information	5
Dimensions	5
Speed, Capacities and Weight	6
Accommodations	6
Hull and Deck Information	6
Engine Information	6
PHOTOS	7
8844945_20230505070732707_1_XLARGE	7
8844945_20230505070734580_1_XLARGE	7
8844945_20230505070728259_1_XLARGE	7
8844945_20230505070726462_1_XLARGE	7
8844945_20230505070742780_1_XLARGE	8
8844945_20230505070744048_1_XLARGE	8
8844945_20230505070745070_1_XLARGE	8
8844945_20230505070746564_1_XLARGE	8
8844945_20230505070748569_1_XLARGE	8
8844945_20230505070754695_1_XLARGE	8
8844945_20230505070750673_1_XLARGE	9
8844945_20230505070752795_1_XLARGE	9
8844945_20230505070804670_1_XLARGE	9
8844945_20230505070758704_1_XLARGE	9
8844945_20230505070802131_1_XLARGE	9
8844945_20230505070818619_1_XLARGE	9
8844945_20230505070822694_1_XLARGE	10
8844945_20230505070756749_1_XLARGE	10

---

8844945_20230505070806470_1_XLARGE	10
8844945_20230505070809565_1_XLARGE	10
8844945_20230505070740614_1_XLARGE	10
8844945_20230505070738616_1_XLARGE	10
8844945_20230505070820656_1_XLARGE	11
8844945_20230505070824562_1_XLARGE	11
8844945_20230505070826536_1_XLARGE	11
8844945_20230505070832756_1_XLARGE	11
8844945_20230505070828583_1_XLARGE	11
8844945_20230505070830827_1_XLARGE	11
8844945_20230505070834820_1_XLARGE	12
8844945_20230505070836744_1_XLARGE	12
8844945_20230505070816430_1_XLARGE	12
8844945_20230505070813966_1_XLARGE	12
8844945_20230505070811407_1_XLARGE	12
8844945_20230505070844715_1_XLARGE	12
8844945_20230505070842796_1_XLARGE	13
8844945_20230505070840784_1_XLARGE	13
8844945_20230505070838721_1_XLARGE	13
8844945_20230505070856819_1_XLARGE	13
8844945_20230505070854867_1_XLARGE	13
8844945_20230505070846644_1_XLARGE	13
8844945_20230505070848836_1_XLARGE	14
8844945_20230505070850801_1_XLARGE	14
8844945_20230505070901089_1_XLARGE	14
8844945_20230505070902996_1_XLARGE	14
8844945_20230505070858855_1_XLARGE	14
8844945_20230505070905997_1_XLARGE	14
8844945_20230505070913215_1_XLARGE	15

---

---

8844945_20230505070909738_1_XLARGE	15
8844945_20230505070915973_1_XLARGE	15
8844945_20230505070919035_1_XLARGE	15
8844945_20230505070852773_1_XLARGE	16
8844945_20230505070925205_1_XLARGE	16
8844945_20230505070930369_1_XLARGE	16
8844945_20230505070927820_1_XLARGE	16
8844945_20230505070922123_1_XLARGE	16
8844945_20230505070932456_1_XLARGE	16
8844945_20230505070936185_1_XLARGE	17
8844945_20230505070934311_1_XLARGE	17
8844945_20230505070944615_1_XLARGE	17
8844945_20230505070946749_1_XLARGE	17
8844945_20230505070938464_1_XLARGE	17
8844945_20230505070954633_1_XLARGE	17
8844945_20230505070940397_1_XLARGE	18
8844945_20230505070942620_1_XLARGE	18
8844945_20230505070948511_1_XLARGE	18
8844945_20230505070950475_1_XLARGE	18
8844945_20230505070952618_1_XLARGE	18
8844945_20230505070956521_1_XLARGE	18
8844945_20230505070958446_1_XLARGE	19
8844945_20230505071000847_1_XLARGE	19
8844945_20230505070736556_1_XLARGE	19
CONTACTS	20
Contact details	20
Telephones	20
Office hours	20
Address	20

---

# SPECIFICATIONS

---

## Overview

---

A 1989 Vista Motor Yacht ready for the Great Loop, including full tanks of fuel.

This Vista 43 is set up for cruising. True North offers reliable twin CAT 3208 with only 1560 and 1532 hrs. on the engines and a low 63 hrs. on a 6.5KW genset. True North offers a bow thruster for tight maneuvering, with a new battery. An updated large set of batteries (8 house and dedicated batteries for each engine and genset), 4 new large solar panels (190 watts each), keeps everything charged and a 3kw inverter will keep your refrigerator running for a long time at anchor. A feature of True North is working stabilizers to help with the rocking while making longer runs offshore. Electronics include updated Garmin X5 Color Chart plotter (AIS 2000) with Radar with 2 smaller Garmin Color plotter below, and new updated Autopilot.

The flybridge is easy access from the aft deck, and offers plenty of seating. On the colder days, you have your option of an inside helm with a captain's door, as well as Flying Bridge controls.

The engine room has easy access around both engines, includes oil changing system, fuel filter monitor, as well as air filter monitors.

A large covered Aft deck with refrigeration, storage and access to the swim platform & dinghy. The interior is very roomy and will accommodate comfortably 6 passengers, two in the forward second stateroom with ensuite head. Two in the main salon with a pull-out sofa bed, and two in the well-appointed aft master stateroom. The galley is open with microwave, oven, cooktop, and the settee will seat six comfortably. All furniture, TV with soundbar make for a comfortable saloon. Apartment sized Washer & Dryer.

This boat comes with the dinghy davits, Caribe dinghy and Spirit 1.0 electric motor.

## Basic Information

---

**Category:** Aft Cabin

**Sub Category:** Aft Cabin

**Model Year:** 1989

**Year Built:** 1989

**Country:** United States

## Dimensions

---

**LOA:** 43' (13.11mm)

**Beam:** 15.41

---

## Speed, Capacities and Weight

---

**Water Capacity:** 80 Gallons

**Holding Tank:** 50 Gal Gallons

**Fuel Capacity:** 500 Gal Gallons

---

## Accommodations

---

**Total Cabins:** 2

---

## Hull and Deck Information

---

**Hull Material:** Fiberglass

---

## Engine Information

---

**Engines:** 2

**Manufacturer:** Caterpillar

**Engine Type:** Inboard

**Fuel Type:** Diesel

# PHOTOS

8844945\_20230505070732707\_1\_XLARGE



8844945\_20230505070734580\_1\_XLARGE



8844945\_20230505070728259\_1\_XLARGE



8844945\_20230505070726462\_1\_XLARGE



8844945\_20230505070742780\_1\_XLARGE



8844945\_20230505070744048\_1\_XLARGE



8844945\_20230505070745070\_1\_XLARGE



8844945\_20230505070746564\_1\_XLARGE



8844945\_20230505070748569\_1\_XLARGE



8844945\_20230505070754695\_1\_XLARGE





8844945\_20230505070750673\_1\_XLARGE



8844945\_20230505070752795\_1\_XLARGE



8844945\_20230505070804670\_1\_XLARGE



8844945\_20230505070758704\_1\_XLARGE



8844945\_20230505070802131\_1\_XLARGE



8844945\_20230505070818619\_1\_XLARGE



8844945\_20230505070822694\_1\_XLARGE



8844945\_20230505070756749\_1\_XLARGE



8844945\_20230505070806470\_1\_XLARGE



8844945\_20230505070809565\_1\_XLARGE



8844945\_20230505070740614\_1\_XLARGE



8844945\_20230505070738616\_1\_XLARGE



8844945\_20230505070820656\_1\_XLARGE



8844945\_20230505070824562\_1\_XLARGE



8844945\_20230505070826536\_1\_XLARGE



8844945\_20230505070832756\_1\_XLARGE



8844945\_20230505070828583\_1\_XLARGE



8844945\_20230505070830827\_1\_XLARGE



8844945\_20230505070834820\_1\_XLARGE



8844945\_20230505070836744\_1\_XLARGE



8844945\_20230505070816430\_1\_XLARGE



8844945\_20230505070813966\_1\_XLARGE



8844945\_20230505070811407\_1\_XLARGE



8844945\_20230505070844715\_1\_XLARGE



8844945\_20230505070842796\_1\_XLARGE



8844945\_20230505070840784\_1\_XLARGE



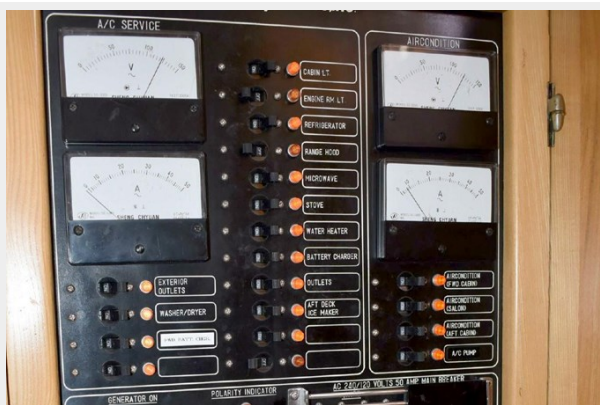
8844945\_20230505070838721\_1\_XLARGE



8844945\_20230505070856819\_1\_XLARGE



8844945\_20230505070854867\_1\_XLARGE



8844945\_20230505070846644\_1\_XLARGE



8844945\_20230505070848836\_1\_XLARGE



8844945\_20230505070850801\_1\_XLARGE



8844945\_20230505070901089\_1\_XLARGE



8844945\_20230505070902996\_1\_XLARGE



8844945\_20230505070858855\_1\_XLARGE



8844945\_20230505070905997\_1\_XLARGE



8844945\_20230505070913215\_1\_XLARGE

8844945\_20230505070909738\_1\_XLARGE



8844945\_20230505070915973\_1\_XLARGE

8844945\_20230505070919035\_1\_XLARGE



8844945\_20230505070852773\_1\_XLARGE



8844945\_20230505070925205\_1\_XLARGE



8844945\_20230505070930369\_1\_XLARGE



8844945\_20230505070927820\_1\_XLARGE



8844945\_20230505070922123\_1\_XLARGE



8844945\_20230505070932456\_1\_XLARGE





8844945\_20230505070936185\_1\_XLARGE



8844945\_20230505070934311\_1\_XLARGE



8844945\_20230505070944615\_1\_XLARGE



8844945\_20230505070946749\_1\_XLARGE



8844945\_20230505070938464\_1\_XLARGE



8844945\_20230505070954633\_1\_XLARGE



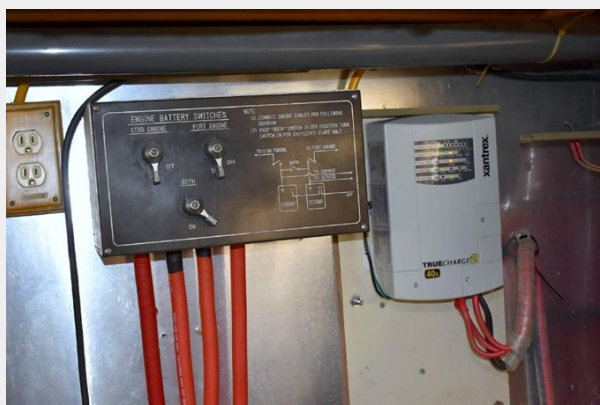
8844945\_20230505070940397\_1\_XLARGE



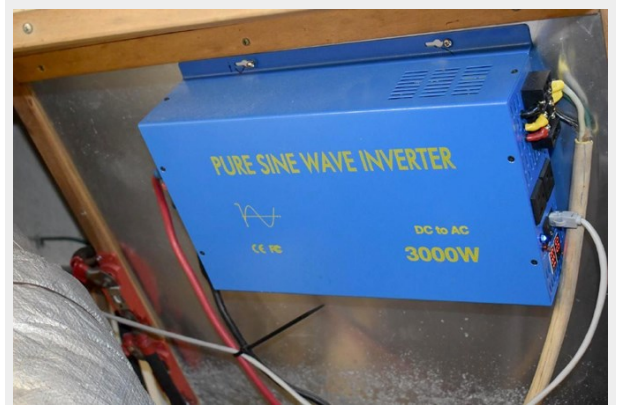
8844945\_20230505070942620\_1\_XLARGE



8844945\_20230505070948511\_1\_XLARGE



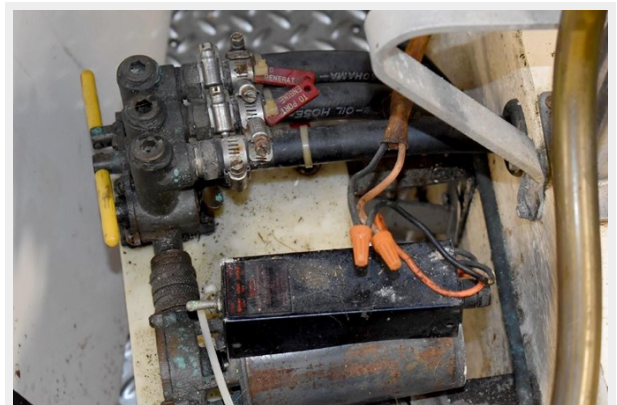
8844945\_20230505070950475\_1\_XLARGE



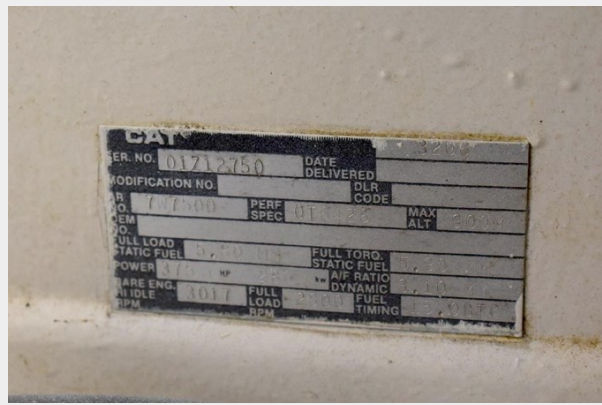
8844945\_20230505070952618\_1\_XLARGE



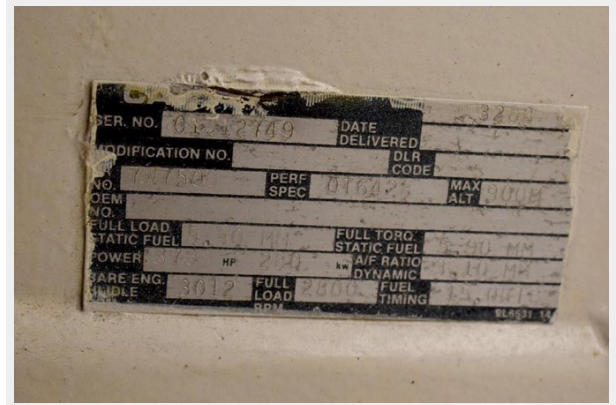
8844945\_20230505070956521\_1\_XLARGE



8844945\_20230505070958446\_1\_XLARGE



8844945\_20230505071000847\_1\_XLARGE



8844945\_20230505070736556\_1\_XLARGE



# CONTACTS

---

Andrey Shestakov, leading yacht broker of the sales department of Shestakov Yacht Sales Inc. Shestakov Yacht Sales Inc., the official representative of the Miami/Fort Lauderdale FL headquarters.

## Contact details

---

Email: [andrey@shestakovyachtsales.com](mailto:andrey@shestakovyachtsales.com)

Web: [shestakovyachtsales.com/en/](http://shestakovyachtsales.com/en/)

## Telephones

---

USA: +1(954)274-4435

## Office hours

---

Monday – Saturday: **9:00 - 21:00** EDT

Sunday: **closed**

## Address

---



Harbour Towne Marina, 850 NE 3rd St,  
STE 213, Dania, FL 33004