

ELTON — WINDSHIP YACHTS



Builder: WINDSHIP YACHTS

Year Built: 1992

Model: Other

Price: €1,250,000 EUR

Location: France

LOA: 104' (31.7mm)

Beam: 23.62

Max Draft: 11' 6" (3.5mm)

Cruise Speed: 9 Knots Kts. (10 MPH)

Max Speed: 14 Knots Kts. (16 MPH)

Our experienced yacht broker, Andrey Shestakov, will help you choose and buy a yacht that best suits your needs **ELTON — WINDSHIP YACHTS** from our catalogue. Presently, at Shestakov Yacht Sales Inc., we have a wide variety of yachts available on our sale's list. We also work in close contact with all the big yacht manufacturers from all over the world.

If you would like to buy a yacht **ELTON — WINDSHIP YACHTS** or would like help answering any questions concerning purchasing, selling or chartering a yacht, please call **+1(954)274-4435**

TABLE OF CONTENTS

| | |
|------------------------------|---|
| TABLE OF CONTENTS | 2 |
| SPECIFICATIONS | 3 |
| Overview | 3 |
| Basic Information | 3 |
| Dimensions | 4 |
| Speed, Capacities and Weight | 4 |
| Accommodations | 4 |
| Hull and Deck Information | 4 |
| Engine Information | 4 |
| PHOTOS | 5 |
| DJI_0594 | 5 |
| DJI_0596 | 5 |
| P1180513 | 5 |
| DJI_0600 | 5 |
| P1180549 | 5 |
| P1180571 | 5 |
| P1180581 | 6 |
| P1180629 | 6 |
| P1180635 | 6 |
| P1180646 | 6 |
| P1180648 | 6 |
| P1180657 | 6 |
| CONTACTS | 7 |
| Contact details | 7 |
| Telephones | 7 |
| Office hours | 7 |
| Address | 7 |

SPECIFICATIONS

Overview

Built by Windship Trident in 1992, with a full service in 2023 and an interior refit and new rigging in 202, at 31.7m, S/Y Elton (ex Lunar Mist, Cinderella II) offers charter guests a spacious and stylish approach to sailing. Her 2023 service included all of the yacht's major technical components, engine, generators, bow thrusters etc, while her major refit in 2021 saw her turned into an elegant and spacious option for those seeking a luxury sailing experience.

During the refit the mast was taken down and fully restored and the interior received all new upholstery, new panelling, new artwork and new linens and finishings, giving her a fresh and contemporary look. The vessel's sophisticated exterior design and engineering are the work of Tripp Design, while her timeless interior is the work of renowned superyacht designer Donald Starkey. She accommodates up to eight guests overnight with up to three crew members to ensure guests have an exquisitely comfortable and luxurious experience throughout every charter.

Performance wise, a top speed of 14 knots and a cruising speed of 9 knots ensure relaxed sailing and excellent performance on the water, with propulsion from a diesel powered Lugger engine, with 15,000 hours to date.

The aft deck serves as the perfect place for guests to unwind in the sun, with an optional Bimini when shade is required. There are C-shaped sofas either side and a large table for alfresco group dining and cocktails on an evening. The stern leads down to the swim platform, where the swim ladder grants easy access to the ocean. All cabins are en-suite and have a double bed, plenty of wardrobe space and a skylight for plenty of natural illumination. The Master en-suite has a bathtub and shower, plus a vanity and head. The other en-suite bathrooms all feature a vanity, head and shower.

Expect a true taste of sailing in optimum comfort.

Basic Information

Category: Other

Model Year: 1992

Year Built: 1992

Country: France

Dimensions

LOA: 104' (31.7mm)

Beam: 23.62

Max Draft: 11' 6" (3.5mm)

Speed, Capacities and Weight

Cruise Speed: 9 Knots Kts. (10 MPH)

Cruise Speed Range: 1900

Max Speed: 14 Knots Kts. (16 MPH)

Gross Tonnage: 98 Pounds

Water Capacity: 3785 Gallons

Fuel Capacity: 1921.59 Gal Gallons

Fuel Consumption: 9.25 Gal Gallons

Accommodations

Total Cabins: 4

Hull and Deck Information

Hull Material: GRP

Deck Material: Teak

Exterior Designer: Tripp Design

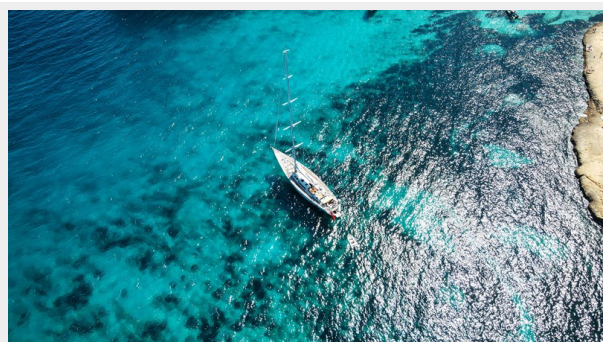
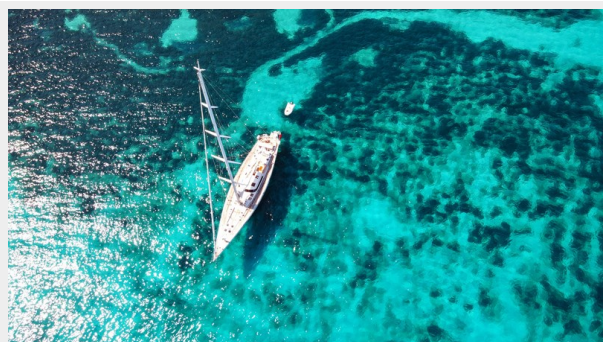
Interior Designer: Donald Starkey

Engine Information

Engines: 1

Manufacturer: Lugger

PHOTOS

DJI_0594**DJI_0596****DJI_0600****P1180513****P1180549****P1180571**

P1180581



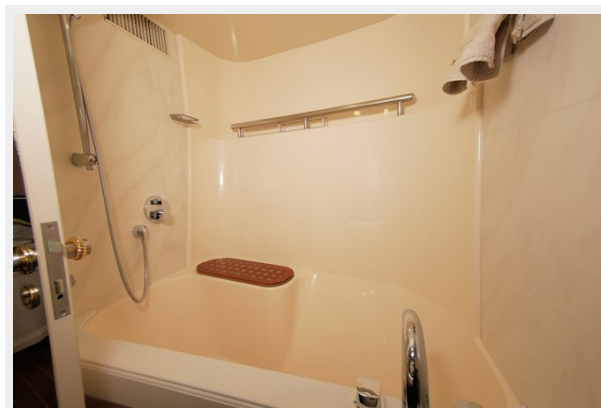
P1180629



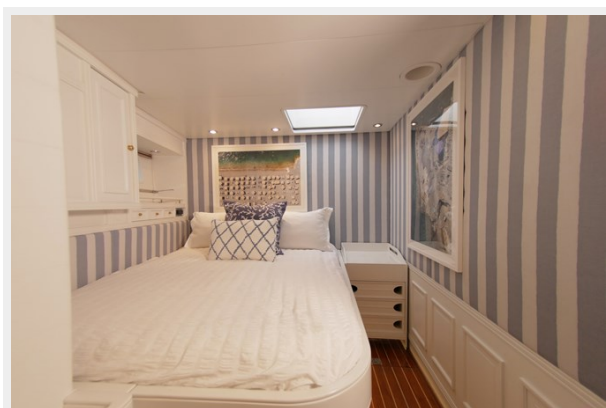
P1180635



P1180646



P1180648



P1180657



CONTACTS

Andrey Shestakov, leading yacht broker of the sales department of Shestakov Yacht Sales Inc. Shestakov Yacht Sales Inc., the official representative of the Miami/Fort Lauderdale FL headquarters.

Contact details

Email: **andrey@shestakovyachtsales.com**

Web: shestakovyachtsales.com/en/

Telephones

USA: **+1(954)274-4435**

Office hours

Monday – Saturday: **9:00 - 21:00 EDT**

Sunday: **closed**

Address



Harbour Towne Marina, 850 NE 3rd St,
STE 213, Dania, FL 33004