

VICTORY — HATTERAS



Builder: HATTERAS

Year Built: 2008

Model: Flybridge

Price: PRICE ON APPLICATION

Location: United States

LOA: 80' (24.38mm)

Beam: 21.25

Max Draft: 5' 4" (1.63mm)

Cruise Speed: 19 Knots Kts. (22 MPH)

Max Speed: 23 Knots Kts. (26 MPH)

Our experienced yacht broker, Andrey Shestakov, will help you choose and buy a yacht that best suits your needs **Victory — HATTERAS** from our catalogue. Presently, at Shestakov Yacht Sales Inc., we have a wide variety of yachts available on our sale's list. We also work in close contact with all the big yacht manufacturers from all over the world.

If you would like to buy a yacht **Victory — HATTERAS** or would like help answering any questions concerning purchasing, selling or chartering a yacht, please call **+1(954)274-4435**

TABLE OF CONTENTS

TABLE OF CONTENTS	2
SPECIFICATIONS	3
Overview	3
Basic Information	4
Dimensions	4
Speed, Capacities and Weight	4
Accommodations	4
Hull and Deck Information	4
Engine Information	5
PHOTOS	6
Pursuit tender not included with sale	6
CONTACTS	12
Contact details	12
Telephones	12
Office hours	12
Address	12

SPECIFICATIONS

Overview

VICTORY is an 80' Hatteras that has been consistently upgraded and immaculately maintained by knowledgeable owners since new. She features a four stateroom layout with full beam master stateroom with his and her baths. She also features an open flybridge with a custom hardtop and a full EZ2CY clear enclosure which allows the bridge deck to be fully enclosed during bad weather periods or opened during nice weather. An air-conditioned bridge also provides a comfortable setting while cruising or entertaining on extremely hot days. The flybridge also features a built-in hot tub, custom sunpad lounges, full wet bar, propane gas BBQ grill and LED flat screen TV. Aft on the bridge deck, is open area with outdoor upholstered seating (new 2023). An overhead sail cloth awning with tension posts is installed on the aft bridge deck to allow the area to be shaded or it can be removed for sun and night sky at the owners request. The entire bridge deck is ideal for entertaining in all weather conditions and has many features only found on much larger vessels. Boarding the vessel aft from her new 8-step Marquipt boarding ladder one arrives onto the aft deck which offers alfresco dining with a large teak table, built-in settee and custom chairs. The aft deck has a solid teak sole with stairs down to swim platform and up to bridge deck and an automatic custom curved glass and stainless entry door to the main salon. Entering the main salon from the aft deck it quickly becomes apparent you are about to inspect one of the finest 80' Hatteras motor yachts ever built. Her custom joinery features a high gloss cherry wood with a detailed overhead wood design, entertainment center with a 50" HD TV on a lift to starboard and a custom upholstered sofa to port. Forward in the main salon is a formal dining table with seating for (6) guests, custom built-in china cabinets on the forward bulkhead, port and starboard buffet cabinets with marble tops and a custom wood soffit w/ lighting over the table. All flooring, headliners and most furniture was new in 2022. Forward of the formal dining area is a fully equipped galley with a stainless Sub-zero refrigerator/freezer, granite countertops and a center island. Forward is a dinette with L-shaped upholster seating and three sitting stools which can seat 6 to 8 guests comfortably. The galley area also features stairs up to the flybridge, a pocket door to port out to the foredeck and large windows forward providing plenty of light and an outside view. The VICTORY accommodates (8) guests in (4) staterooms consisting of a full beam king master stateroom w/ his & her baths, (2) VIP queen staterooms and a twin stateroom all equipped with full entertainment centers and private baths all located on the lower deck. Each stateroom is well appointed with decorator comforters, pillows and pillow shams.

Powered by Caterpillar C32's engines with 1650HP, VICTORY cruises comfortably at 19 knots with a max speed of 23 knots. Additional equipment includes Onan 27.5 KW Generators, 1400 GPD watermakers, stabilizers w/Trac display, bow and stern thruster, underwater lights and full array of electronics are only a few key features this vessel offers. VICTORY is a vessel you must see when shopping the 75' to 100' motor yacht market.

Basic Information

Category: Flybridge

Sub Category: Flybridge

Model Year: 2008

Year Built: 2008

Country: United States

Dimensions

LOA: 80' (24.38mm)

LWL: 80' (24.38mm)

LOD: 80' (24.38mm)

Beam: 21.25

Max Draft: 5' 4" (1.63mm)

Speed, Capacities and Weight

Cruise Speed: 19 Knots Kts. (22 MPH)

Max Speed: 23 Knots Kts. (26 MPH)

Water Capacity: 326 Gallons

Holding Tank: 388 Gal Gallons

Fuel Capacity: 2858 Gal Gallons

Accommodations

Total Cabins: 4

Sleeps: 8

Total Heads: 5

Crew Berths: 3

Hull and Deck Information

Hull Material: Fiberglass

Hull Designer: Hatteras

Engine Information

Engines: 2

Manufacturer: Caterpillar

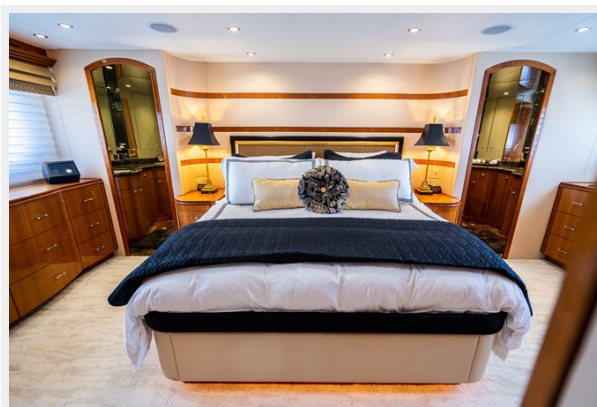
Engine Type: Inboard

Fuel Type: Diesel

PHOTOS

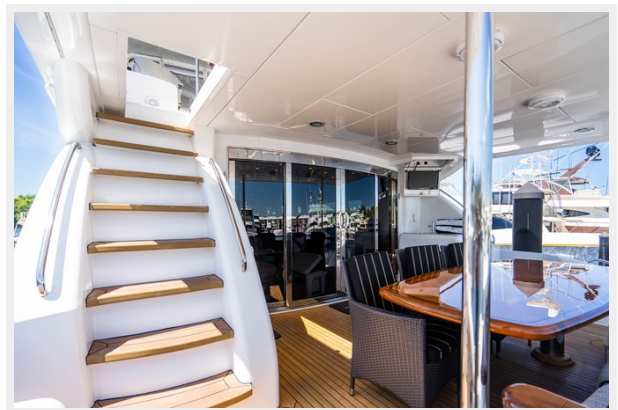
Pursuit tender not included with sale

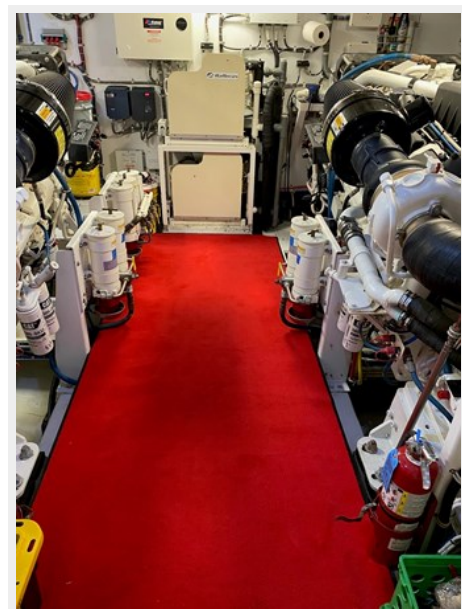
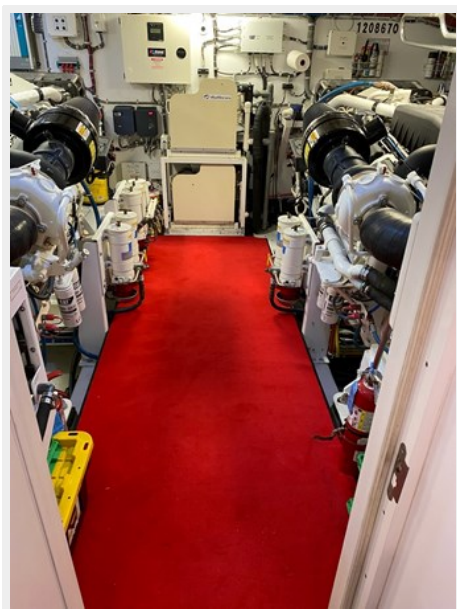
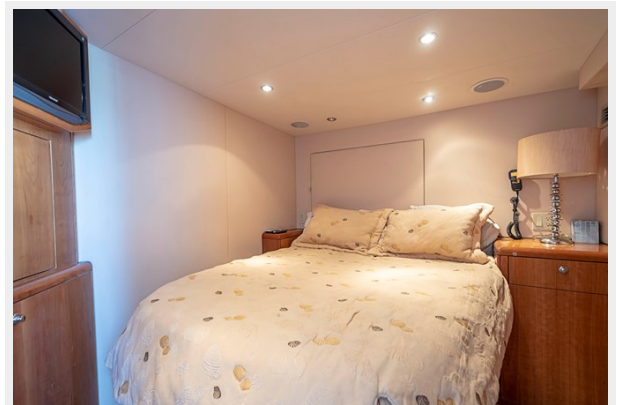












CONTACTS

Andrey Shestakov, leading yacht broker of the sales department of Shestakov Yacht Sales Inc. Shestakov Yacht Sales Inc., the official representative of the Miami/Fort Lauderdale FL headquarters.

Contact details

Email: **andrey@shestakovyachtsales.com**

Web: shestakovyachtsales.com/en/

Telephones

USA: **+1(954)274-4435**

Office hours

Monday – Saturday: **9:00 - 21:00 EDT**

Sunday: **closed**

Address



Harbour Towne Marina, 850 NE 3rd St,
STE 213, Dania, FL 33004