

VICTORY — HATTERAS



Судостроитель: HATTERAS

Год постройки: 2008

Модель: Flybridge

Цена: **ЦЕНА ЯХТЫ ПО ЗАПРОСУ**

Местонахождение: United States

Длина общая: 80' (24.38m)

Ширина: 21.25

Макс. осадка: 5' 4" (1.63m)

Крейс. скорость: 19 Knots Kts. (22 MPH)

Макс. скорость: 23 Knots Kts. (26 MPH)

Купить **Victory — HATTERAS** а также выбрать подходящую вам яхту из нашего каталога яхт вам поможет опытный яхтенный брокер Андрей Шестаков. На сегодняшний день компания **Shestakov Yacht Sales Inc.** имеет большое количество яхт в собственном списке продаж, а также тесно сотрудничает со всеми крупными яхтенными производителями по всему миру.

Для того чтобы купить яхту **Victory — HATTERAS** а также проконсультироваться по любому вопросу связанному с покупкой, продажей, чартером яхт позвоните по телефону **+7(918)465-66-44**.

ОГЛАВЛЕНИЕ

ОГЛАВЛЕНИЕ	2
ХАРАКТЕРИСТИКИ	3
Обзор	3
Основная информация	4
Размеры	4
Скорость, вместимость и масса	4
Размещение	4
Корпус и палуба	4
Информация о двигателе	5
ФОТОГРАФИИ	6
Pursuit tender not included with sale	6
КОНТАКТЫ	12
Контактная информация	12
Телефоны	12
Время работы	12
Адрес	12

ХАРАКТЕРИСТИКИ

Обзор

VICTORY is an 80' Hatteras that has been consistently upgraded and immaculately maintained by knowledgeable owners since new. She features a four stateroom layout with full beam master stateroom with his and her baths. She also features an open flybridge with a custom hardtop and a full EZ2CY clear enclosure which allows the bridge deck to be fully enclosed during bad weather periods or opened during nice weather. An air-conditioned bridge also provides a comfortable setting while cruising or entertaining on extremely hot days. The flybridge also features a built-in hot tub, custom sunpad lounges, full wet bar, propane gas BBQ grill and LED flat screen TV. Aft on the bridge deck, is open area with outdoor upholstered seating (new 2023). An overhead sail cloth awning with tension posts is installed on the aft bridge deck to allow the area to be shaded or it can be removed for sun and night sky at the owners request. The entire bridge deck is ideal for entertaining in all weather conditions and has many features only found on much larger vessels. Boarding the vessel aft from her new 8-step Marquipt boarding ladder one arrives onto the aft deck which offers alfresco dining with a large teak table, built-in settee and custom chairs. The aft deck has a solid teak sole with stairs down to swim platform and up to bridge deck and an automatic custom curved glass and stainless entry door to the main salon. Entering the main salon from the aft deck it quickly becomes apparent you are about to inspect one of the finest 80' Hatteras motor yachts ever built. Her custom joinery features a high gloss cherry wood with a detailed overhead wood design, entertainment center with a 50" HD TV on a lift to starboard and a custom upholstered sofa to port. Forward in the main salon is a formal dining table with seating for (6) guests, custom built-in china cabinets on the forward bulkhead, port and starboard buffet cabinets with marble tops and a custom wood soffit w/ lighting over the table. All flooring, headliners and most furniture was new in 2022. Forward of the formal dining area is a fully equipped galley with a stainless Sub-zero refrigerator/freezer, granite countertops and a center island. Forward is a dinette with L-shaped upholster seating and three sitting stools which can seat 6 to 8 guests comfortably. The galley area also features stairs up to the flybridge, a pocket door to port out to the foredeck and large windows forward providing plenty of light and an outside view.. The VICTORY accommodates (8) guests in (4) staterooms consisting of a full beam king master stateroom w/ his & her baths, (2) VIP queen staterooms and a twin stateroom all equipped with full entertainment centers and private baths all located on the lower deck. Each stateroom is well appointed with decorator comforters, pillows and pillow shams.

Powered by Caterpillar C32's engines with 1650HP, VICTORY cruises comfortably at 19 knots with a max speed of 23 knots. Additional equipment includes Onan 27.5 KW Generators, 1400 GPD watermakers, stabilizers w/Trac display, bow and stern thruster, underwater lights and full array of electronics are only a few key features this vessel offers. VICTORY is a vessel you must see when shopping the 75' to 100' motor yacht market.

Основная информация

Тип судна: Flybridge

Подкатегория: Flybridge

Модельный год: 2008

Год постройки: 2008

Страна: United States

Размеры

Длина общая: 80' (24.38mm)

Длина по ватерлинии: 80' (24.38mm)

Длина палубы: 80' (24.38mm)

Ширина: 21.25

Макс. осадка: 5' 4" (1.63mm)

Скорость, вместимость и масса

Крейс. скорость: 19 Knots Kts. (22 MPH)

Макс. скорость: 23 Knots Kts. (26 MPH)

Вместимость воды: 326 Gallons

Вместимость сточного бака: 388 Gal
Gallons

Объем топливного бака: 2858 Gal
Gallons

Размещение

Всего кают: 4

Спальные места: 8

Всего ком. состава: 5

Койки экипажа: 3

Корпус и палуба

Материал корпуса: Fiberglass

Дизайнер корпуса: Hatteras

Информация о двигателе

Двигатели: 2

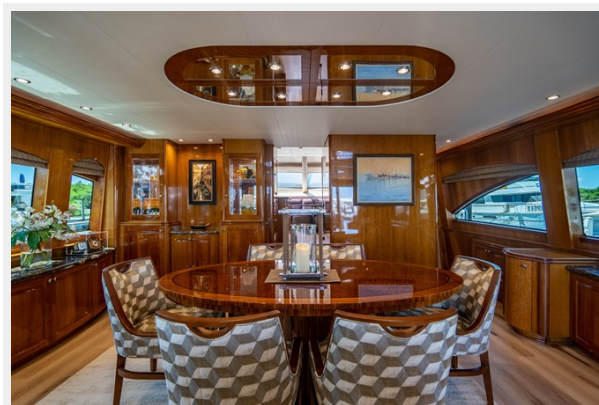
Производитель: Caterpillar

Тип двигателя: Inboard

Тип топлива: Diesel

ФОТОГРАФИИ

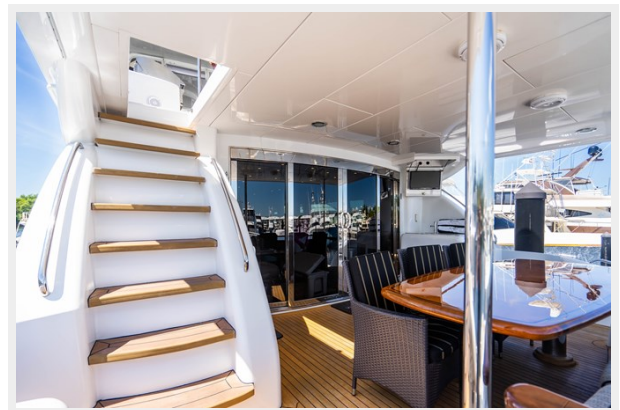
Pursuit tender not included with sale

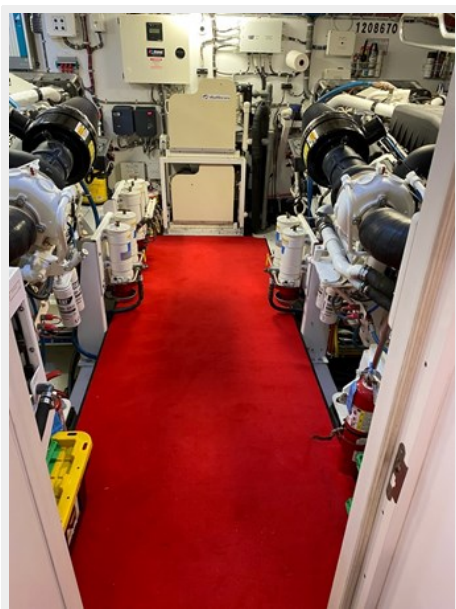
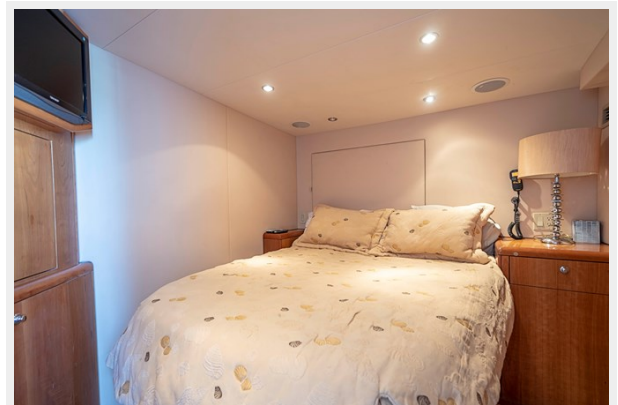












КОНТАКТЫ

Андрей Шестаков (Andrey Shestakov) – ведущий яхтенный брокер отдела продаж яхт и судов компании Shestakov Yacht Sales Inc. Официальный представитель Shestakov Yacht Sales Inc. для русскоговорящих клиентов в центральном офисе компании в Майами/Форт Лодердейл/Флорида/США.

Контактная информация

Email: **andrey@shestakovyachtsales.com**

Web: shestakovyachtsales.com

Телефоны

Краснодарский край: **+7(918)465-66-44**

США, Майами, Флорида: **+1(954)274-4435**

Время работы

Понедельник – Суббота: **9:00 - 21:00**
EDT

Воскресенье: **Закрето**

Адрес



Harbour Towne Marina, 850 NE 3rd St,
STE 213, Dania, FL 33004